



CUSH-A-CLAMPS

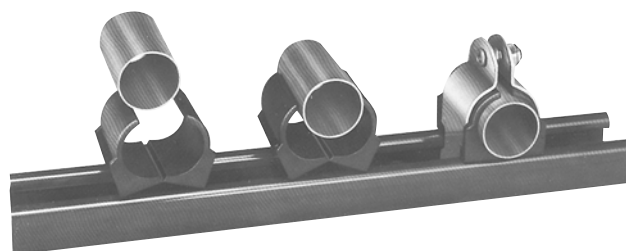
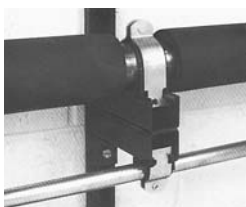
CUSH-A-CLAMP® channel mounted clamping systems are ideal for multiple line runs, while absorbing shock and vibration, reducing unwanted noise and preventing galvanic corrosion.

The Clamp features a unique shoulder stud which is securely fastened to one clamp half. This “Controlled-Squeeze™” design eliminates over-tightening and rotation while a nylon-insert nut assures a positive lock. Clamps are available in steel (with electrochromate finish) and stainless steel. Fits any standard 1⁵/₈” wide channel.

The Cushion is manufactured from a thermoplastic elastomer, it’s built tough to withstand the effects of most oils, chemicals and industrial cleaning compounds, in temperatures from -50°F to 275°F. A patented “Living Hinge” allows the cushion to be spread apart for quick, easy installation, interlock edges and channel locator legs insure that the cushion remains in place.

Wide Size Ranges are available in tube sizes from 1/4” to 6 1/8”, pipe sizes from 1/4” to 6”. Special sizes available, consult factory.

Installation - one man, one tool time savings. Retrofits can be added without disassembling your present system.



A patented “Living Hinge” allows the cushion to be spread apart for quick, easy installation on sizes from 1/4” through 1 5/8”

ORDERING INFORMATION

Ordering CUSH-A-CLAMP® assemblies is fast and easy. Refer to the installation chart, select your specific application, then order the appropriate assembly part number. All pipe series and tube series above 1 3/8” are furnished without the controlled-squeeze shoulder bolt. These sizes feature a threaded stud securely fastened to one clamp half. CUSH-A-CLAMP® assemblies are available individually packaged in sizes up to and including 2 1/8”, upon request.

*Tube O.D. is Cushion I.D. All parts are marked for easy identification and packaged for small lot or bulk use.

Part Numbers are “coded” to designate Tube or Pipe series, cushion size and clamp size.

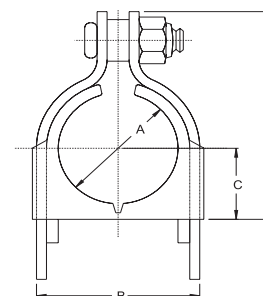
Example:

Tube Series

- 004 (Cushion Size 1/4”)
- T (Tubing Assembly)
- 008 (Clamp Size 1/2”)

Pipe Series

- 009 (Cushion Size 1/4”)
- N (Pipe Assembly)
- 012 (Clamp Size 3/4”)



Design load deflection data available on request

For stainless steel, substitute “NS” for “T” or “N”

Assembly Part Number	Tube Series		Pipe Series		Dimensions			
	*Copper and Steel Tubing	Copper Water Pipe (nom.)	Assembly Part Number	Nominal Pipe Size	A	B	C	D
004T008	1/4"	-	-	-	.25	.62	.27	.98
006T010	3/8"	1/4"	-	-	.37	.82	.33	1.13
008T012	1/2"	3/8"	-	-	.50	.94	.40	1.34
-	-	-	009N012	1/4"	.54	.98	.43	1.34
010T014	5/8"	1/2"	-	-	.62	1.06	.46	1.54
-	-	-	011N014	3/8"	.67	1.13	.49	1.54
012T016	3/4"	5/8"	-	-	.75	1.20	.52	1.68
-	-	-	014N018	1/2"	.84	1.29	.58	1.82
014T018	7/8"	3/4"	-	-	.87	1.31	.58	1.82
016T020	1"	-	-	-	1.00	1.44	.65	1.95
-	-	-	017N022	3/4"	1.05	1.57	.70	2.08
018T022	1 1/8"	1"	-	-	1.12	1.57	.70	2.08
020T024	1 1/4"	-	-	-	1.25	1.70	.77	2.21
-	-	-	021N026	1"	1.31	1.76	.81	2.34
022T026	1 3/8"	1 1/4"	-	-	1.37	1.82	.83	2.34
024N028	1 1/2"	-	-	-	1.50	1.95	.90	2.47
026N030	1 5/8"	1 1/2"	-	-	1.62	2.07	.96	2.60
-	-	-	027N032	1 1/4"	1.66	2.17	.99	2.73
028N032	1 3/4"	-	-	-	1.75	2.20	1.02	2.73
030N034	1 7/8"	-	-	-	1.87	2.32	1.09	2.86

Assembly Part Number	Tube Series		Pipe Series		Dimensions			
	*Copper and Steel Tubing	Copper Water Pipe (nom.)	Assembly Part Number	Nominal Pipe Size	A	B	C	D
-	-	-	030N034	1 1/2"	1.90	2.35	1.09	2.86
032N036	2"	-	-	-	2.00	2.45	1.15	3.04
034N040	2 1/8"	2"	-	-	2.12	2.57	1.27	3.23
038N044	2 3/8"	-	038N044	2"	2.37	2.82	1.41	3.67
040N046	2 1/2"	-	-	-	2.50	2.94	1.46	3.79
042N048	2 5/8"	2 1/2"	-	-	2.62	3.07	1.53	3.92
046N052	2 7/8"	-	046N052	2 1/2"	2.87	3.32	1.66	4.17
050N054	3"	-	-	-	3.00	3.57	1.78	4.42
050N056	3 1/8"	3"	-	-	3.12	3.57	1.78	4.42
053N060	3 5/16"	-	-	-	3.31	3.96	1.90	4.75
056N062	3 1/2"	-	056N062	3"	3.50	3.95	1.97	4.79
058N064	3 5/8"	3 1/2"	-	-	3.62	4.20	2.03	4.11
064N072	4"	-	064N072	3 1/2"	4.00	4.45	2.28	5.42
066N074	4 1/8"	4"	-	-	4.12	4.57	2.34	5.54
069N076	4 5/16"	-	-	-	4.34	4.96	2.40	5.84
072N080	4 1/2"	-	072N080	4"	4.50	4.95	2.53	5.92
082N090	5 1/8"	5"	-	-	5.12	5.57	2.84	6.54
-	-	-	089N096	5"	5.56	6.01	3.06	6.92
098N106	6 1/8"	6	-	-	6.12	6.57	3.34	7.54
-	-	-	106N114	6"	6.62	7.07	3.59	8.23



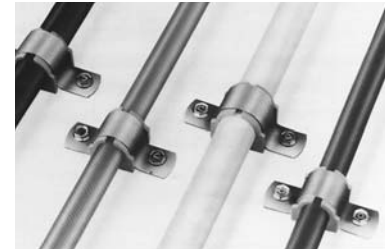
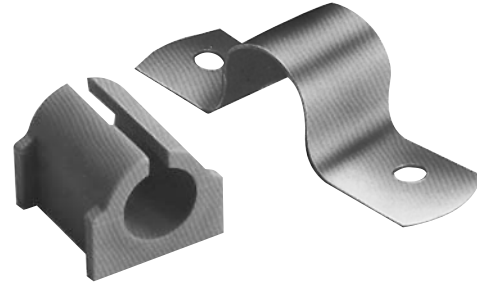
CUSH-A-CLAMPS

Omega Series™

The Omega Series™ clamp assembly retains, guides, protects and uniformly spaces line runs. Attached with two standard fasteners to any flat surface, the Omega Series™ clamp eliminates the use of special channels, providing a savings in both space and cost. They go up fast, lines are rigid and look neat.

The Clamp — Available in steel (with Electrochromate finish) and stainless steel

The Cushion — Manufactured from a thermoplastic elastomer, it's built tough to withstand the effects of most oils, chemical and industrial cleaning compounds, in temperatures from -50°F to 275°F. Interlock edge insures that the cushion remains in place.

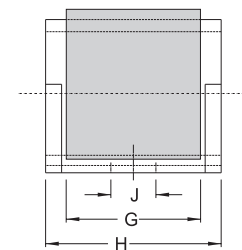
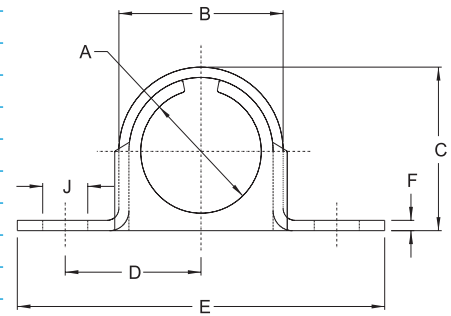


ORDERING INFORMATION

Assembly Part Number	Copper and Steel Tubing O.D.	Copper Water Pipe (nom.)	Nominal Pipe Size	Dimensions								
				A	B	C	D	E	F	G	H	J
004M007	1/4"	—	—	.25	.53	.48	.60	1.81	.06	.62	.78	.20
006M008	3/8"	1/4"	—	.37	.62	.62	.65	1.90	.06	.62	.81	.20
008M011	1/2"	3/8"	1/4"	.50	.82	.75	.80	2.20	.06	.75	.98	.26
010M013	5/8"	1/2"	3/8"	.62	.94	.87	.86	2.32	.06	.75	.98	.26
012M015	3/4"	5/8"	—	.75	1.03	1.01	.90	2.41	.06	.75	.98	.26
014M017	7/8"	3/4"	1/2"	.87	1.18	1.03	.98	2.56	.06	.75	.98	.26
016M019	1"	—	—	1.00	1.31	1.25	1.04	2.68	.06	.75	.98	.26
018M020	—	—	3/4"	1.05	1.31	1.25	1.04	2.68	.06	.75	.98	.26
018M021	1 1/8"	1"	—	1.12	1.44	1.33	1.11	2.82	.06	.75	.98	.26
020M024	1 1/4"	—	—	1.25	1.65	1.47	1.20	3.00	.08	1.25	1.56	.26
021M026	—	—	1"	1.31	1.76	1.71	1.26	3.12	.08	1.25	1.56	.26
022M026	1 3/8"	1 1/4"	—	1.37	1.76	1.71	1.26	3.12	.08	1.25	1.56	.26
024M028	1 1/2"	—	—	1.50	1.93	1.88	1.42	3.65	.08	1.25	1.56	.26
026M030	1 5/8"	1 1/2"	—	1.62	2.07	2.00	1.48	3.77	.08	1.25	1.56	.26
027M032	—	—	1 1/4"	1.66	2.21	2.12	1.55	3.90	.10	1.25	1.56	.33
028M032	1 3/4"	—	—	1.75	2.21	2.12	1.55	3.90	.10	1.25	1.56	.33
030M034	1 7/8"	—	1 1/2"	1.87	2.33	2.25	1.61	4.02	.10	1.25	1.56	.33
032M036	2"	—	—	2.00	2.46	2.38	1.67	4.15	.10	1.25	1.56	.33
034M040	2 1/8"	—	—	2.12	2.71	2.62	1.80	4.40	.10	1.25	1.56	.33
038M044	2 3/8"	—	2"	2.37	2.96	2.88	1.94	4.71	.10	1.25	1.56	.33
082M090	5 1/8"	—	—	5.12	5.83	6.75	3.41	7.64	.10	1.25	1.56	.40

To order Omega Series™ assemblies, select your specific application from the chart below and order the appropriate part number.

When ordering stainless steel, substitute "MS" for "M" in the part number



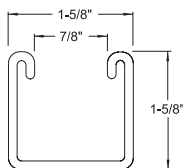
Note: Fasteners not included

Channels

Standard lengths 10'0" (Special lengths available for a small cutting charge)

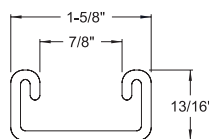
Z-1000

Material: Low-gauge carbon steel
Finish: Green painted
Weight: 190 lbs/C ft



Z-3300

Material: Low-gauge carbon steel
Finish: Green painted
Weight: 135 lbs/C ft



Z-1000 Stainless

Material: Stainless Steel
Weight: 82 lbs/C ft

