



# NON-J.I.C. RESERVOIRS

## Horizontal Welded Top

### ORDERING INFORMATION

VESCOR Horizontal Non-JIC Reservoirs can be ordered with mounting for In-Tank Water Cooler (TMWC001-\*)  
Please use Part Number when ordering.

|                          |   |   |
|--------------------------|---|---|
| 5140                     | — | TMWC  |
| RESERVOIR<br>PART NUMBER |   | OMIT - Standard Reservoir<br>TMWC - Cutout for in-tank cooler |

Note: In-tank cooler purchased as separate item  
Sight Gauge and Filler Breather shipped loose inside reservoir



### Each Horizontal Non-J.I.C. Reservoirs includes:

- 1 (1) Oil Level & Temp. Gauge
2. (1) Filler Breather (hole not provided)
- \* 3. (2) 6" Cleanout Covers or In-Tank Oil Cooler Mounting
4. Baffle with cutout for circulation
5. (1) 3/4" NPT Drain
6. Steel construction with welded top
7. Exterior of reservoir prime painted
8. Interior of reservoir coated with rust preventive oil

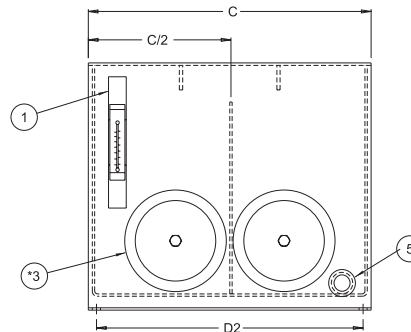
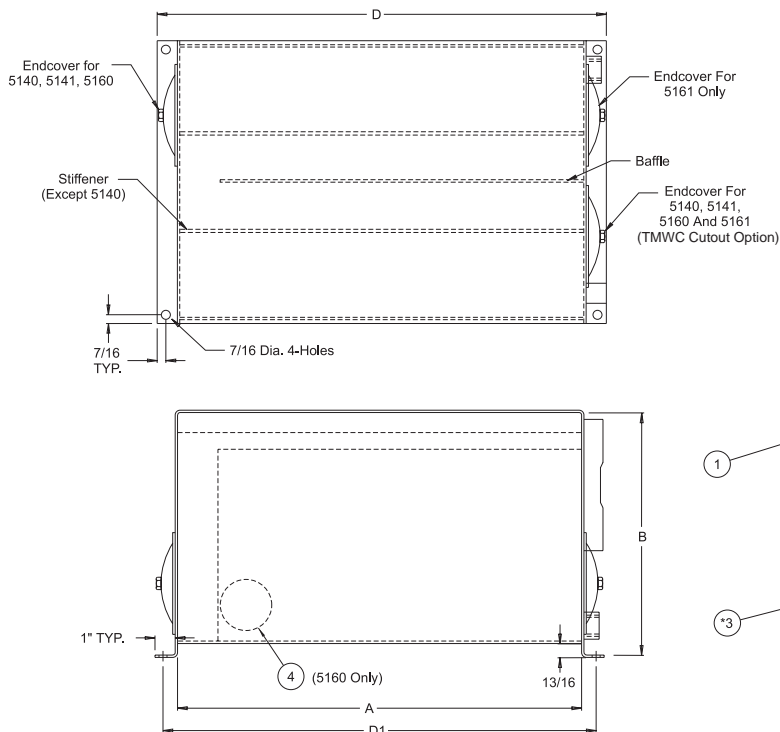
### Sight Gauge

10 to 40 gallon - 5" sight gauge (ALG5T)

### Filler Breather

Bayonet Style - 40 micron (5201)

\* NOTE: In-Tank Oil Cooler is installed in place of (1) 6" cleanout cover

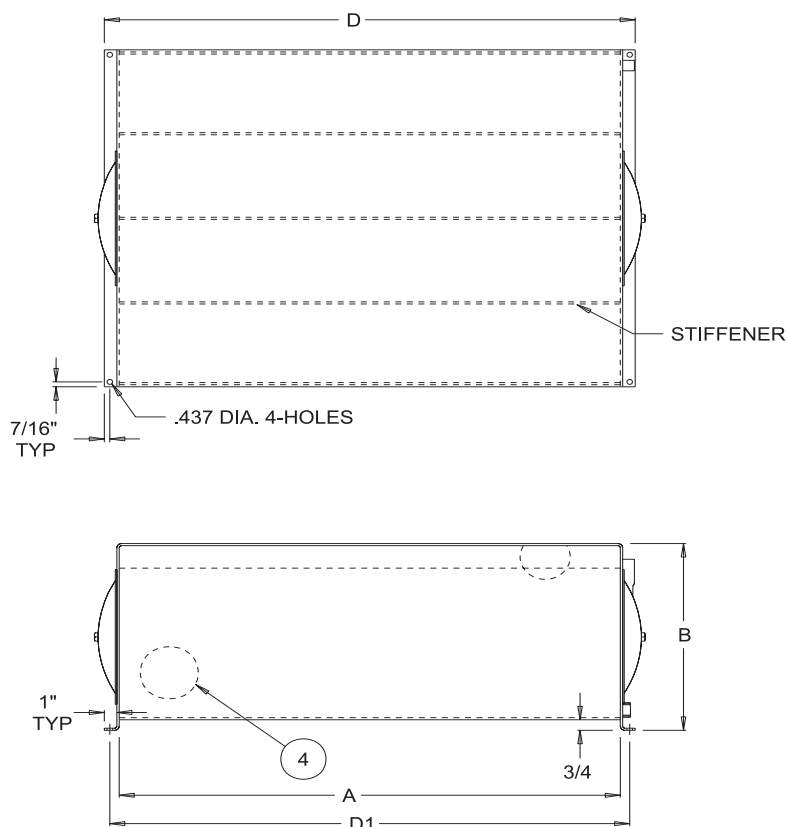


| Capacity Gallons | Vescor Part Number | Tank Dimensions (inches) |     |     |         |                                       |                      | Shipping Weight |
|------------------|--------------------|--------------------------|-----|-----|---------|---------------------------------------|----------------------|-----------------|
|                  |                    | A                        | B   | C   | D       | Mounting Centers D <sub>1</sub> ±1/8" | D <sub>2</sub> ±1/8" |                 |
| 10               | 5140               | 20"                      | 12" | 14" | 22 1/4" | 21 3/8"                               | 13 1/8"              | 50#             |
| 20               | 5141               | 24"                      | 14" | 18" | 26 1/4" | 25 3/8"                               | 17 1/8"              | 80#             |
| 30               | 5160               | 36"                      | 14" | 18" | 38 1/4" | 37 3/8"                               | 17 1/8"              | 100#            |
| 40               | 5161               | 36"                      | 14" | 24" | 38 1/4" | 37 3/8"                               | 23 1/8"              | 130#            |



# NON-J.I.C. RESERVOIRS

## Horizontal Welded Top



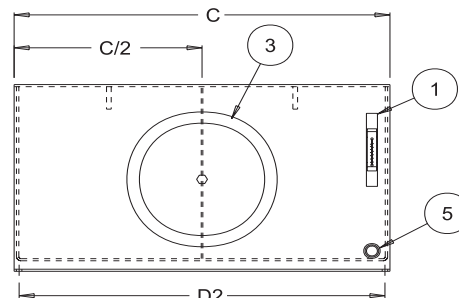
### Each Horizontal Non-J.I.C. Reservoir includes:

1. (1) Oil Level & Temp. Gauge
2. (1) Filler Breather (hole not provided)
3. (2) 12" Cleanout Covers
4. Baffle with cutouts for circulation
5. (1) 3/4" NPT Drain
6. Steel construction with welded top
7. Exterior of reservoir prime painted
8. Interior of reservoir coated with rust preventive oil

### Sight Gauge

60 to 100 gallon - 5" sight gauge (ALG5T)

*Sight Gauge and Filler Breather shipped loose inside reservoir*



| Capacity Gallons | Vescor Part Number | Tank Dimensions (inches) |                                  |     |                                  |                                  |                                  | Shipping Weight |
|------------------|--------------------|--------------------------|----------------------------------|-----|----------------------------------|----------------------------------|----------------------------------|-----------------|
|                  |                    | A                        | B                                | C   | D                                | Mounting Centers D1 ±1/8"        | D2 ±1/8"                         |                 |
| 60               | 5162               | 40"                      | 16 <sup>5</sup> / <sub>8</sub> " | 30" | 42 <sup>3</sup> / <sub>8</sub> " | 41 <sup>1</sup> / <sub>2</sub> " | 29 <sup>1</sup> / <sub>8</sub> " | 270#            |
| 80               | 5163               | 48"                      | 16 <sup>5</sup> / <sub>8</sub> " | 30" | 50 <sup>3</sup> / <sub>8</sub> " | 49 <sup>1</sup> / <sub>2</sub> " | 29 <sup>1</sup> / <sub>8</sub> " | 320#            |
| 100              | 5164               | 52"                      | 16 <sup>5</sup> / <sub>8</sub> " | 36" | 54 <sup>3</sup> / <sub>8</sub> " | 53 <sup>1</sup> / <sub>2</sub> " | 35 <sup>1</sup> / <sub>8</sub> " | 410#            |
| 100              | 5165               | 48"                      | 19"                              | 30" | 50 <sup>3</sup> / <sub>8</sub> " | 49 <sup>1</sup> / <sub>2</sub> " | 29 <sup>1</sup> / <sub>8</sub> " | 410#            |