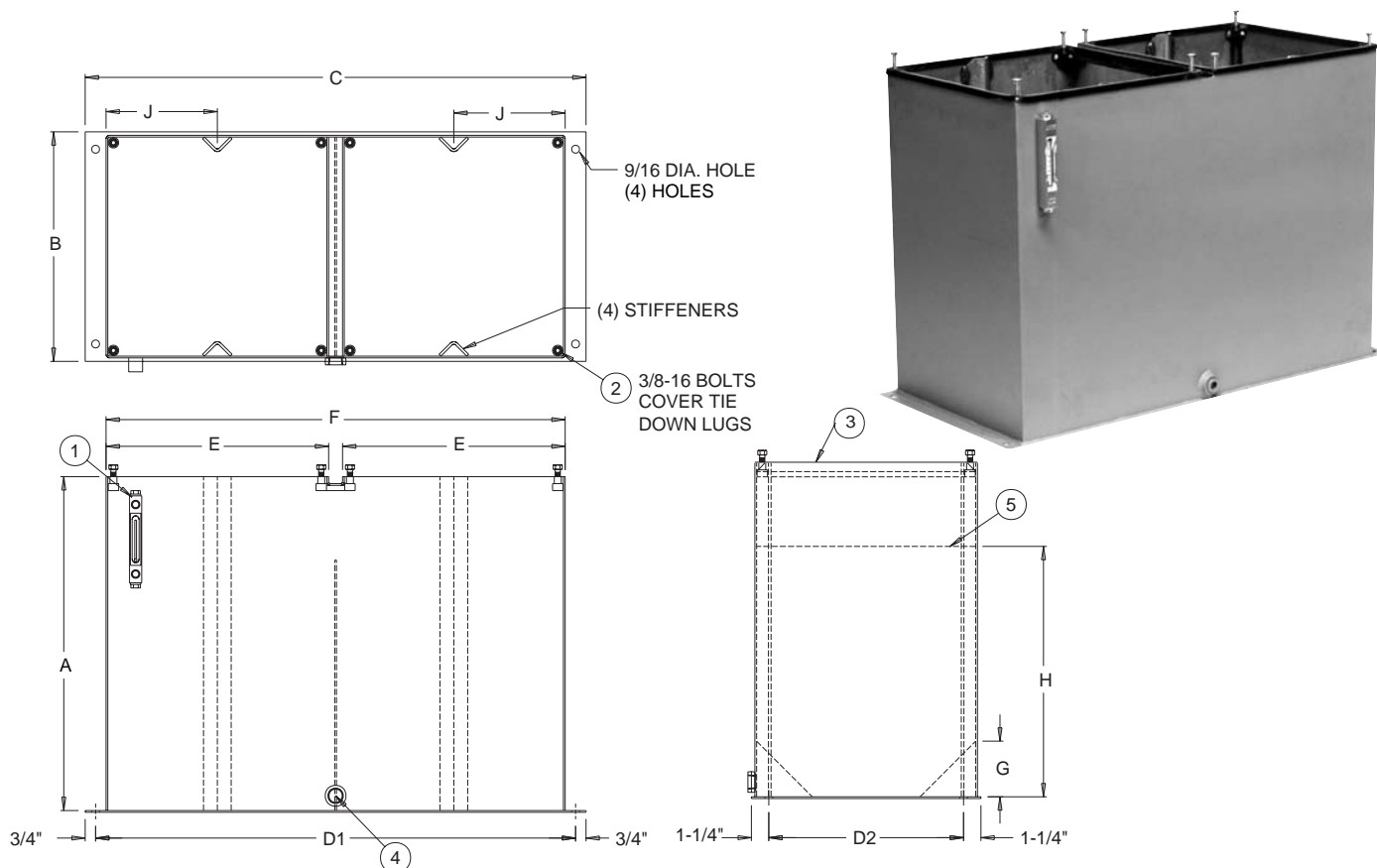




# DUAL VERTICAL RESERVOIRS



## Each Dual Vertical Non-JIC Reservoir Includes

- (1) Oil Level and Temperature Gauge
- (8) Cover Mounting Bolts
- (2) Channel Gaskets for Cover Plate Seals
- (1) 3/4" NPT Drain.
- (1) Baffle with Cutouts for Circulation
- Steel Construction with Customer Choice of Top
- Exterior of Reservoir Prime Painted
- Interior of Reservoir Coated with Rust Preventive oil.

Note: Cover Plates ordered as separate items. See page 22 and 24

## Dual Vertical Reservoirs - Series 2

| Capacity<br>Gallons | Vescor<br>Part<br>Number | Tank Dimensions (inches) |         |     |                                |         |     |     |    |     |    | Shipping<br>Weight |
|---------------------|--------------------------|--------------------------|---------|-----|--------------------------------|---------|-----|-----|----|-----|----|--------------------|
|                     |                          | A                        | B       | C   | Mounting<br>Centers<br>D1±1/8" | D2±1/8" | E   | F   | G  | H   | J  |                    |
| 40                  | 215188                   | 24"                      | 16 1/2" | 36" | 34 1/2"                        | 14"     | 16" | 33" | 4" | 18" | 8" | 128#               |
| 60                  | 215189                   | 36"                      | 16 1/2" | 36" | 34 1/2"                        | 14"     | 16" | 33" | 4" | 18" | 8" | 179#               |

All Series 2 Vertical Reservoirs use standard Vescor Series 2 cover plates. See page 22 for cover plate availability.  
(2) cover plates required per reservoir.

## Dual Vertical Reservoirs - Series 3

| Capacity<br>Gallons | Vescor<br>Part<br>Number | Tank Dimensions (inches) |     |     |                                |         |         |     |    |         |        | Shipping<br>Weight |
|---------------------|--------------------------|--------------------------|-----|-----|--------------------------------|---------|---------|-----|----|---------|--------|--------------------|
|                     |                          | A                        | B   | C   | Mounting<br>Centers<br>D1±1/8" | D2±1/8" | E       | F   | G  | H       | J      |                    |
| 50                  | 215195                   | 22 1/2"                  | 18" | 39" | 37 1/2"                        | 15 1/2" | 17 1/2" | 36" | 5" | 19"     | 8 3/4" | 135#               |
| 60                  | 215196                   | 26 1/2"                  | 18" | 39" | 37 1/2"                        | 15 1/2" | 17 1/2" | 36" | 5" | 22 1/2" | 8 3/4" | 154#               |

All Series 3 Vertical Reservoirs use standard Vescor Series 3 cover plates. See page 24 for cover plate availability.  
(2) cover plates required per reservoir.