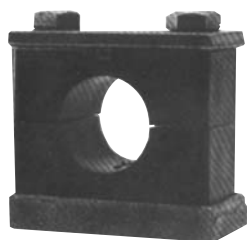


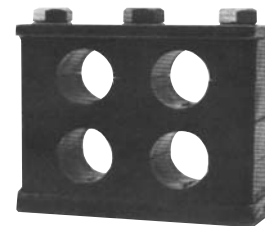


# CUSHION CLAMPS



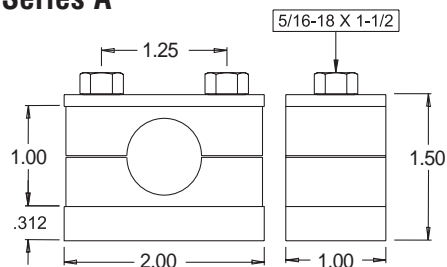
## VESCOR® CUSHION CLAMP SYSTEMS are a product of the U.S.A.!

With polypropylene cushions and quality steel hardware. Cushions are precisely molded to conform without distortion during installation and the solid cushion design resists crushing while absorbing shock and suppressing vibration and noise. Cushions are temperature rated up to 110°F and remain stable in applications subjected to light acids, solvents, fuels, minerals oils, alcohol, paints and salt water. Vescor Heavy Duty Cushion Clamp systems are available from ½" thru 2½" O.D. In Single, Stack and Twin Custom Systems to 4½" O.D.



## Single and Single Stack Cushion

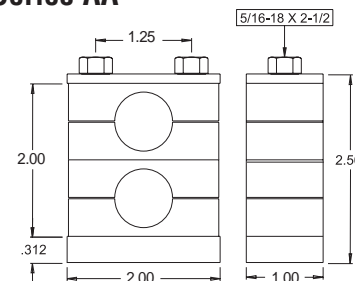
### Series A



Tube O.D.	Part No.	Pipe Size O.D.	Part No.	Hose O.D.	Part No.
.250	25T	⅛" (.405)	12P	.500	50H
.375	37T	¼" (.540)	25P	.562	56H
.500	50T	⅜" (.675)	37P	.625	62H
.625	62T	—	—	.687	68H
.750	75T	—	—	.750	75H

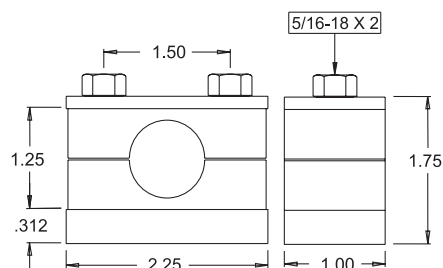
## .125 thru .750

### Series AA



## Single and Single Stack Cushion

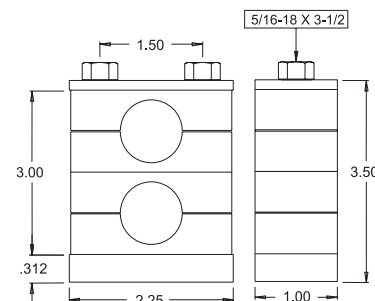
### Series B



Tube O.D.	Part No.	Pipe Size O.D.	Part No.	Hose O.D.	Part No.
.375	37T	½" (.840)	50P	.750	75H
.500	50T	¾" (1.050)	75P	.812	81H
.625	62T	—	—	.875	87H
.750	75T	—	—	.937	93H
.875	87T	—	—	1.00	100H
1.00	100T	—	—	—	—

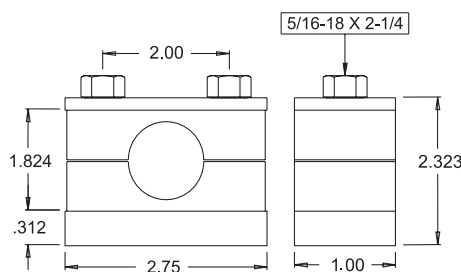
## .375 thru 1.00

### Series BB



## Single and Single Stack Cushion

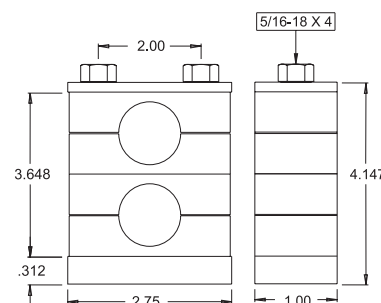
### Series N



Tube O.D.	Part No.	Pipe Size O.D.	Part No.	Hose O.D.	Part No.
.750	75T	½" (.840)	50P	1.063	106H
.875	87T	¾" (1.050)	75P	1.125	112H
1.00	100T	1" (1.315)	100P	1.187	118H
1.25	125T	—	—	1.250	125H
1.50	150T	—	—	1.312	131H
—	—	—	—	1.375	137H
—	—	—	—	1.437	143H
—	—	—	—	1.500	150H

## .500 thru 1.50

### Series NN



## HOW TO ORDER

Example: single cushion A - 25T - H  
single stack NN - 112H - 150T - H

Series — Part Number — H = All hardware  
C = Cushion set only

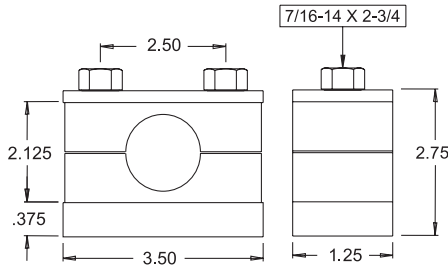


# CUSHION CLAMPS

## Single and Single Stack Cushion

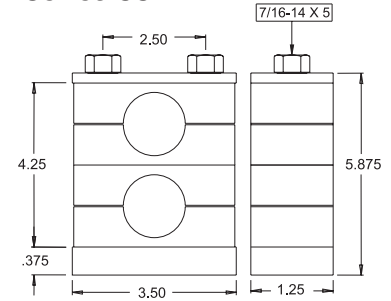
.50 thru 1.50

### Series C



Tube O.D.	Part No.	Pipe Size O.D.	Part No.	Hose O.D.	Part No.
.750	75T	½" (.840)	50P	1.063	106H
.875	87T	¾" (1.050)	75P	1.125	112H
1.00	100T	1" (1.315)	100P	1.187	118H
1.25	125T	–	–	1.250	125H
1.50	150T	–	–	1.312	131H
–	–	–	–	1.375	137H
–	–	–	–	1.437	143H
–	–	–	–	1.500	150H

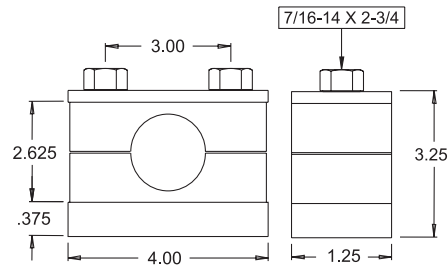
### Series CC



## Single and Single Stack Cushion

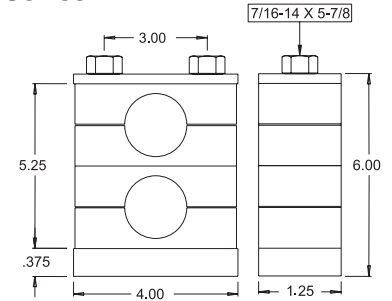
.75 thru 2.00

### Series D



Tube O.D.	Part No.	Pipe Size O.D.	Part No.	Hose O.D.	Part No.
1.00	100T	¾" (1.050)	75P	1.563	156H
1.25	125T	1" (1.315)	100P	1.625	162H
1.50	150T	1¼" (1.660)	125P	1.687	168H
1.75	175T	1½" (1.900)	150P	1.750	175H
2.00	200T	–	–	1.812	181H
–	–	–	–	1.875	187H
–	–	–	–	1.937	193H
–	–	–	–	2.000	200H

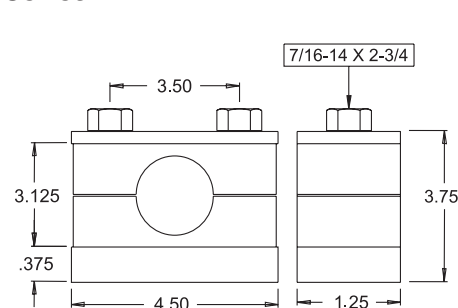
### Series DD



## Single and Single Stack Cushion

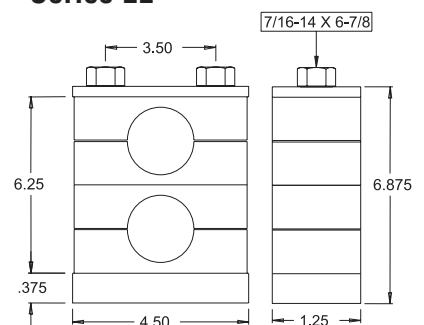
.75 thru 2.50

### Series E



Tube O.D.	Part No.	Pipe Size O.D.	Part No.	Hose O.D.	Part No.
1.50	150T	¾" (1.050)	75P	2.063	206H
1.75	175T	1" (1.315)	100P	2.125	212H
2.00	200T	1¼" (1.660)	125P	2.187	218H
2.25	225T	1½" (1.900)	150P	2.250	225H
2.50	250T	2" (2.375)	200P	2.312	231H
–	–	2½" (2.875)	250P	2.375	237H
–	–	–	–	2.437	243H
–	–	–	–	2.500	250H

### Series EE



### HOW TO ORDER

Example: single cushion D - 125T - H  
single stack EE - 175T - 200T - H

Series Part Number H = All hardware  
C = Cushion set only

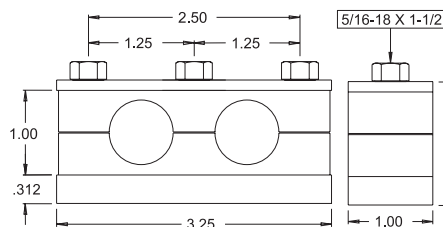


# CUSHION CLAMPS

## Twin and Twin Stack Cushion

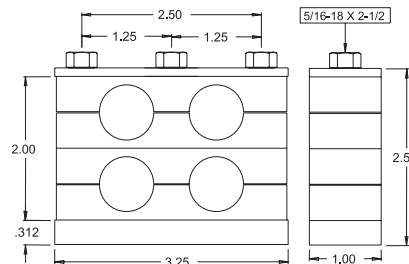
**.50 thru 1.50**

### Series F



Tube O.D.	Part No.	Pipe Size O.D.	Part No.	Hose O.D.	Part No.
.250-.250	<b>2525T</b>	1/8x1/8 (.405)	<b>1212P</b>	.500-.500	<b>5050H</b>
.375-.375	<b>3737T</b>	1/4x1/4 (.540)	<b>2525P</b>	.563-.563	<b>5656H</b>
.375-.500	<b>3750T</b>	3/8x3/8 (.675)	<b>3737P</b>	.625-.625	<b>6262H</b>
.375-.625	<b>3762T</b>	—	—	.687-.687	<b>6868H</b>
.375-.750	<b>3775T</b>	—	—	.750-.750	<b>7575H</b>
.500-.500	<b>5050T</b>	—	—	—	—
.500-.625	<b>5062T</b>	—	—	—	—
.500-.750	<b>5075T</b>	—	—	—	—
.625-.625	<b>6262T</b>	—	—	—	—
.625-.750	<b>6275T</b>	—	—	—	—
.750-.750	<b>7575T</b>	—	—	—	—

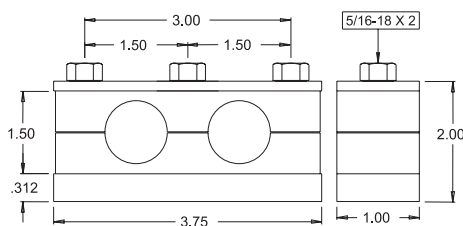
### Series FF



## Twin and Twin Stack Cushion

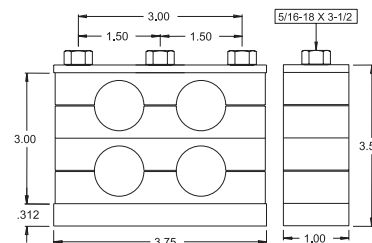
**.375 thru 1.00**

### Series G



Tube O.D.	Part No.	Pipe Size O.D.	Part No.	Hose O.D.	Part No.
.375-1.00	<b>3710T</b>	1/2x1/2 (.840)	<b>5050P</b>	.750-.750	<b>7575H</b>
.500-1.00	<b>5010T</b>	3/4x3/4 (1.050)	<b>7575P</b>	.812-.812	<b>8181H</b>
.625-1.00	<b>6210T</b>	—	—	.875-.875	<b>8787H</b>
.750-.750	<b>7575T</b>	—	—	.937-.937	<b>9393H</b>
.750-1.00	<b>7510T</b>	—	—	1.00-1.00	<b>1010H</b>
1.00-1.00	<b>1010T</b>	—	—	—	—

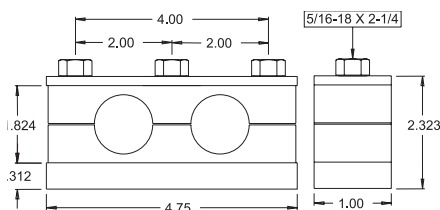
### Series GG



## Twin and Twin Stack Cushion

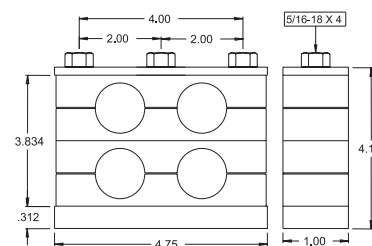
**.500 thru 1.50**

### Series L



Tube O.D.	Part No.	Pipe Size O.D.	Part No.	Hose O.D.	Part No.
.750-.750	<b>7575T</b>	1/2x1/2 (.840)	<b>5050P</b>	1.063-1.063	<b>106106H</b>
.875-.875	<b>8787T</b>	3/4x3/4 (1.050)	<b>7575P</b>	1.125-1.125	<b>112112H</b>
.875-1.00	<b>8710T</b>	1x1 (1.315)	<b>1010P</b>	1.187-1.187	<b>118118H</b>
.875-1.25	<b>8712T</b>	—	—	1.250-1.250	<b>125125H</b>
.875-1.50	<b>8715T</b>	—	—	1.312-1.312	<b>131131H</b>
1.00-1.00	<b>1010T</b>	—	—	1.375-1.375	<b>137137H</b>
1.00-1.25	<b>1012T</b>	—	—	1.437-1.437	<b>143143H</b>
1.00-1.50	<b>1015T</b>	—	—	1.500-1.500	<b>150150H</b>
1.25-1.25	<b>1212T</b>	—	—	—	—
1.25-1.50	<b>1215T</b>	—	—	—	—
1.50-1.50	<b>1515T</b>	—	—	—	—

### Series LL



### HOW TO ORDER

Example: twin cushion L - 7575T - 7575P - H      Series      Part Number      H = All hardware  
 twin stack      FF - 5050T - 2525P - H      C = Cushion set only

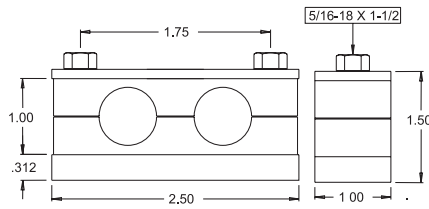


# CUSHION CLAMPS

## Mini Twin and Mini Twin Stack Cushion

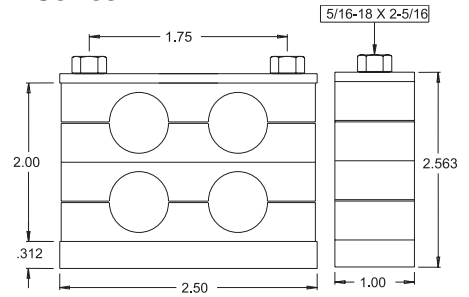
.125 thru 5.00

### Series M



Tube O.D.	Part No.	Pipe Size O.D.	Part No.
.250-.250	<b>2525T</b>	1/8x1/8 (.405)	<b>1212P</b>
.375-.375	<b>3737T</b>	1/4x1/4 (.540)	<b>2525P</b>
.500-.500	<b>5050T</b>	—	—

### Series MM



### HOW TO ORDER

Example: mini twin cushion M - 5050T - H  
mini twin stack MM - 25250T - 3737T - H

Series

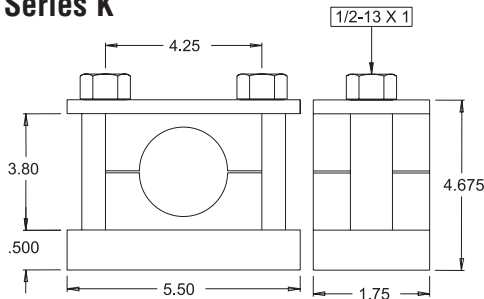
Part Number

H = All hardware  
C = Cushion set only

## Single Cushion

2.50 thru 3.00

### Series K



Tube O.D.	Part No.	Pipe Size O.D.	Part No.
2.50	<b>250T</b>	2 1/2 (2.875)	<b>250P</b>
3.00	<b>300T</b>	—	—

HOW TO ORDER Example: K - 250P - H

K

Series K

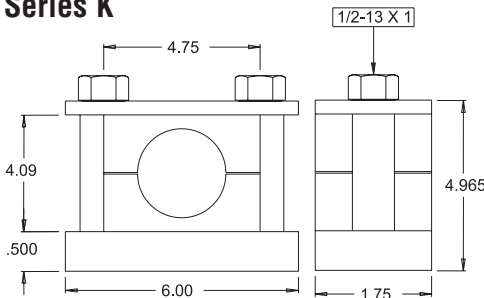
Part Number

H = All hardware  
C = Cushion set only

## Single Cushion

3.00 thru 3.50

### Series K



Tube O.D.	Part No.	Pipe Size O.D.	Part No.
—	—	3" (3.50)	<b>300P</b>
3.50	<b>350T</b>	—	—

HOW TO ORDER Example: K - 300P - H

K

Series K

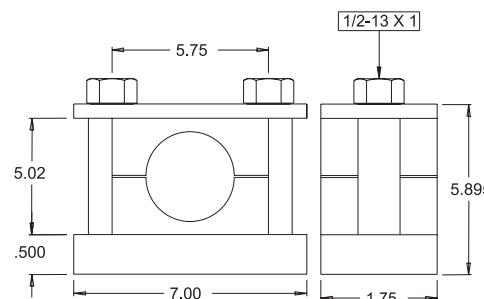
Part Number

H = All hardware  
C = Cushion set only

## Single Cushion

4.00 thru 4.50

### Series K



Tube O.D.	Part No.	Pipe Size O.D.	Part No.
4.00	<b>400T</b>	4" (4.50)	<b>400P</b>
4.50	<b>450T</b>	—	—

HOW TO ORDER Example: K - 400P - H

K

Series K

Part Number

H = All hardware  
C = Cushion set only