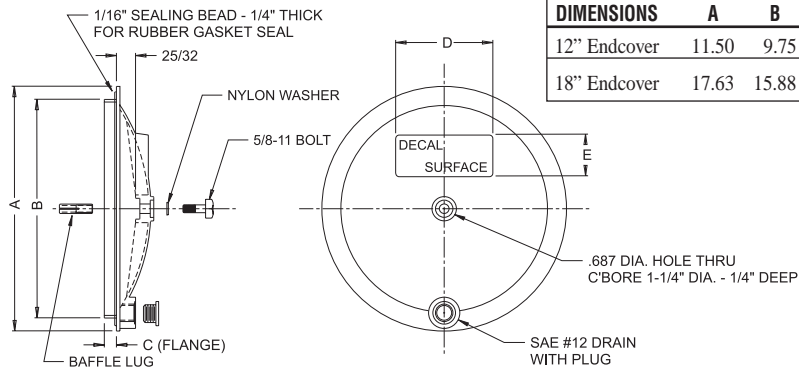




# END COVERS

## Aluminum Endcovers



| DIMENSIONS   | A     | B     | C   | D | E | WT   |
|--------------|-------|-------|-----|---|---|------|
| 12" Endcover | 11.50 | 9.75  | .75 | 3 | 2 | 2.75 |
| 18" Endcover | 17.63 | 15.88 | .75 | 7 | 3 | 5.75 |

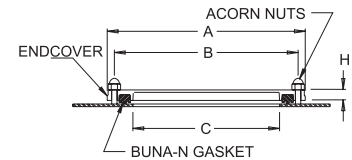
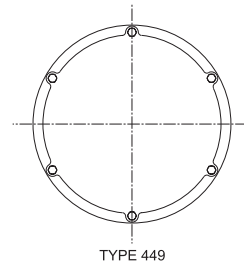
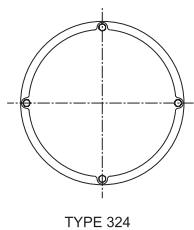
Recommended Torque: 15ft/lb

| End Cover Size | *Endcover Kit No. for All Parts | Baffle Lug Part No. | Aluminum Endcover Gasket (Buna-N) Part No. | +Aluminum Endcover Part No. | Nylon Washer Part No. | 5/8-11 Bolt Part No. | Drain Plug Part No. |
|----------------|---------------------------------|---------------------|--|-----------------------------|-----------------------|----------------------|---------------------|
| 12"            | 136899                          | 5084                | 835484                                     | 835487                      | 5083                  | 5082                 | 12HP50N             |
| 18"            | 136999                          | 5084                | 835485                                     | 835489                      | 5083                  | 5082                 | 12HP50N             |

\*NOTE: Endcover kits includes – (1) aluminum door, (1) buna-n gasket, (1) baffle lug, (1) nylon washer, (1) 5/8-11 bolt, (1) #12 sae drain plug

+NOTE: Aluminum endcover includes – (1) endcover, (1) gasket, (1) drain plug

## DIN Type Endcovers



| Endcover Type | *Endcover Kit No. for All Parts | M10 Acorn Nut Part No. | DIN Type Endcover Gaskets (Buna-N) Part No. | DIN Type Endcover Part No. | A Dia.           | B B.C.           | C Cutout         | H             |
|---------------|---------------------------------|------------------------|---|----------------------------|------------------|------------------|------------------|---------------|
| 324           | 136699                          | 108499                 | V-6701                                      | DIN324                     | 350mm<br>13.78in | 324mm<br>12.75in | 248mm<br>9.76in  | 18mm<br>.70in |
| 449           | 136799                          | 108499                 | V-6702                                      | DIN449                     | 475mm<br>18.70in | 449mm<br>17.68in | 383mm<br>15.08in | 18mm<br>.70in |

\*NOTE: Endcover kit includes – (1) din type door, (1) buna-n gasket, (4) or (6) acorn nuts. Endcover includes (1) din type door and (1) buna-n gasket

## 6" Endcover



### 6" Door

Available as Assembly Only

Part Number 1917

Each assembly includes:

- (1) 3/8" x 1-1/4" long hex head bolt
- (1) Nylon Washer
- Cover
- Buna-N Gasket
- Back Cover with Weld Nut

Access Opening Dia = 4<sup>5</sup>/<sub>8</sub>"

