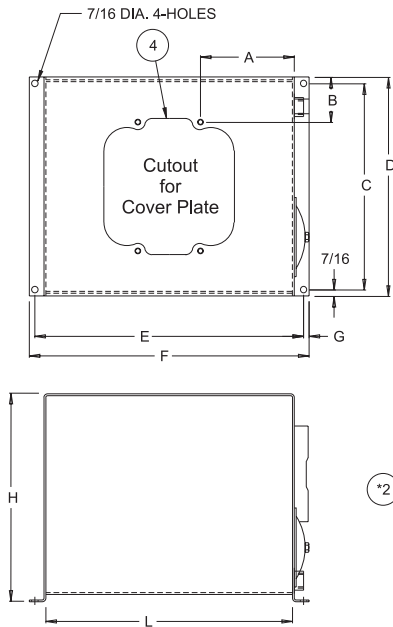




# VARI-PAK RESERVOIRS

## 8, 10 and 14 Gallon Capacity



### Each Vari-Pak Reservoir Includes:

1. (1) Oil Level & Temp. Gauge
- \* 2. 6" Cleanout Cover or In-Tank Oil Cooler mounting \*(NOTE: In-Tank Oil cooler is installed in place of 6" cleanout cover)
3. (1) 3/4" NPT Drain
4. Buna-N Gasket for Top Plate Seal
5. Steel Construction with Customer Choice of Top Plate
6. Exterior of reservoir prime painted
7. Interior of reservoir coated with rust preventive oil

### Sight Gauge

8 to 14 gallon - 5" sight gauge (ALG5T)

**NOTE: Cover Plate ordered as separate item (see below)**

*Sight Gauge shipped loose inside reservoir,  
Filler Breather included with cover plate*

Capacity Gallons	Vescor Part Number	Tank Dimensions (inches)									Shipping Weight
A	B	C	D	E	F	G	H	L			
8	<b>29908</b>	5"	1 <sup>5</sup> / <sub>8</sub> "	11 <sup>1</sup> / <sub>8</sub> "	12"	13 <sup>3</sup> / <sub>8</sub> "	14 <sup>1</sup> / <sub>4</sub> "	7/16"	18 <sup>1</sup> / <sub>8</sub> "	12"	45#
10	<b>29910</b>	6 <sup>3</sup> / <sub>8</sub> "	3 <sup>1</sup> / <sub>16</sub> "	14"	14 <sup>7</sup> / <sub>8</sub> "	18 <sup>1</sup> / <sub>4</sub> "	19"	3/8"	14 <sup>1</sup> / <sub>8</sub> "	16 <sup>3</sup> / <sub>4</sub> "	57#
14	<b>29914</b>	7"	1 <sup>5</sup> / <sub>8</sub> "	11 <sup>1</sup> / <sub>8</sub> "	12"	19 <sup>3</sup> / <sub>8</sub> "	20 <sup>1</sup> / <sub>4</sub> "	7/16"	20 <sup>1</sup> / <sub>8</sub> "	18"	65#

### ORDERING INFORMATION

VESCOR Vari-Pak Reservoirs can be ordered with mounting for In-Tank Water Cooler (TMWC001-\*)  
Please use Part Number when ordering.

\*In-Tank cooler purchased as separate item

[29908] - [TMWC]  
RESERVOIR PART NUMBER OMIT - Standard Reservoir  
TMWC - cutout for in-tank cooler

### COVER PLATES

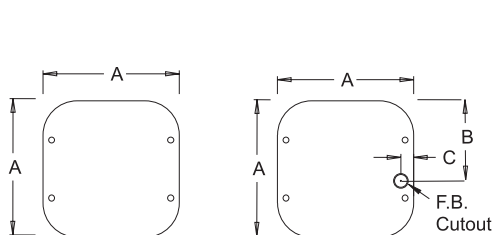
Vescor Vari-Pak Reservoirs allow you to choose the style cover plate for your individual needs.

**Reservoir and Cover Plate must be ordered as separate items.**

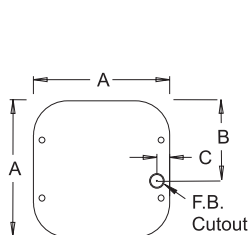
Please use part number when ordering

Cover Part Number	A (SQ)	B	C	D	E	F (ADAPTER CUTOUT)
99908 99909 99910 99911	10 <sup>1</sup> / <sub>8</sub> "	5 <sup>15</sup> / <sub>16</sub> "	1 <sup>3</sup> / <sub>16</sub> "	5 <sup>1</sup> / <sub>16</sub> "	3 <sup>21</sup> / <sub>32</sub> "	cutout for 56/145TC adapter (style 1, 1A, 1B)
99907	10 <sup>1</sup> / <sub>8</sub> "	N/A	N/A	5 <sup>1</sup> / <sub>16</sub> "	5 <sup>1</sup> / <sub>16</sub> "	cutout for 182/256TC adapter only (style 7)

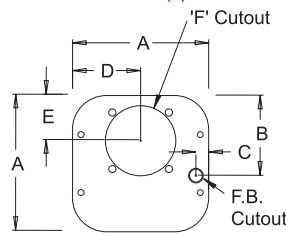
All covers include (1) PMB07-10 Mini Breather



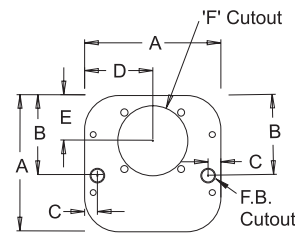
Style A Cover Plate  
Blank Cover  
Part Number 99908



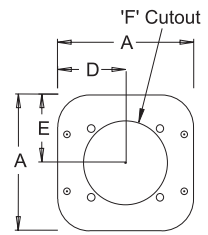
Style B Cover Plate  
with Breather Cutout  
Part Number 99909



Style C Cover Plate  
with Breather Cutout and  
56C/145TC Adapter Cutout  
Part Number 99910



Style D Cover Plate  
with Breather Cutout and  
56C/145TC Adapter Cutout  
1/2" NPT Connection  
Part Number 99911



Style E Cover Plate  
with Breather Cutout and  
182/256TC Adapter Cutout  
Part Number 99907