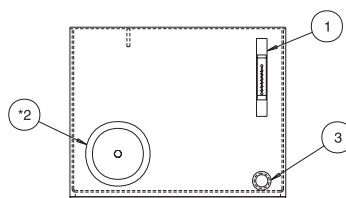
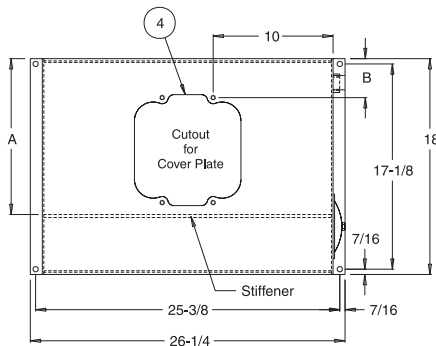




VARI-PAK RESERVOIRS

20 and 25 Gallon Capacity



Each Vari-Pak Reservoir Includes:

1. (1) Oil Level & Temp. Gauge
- * 2. 6" Cleanout Cover or In-Tank Oil Cooler mounting
*(NOTE: In-Tank Oil cooler is installed in place of 6" cleanout cover)
3. (1) 3/4" NPT Drain
4. Buna-N Gasket for Top Plate Seal
5. Steel Construction with Customer Choice of Top Plate
6. Exterior of reservoir prime painted
7. Interior of reservoir coated with rust preventive oil

Sight Gauge

20 to 25 gallon - 5" sight gauge (ALG5T)

NOTE: Cover Plate ordered as separate item (see below)

Sight Gauge shipped loose inside reservoir, Filler Breather included with cover plate

ORDERING INFORMATION

VESCOR Vari-Pak Reservoirs can be ordered with mounting for In-Tank Water Cooler (TMWC001-*)
Please use Part Number when ordering.

*In-Tank cooler purchased as separate item

[29920] - [TMWC]
RESERVOIR OMIT - Standard Reservoir
PART NUMBER TMWC - cutout for in-tank cooler

COVER PLATES

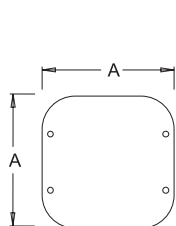
Vescor Vari-Pak Reservoirs allow you to choose the style cover plate for your individual needs.

Reservoir and Cover Plate must be ordered as separate items.

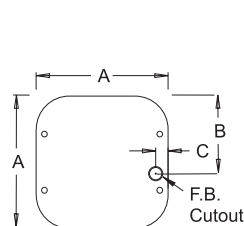
Please use part number when ordering

| COVER PART NUMBER | A (SQ) | B | C | D | E | F (ADAPTER CUTOUT) |
|----------------------------------|---------|---------|---------|---------|----------|---|
| 99908 99909 99910 99911 | 10 1/8" | 5 5/16" | 1 3/16" | 5 1/16" | 3 21/32" | cutout for 56/145TC adapter (style 1, 1A, 1B) |
| 99907 | | | | | | |
| | | | | | | |
| | | | | | | |

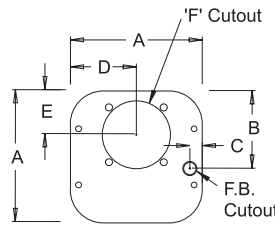
All covers includes (1) PMB07-10 Mini Breather



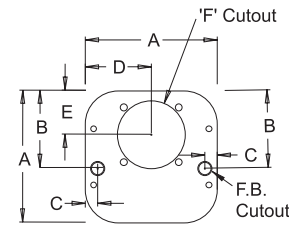
Style A Cover Plate
Blank Cover
Part Number 99908



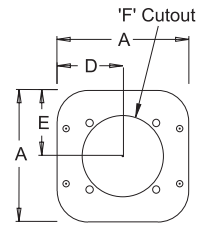
Style B Cover Plate
with Breather Cutout
Part Number 99909



Style C Cover Plate
with Breather Cutout and
56C/145TC Adapter Cutout
Part Number 99910



Style D Cover Plate
with Breather Cutout and
56C/145TC Adapter Cutout
1/2" NPT Connection
Part Number 99911



Style E Cover Plate
with Breather Cutout and
182/256TC Adapter Cutout
Part Number 99907