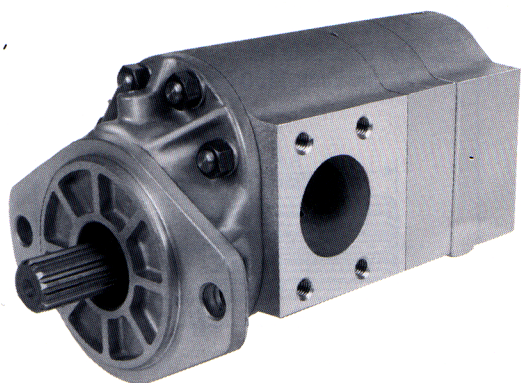


Model TM25



Description Gear Motors
 Flow Range To 134 GPM Per Section (507.2 LTR.)
 Displacements To 15.50 C.I.R. Per Section (254.00 CC's/REV.)
 Maximum Pressure to 2500 PSI (172 BAR)
 Maximum Speed to 2000 RPM
 Rotation Bi-Directional
 Bearings Journal
 Construction Aluminum

Performance Data

MOTOR SECTION MODEL	SIZE	DISPLACEMENT/REVOLUTION (Theoretical)					Torque Per 1000 PSID					Power at Max. RPM & Max.PSID		Maximum Limits				
		US		Cubic		Cubic Imperial	Start		Run			H.P.	KW	Relief Setting		Continuous		
		Gallons	Inches	Liters	Cm's	Gallons	Lb.In.	Nm	Lb.In.	Nm	PSI			BAR	PSI	BAR	RPM	
M25	550	.0479	11.06	.181	181.24	.040	1400	1898	1600	2169	122	91.0	2500	172	1700	117	2000	
M25	660	.0581	13.42	.220	219.91	.048	1760	2386	1960	2657	146	109.0	2500	172	1700	117	2000	
M25	770	.0671	15.50	.254	254.00	.056	1820	2467	2200	1629	828	125.3	2500	172	1700	117	2000	

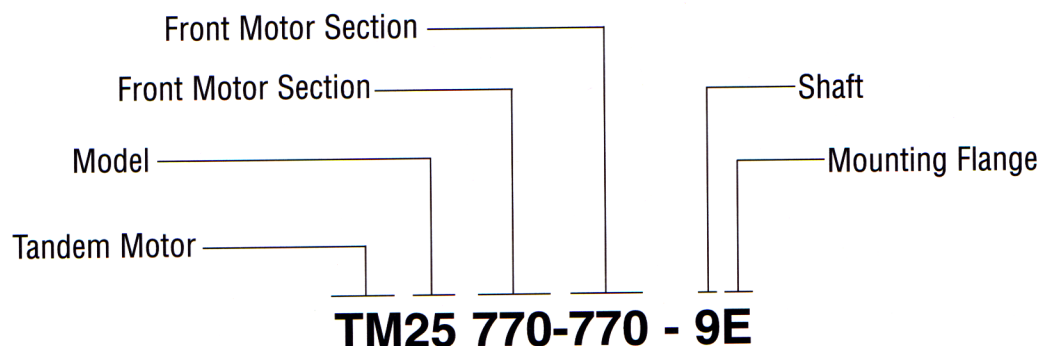
All data based on SAE 10W oil at 150°F.
 *Average values from performance curves.

CAUTION: If return line pressure exceeds 150 PSIG, the external bearing drain must be utilized.

When sizing motors, refer to the performance charts in the back of the catalog to determine the volumetric efficiency and input horsepower requirements.

How To Order

'A' denotes counterclockwise rotation
 'C' denotes clockwise rotation
 When viewed from drive shaft end



Note: Add prefix 'V' to pump model number (TMV25) when ordering pumps with Viton Seals for use with phosphate ester base fluids.

Shafts Available

<p>7 1-1/2" Dia. Straight Shaft Torque Limit 1180 Lbs. Ft. (1600 Nm)</p>	<p>8 1-1/2" Dia. Straight Shaft Torque Limit 1180 Lbs. Ft. (1600 Nm)</p>	<p>9 1-1/2" 14-Tooth Spline Flat Root Side Fit Torque Limit 1180 Lbs. Ft. (1600 Nm)</p> <p>Spline Data Diametral Pitch 12/20 Pressure Angle 30° No. Of Teeth 14</p>
--	--	---

Mounting Flanges Available

<p>E SAE 'C' 4-Bolt</p>	<p>F SAE 'C' 2-Bolt</p>
---------------------------------------	---------------------------------------

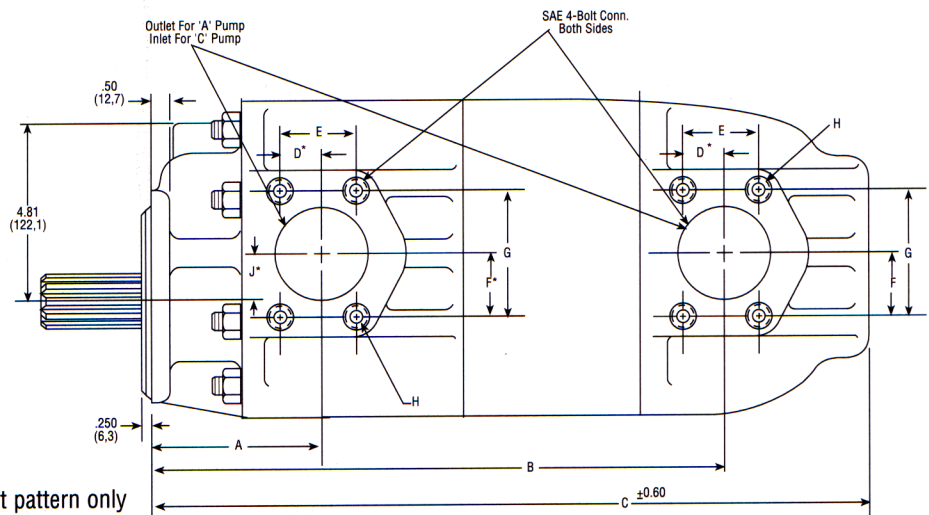
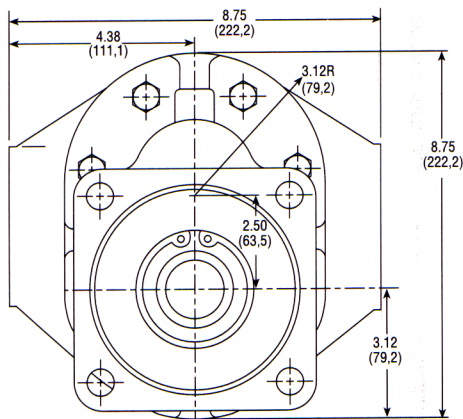
Dimensional Data

Mounting Dimensions

MOTOR SIZE	For 'C' 2-Bolt & 'C' 4-Bolt Flg.			SAE 4-Bolt Conn. Port	
	A	B	C	Inlet	Outlet
TM25550-550	5.06 (128,5)	14.81 (376,1)	18.56 (471,4)	2"	2"
TM25660-550	5.43 (137,9)	15.23 (386,8)	18.98 (482,0)	2"	2"
TM25660-660	5.43 (137,9)	15.48 (393,1)	19.23 (488,4)	2"	2"
TM25770-550	5.81 (147,5)	15.60 (396,2)	19.35 (491,4)	2"	2"
TM25770-660	5.81 (147,5)	15.85 (402,5)	19.60 (497,8)	2"	2"
TM25770-770	5.81 (147,5)	16.10 (408,9)	19.85 (504,1)	2"	2"

SAE 4-Bolt Connector Ports

Size	D	E	F	G	H
2"	.84 (21,3)	1.688 (42,8)	1.53 (38,8)	3.062 (77,7)	1/2-13NC



* These dimensions locate \bar{C} of bolt pattern only



See "General Product & Safety Information" on inside front cover of this catalog

