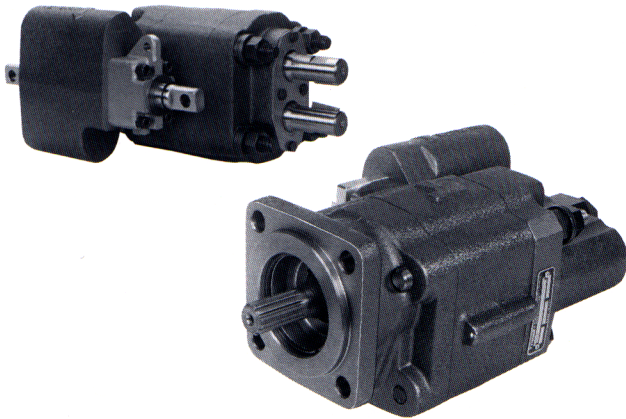


Model T101 & T102



Description Dump Pumps
 Flow Range To 52 GPM
 Displacements To 6.05 C.I.R.
 Maximum Pressure to 2500 PSI
 Maximum Speed to 2000 RPM
 Rotation A, C, or Dual
 Bearings Roller
 Construction Cast Iron

Performance Data

PUMP MODELS	SECTION SIZE	DISPLACEMENT/REVOLUTION (Theoretical)					Horsepower Input US Gallons Displacement(at 2000 PSI)					
		US Gallons	Cubic Inches	Liters	Cubic Centimeters	Imperial Gallons	RPM			RPM		
							1000	1500	2000	1000	1500	2000
T101	20	.022	5.07	.082	83.083	.018	22.0	32.9	44.0	25.5	38.4	51.2
T102	20	.022	5.07	.082	83.083	.018	22.0	32.9	44.0	25.5	38.4	51.2
T101	25	.026	6.05	.099	99.142	.022	26.0	39.3	52.0	30.75	46.13	61.5
T102	25	.026	6.05	.099	99.142	.022	26.0	39.3	52.0	30.75	46.13	61.5

All data based on SAE 10W oil at 150°F. Minimum pump speed at pressure is 800 RPM.
 US Gallons displacements are theoretical. They will vary depending on speed, pressure, and temperature.

CAUTION: "Inlet vacuum" should not exceed 5" Hg at normal operating speed and temperature.
 Operation of pumps in excess of 5" Hg requires factory approval.

When sizing pumps, refer to the performance charts in the back of the catalog to determine the volumetric efficiency and input horsepower requirements.

How To Order

'A' denotes counterclockwise rotation
 'C' denotes clockwise rotation
 When viewed from drive shaft end

T101-DB-20-A-20

T101 _____
 Dual Shaft
 Remote mount only

T102 _____
 Single Shaft
 Direct mount*
 (SAE 4-Bolt B with 7/8" 13T splined shaft. will mount to a Chelsea PTO with a K or Q flange.)

Rotation _____
 A Anti-clockwise
 C Clockwise
 D Dual Shaft
 *(on Direct mounts rotation must be given)

Mounting Bracket _____
 B with bracket (remote only)
 X no bracket

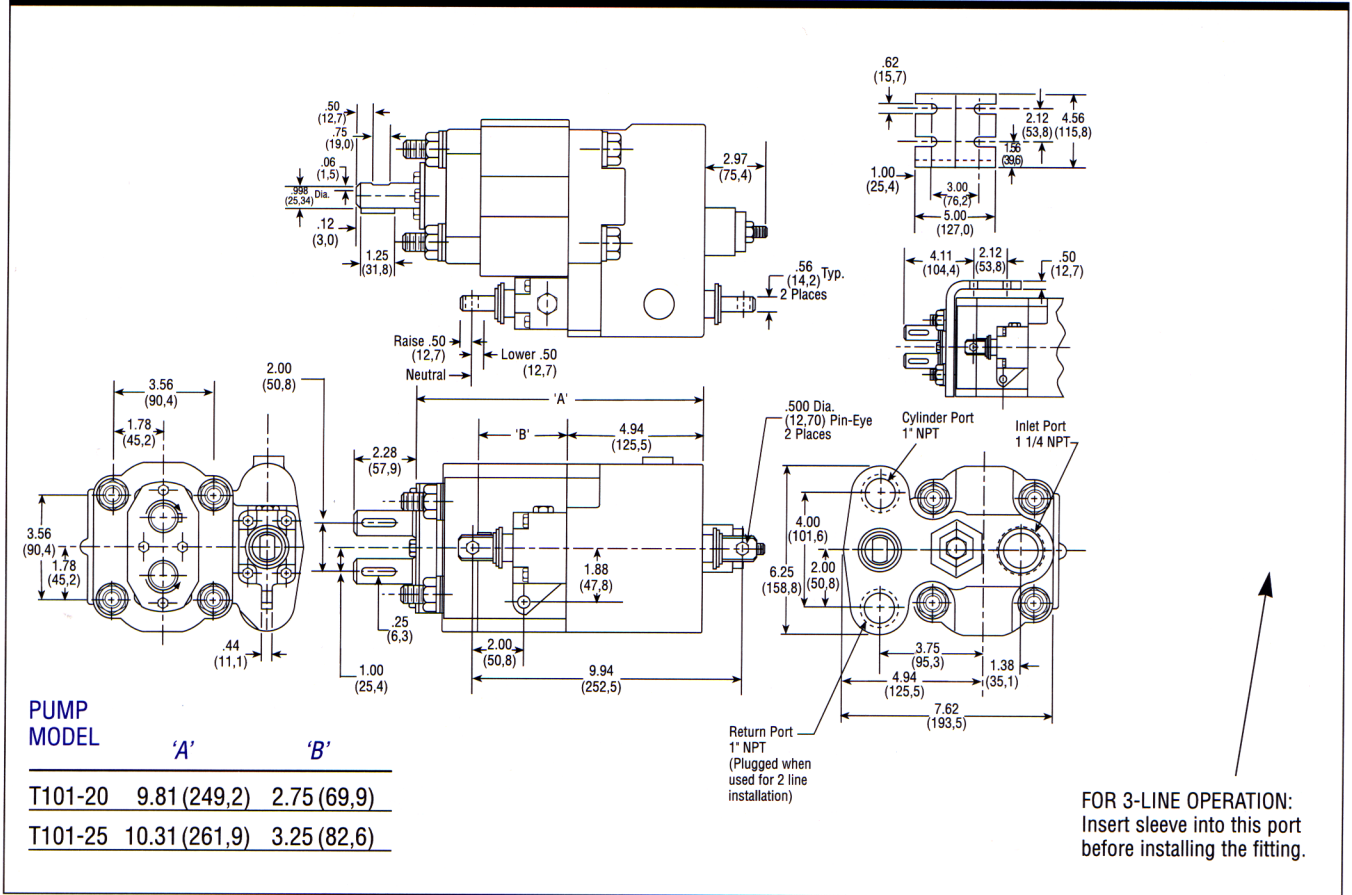
Pressure Setting
 **20-2000 PSI
 25-2500 PSI

Shifter Type
 A (air shift)**
 L (Lever shift)

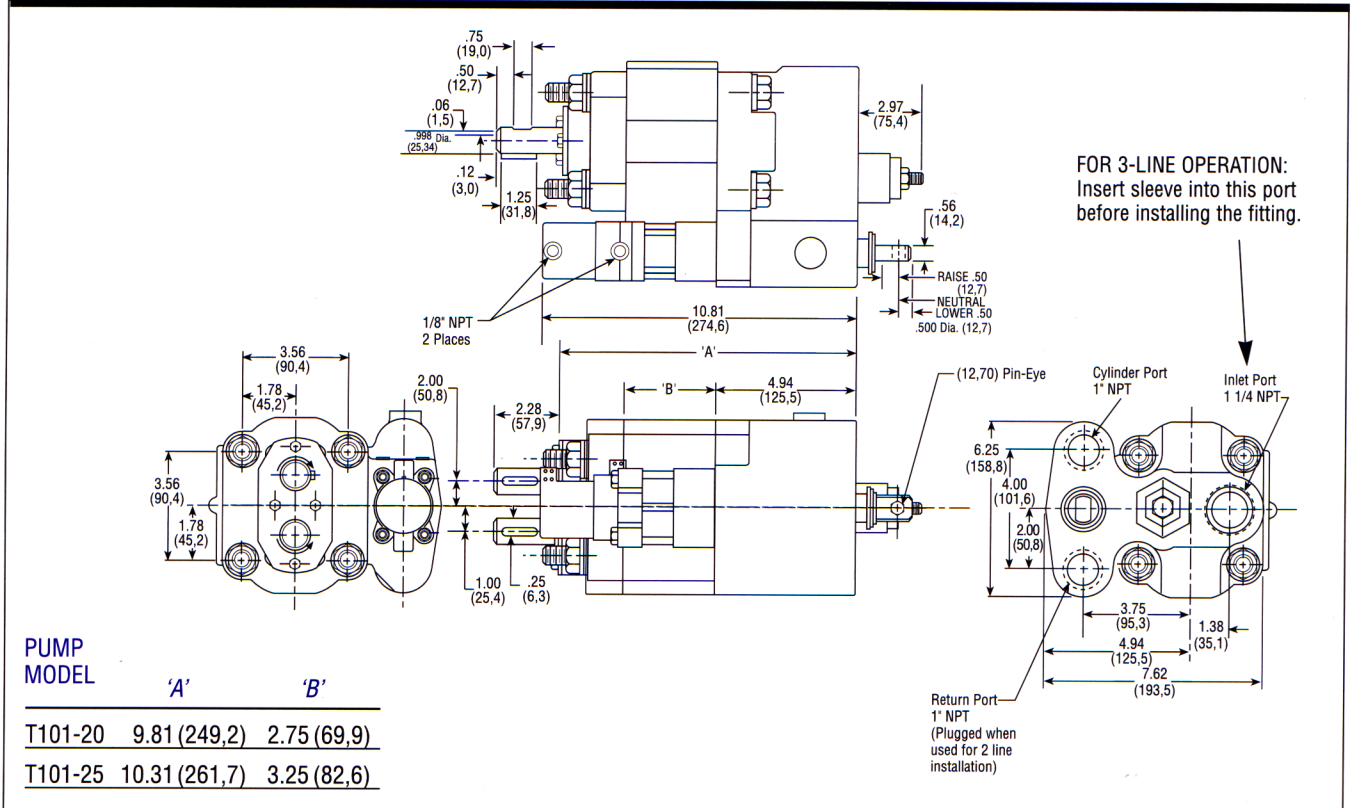
Pump Displacement
 20-2.0" gear
 (25 GPM @ 1200 RPM)
 25-2.5" gear
 (31 GPM @ 1200 RPM)

**Maximum Pressure for Direct Mounts (T102) with 7/8" 13T Shaft is 2000 PSI
 ***80 PSI min.

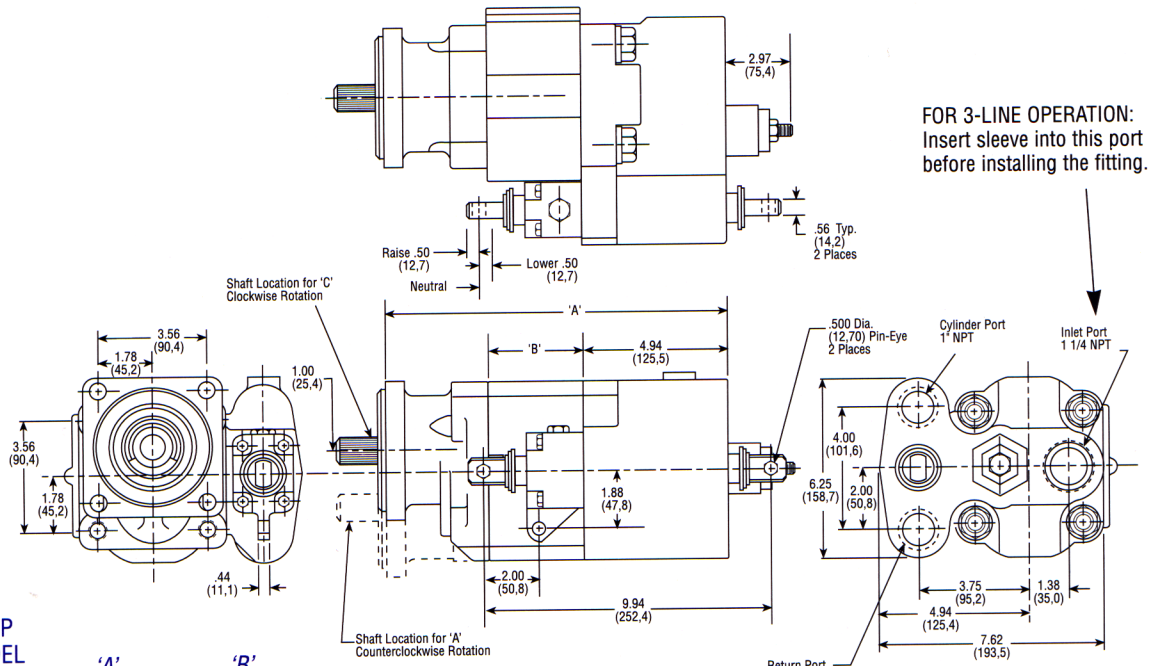
Dimensional Data for T101 Dump Pump with Manual Valve



Dimensional Data for T101 Dump Pump with Air Shift Kit



Dimensional Data for T102 Dump Pump with Manual Valve

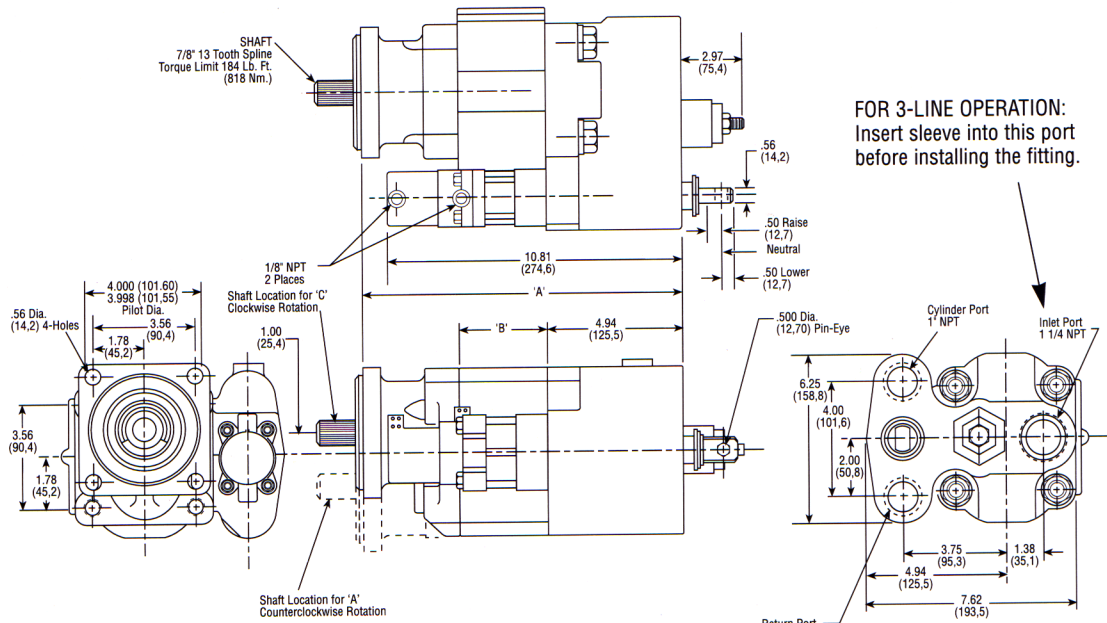


PUMP MODEL

'A' 'B'

T102-20	11.44 (290,6)	2.75 (69,9)
T102-25	11.94 (303,3)	3.25 (82,6)

Dimensional Data for T102 Dump Pump with Air Shift Kit



PUMP MODEL

'A' 'B'

T102-20	11.44 (290,6)	2.75 (69,9)
T102-25	1.94 (303,3)	3.25 (82,6)