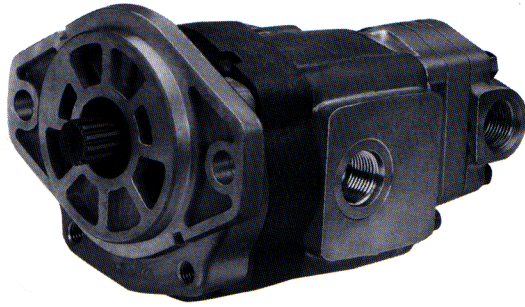


# Model PB16-P12



Description . . . . . Piggy Back Gear Pumps  
 Flow Range . . . . . Front Pump to 42 GPM (158.9 LTR)  
 . . . . . Rear Pump to 11.8 GPM (44.6 LTR)  
 Displacements . Front Pump to 3.90 C.I.R. (63.94 CC's/REV.)  
 . . . . . Rear Pump to .90 C.I.R. (14.84 CC's/REV.)  
 Maximum Pressure to . . . . Front Pump 3000 PSI (207 BAR)  
 . . . . . Rear Pump 2500 PSI (172 BAR)  
 Maximum Speed to . . . . . 3000 RPM  
 Rotation . . . . . A or C  
 Bearings . . . . . Journal  
 Construction Front Pump—Cast Iron Gear Plate  
 with Aluminum Flange and Adapter  
 . . . . . Rear Pump—All Aluminum Construction

## Performance Data

PUMP MODEL	SECTION SIZE	DISPLACEMENT/REVOLUTION (Theoretical)					MAXIMUM PRESSURE		MAXIMUM SPEED
		US Gallons	Cubic Inches	Liters	Cubic Centimeters	Imperial Gallons	PSI	BAR	RPM
PB16	45	.0038	.878	.0144	14.39	.0031	3000	207	3600
PB16	65	.0055	1.270	.0208	20.83	.0045	3000	207	3600
PB16	85	.0072	1.663	.0273	27.27	.0060	3000	207	3400
PB16	100	.0085	1.964	.0321	32.21	.0070	3000	207	3300
PB16	115	.0097	2.241	.0367	36.75	.0080	3000	207	3100
PB16	150	.0127	2.934	.0481	48.11	.0105	3000	207	2800
PB16	180	.0152	3.511	.0575	57.57	.0125	3000 <sup>(1)</sup>	207	2500
PB16	200	.0169	3.904	.0639	64.02	.0140	3000 <sup>(1)</sup>	207	2500
P12	17	.0014	.333	.0055	5.45	.0012	2500	172	3000
P12	22	.0019	.443	.0073	7.26	.0016	2500	172	3000
P12	28	.0024	.554	.0091	9.08	.0020	2500	172	3000
P12	34	.0030	.683	.0112	11.20	.0025	2500	172	3000
P12	40	.0034	.794	.0130	13.02	.0028	2500	172	3000
P12	45	.0039	.905	.0148	14.84	.0032	2500	172	3000

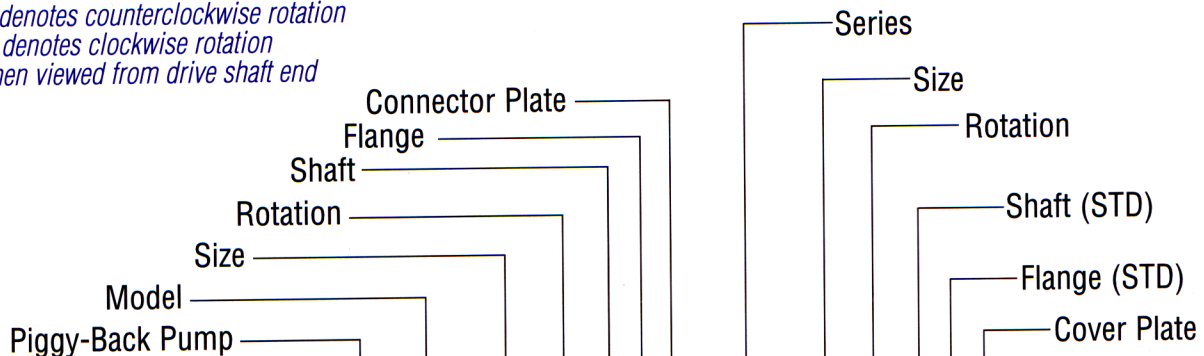
<sup>(1)</sup> Consult Factory For Approval

**CAUTION:** "Inlet vacuum" should not exceed 5" Hg at normal operating speed and temperature. Operation of pumps in excess of 5" Hg requires factory approval.

When sizing pumps, refer to the performance charts in the back of the catalog to determine the volumetric efficiency and input horsepower requirements.

## How To Order

'A' denotes counterclockwise rotation  
 'C' denotes clockwise rotation  
 When viewed from drive shaft end

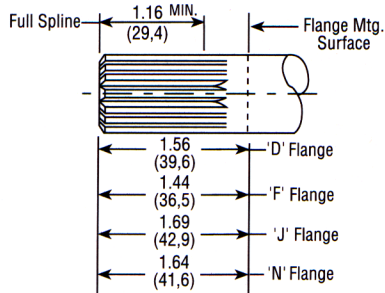


**PB16-150A-5N3-P12-34A-1K5**

# Shafts Available

## 2 7/8" Dia. 13 Tooth Spline Flat Root Side Fit

Torque Limit 184 Lbs. Ft. (249,4 Nm)

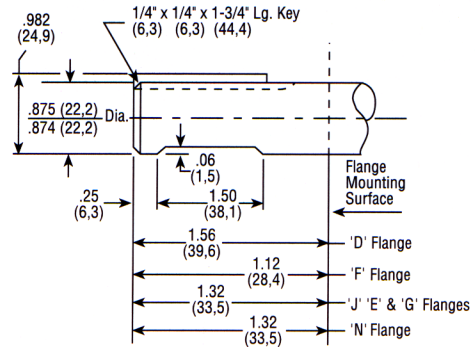


### Spline Data

Diametral Pitch . . . . . 16/32  
Pressure Angle . . . . . 30°  
No. Of Teeth . . . . . 13

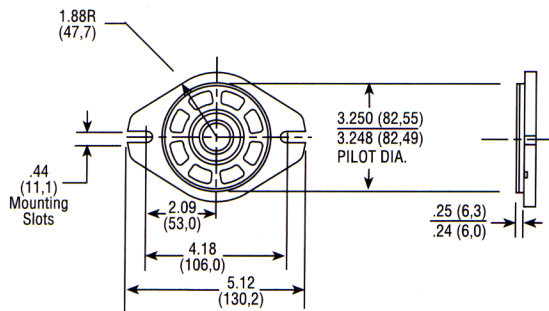
## 5 7/8" Straight Shaft

Torque Limit 184 Lbs.Ft. (249,4 Nm)

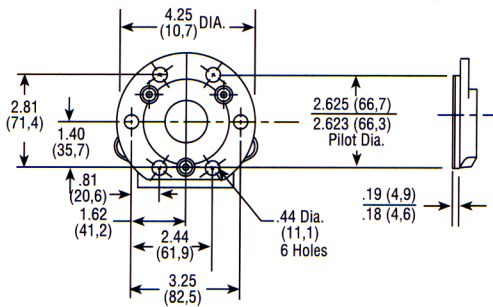


# Mounting Flanges Available

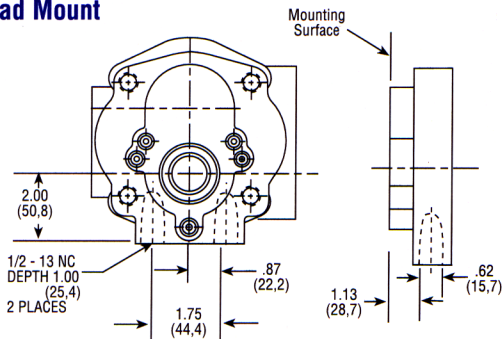
## D SAE 'A' 2-Bolt



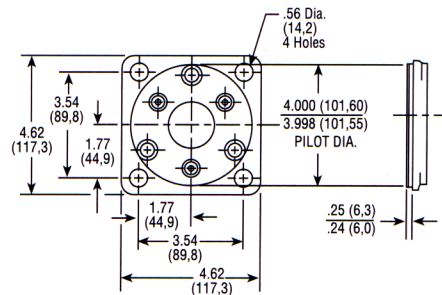
## E 6-Bolt Round



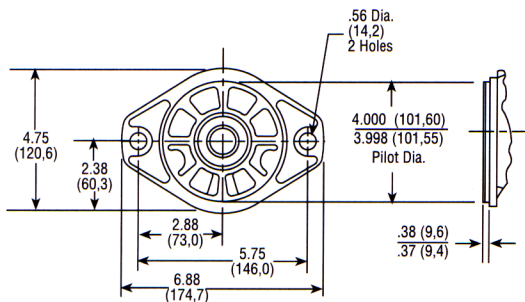
## F Pad Mount



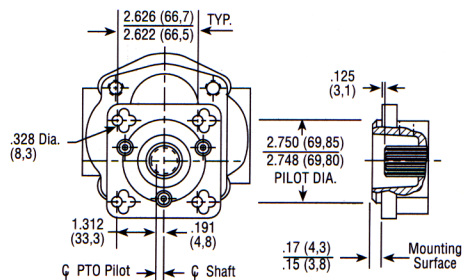
## J SAE 'B' 4-Bolt



## N SAE 'B' 2-Bolt



## S P.T.O. Direct Mount



## Cover Plates Available

<p><b>5</b> <b>P12 Side Ported Straight Thread</b></p> <p>SAE 8 3/4-16UN-2B Discharge</p> <p>SAE 12 1-1/16-12UN-2B Suction</p>	<p><b>6</b> <b>P12 Rear Ported Straight Thread</b></p> <p>Suction SAE 12 1-1/16-12UN-2B</p> <p>Discharge SAE 8 3/4-16UN-2B</p> <p>79 (20,0)   71 (18,0)</p>
--	---

## Discharge Connector Plates Available

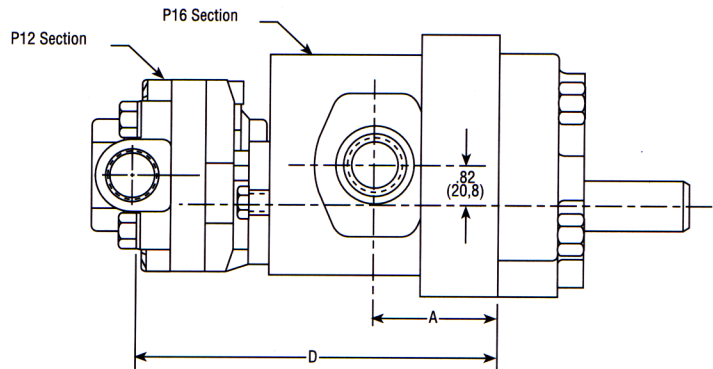
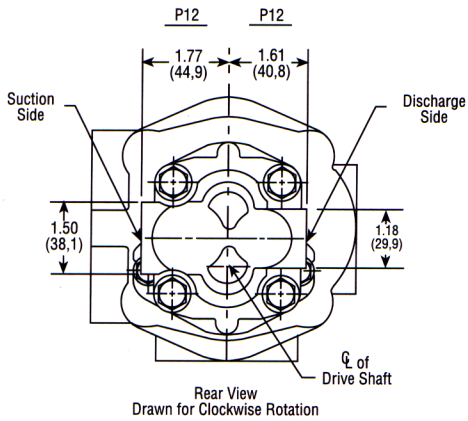
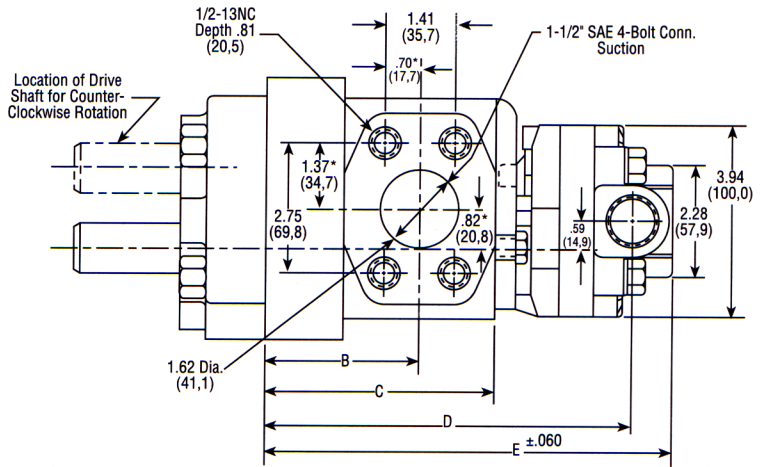
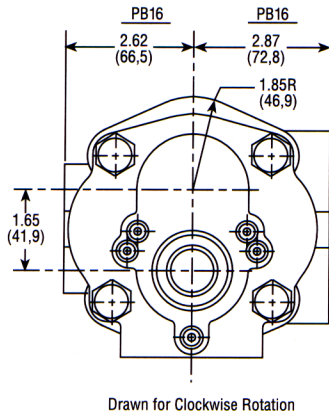
<p><b>3</b> <b>PB16 SAE 4-Bolt</b></p> <p>.88 (22,2) .43 (11,1) 1.88 (47,5) .93 (23,6) .62 Dia. (15,7) 3/8-16NC .88 Depth (22,3)</p> <p>3/4" SAE 4-Bolt Conn. SAE 4-Bolt NPT Connectors Are Available. See Accessory Section</p>	<p><b>4</b> <b>PB16 NPTF – Pipe Thread</b></p> <p><b>8</b> <b>PB16 BSPT – Pipe Thread</b></p> <p>3/4-Pipe Thread</p>	<p><b>5</b> <b>PB16 SAE Straight Thread</b></p> <p>1-1/16-12UN-2B</p>
--	--	---



See "General Product & Safety Information" on inside front cover of this catalog



# Dimensional Data



\*These dimensions locate Q of bolt pattern only.



See "General Product & Safety Information" on inside front cover of this catalog

