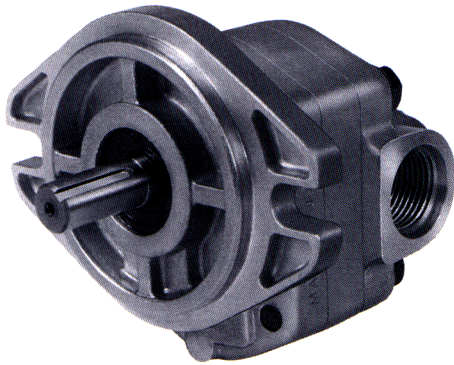


# Model P12



Description . . . . . Gear Pumps  
 Flow Range . . . . . To 12.5 GPM (47.3 LTR)  
 Displacements . . . . . To .905 C.I.R.(14.83 CC's/REV)  
 Maximum Pressure to . . . . . 2500 PSI (172 BAR)  
 Maximum Speed to . . . . . 3000 RPM  
 Rotation . . . . . A or C  
 Bearings . . . . . Journal  
 Construction . . . . . Aluminum Body and Flanges

## Performance Data

PUMP MODEL	SECTION SIZE	DISPLACEMENT/REVOLUTION (Theoretical)					MAXIMUM PRESSURE		MAXIMUM SPEED
		US Gallons	Cubic Inches	Liters	Cubic Centimeters	Imperial Gallons	PSI	BAR	RPM
P12	17	.0014	.333	.0055	5.45	.0012	2500	172	3000
P12	22	.0019	.443	.0073	7.25	.0016	2500	172	3000
P12	28	.0024	.554	.0091	9.08	.0020	2500	172	3000
P12	34	.0030	.683	.0112	11.19	.0025	2500	172	3000
P12	40	.0034	.794	.0130	13.01	.0028	2500	172	3000
P12	45	.0039	.905	.0148	14.83	.0032	2500	172	3000

All data based on SAE 10W oil at 150°F.  
 Available with Viton Seals for use with phosphate ester base fluids.

**CAUTION:** "Inlet vacuum" should not exceed 5" Hg at normal operating speed and temperature. Operation of pumps in excess of 5" Hg requires factory approval.

When sizing pumps, refer to the performance charts in the back of the catalog to determine the volumetric efficiency and input horsepower requirements.

## How To Order

'A' denotes counterclockwise rotation  
 'C' denotes clockwise rotation  
 When viewed from drive shaft end



Note: Add prefix 'V' to pump model number (VP12) when ordering pumps with Viton Seals for use with phosphate ester base fluids.

# Shafts Available

<p><b>1 5/8" Dia. 9 Tooth Spline</b>  <b>"Flat Root Side Fit"</b>          Torque Limit 52 Lbs. Ft. (70,5 Nm)</p> <p>Fig. Mtg. Surface</p> <p>Full Spine .83 (21,0)</p> <p>1.31 (33,2) 2-Bolt 'A'</p> <p>1.50 (38,1) 2-Bolt 'AA'</p> <p><b>Spline Data</b>          Diametral Pitch ..... 16/32          Pressure Angle ..... 30°          No. Of Teeth ..... 9</p>	<p><b>4 9/16" Straight Shaft</b>          Torque Limit 46 Lbs. Ft. (62,4 Nm)</p> <p>1/8" X 1/8" X 13/16" Lg. Key          (3,0) x (3,0) x (20,5)</p> <p>.618 (15,6) Dia.</p> <p>.562 (14,3)</p> <p>.561 (14,2)</p> <p>.591 Dia. (15,0)</p> <p>1.18 (29,9)</p> <p>1.31 (33,2) 2-Bolt 'A'</p> <p>1.50 (38,1) 2-Bolt 'AA'</p> <p>Fig. Mtg. Surface</p>
---	---

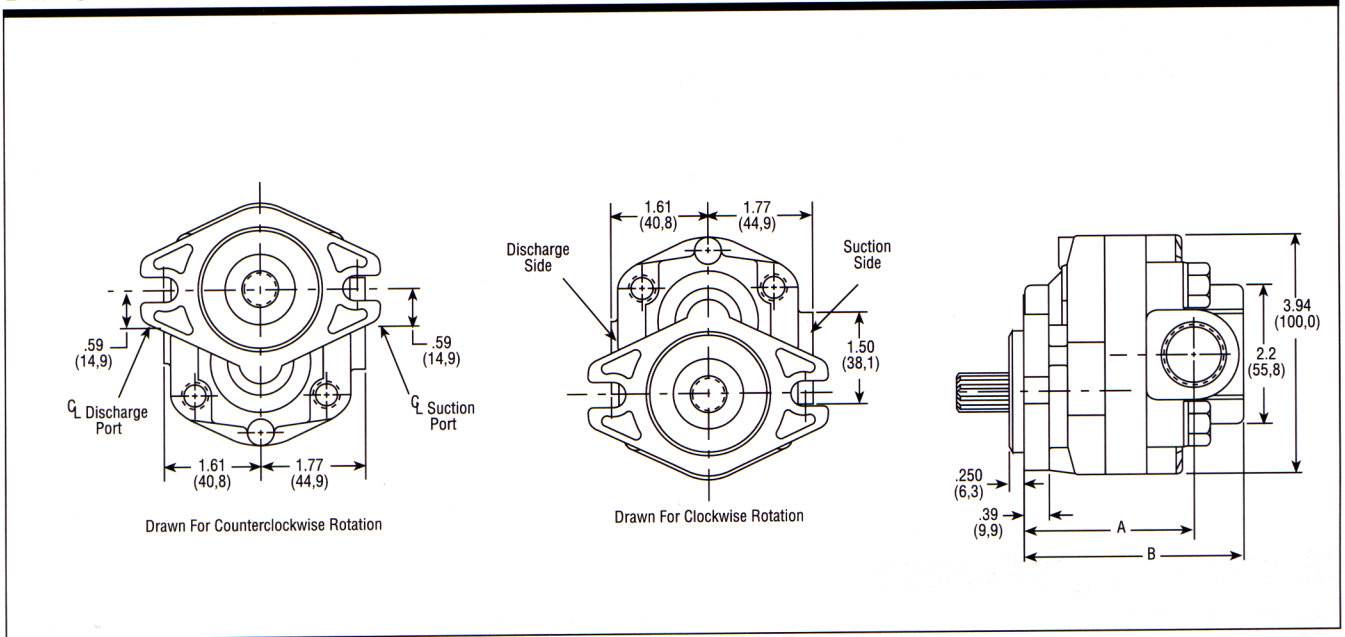
# Mounting Flanges Available

<p><b>D SAE 'A' 2-Bolt</b></p> <p>.44 Dia. (11,1) 2 Places</p> <p>3.250 (82,5) Pilot Dia.</p> <p>4.44 (112,7)</p> <p>1.88 R. (47,7)</p> <p>2.09 (53,1)</p> <p>4.18 (106,3)</p> <p>5.12 (130,0)</p>	<p><b>K SAE 'AA' 2-Bolt</b></p> <p>3.00 (76,2)</p> <p>2.000 (50,80) PILOT</p> <p>1.998 (50,74) DIA.</p> <p>Mtg. Slots 2 Places</p> <p>1.29 R (32,7)</p> <p>1.61 (40,8)</p> <p>3.23 (82,9)</p> <p>3.98 (101,0)</p>
--	---

# Cover Plates Available

<p><b>5 Side Ported Straight Thread</b></p> <p>SAE 8 3/4-16UN-2B</p> <p>SAE 12 1-1/16-12UN-2B</p> <p>Discharge Suction</p>	<p><b>6 Rear Ported Straight Thread</b></p> <p>Suction SAE12 1-1/16-12UN-2B</p> <p>Discharge SAE 8 3/4-16UN-2B</p>
--	--

## Dimensional Data



## Mounting Dimensions

PUMP MODEL	A		B		SHIPPING WEIGHT (Approx.)	
					LBS.	KGS.
P12 - 17	2.56	(65,02)	3.36	(85,34)	2.25	1.02
P12 - 22	2.68	(68,07)	3.48	(88,39)	2.50	1.13
P12 - 28	2.80	(71,12)	3.60	(91,44)	2.75	1.28
P12 - 34	2.94	(74,67)	3.74	(94,99)	3.25	1.47
P12 - 40	3.05	(77,47)	3.85	(97,79)	3.50	1.58
P12 - 45	3.17	(80,51)	3.97	(100,83)	4.25	1.92