

Model M25

Description Gear Motors
 Flow Range To 166 GPM (628.3 LTR.)
 Displacements To 19.22 C.I.R. (314.96 CC's/REV.)
 Maximum Pressure to 2500 PSI (172 BAR)
 Maximum Speed to 2000 RPM
 Rotation Bi-Directional
 Bearings Journal
 Construction Aluminum

Performance Data

MOTOR SECTION MODELS	SECTION SIZE	DISPLACEMENT/REVOLUTION (Theoretical)					Torque Per 1000 PSID				Power at Max. RPM & Max. PSID		Relief Setting		Continuous Pressure Speed		
		US Gallons	Cubic Inches	Liters	Cubic Cm's	Imperial Gallons	Start Lb.In.	Run Nm	Start Nm	Run Lb.In.	Run Nm	H.P.	KW	PSI	BAR	PSI	BAR
M25	550	.0479	11.06	.181	181.24	.040	1400	1898	1600	2169	122	91.0	2500	172	1700	117	2000
M25	660	.0581	13.42	.220	219.91	.048	1760	2386	1960	2657	146	109.0	2500	172	1700	117	2000
M25	770	.0671	15.50	.254	254.00	.056	1820	2467	2200	1629	828	125.3	2500	172	1700	117	2000
M25	950	.0832	19.22	.315	314.96	.069	2295	3111	2818	1873	820	139.4	2200	152	1700	117	2000

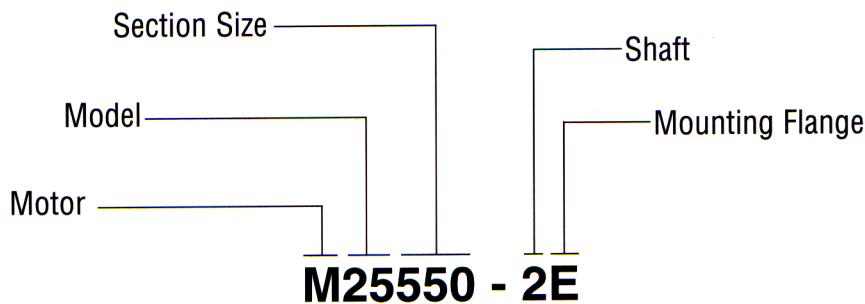
All data based on SAE 10W oil at 150°F. Available with Viton Seals for use with phosphate ester base fluids.
 *Average values from performance curves.
 **At 2200 PSI.

CAUTION: If return line pressure exceeds 150 PSIG, the external bearing drain must be utilized.

When sizing motors, refer to the performance charts in the back of the catalog to determine the volumetric efficiency and input horsepower requirements.

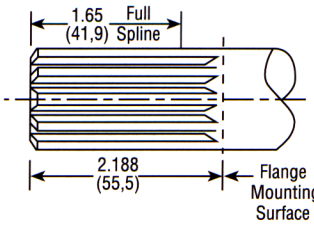
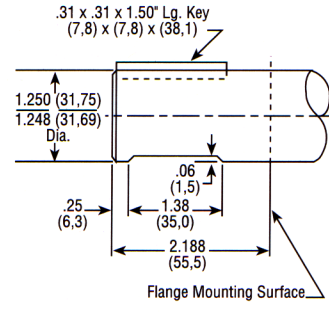
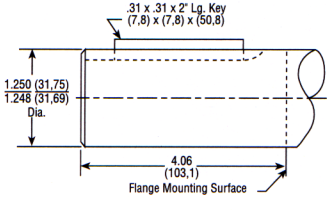
How To Order

'A' denotes counterclockwise rotation
 'C' denotes clockwise rotation
 When viewed from drive shaft end

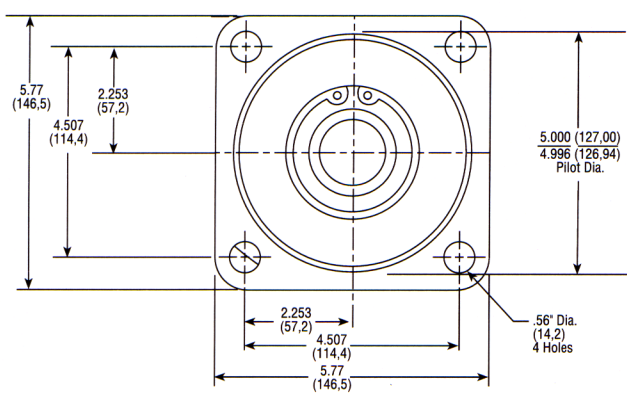
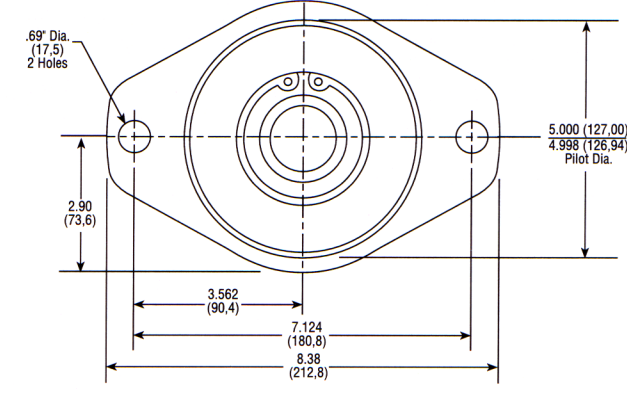


Note: Add prefix 'V' to pump model number (VM25) when ordering pumps with Viton Seals for use with phosphate ester base fluids.

Shafts Available

<p>1 SAE 'C' 1-1/4" 14-Tooth Spline Flat Root Side Fit Torque Limit 655 Lbs. Ft. (888, Nm)</p>  <p>Spline Data Diametral Pitch 12/24 Pressure Angle 30° No. Of Teeth 14</p>	<p>2 SAE 'C' 1-1/4" Dia. Straight Shaft Torque Limit 655 Lbs. Ft. (888, Nm)</p> <p>CAUTION: Due to shaft torque limitations, Consult the Factory for approval before applying this shaft in models of -350 size and larger pumps.</p> 	<p>5 1-1/4" Straight Shaft Torque Limit 655 Lbs. Ft. (888, Nm)</p> 
---	---	---

Mounting Flanges Available

<p>E SAE 'C' 4-Bolt</p> 	<p>F SAE 'C' 2-Bolt</p> 
--	--

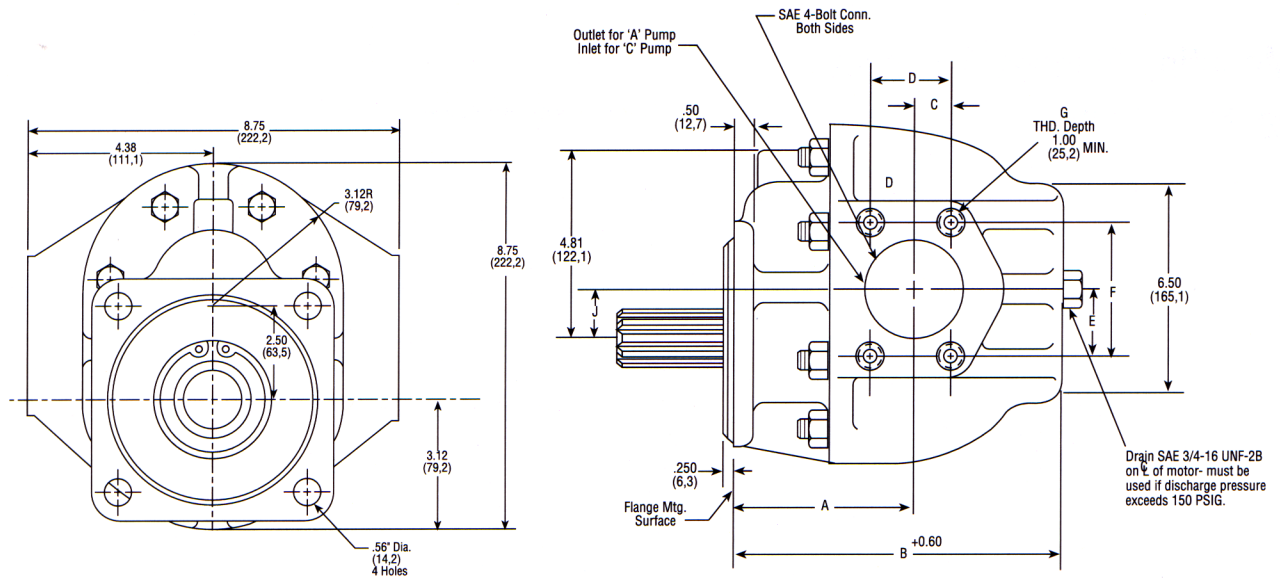
Dimensional Data

Mounting Dimensions

MOTOR MODEL	For 'C' 2-Bolt & 'C' 4-Bolt Fig.		SAE 4-Bolt Conn. Port		Shipping Weights (Approx.)	
	A	B	Inlet	Outlet	lbs.	kgs.
M20550	5.06 (128,5)	8.81 (223,7)	2"	2"	45	20.41
M20660	5.31 (134,8)	9.06 (230,1)	2"	2"	46	20.87
M20770	5.56 (141,2)	9.31 (236,4)	2"	2"	48	21.77
M20950	6.21 (157,7)	9.95 (252,7)	2"	2"	49	22.23

SAE 4-Bolt Connector Ports

Size	C	D	E	F	G
2"	.84 (21,3)	1.688 (42,8)	1.53 (38,8)	3.062 (77,7)	1/2-13NC



* These dimensions locate \varnothing of bolt pattern only

SAE 4-Bolt NPT Connectors are available. See Accessory Section