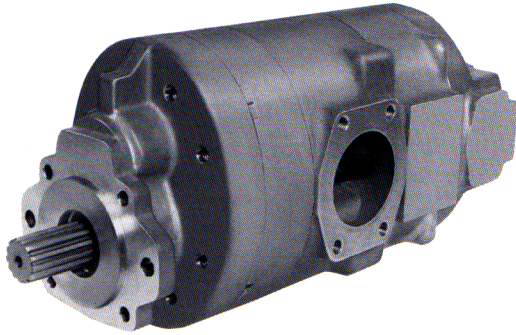


Model HP8-THP8



Description Gear Pumps
 Flow Range To 177 GPM Per Section (670.0 LTR.)
 Displacements To 16.38 C.I.R. Per Section (268.42 CC's/REV.)
 Maximum Pressure to 4000 PSI (276 BAR)
 Maximum Speed to 2500 RPM
 Rotation A or C
 Bearings Journal
 Construction. Aluminum

Performance Data

PUMP MODEL	SECTION SIZE	DISPLACEMENT/REVOLUTION (Theoretical)					MAXIMUM PRESSURE		MAXIMUM SPEED
		US Gallons	Cubic Inches	Liters	Cubic Centimeters	Imperial Gallons	PSI	BAR	RPM*
HP8	400	.0339	7.83	.1283	128.311	.028	4000	276	2500
HP8	450	.0379	8.75	.1434	143.387	.032	4000	276	2500
HP8	500	.0422	9.75	.1598	159.774	.035	4000	276	2500
HP8	550	.0465	10.74	.1760	175.997	.039	4000	276	2500
HP8	600	.0510	11.78	.1930	193.040	.042	4000	276	2500
HP8	660	.0565	13.05	.2138	213.852	.047	3600	248	2500
HP8	770	.0650	15.01	.2460	245.970	.054	3300	228	2500
HP8	850	.0709	16.38	.2683	268.421	.059	3000	207	2500

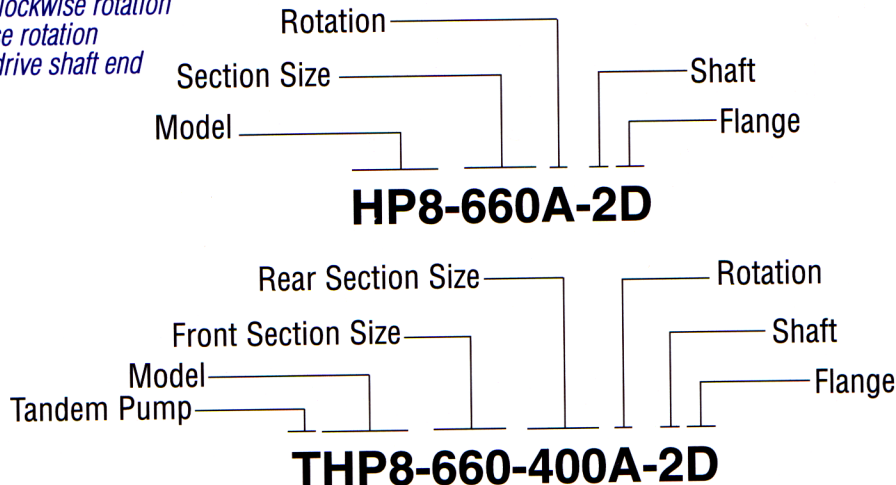
All data based on SAE 10W oil at 150°F. Available with Viton seals for use with phosphate ester base fluids.
 Note: Pressurized suction required: Speeds to 2000 RPM require 0 PSI minimum. *Speeds above 2000 RPM require the suction to be pressurized to 5 PSI minimum.

CAUTION: "Inlet vacuum" should not exceed 5" Hg at normal operating speed and temperature.
 Operation of pumps in excess of 5" Hg requires factory approval.

When sizing pumps, refer to the performance charts in the back of the catalog to determine the volumetric efficiency and input horsepower requirements.

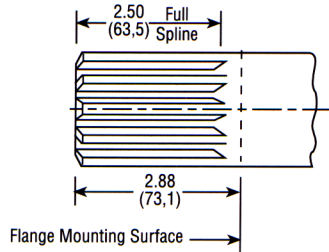
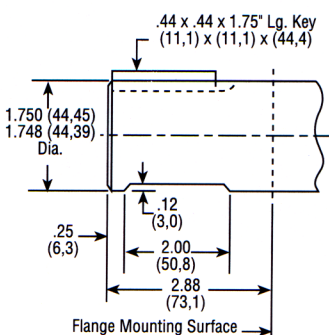
How To Order

'A' denotes counterclockwise rotation
 'C' denotes clockwise rotation
 When viewed from drive shaft end

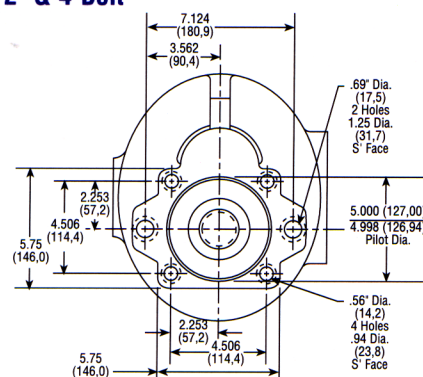
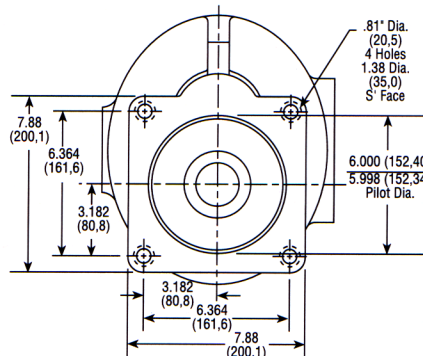


Note: Add prefix 'V' to pump model number (VHP8) (VTHP8) when ordering pumps with Viton Seals for use with phosphate ester base fluids.

Shafts Available

<p>2 1-3/4" 13 Tooth Spline Flat Root Side Fit Torque Limit 1800 Lbs. Ft. (2440,4 Nm)</p>  <p>Spline Data Diametral Pitch 8/16 Pressure Angle 30° No. Of Teeth 13</p>	<p>4 1-3/4" Straight Shaft Torque Limit 1800 Lbs. Ft. (2440,4 Nm)</p> 
--	---

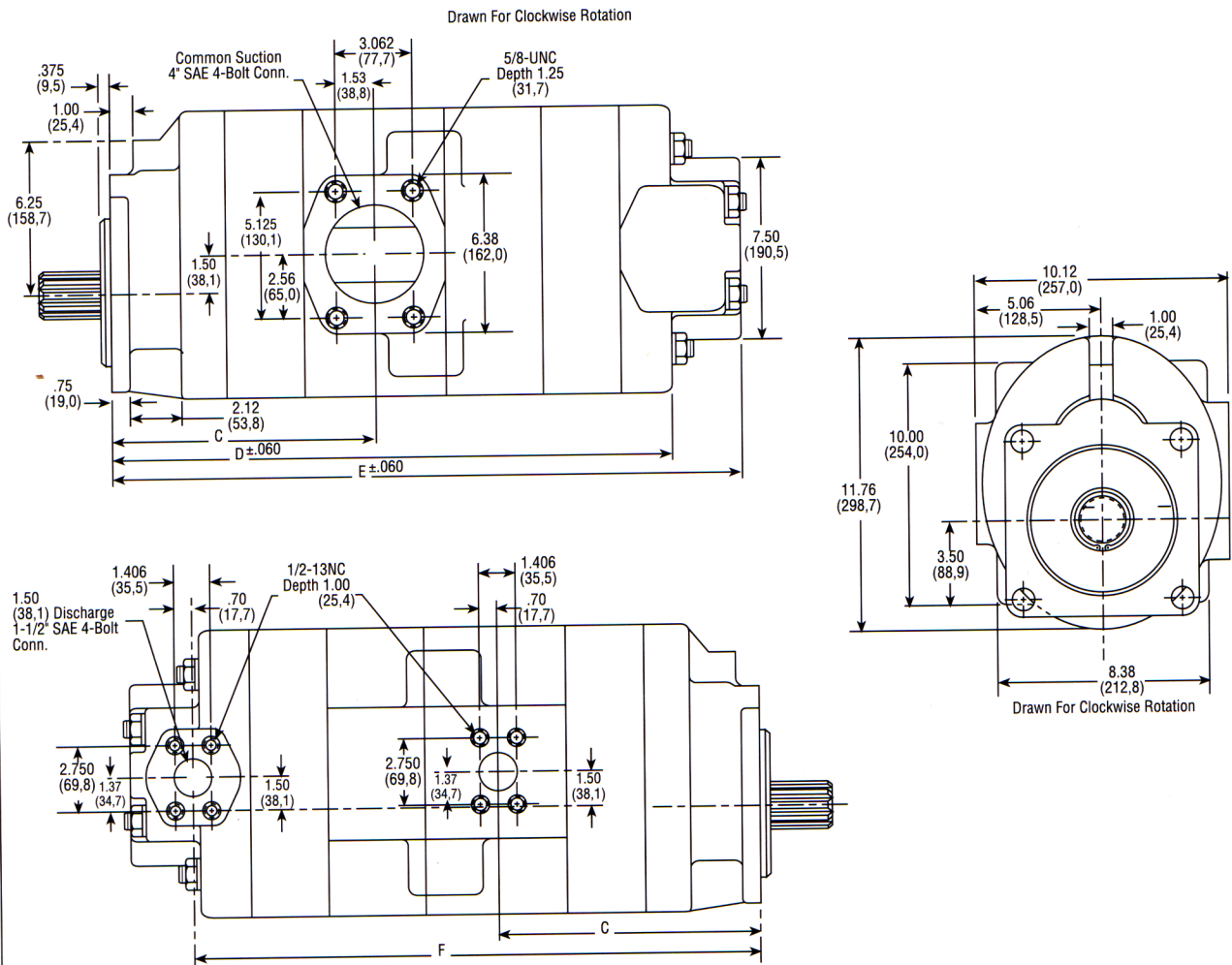
Mounting Flanges Available

<p>D SAE 'C' 2- & 4-Bolt</p> 	<p>E SAE 'D' 4-Bolt</p> 
---	---

Dimensional Data

Mounting Dimensions

COMBINATIONS AVAILABLE	C	D	E	F	COMBINATIONS AVAILABLE	C	D	E	F
THP8-400 - 400 A & C	9.87 (250,6)	20.98 (532,8)	23.86 (606,0)	21.42 (544,0)	THP8-660 - 550 A & C	10.77 (273,5)	22.38 (568,4)	25.26 (641,6)	22.82 (579,6)
THP8-450 - 400 A & C	10.03 (254,7)	21.14 (536,9)	24.02 (610,1)	21.58 (548,1)	THP8-660 - 600 A & C	10.77 (273,5)	22.56 (573,0)	25.44 (646,1)	23.00 (584,2)
THP8-450 - 450 A & C	10.03 (254,7)	21.30 (541,0)	24.18 (614,1)	21.74 (552,1)	THP8-660 - 660 A & C	10.77 (273,5)	22.78 (578,6)	25.66 (651,7)	23.22 (589,7)
THP8-500 - 400 A & C	10.20 (259,9)	21.31 (541,2)	24.19 (614,4)	21.75 (552,4)	THP8-770 - 400 A & C	11.12 (282,4)	22.23 (564,6)	25.11 (637,7)	22.67 (575,8)
THP8-500 - 450 A & C	10.20 (259,0)	21.47 (545,3)	24.35 (618,4)	21.91 (556,5)	THP8-770 - 450 A & C	11.12 (282,4)	22.39 (568,7)	25.27 (641,8)	22.83 (579,8)
THP8-500 - 500 A & C	10.20 (259,0)	21.64 (549,6)	24.52 (622,8)	22.08 (560,8)	THP8-770 - 500 A & C	11.12 (282,4)	22.56 (573,0)	25.44 (646,1)	23.00 (584,2)
THP8-550 - 400 A & C	10.37 (263,3)	21.48 (545,5)	24.36 (618,7)	21.92 (556,7)	THP8-770 - 550 A & C	11.12 (282,4)	22.73 (577,3)	25.61 (650,4)	23.17 (588,5)
THP8-550 - 450 A & C	10.37 (263,3)	21.64 (549,6)	24.52 (622,8)	22.08 (560,8)	THP8-770 - 600 A & C	11.12 (282,4)	22.91 (581,9)	25.79 (655,0)	23.35 (593,0)
THP8-550 - 500 A & C	10.37 (263,3)	21.81 (553,9)	24.69 (627,1)	22.25 (565,1)	THP8-770 - 660 A & C	11.12 (282,4)	23.13 (587,5)	26.01 (660,6)	23.57 (598,6)
THP8-550 - 550 A & C	10.37 (263,3)	21.98 (558,2)	24.86 (631,4)	22.42 (569,4)	THP8-770 - 770 A & C	11.12 (282,4)	23.48 (596,3)	26.36 (669,5)	23.92 (607,5)
THP8-600 - 400 A & C	10.55 (267,9)	21.66 (550,1)	24.54 (623,3)	22.10 (561,3)	THP8-850 - 400 A & C	11.36 (288,5)	22.47 (570,7)	25.35 (643,8)	22.91 (581,9)
THP8-600 - 450 A & C	10.55 (267,9)	21.82 (554,2)	24.70 (627,3)	22.26 (565,4)	THP8-850 - 450 A & C	11.36 (288,5)	22.63 (574,8)	25.51 (647,9)	23.07 (585,9)
THP8-600 - 500 A & C	10.55 (267,9)	21.99 (558,5)	24.87 (631,6)	22.43 (569,7)	THP8-850 - 500 A & C	11.36 (288,5)	22.80 (579,1)	25.68 (652,2)	23.24 (590,2)
THP8-600 - 550 A & C	10.55 (267,9)	22.16 (562,8)	25.04 (636,0)	22.60 (574,0)	THP8-850 - 550 A & C	11.36 (288,5)	22.97 (583,4)	25.85 (656,5)	23.41 (594,6)
THP8-600 - 600 A & C	10.55 (267,9)	22.34 (567,4)	25.22 (640,5)	22.78 (578,6)	THP8-850 - 600 A & C	11.36 (288,5)	23.15 (588,0)	26.03 (661,1)	23.59 (599,1)
THP8-660 - 400 A & C	10.77 (273,5)	21.88 (555,7)	24.76 (628,9)	22.32 (566,9)	THP8-850 - 660 A & C	11.36 (288,5)	23.37 (593,5)	26.25 (666,7)	23.81 (604,7)
THP8-660 - 450 A & C	10.77 (273,5)	22.04 (559,8)	24.92 (632,9)	22.48 (570,9)	THP8-850 - 770 A & C	11.36 (288,5)	23.72 (602,4)	26.60 (675,6)	24.16 (613,6)
THP8-660 - 500 A & C	10.77 (273,5)	22.21 (564,1)	25.09 (637,2)	22.65 (575,3)	THP8-850 - 850 A & C	11.36 (288,5)	23.96 (608,5)	26.84 (681,7)	24.40 (619,7)



* These dimensions locate \bar{C} of bolt pattern only

SAE 4-Bolt NPT Connectors are available. See Accessory Section