

Model ER

Description Dry Valve

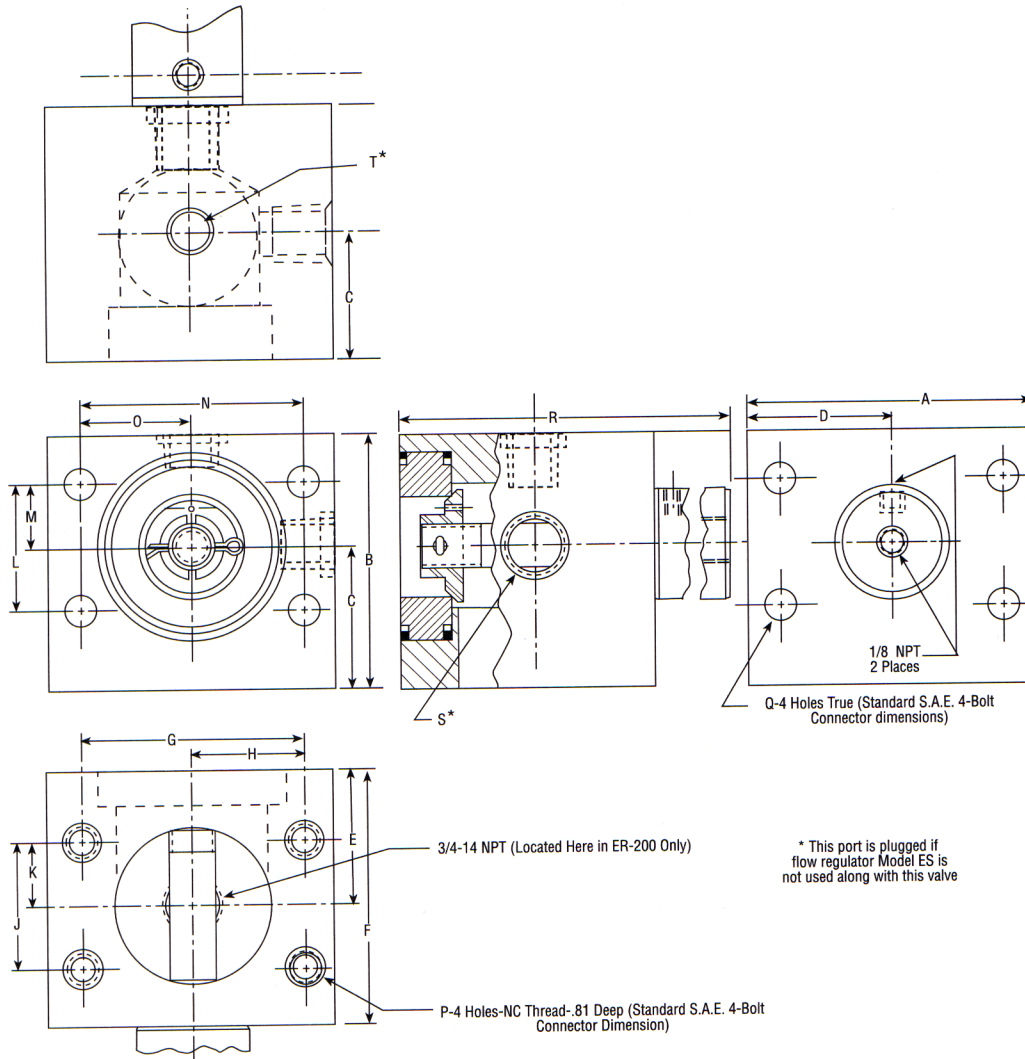
Dimensional Data

Mounting Dimensions

VALVE SIZE	A	B	C	D	E	F	G	H	J
ER-125	3.12 (79,2)	3.00 (76,2)	1.75 (44,4)	1.56 (39,6)	1.50 (38,1)	3.00 (76,2)	2.313 (57,7)	1.15 (29,2)	1.188 (30,1)
ER-150	4.00 (101,6)	3.62 (91,9)	2.00 (50,8)	2.00 (50,8)	1.50 (38,1)	3.00 (76,2)	2.750 (69,8)	1.37 (34,7)	1.406 (35,7)
ER-200	4.50 (114,3)	4.00 (101,6)	2.12 (53,8)	2.25 (57,1)	2.25 (57,1)	4.00 (101,6)	3.062 (77,7)	1.53 (38,8)	1.688 (42,8)
ER-250	4.50 (114,3)	4.00 (101,6)	2.25 (57,1)	2.25 (57,1)	2.12 (53,8)	4.00 (101,6)	3.500 (88,9)	1.75 (44,4)	2.000 (50,8)

Mounting Dimensions

VALVE SIZE	K	L	M	N	O	P	Q	T	S	T
ER-125	.59 (14,9)	1.188 (30,1)	.59 (14,9)	2.313 (58,7)	1.15 (29,2)	7/16-14 1/2 (12,7)	7.40 (187,9)	—	—	#12 SAE
ER-150	.70 (17,3)	1.406 (35,7)	.70 (17,7)	2.750 (69,8)	1.37 (34,7)	1/2-13 9/16 (14,2)	7.40 (187,90)	—	—	#12 SAE
ER-200	.84 (21,3)	1.688 (42,8)	.84 (21,3)	3.062 (77,7)	1.53 (38,8)	1/2-13 9/16 (14,2)	10.21 (259,3)	—	—	3/4 NPT
ER-260	1.00 (25,4)	2.000 (50,8)	1.00 (25,4)	3.500 (88,9)	1.75 (44,4)	1/2-13 9/16 (14,2)	10.21 (259,3)	3/4 NPT	—	—



* This port is plugged if flow regulator Model ES is not used along with this valve

CAUTION See "General Product & Safety Information" on inside front cover of this catalog **WARNING**