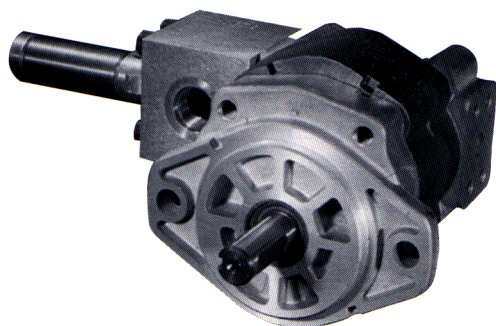


Model DVP16



Description Dry Valve Pumps
 Flow Range . To 25 GPM (94.6 LTR) @ 1200 RPM
 Displacements . . To 3.902 C.I.R. (63.94 CC's/REV.)
 Maximum Pressure to 3000 PSI (207 BAR)
 Maximum Speed to 3600 RPM
 Rotation A or C
 Bearings Journal
 Construction Aluminum and Cast Iron

Performance Data

PUMP MODELS	SECTION SIZE	DISPLACEMENT/REVOLUTION (Theoretical)					Maximum Pressure		MAX (RPM) Pumping Mode
		US Gallons	Cubic Inches	Liters	Cubic Centimeters	Imperial Gallons	PSI	BAR	
		DVP16	45	.0038	.878	.0144	14.388	.003	3000
DVP16	65	.0055	1.270	.0208	20.812	.005	3000	207	3600
DVP16	85	.0072	1.663	.0273	26.760	.006	3000	207	3400
DVP16	100	.0085	1.964	.0321	32.184	.007	3000	207	3300
DVP16	115	.0097	2.241	.0367	36.723	.008	3000	207	3100
DVP16	150	.0127	2.934	.0481	48.080	.011	3000	207	2800
DVP16	180	.0152	3.511	.0575	57.535	.013	2200	152	2500
DVP16	200	.0169	3.902	.0639	63.942	.014	2000	138	2200

All data based on SAE 10W oil at 150°F. Available with Viton Seals for use with phosphate ester base fluids. Consult factory for application of tandem units. Maximum speed in dry mode is 3600 RPM.

CAUTION: "Inlet vacuum" should not exceed 5" Hg at normal operating speed and temperature. Operation of pumps in excess of 5" Hg requires factory approval.

When sizing pumps, refer to the performance charts in the back of the catalog to determine the volumetric efficiency and input horsepower requirements.

How To Order

'A' denotes counterclockwise rotation
 'C' denotes clockwise rotation
 When viewed from drive shaft end

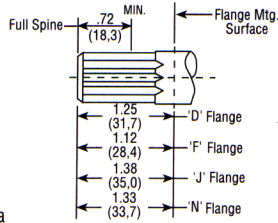


Note: Add prefix 'V' to pump model number (VDVP16) when ordering pumps with Viton Seals for use with phosphate ester base fluids.

Shafts Available

1 5/8" Dia. 9-Tooth Spline Flat Root Side Fit Torque Limit 52 Lbs. Ft. (70,5 Nm) Available with 'D', 'F' & 'N' Flanges Only

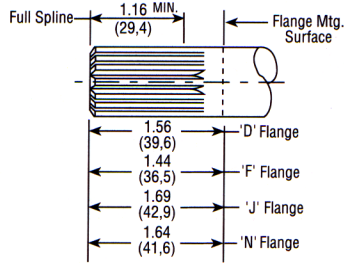
CAUTION: Due to shaft torque limitations, Consult the Factory for approval before applying this shaft in models of -85 size and larger pumps.



Spline Data

Diametral Pitch 16/32
Pressure Angle 30°
No. Of Teeth 9

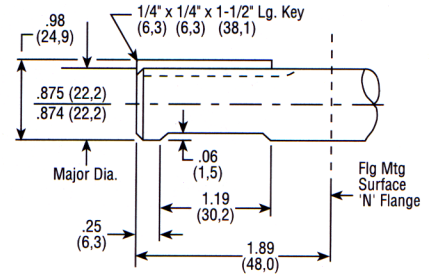
2 7/8" Dia. 13-Tooth Spline Flat Root Side Fit Torque Limit 184 Lbs. Ft. (249,4 Nm)



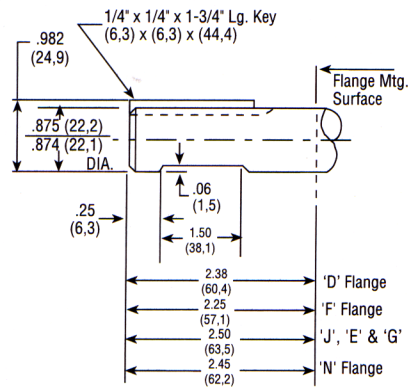
Spline Data

Diametral Pitch 16/32
Pressure Angle 30°
No. Of Teeth 13

3 7/8" Straight Shaft for Piggy Back Torque Limit 184 Lbs. Ft. (249,4 Nm) Available with 'N' Flange Only

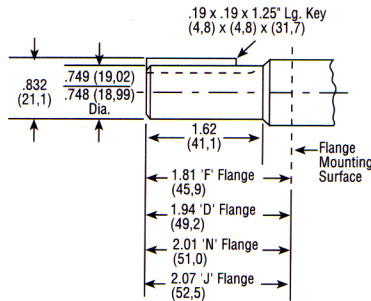


5 7/8" Straight Shaft Torque Limit 184 Lbs. Ft. (249,4 Nm)

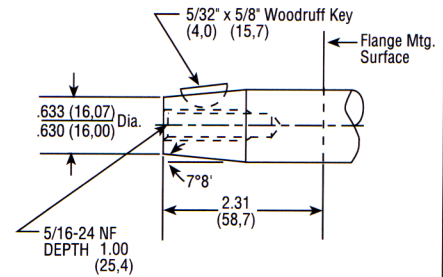


6 3/4" Straight Shaft Torque Limit 105 Lbs. Ft. (142,5 Nm)

CAUTION: Due to shaft torque limitations, Consult the Factory for approval before applying this shaft in models of -115 size and larger pumps.



9 7/8" Tapered Shaft Torque Limit 184 Lbs. Ft. (249,4 Nm) Available with 'D' Flange Only

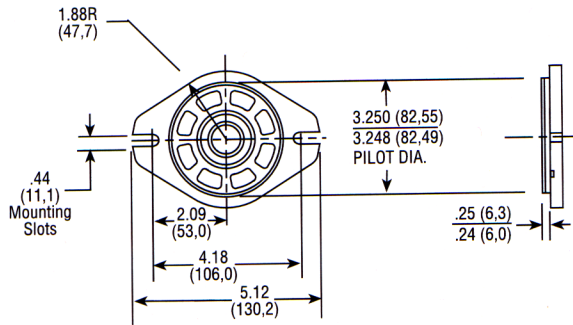


See "General Product & Safety Information" on inside front cover of this catalog



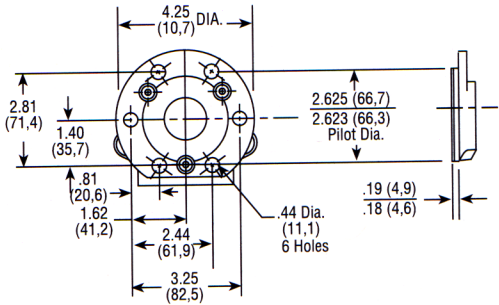
Mounting Flanges Available

D SAE 'A' 2-Bolt

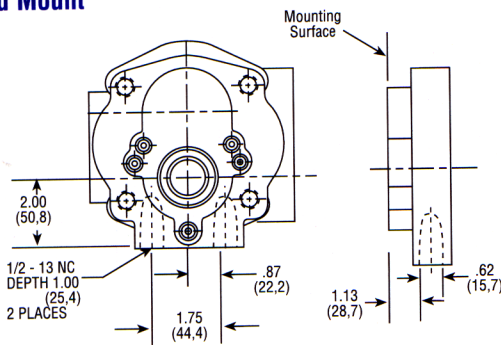


E 6-Bolt Round

Available with No. 2 or 5 Shaft Only

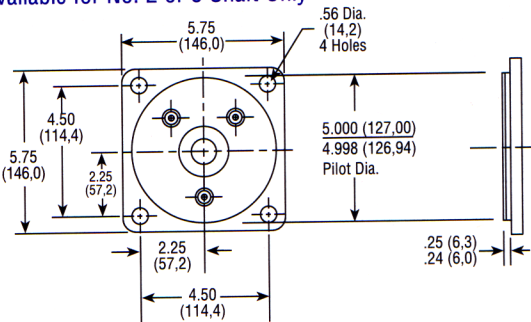


F Pad Mount



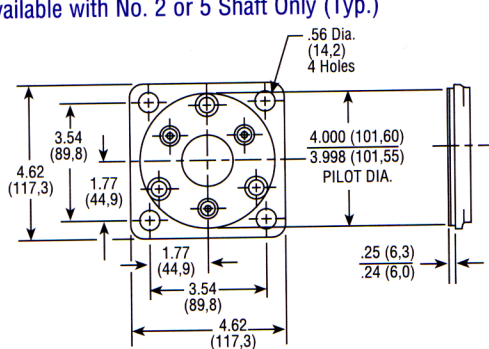
G SAE 'C' 4-Bolt

Available for No. 2 or 5 Shaft Only

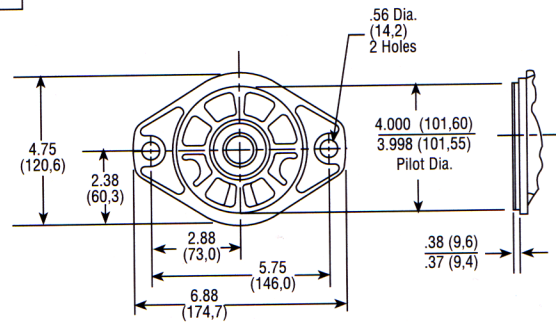


J SAE 'B' 4-Bolt

Available with No. 2 or 5 Shaft Only (Typ.)

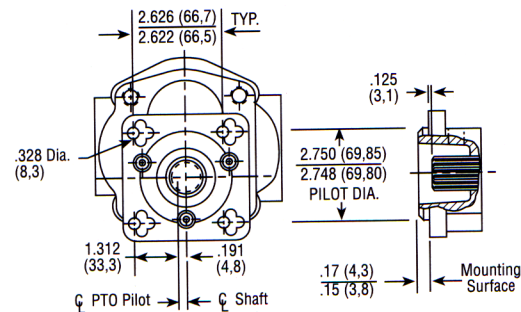


N SAE 'B' 2-Bolt



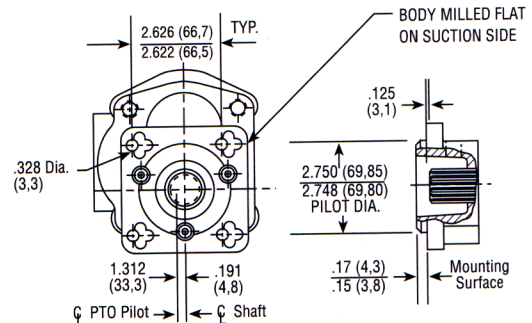
S P.T.O. Direct Mount

Available with No. 2 Shaft Only



T P.T.O. Direct Mount T19C Trans

Available with No. 2 Shaft Only



Dimensional Data

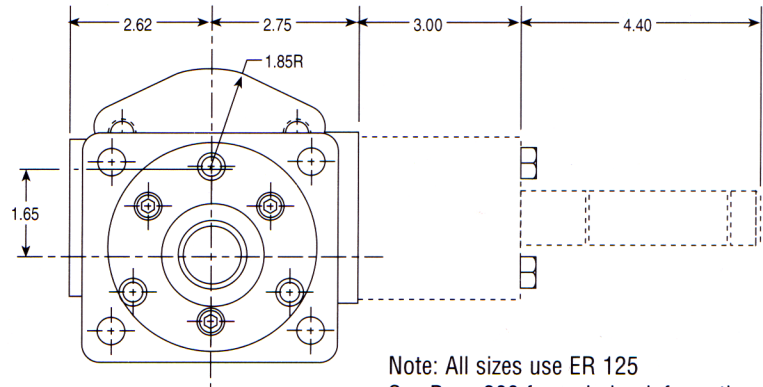
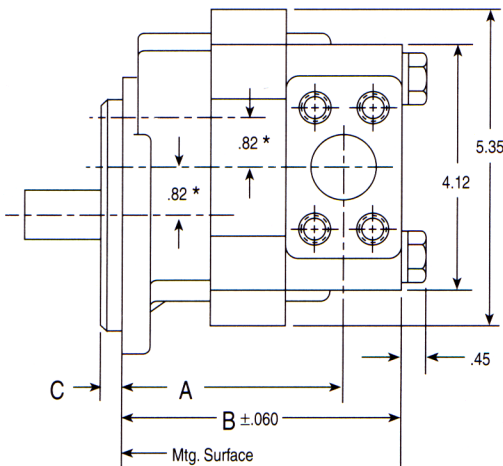
Mounting Dimensions

PUMP SIZES	FLANGE TYPE									
	E, G & J		N		S & T		D		F	
	A	B	A	B	A	B	A	B	A	B
DVP16 - 45	4.66	5.67	3.47	4.48	5.22	6.23	3.54	4.55	3.66	4.67
DVP16 - 65	4.88	5.89	3.69	4.70	5.44	6.45	3.75	4.77	3.88	4.89
DVP16 - 85	5.09	6.10	3.90	4.91	5.65	6.66	3.97	4.98	4.09	5.10
DVP16 - 100	5.25	6.26	4.06	5.07	5.81	6.82	4.13	5.14	4.25	5.26
DVP16 - 115	5.41	6.42	4.22	5.23	5.97	6.98	4.29	5.30	4.41	5.42
DVP16 - 150	5.78	6.79	4.59	5.60	6.34	7.35	4.66	5.67	4.78	5.79
DVP16 - 180	6.10	7.11	4.91	5.92	6.66	7.67	4.98	5.99	5.10	6.11
DVP16 - 200	6.31	7.32	5.12	6.13	6.87	7.88	5.19	6.20	5.31	6.32

C Dimensions

Note: See P 16 Curves for Performance Data.

FLANGE TYPE	IN
D	.250
E	.187
F	—
G	.250
J	.250
N	.375
S	.200
T	.200



Note: All sizes use ER 125
See Page 209 for ordering information.

* These dimensions locate ϕ of bolt pattern only

SAE 4-Bolt NPT Connectors are available. See Accessory Section



See "General Product & Safety Information" on inside front cover of this catalog

