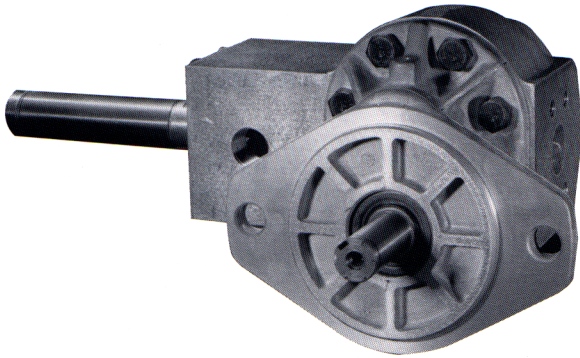


Model DV20



Description Dry Valve Pumps
 Flow Range To 47 GPM (177.9 LTR) @ 1200 RPM
 Displacements . To 9.101 C.I.R. (149.13 CC's/REV.)
 Maximum Pressure to 2500 PSI (172 BAR)
 Maximum Speed to 2500 RPM
 Rotation A or C
 Bearings Journal
 Construction Aluminum

Performance Data

PUMP MODELS	SECTION SIZE	DISPLACEMENT/REVOLUTION (Theoretical)					MAXIMUM PRESSURE		MAXIMUM SPEED
		US Gallons	Cubic Inches	Liters	Cubic Centimeters	Imperial Gallons	PSI	BAR	RPM
DV20	150	.0131	3.026	.0496	49.587	.011	2500	172	2500
DV20	200	.0175	4.043	.0662	66.253	.015	2500	172	2500
DV20	250	.0219	5.059	.0829	82.902	.018	2500	172	2500
DV20	300	.0262	6.052	.0992	99.175	.022	2500 ⁽¹⁾	172	2500
DV20	350	.0306	7.069	.1158	115.840	.025	2500 ⁽²⁾	172	2500
DV20	400	.0350	8.085	.1325	132.490	.029	2500	172	2500
DV20	450	.0394	9.101	.1491	149.139	.033	2500	172	2500

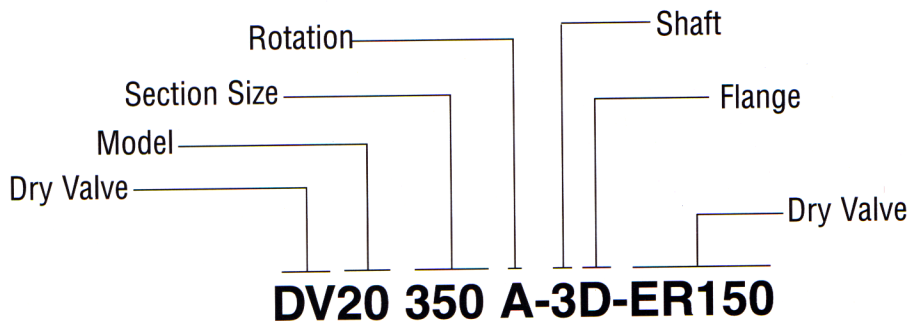
Notes: (1) 2100 PSI maximum due to torque limitations of No. 4 shaft. (2) 1800 PSI maximum due to torque limitations of No. 4 shaft.
 All data based on SAE 10W oil at 150°F. Available with Viton Seals for use with phosphate ester base fluids.
 *Case iron is not available on all models. Consult factory for availability. Consult factory for application of tandem units.

CAUTION: "Inlet vacuum" should not exceed 5" Hg at normal operating speed and temperature. Operation of pumps in excess of 5" Hg requires factory approval.

When sizing pumps, refer to the performance charts in the back of the catalog to determine the volumetric efficiency and input horsepower requirements.

How To Order

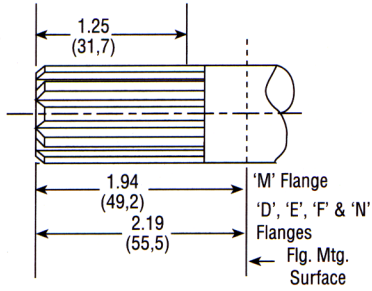
'A' denotes counterclockwise rotation
 'C' denotes clockwise rotation
 When viewed from drive shaft end



Note: Add prefix "V" to pump model number (VDV20) when ordering pumps with Viton Seals.

Shafts Available for DV20

1 SAE 'C' 1-1/4" 14-Tooth Spline Flat Root Side Fit Torque Limit 655 Lbs. Ft. (888, Nm) "Single" Pumps Only

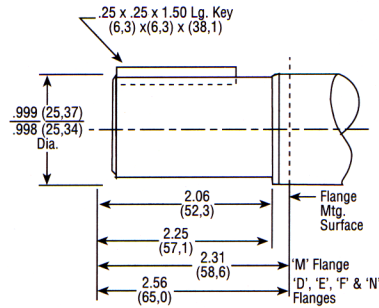


Spline Data

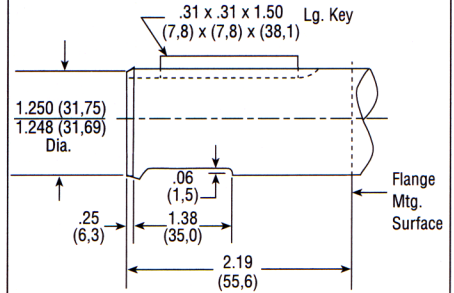
Diametral Pitch 12/24
Pressure Angle 30°
No. Of Teeth 14

2 1" Dia. Straight Shaft Torque Limit 655 Lbs. Ft. (462,3 Nm)

CAUTION: Due to shaft torque limitations, Consult the Factory for approval before applying this shaft in models of -350 size and larger pumps.

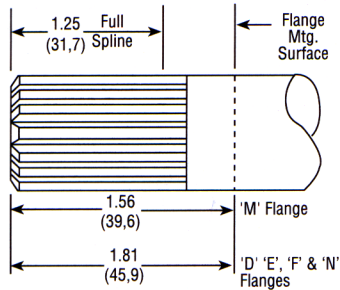


3 SAE 'C' 1-1/4" Straight Shaft Torque Limit 655 Lbs. Ft. (888, Nm) Available On All Sizes



4 7/8" Dia. 13-Tooth Spline Flat Root Side Fit Torque Limit 655 Lbs. Ft. (249,4 Nm)

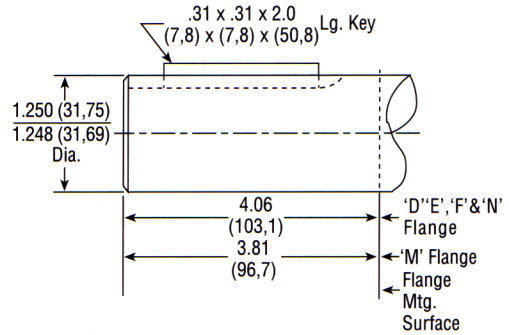
CAUTION: Due to shaft torque limitations, Consult the Factory for approval before applying this shaft in models of -300 size and larger pumps.



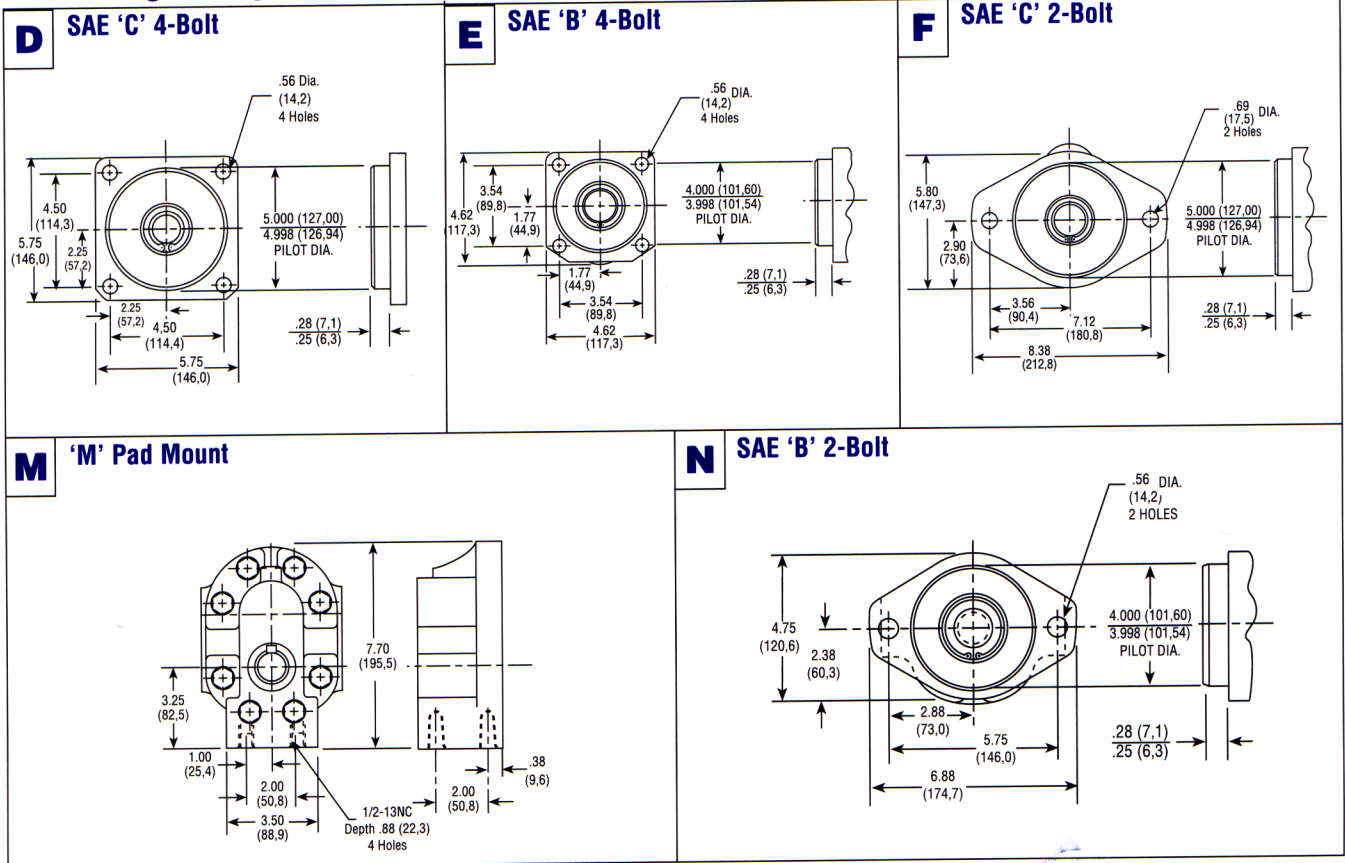
Spline Data

Diametral Pitch 16/32
Pressure Angle 30°
No. Of Teeth 13

5 1-1/4" Straight Shaft Torque Limit 655 Lbs. Ft. (888, Nm) Available On All Sizes.



Mounting Flanges Available



Dimensional Data

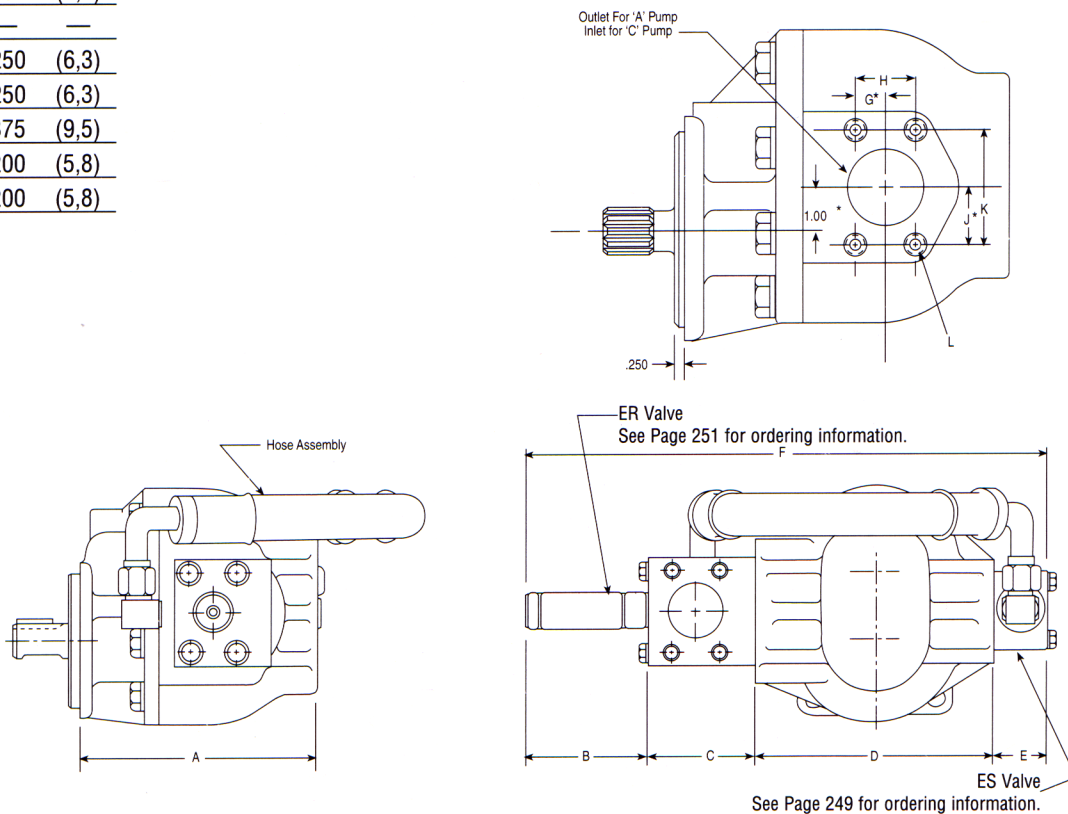
Mounting Dimensions

PUMP SIZES	FLANGE TYPE									
	E, G & J		N		S & T		D		F	
	A	B	A	B	A	B	A	B	A	B
DVP16 45	4.66 (118,3)	5.67 (144,0)	3.47 (88,1)	4.48 (113,7)	5.22 (132,5)	6.23 (158,2)	3.54 (89,9)	4.55 (115,5)	3.66 (92,9)	4.67 (118,6)
DVP16 65	4.88 (123,9)	5.89 (149,6)	3.69 (93,7)	4.70 (119,3)	5.44 (138,1)	6.45 (163,8)	3.75 (95,2)	4.77 (121,1)	3.88 (98,5)	4.89 (124,2)
DVP16 85	5.09 (129,2)	6.10 (154,9)	3.90 (99,0)	4.91 (124,7)	5.65 (143,5)	6.66 (169,1)	3.97 (100,8)	4.98 (126,4)	4.09 (103,8)	5.10 (129,5)
DVP16 100	5.25 (133,3)	6.26 (159,0)	4.06 (103,1)	5.07 (128,7)	5.81 (147,5)	6.82 (173,2)	4.13 (104,9)	5.14 (130,5)	4.25 (107,9)	5.26 (133,6)
DVP16 115	5.41 (137,4)	6.42 (163,0)	4.22 (107,1)	5.23 (132,8)	5.97 (151,6)	6.98 (177,2)	4.29 (108,9)	5.30 (134,6)	4.41 (112,0)	5.42 (137,6)
DVP16 150	5.78 (146,8)	6.79 (172,4)	4.59 (116,5)	5.60 (142,2)	6.34 (161,0)	7.35 (186,6)	4.66 (118,3)	5.67 (144,0)	4.78 (121,4)	5.79 (147,0)
DVP16 180	6.10 (154,9)	7.11 (180,5)	4.91 (124,7)	5.92 (150,3)	6.66 (169,1)	7.67 (194,8)	4.98 (126,4)	5.99 (152,1)	5.10 (129,5)	6.11 (155,1)
DVP16 200	6.31 (160,2)	7.32 (185,9)	5.12 (130,0)	6.13 (155,7)	6.87 (174,4)	7.88 (200,1)	5.19 (131,8)	6.20 (157,4)	5.31 (134,8)	6.32 (160,5)

C Dimensions

FLANGE TYPE	IN	C
D	.250	(6,3)
E	.187	(4,7)
F	—	—
G	.250	(6,3)
J	.250	(6,3)
N	.375	(9,5)
S	.200	(5,8)
T	.200	(5,8)

Note: See P 16 Curves for Performance Data.



* These dimensions locate \bar{C} of bolt pattern only

SAE 4-Bolt NPT Connectors are available. See Accessory Section

