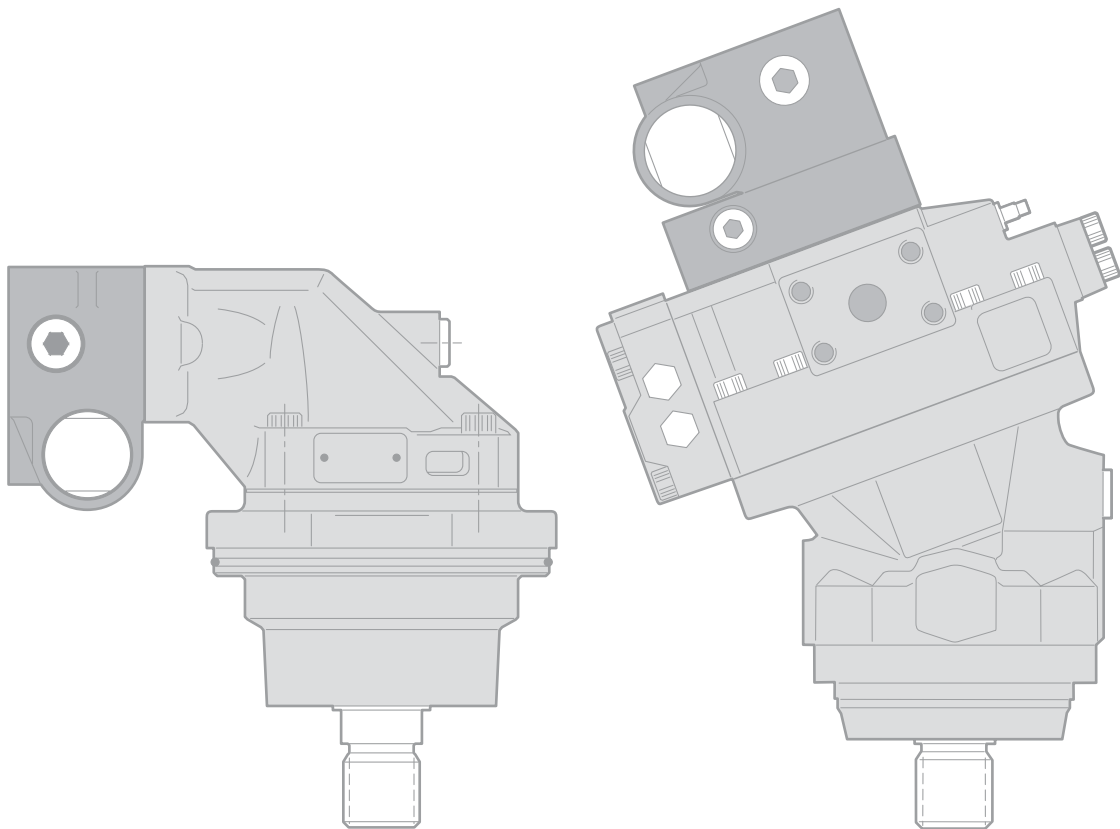




Mobile motor/pump accessories

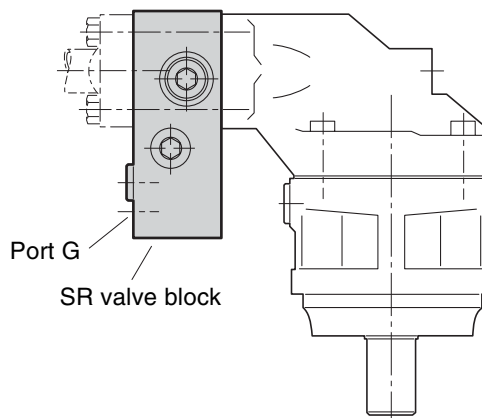
*Catalogue HY17- 8258/UK
November 2004*



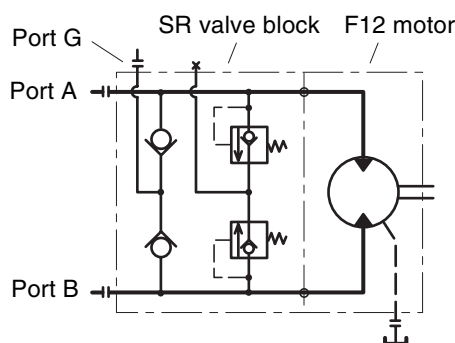
General information

- The SR pressure relief/make-up valve block for series F12 and V12 motors is designed to protect the motor and the main hydraulic lines from short duration pressure spikes. The valve block also provides an excellent make-up function.
- The valve block installes directly on the motor port flange, and is available in three sizes:
 - a) 3/4" for F12-30/-40/-60, T12-60 and V12-60/-80
 - b) 1" for F12-80, T12-80 and V12-110
 - c) 1 1/4" for F12-110 and V12-160.
- The SR valve block consists of a housing containing two high pressure relief cartridges and two separate check valves for make-up. Cartridges are available in non-adjustable pressure settings between 280 and 420 bar (4 000 and 6 000 psi respectively).
- A make-up port (G) is also provided. In certain operating conditions, the motor (when operating as a pump) may cavitate because of insufficient inlet pressure. To prevent this, the G port should be pressurized. Contact Parker Hannifin (Mobile Controls Division) for further information.
- The pressure drop through the main ports (A-A' or B-B') is low. As an example, the pressure drop on size 1 (3/4") is 0.45 bar (6.5 psi) at 175 l/min, and on size 2 (1") 0.7 bar (10 psi) at 250 l/min.

NOTE: The valve block includes main port O-rings (facing the motor) but no mounting screws.



SR valve block location.

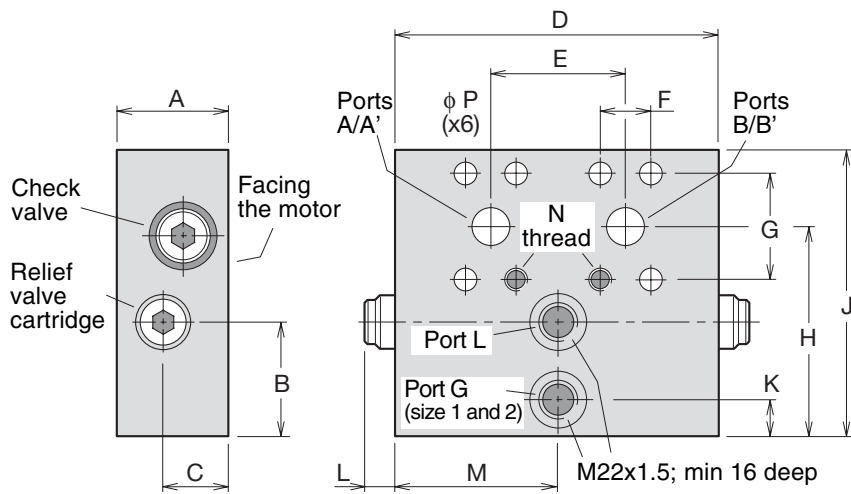


SR valve block schematic.

Ordering code

Example: **SR 1 2 - 350/350 - 00 - H F - A**

Valve function	SR	Pressure relief/ make-up valve block
Version	1	Factory assigned
Port size (SAE 6000 psi)	2	1" (F12-80 and V12-110)
Pressure setting (A/B ports) [bar]	350, 380, 400	280, 300, 330, 350, 380, 400 or 420 (³ 4000, 4350, 4800, 5000, 5800 or 6 100 psi)
	00	Serial number Factory assigned
	H	Seals Nitrile rubber
	F	Threads (port G) Metric
	A	Techn. status Factory assigned



Dim. [mm]	Size 1 (3/4")	Size 2 (1")	Size 3 (1 1/4")
A	55	57	57
B	55	55	25
C	32	32	26
D	157	160	160
E	66	75	83
F	23.8	27.8	31.8
G	50.8	57.15	66.7
H	103	109	88
J	140	150	135
K	18	18	-
L	16	16	16
M	78.5	80	-
N	M10 x18	M12 x20	M14 x23
P	11	13	15.5

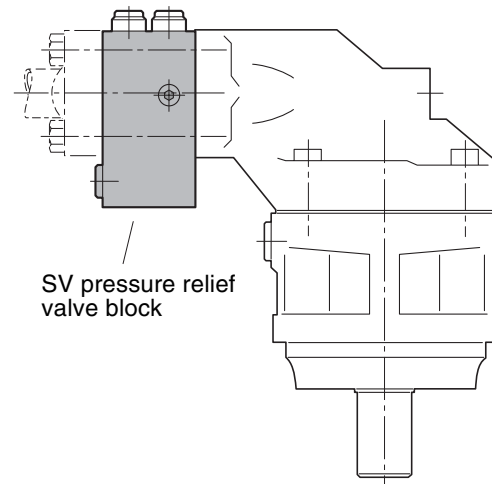
Weight [kg]	Size 1 (3/4")	Size 2 (1")	Size 3 (1 1/4")
	7.4	9.1	8.5

SV pressure relief valve

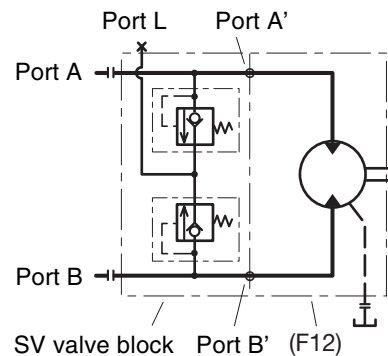
General information

- The SV pressure relief valve block for series F12 and V12 motors is designed to protect the motor and adjacent hydraulic components from short duration pressure peaks.
- It installes directly on the motor port flange and is available in three sizes:
 - '1': 3/4" for F12-30/-40/-60, T12-60 and V12-60/-80
 - '2': 1" for F12-80, T12-80 and V12-110
 - '3': 1 1/4" for F12-110 and V12-160
- The valve block consists of a housing containing two high pressure relief cartridges with anti-cavitation function. Cartridges are available in non-adjustable pressure settings between 280 and 420 bar.
- A make-up/drain port, L, is also provided. In certain operating conditions the motor may cavitate because of in-sufficient inlet pressure. To prevent this, the L port can be pressurized. When there is a risk of overheating, the L port can also be utilized to take out part of the flow for cooling. Contact Parker Hannifin (Mobile Controls Division) for further information.
- The pressure drop through the main ports (A-A' or B-B') is low. As an example, the pressure drop on size 1 (3/4") is 0.45 bar (6,5 psi) at 175 l/min (45 gpm), and on size 2 (1") 0.7 bar (10 psi) at 250 l/min (65 gpm).

- NOTE:**
- The valve block includes main port O-rings (facing the motor) but no mounting screws.
 - The valve blocks can be used on all versions of series F12 as well as V12 and T12 motors.



SV valve block installed on an F12 motor.



Hydraulic schematic.

Ordering code

Example: **SV 1 2 - 350/350 - 00 - H F - A**

Valve function — **SV** Pressure relief valve

Version — **1** Factory assigned

Port size (SAE 6000 psi) — **1** 3/4" (F12-30/-40/-60, T12-60, V12-60/-80)
2 1" (F12-80, T12-80, V12-110)
3 1 1/4" (F12-110, V12-160)

Pressure setting (A/B ports) [bar] — **280, 300, 330, 350, 380, 400 or 420**
(³4 000, 4 350, 4 800, 5 000, 5 800 or 6 100 psi)

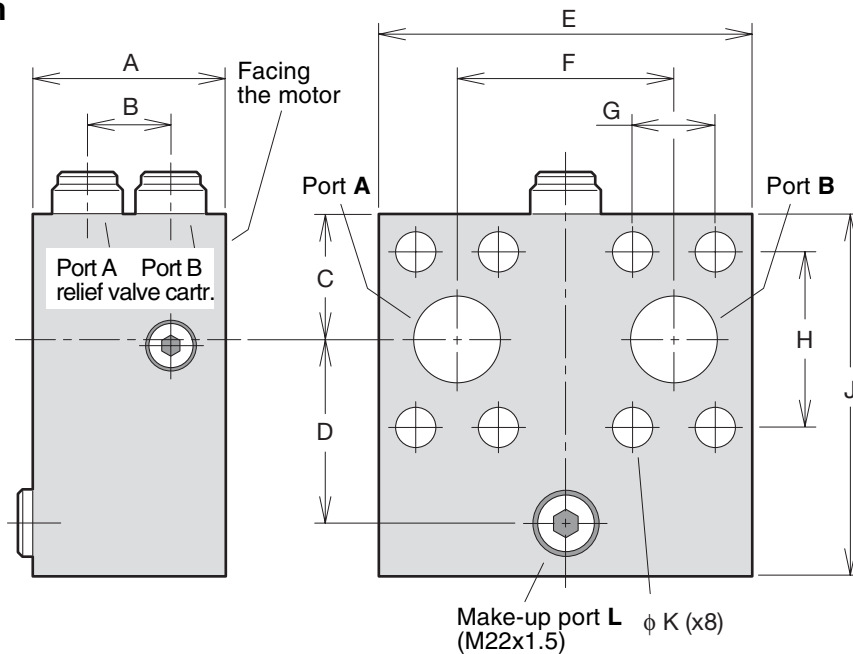
Techn. status — **A** Factory assigned

Threads (port L) — **F** Metric

Seals — **H** Nitrile rubber

Serial number — **00** Factory assigned

Installation



Dim. [mm]	SV11	SV12	SV13
A	71	73	73
B	31	31	31
C	36	41	47
D	47	51	68
E	130	127	142
F	66	75	83
G	23.8	27.8	31.8
H	50.8	57.2	66.7
J	99	109	135
K	11	13	15.5
Weight [kg]	4.2	5.0	6.7