

Series RCP

Direct-Operated, Inline-Mounted Pressure Relief Valves

These inline valves are used chiefly as remote control valves. They limit system pressure by opening to tank when pressure reaches the selected relief pressure.

When used as remote control valves, Series RCP's are piped to the vent port of a pilot-operated relief valve, such as Parker Series RP and RM valves.

Pressure relief settings are made with a self-locking knob that is pulled and turned to the proper setting. Pushing the knob in locks it positively at this setting.

Series RCP Valves are quite compact, and mount in any position. Port size is 1/4" NPTF. A panel mounting kit is available.

Operating pressure, max.: 3000 PSI (210 Bar)

Flow, max.: 1 GPM (4 L/M)

Flow, min.: 30 Cu. In./min. (492 cc./min.)

Pressure setting, min.:

50 PSI (3.4 Bar) at maximum flow.

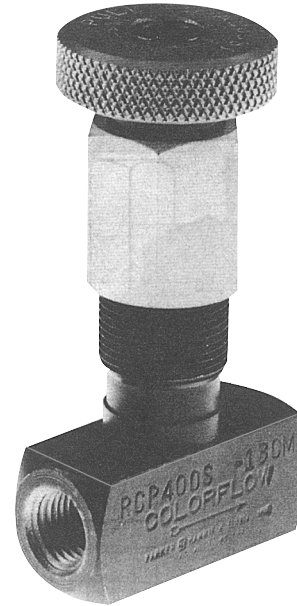
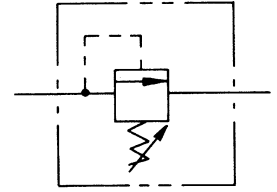
Changes in flow, viscosity, or temperature will affect minimum pressure.

Available in three pressure adjustment ranges:

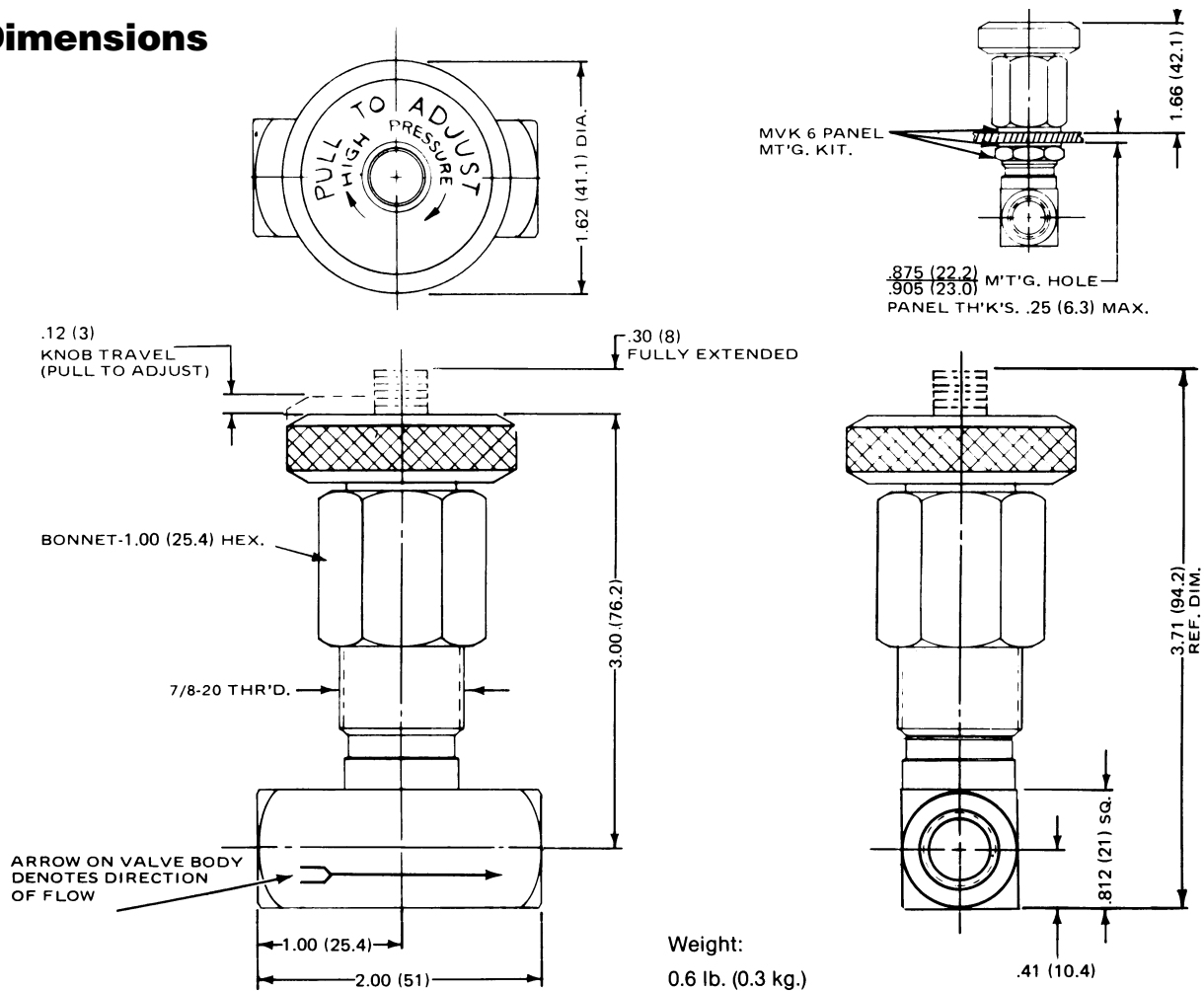
50 to 1000 PSI (3 to 70 Bar)

150 to 2000 PSI (10 to 140 Bar)

150 to 3000 PSI (10 to 210 Bar)



Dimensions



Ordering Information

Example: "RCP400SF" means Series RCP, 1/4", steel, 150—2000 PSI pressure adjustment range, standard nitrile seal.

