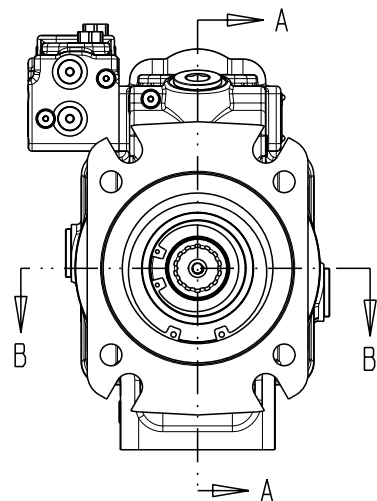
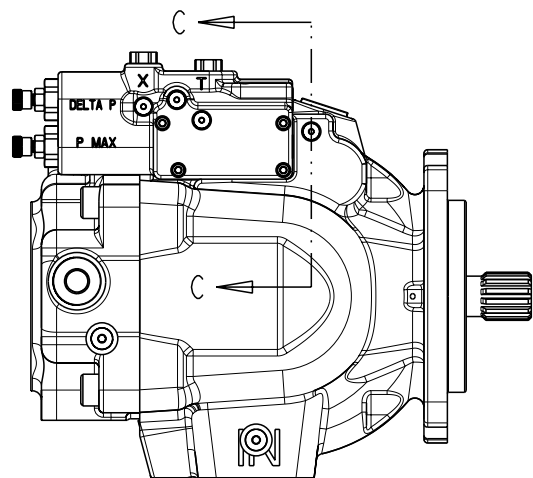
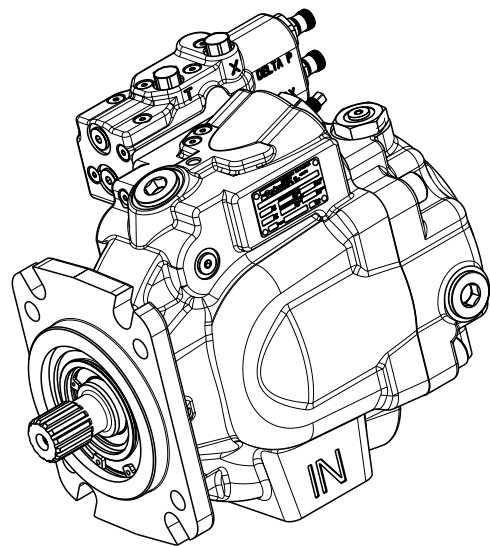
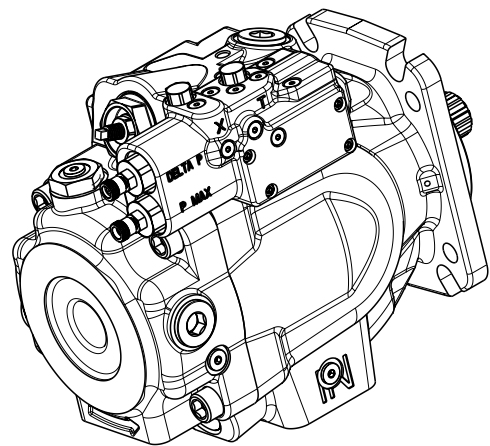
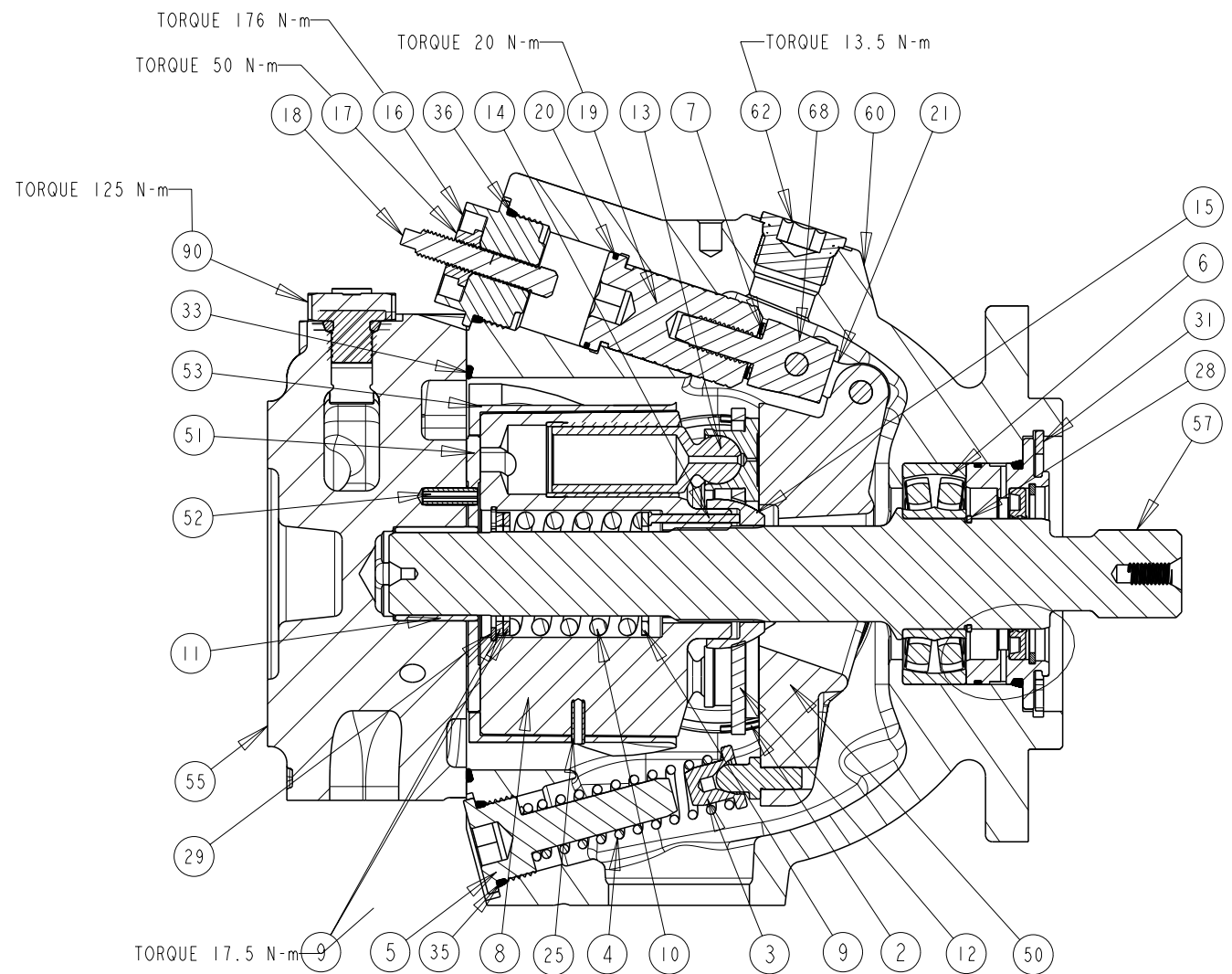


TITLE	DRAWING NUMBER	REVISION	STATUS	SHEET 1 OF 7
SERVICE PARTS P3075 DESIGN SERIES II	P2-075-0404	A	PR	

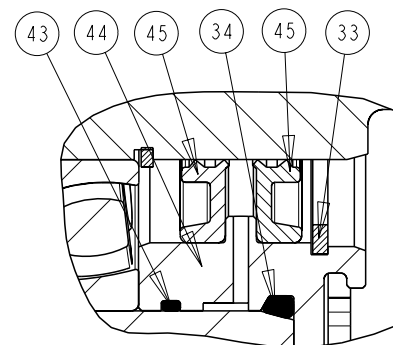
DRAWN BY	DATE	CHANGED BY	DATE	ECN NUMBER
E. BOONE	15APR02	B. LARKIN	20MAY02	133522



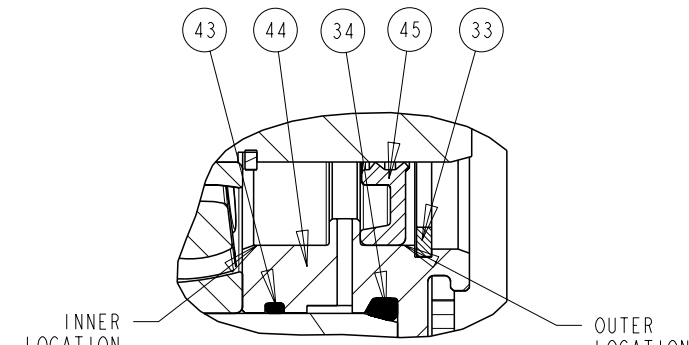
NOTES:
1 PUMP SHOWN IS A RIGHT HANDED (CW) ROTATION PUMP. LEFT HAND (CCW) ROTATION PUMPS HAVE OUTLET GAUGE PORT REVERSED.



SECTION A-A
SCALE 2:5



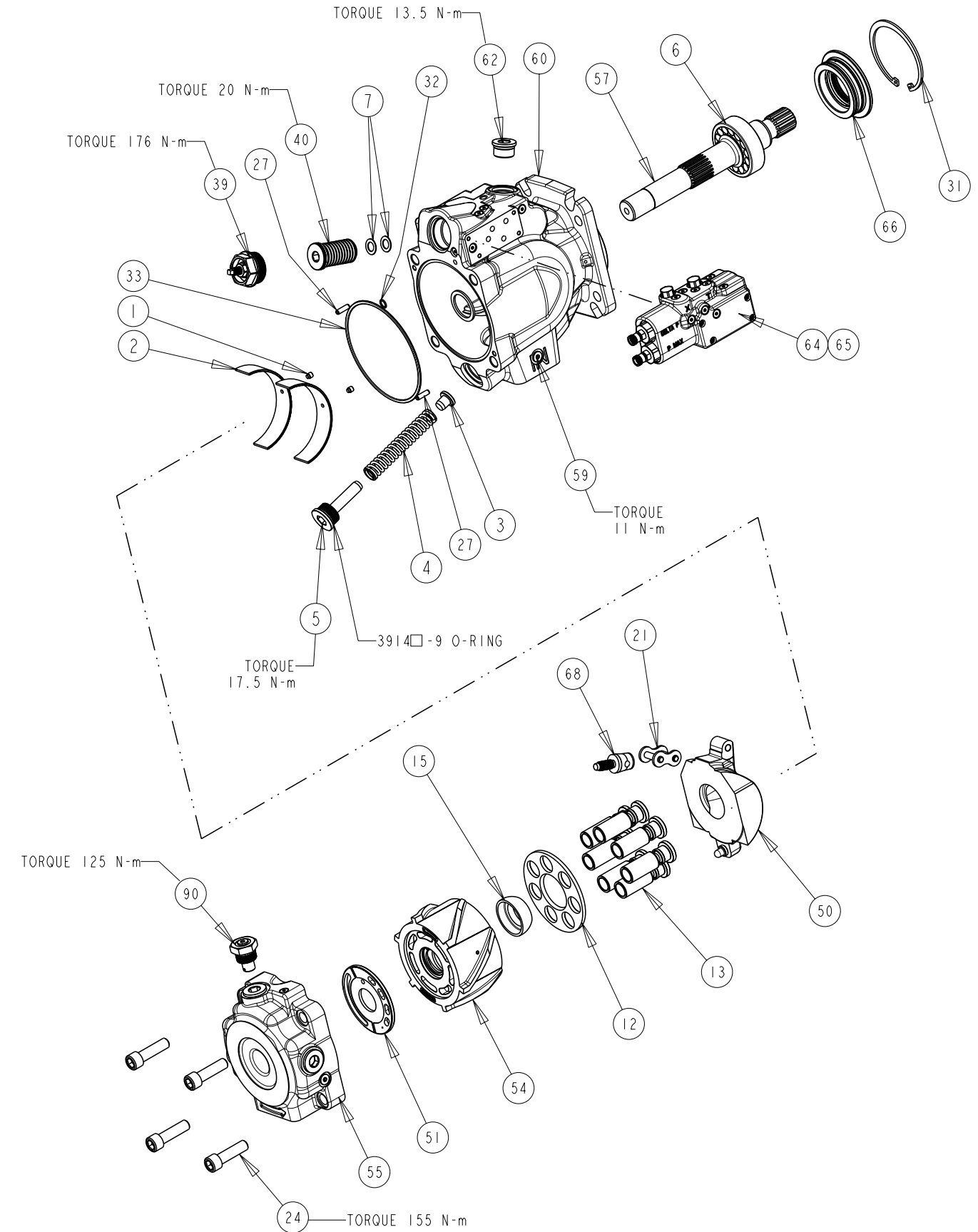
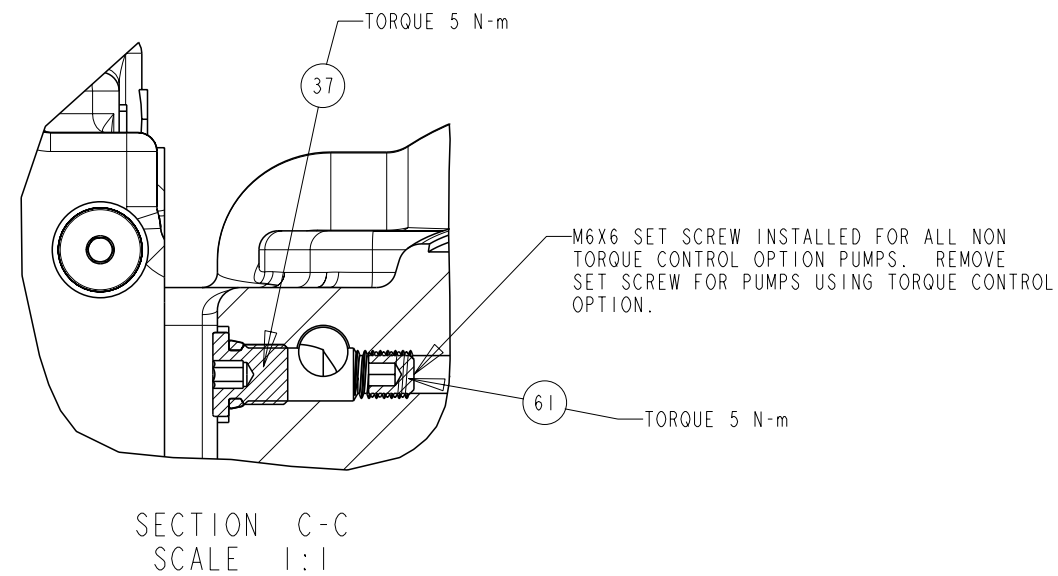
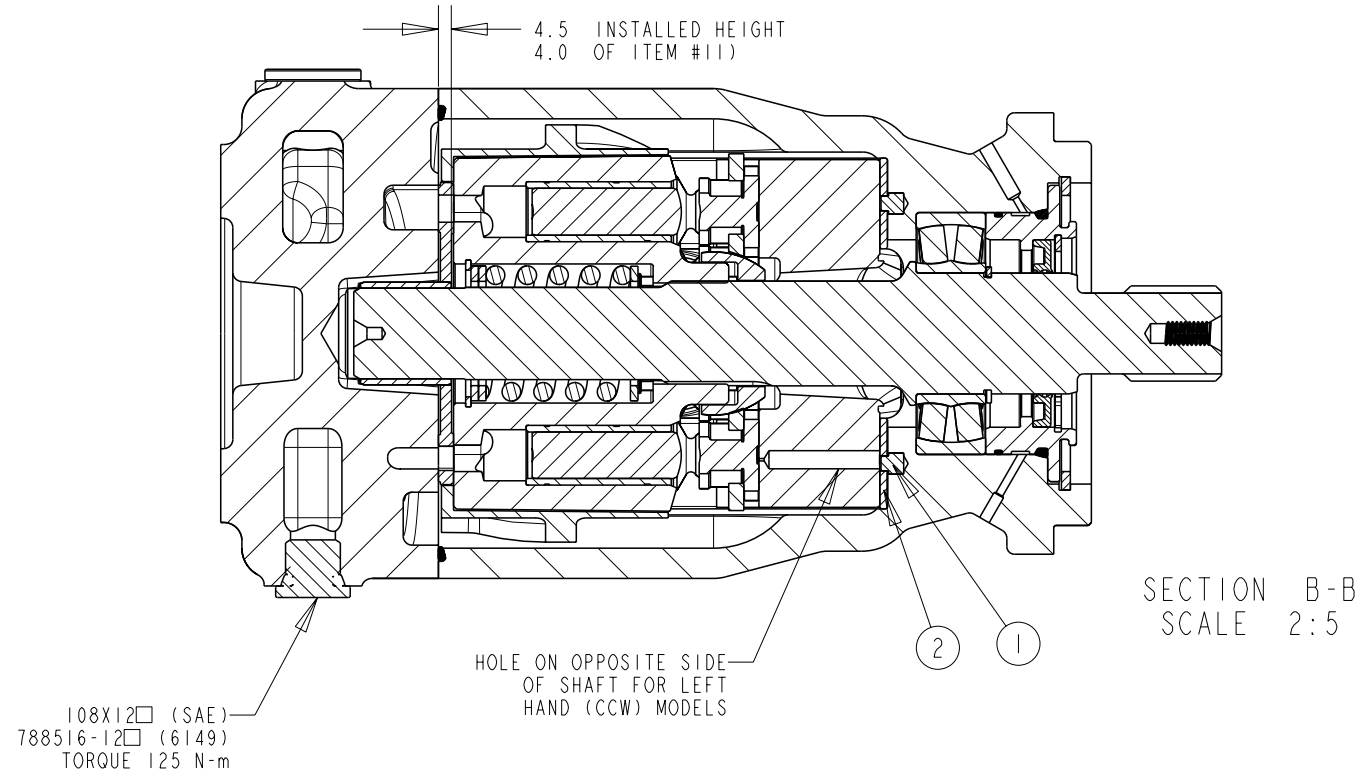
DUAL SHAFT SEAL ASSEMBLY
P2-075-0210-02
SECTION A-A
SCALE 1:1



SINGLE SHAFT SEAL ASSEMBLY
P2-075-0210-01
SECTION A-A
SCALE 1:1

TITLE	DRAWING NUMBER	REVISION	STATUS	SHEET
SERVICE PARTS P3075 DESIGN SERIES II	P2-075-0404	A	PR	2 OF 7

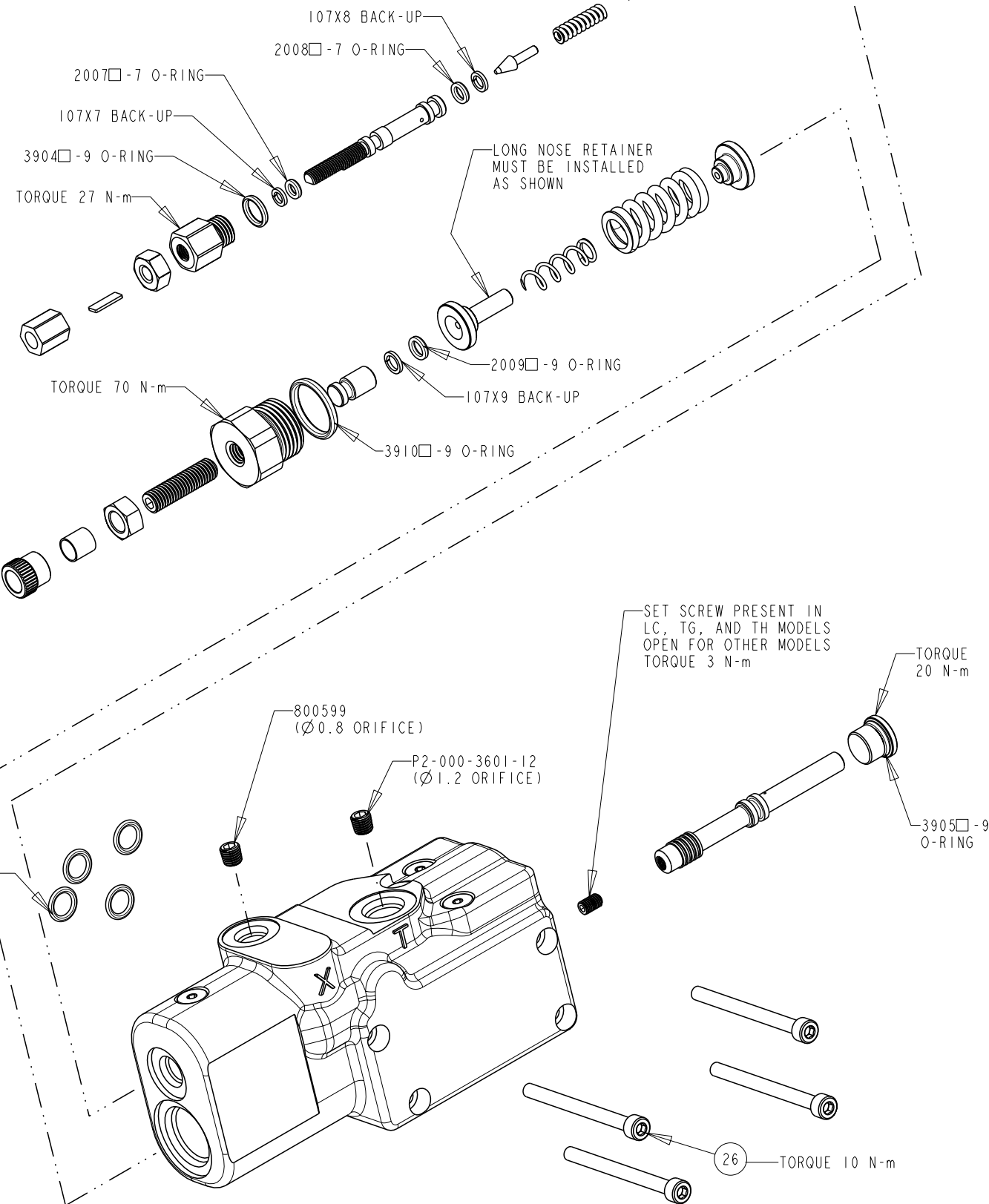
DRAWN BY	DATE	CHANGED BY	DATE	ECN NUMBER
E. BOONE	15APR02	B. LARKIN	20MAY02	133522



TITLE	DRAWING NUMBER	REVISION	STATUS	SHEET
SERVICE PARTS P3075 DESIGN SERIES II	P2-075-0404	A	PR	3 OF 7

COMPENSATOR KITS

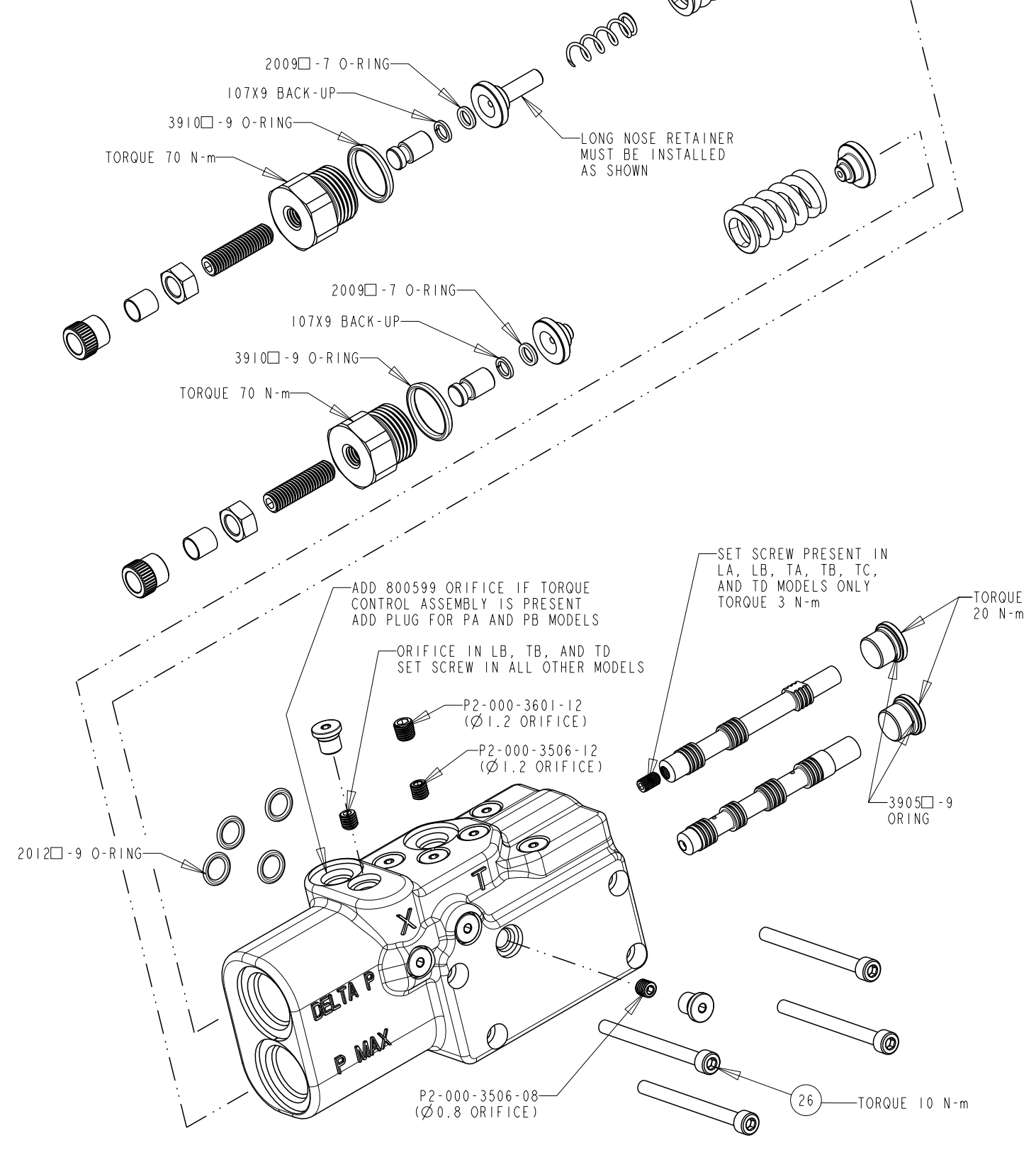
SINGLE SPOOL OPTIONS - ITEM 64



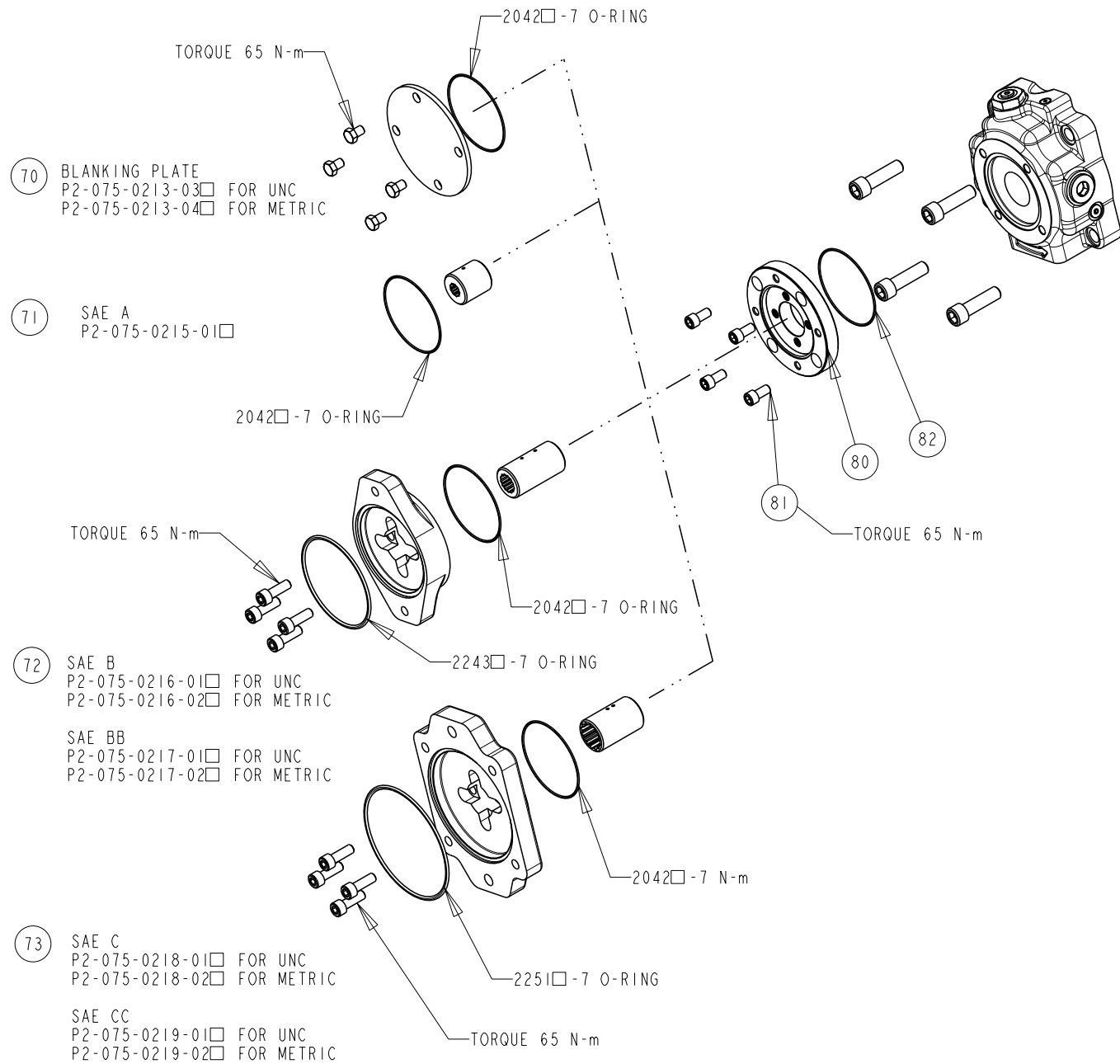
DRAWN BY	DATE	CHANGED BY	DATE	ECN NUMBER
E. BOONE	15APR02	B. LARKIN	20MAY02	133522

COMPENSATOR KITS

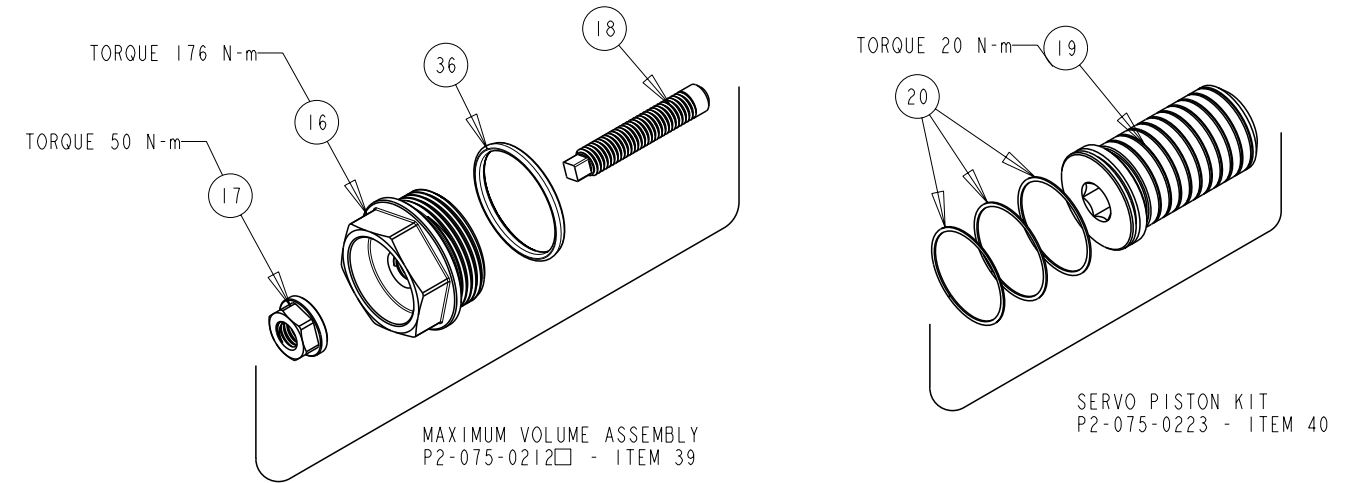
DUAL SPOOL OPTIONS - ITEM 65



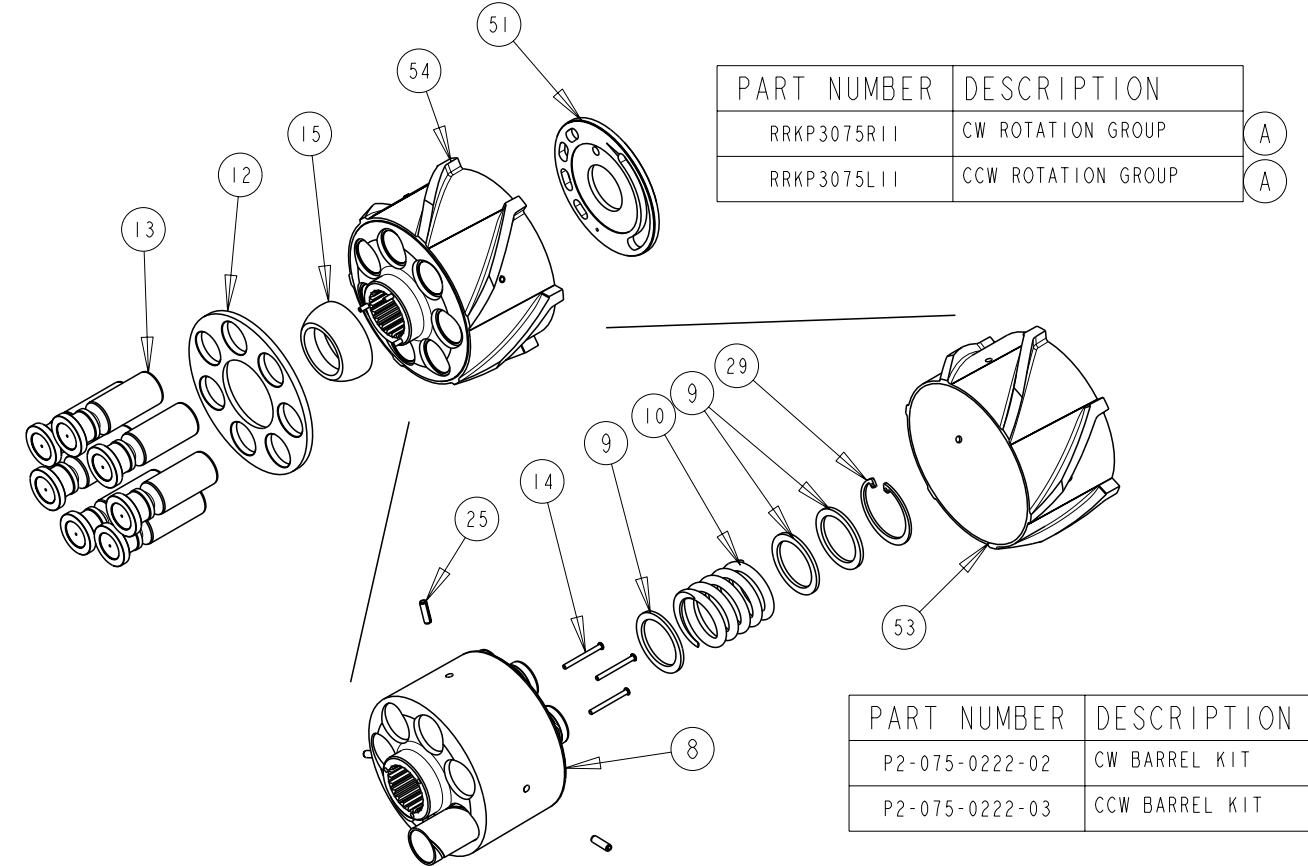
THRU SHAFT KITS



MAX VOLUME ASSEMBLY AND SERVO PISTON KIT

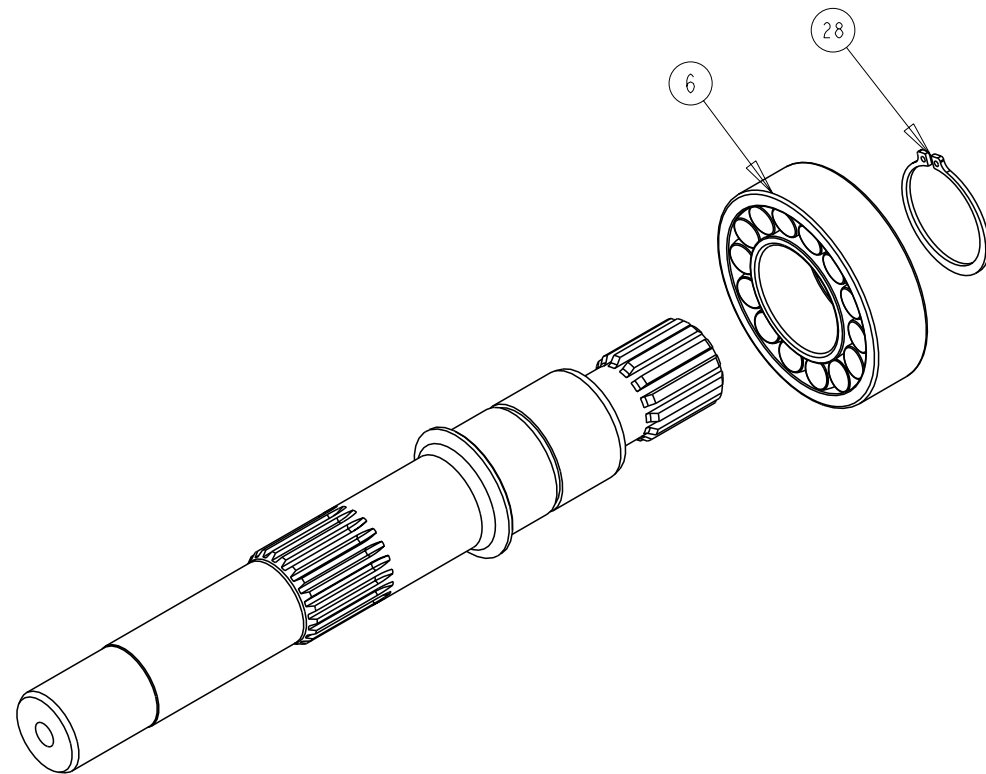


BARREL KIT AND ROTATION GROUP KIT



TITLE	DRAWING NUMBER	REVISION	STATUS	SHEET
SERVICE PARTS P3075 DESIGN SERIES II	P2-075-0404	A	PR	5 OF 7

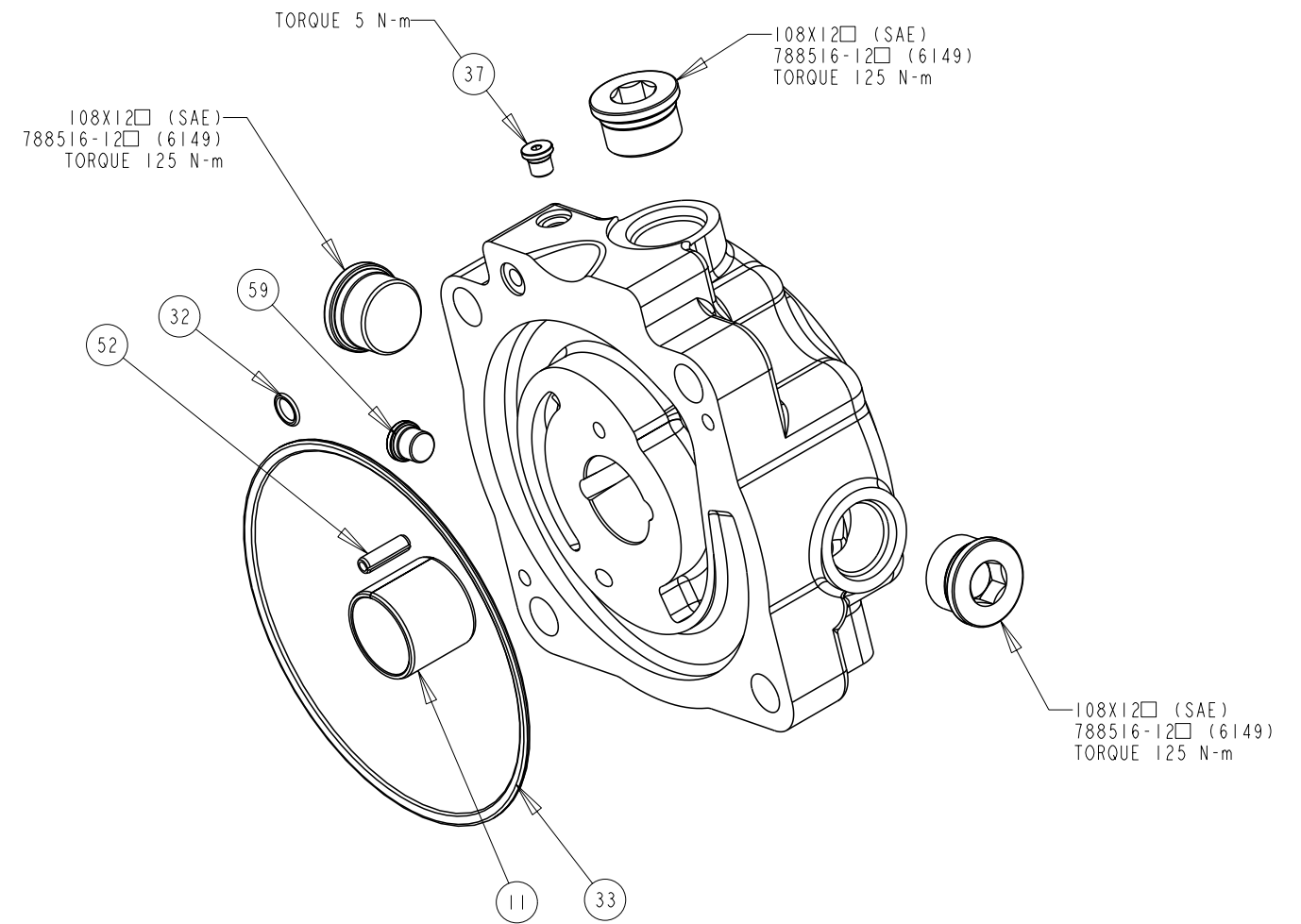
SHAFT ASSEMBLY KITS ITEM 57



SHAFT ONLY	SHAFT ASSY	DESCRIPTION
P2-075-3512	P2-075-0225-35	C SPLINE
P2-075-3525	P2-075-0225-36	C SPLINE THRU
P2-075-3526	P2-075-0225-37	CC SPLINE
P2-075-3527	P2-075-0225-38	CC SPLINE THRU
P2-075-3532	P2-075-0225-45	C KEY
P2-075-3533	P2-075-0225-46	C KEY THRU
P2-075-3534	P2-075-0225-47	CC KEY
P2-075-3535	P2-075-0225-48	CC KEY THRU
P2-075-3542	P2-075-0225-55	C SPLINE NO UNDERCUT
P2-075-3520	P2-075-0225-56	C SPLINE THRU NO UNDERCUT
P2-075-3543	P2-075-0225-57	CC SPLINE NO UNDERCUT
P2-075-3544	P2-075-0225-58	CC SPLINE THRU NO UNDERCUT

DRAWN BY	DATE	CHANGED BY	DATE	ECN NUMBER
E. BOONE	15APR02	B. LARKIN	20MAY02	133522

COVER ASSEMBLY KITS ITEM 55



COVER ONLY	COVER ASSY	DESCRIPTION
P2-075-1015-01	P2-075-0226-09□	SIDE PORTS, CCW, UNC
P2-075-1015-02	P2-075-0226-10□	SIDE PORTS, CCW, UNC, THRU
P2-075-1015-03	P2-075-0226-11□	SIDE PORTS, CCW, METRIC
P2-075-1015-04	P2-075-0226-12□	SIDE PORTS, CCW, METRIC, THRU
P2-075-1016-01	P2-075-0226-13□	SIDE PORTS, CW, UNC
P2-075-1016-02	P2-075-0226-14□	SIDE PORTS, CW, UNC, THRU
P2-075-1016-03	P2-075-0226-15□	SIDE PORTS, CW, METRIC
P2-075-1016-04	P2-075-0226-16□	SIDE PORTS, CW, METRIC, THRU

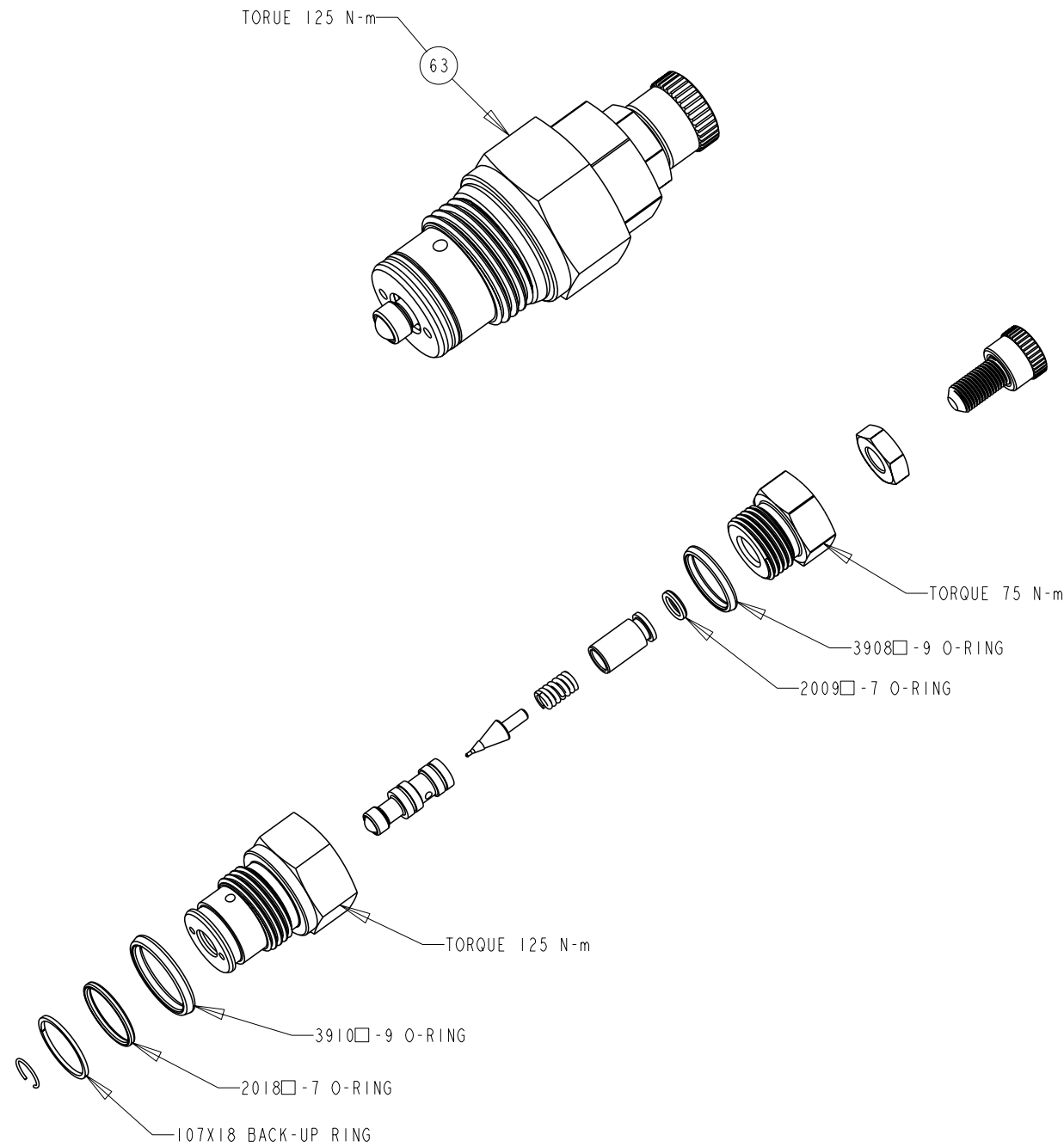
TITLE	SERVICE PARTS P3075 DESIGN SERIES II	DRAWING NUMBER	P2-075-0404	REVISION	A	STATUS	PR	SHEET 6 OF 7
-------	---	----------------	-------------	----------	---	--------	----	--------------

DRAWN BY	E. BOONE	DATE	15APR02	CHANGED BY	B. LARKIN	DATE	20MAY02	ECN NUMBER	133522
----------	----------	------	---------	------------	-----------	------	---------	------------	--------

TORQUE CONTROL CARTRIDGE

P2-000-0803 - ITEM 63

(A)



ASSEMBLY, DIS-ASSEMBLY AND REPAIR NOTES

DISASSEMBLY STEPS FOR ENTIRE PUMP

1. REMOVE COVER SCREWS AND COVER
2. REMOVE ROTATING GROUP
3. REMOVE SHAFT SEAL CARRIER
4. REMOVE SHAFT
5. REMOVE BIAS SPRING PLUG, SPRING AND RETAINER
6. REMOVE MAX. VOLUME ASSY
7. REMOVE SERVO PISTON ASSY.
NOTE NUMBER OF SPACING WASHERS (ITEM #7) BETWEEN SERVO PISTON AND LINK PISTON. RE-ASSEMBLY WITH SAME AMOUNT.
8. REMOVE SWASHPLATE ASSEMBLY

SHAFT SEAL REPLACEMENT

1. REMOVE SEAL CARRIER ONLY
2. REMOVE OLD SEAL
3. INSPECT SHAFT
4. IF SHAFT IS WORN INSTALL NEW SEAL IN INNER LOCATION FOR SINGLE SEAL APPLICATIONS (SEE SHEET 1).
REPLACE SHAFT FOR DUAL SEAL APPLICATIONS

