

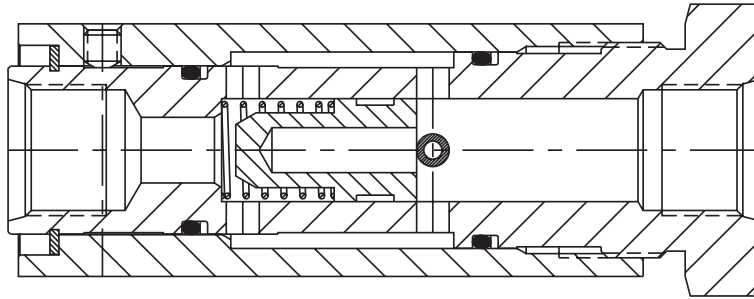
Check Valves

Series AVF	Adjustable Velocity Fuse	B2 - B3
Series 413	Ball, Double Pilot-Operated	B4
Series J416A/MS25493	Mini-Check	B5
Series J417A/MS24423	Mini-Check	B5
Series 419	Shuttle	B6
Series 440 and 450	Hy Pressure	B8 - B9
Series 480 and 490	Soft Seat	B10 - B11
Series 580 and 590	Swing	B12 - B13
Series 428 and 429	10,000 PSI	B14
Series 4121	Pilot-Operated	B15



Catalog Series AVF

B



Features

- Provides automatic line rupture shut-off.
- Isolates problem circuit on parallel circuit applications.
- Limits oil spillage and potential component damage.
- Adjustable closing flow — simple readjustment.

Specifications

Service Application:

Hydraulic

Maximum Working Pressure:

5,000 PSI (340 Bars)

Temperature Range:

-20° to 350°F, -27° to 177°C

Mounting: Any

Materials:

Body, Sleeve, Poppet, Roll Pin Steel
 Spring Stainless Steel
 O-Ring Fluorocarbon
 Back-up Ring PTFE
 Finish Zinc Plated

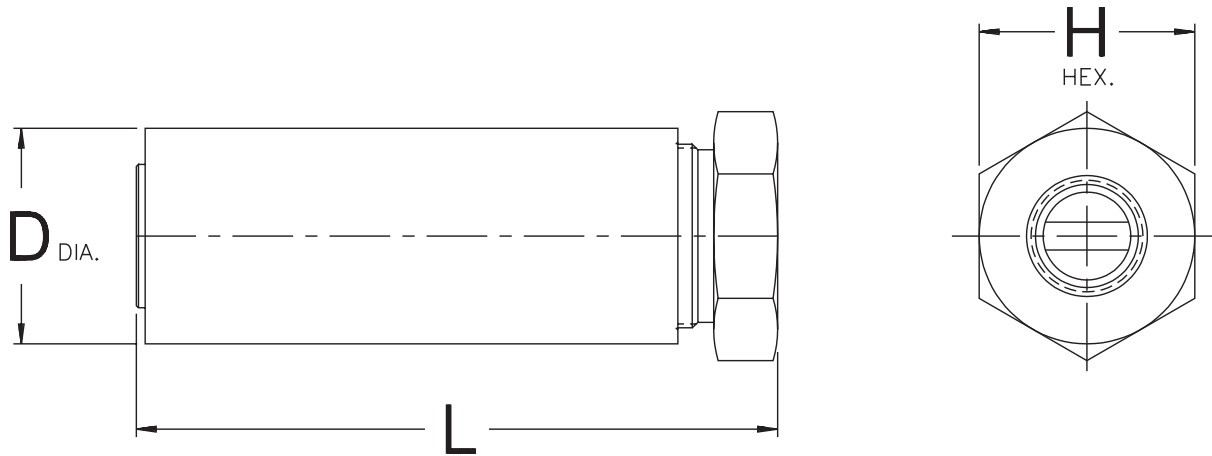
Sizes: Seven (1/4" through 1-1/2")

Performance Data

Valve Size	Closing Flow Adjustment Range	
	Minimum	Maximum
1/4"	1/2 GPM (1.9 L/M)	4 GPM (15 L/M)
3/8"	1 GPM (3.8 L/M)	8GPM (30 L/M)
1/2"	1-1/2 GPM (5.7 L/M)	12 GPM (45 L/M)
3/4"	2 GPM (7.6 L/M)	18 GPM (68 L/M)
1"	3 GPM (11 L/M)	27 GPM (102 L/M)
1-1/4"	4 GPM (15 L/M)	40 GPM (151 L/M)
1-1/2"	6 GPM (23 L/M)	60 GPM (227 L/M)

Pressure drop at maximum rated flow is less than 100 PSID on all sizes.

Dimensions



B

Nominal Size	"L" in - (mm)	"D" in - (mm)	"H" in - (mm)	Weight Lbs - (Kg)
1/4"	3.56" (90)	1.13" (29)	1.13" (29)	0.8 (0.36)
3/8"	4.25" (108)	1.31" (33)	1.31" (33)	1.2 (0.54)
1/2"	5.02" (128)	1.69" (43)	1.69" (43)	2.4 (1.1)
3/4"	5.62" (143)	2.0" (51)	2.0" (51)	3.8 (1.7)
1"	6.62" (168)	2.38" (61)	2.38" (61)	6.1 (2.8)
1-1/4"	7.50" (191)	2.75" (70)	2.75" (70)	8.8 (4.0)
1-1/2"	8.69" (221)	3.0" (76)	3.0" (76)	11.6 (5.3)

Interpretation of Valve Number

Nominal Size	Port Type		
	NPT P/N	SAE P/N	BSPP P/N
1/4"	AVF-1/4-S28	AVF-106-S28	AVF-G1/4-S28
3/8"	AVF-3/8-S28	AVF-108-S28	AVF-G3/8-S28
1/2"	AVF-1/2-S28	AVF-110-S28	AVF-G1/2-S28
3/4"	AVF-3/4-S28	AVF-112-S28	AVF-G3/4-S28
1"	AVF-1-S28	AVF-116-S28	AVF-G1-S28
1-1/4"	AVF-1 1/4-S28	AVF-120-S28	AVF-G1 1/4-S28
1-1/2"	AVF-1 1/2-S28	AVF-124-S28	AVF-G1 1/2-S28