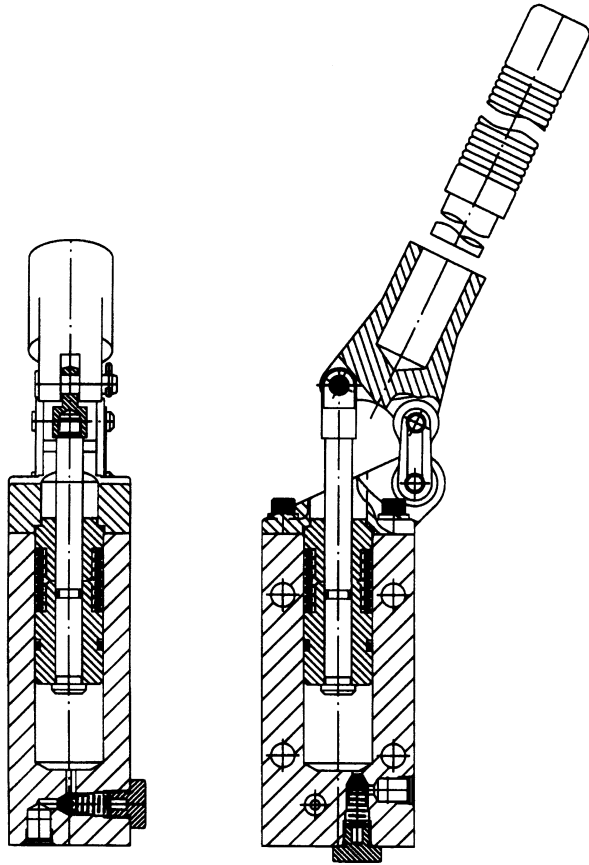


Catalog Series 913

2-Stage 5000 P.S.I.



Features

- Two-stage single-acting hydraulic pump.
- When first stage reaches 10 PSI maximum, pump automatically sequences to a lower volume at pressures up to 5000 PSI.



Specifications

Service Applications:

Hydraulic oil.

Pressure Range:

Working: 0 to 5000 PSI
(5000 PSI based on 50 lb. handle load at 23 in.)

Temperature Range:

-40° to 250° F.

Sizes: IST 4, #4 SAE.

Type Ports:

IST: Internal Straight Threads.
SAE: Straight Threads, AND 10050.

Mounting:

Holes (4) through, .390 in. dia.

Materials:

Body: Aluminum alloy.
Piston, Plunger: Stainless steel type 416.
Springs: Stainless steel.
O-Rings: Synthetic rubber.
Back-up Rings: PTFE.

Type:

Single-acting.

Displacement:

1 cu. in. to 10 PSI; .19 cu. in. to 5000 PSI.

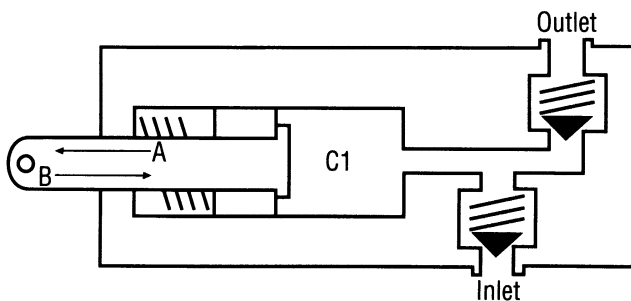
Operating arc: 55°

Handle:

Not furnished. Available on special order.

Weight: 3.5 lbs.

Principle of Operation



Piston Stroke — Direction A

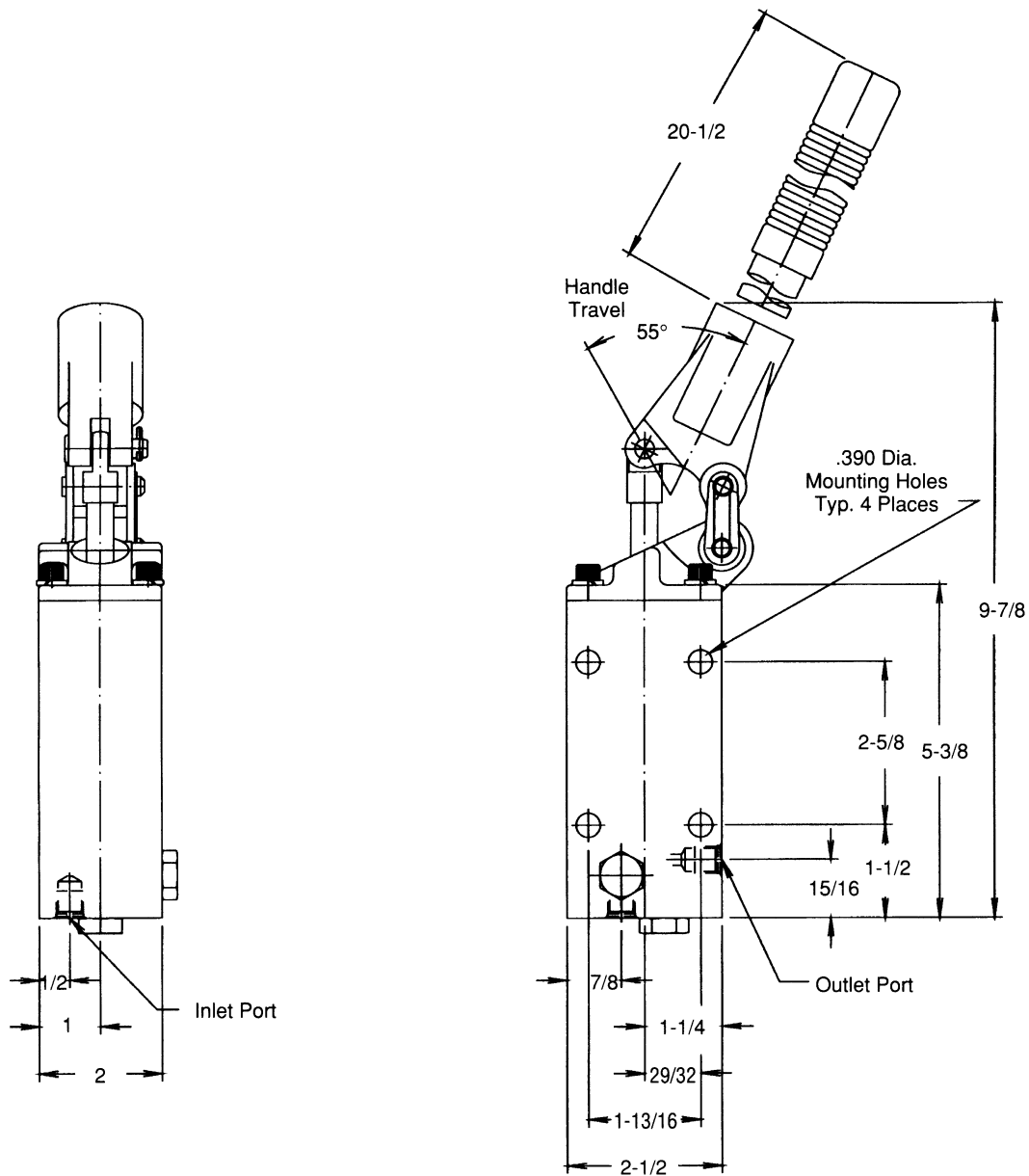
Piston draws in fluid through INLET, charging chamber C1.

Piston Stroke — Direction B

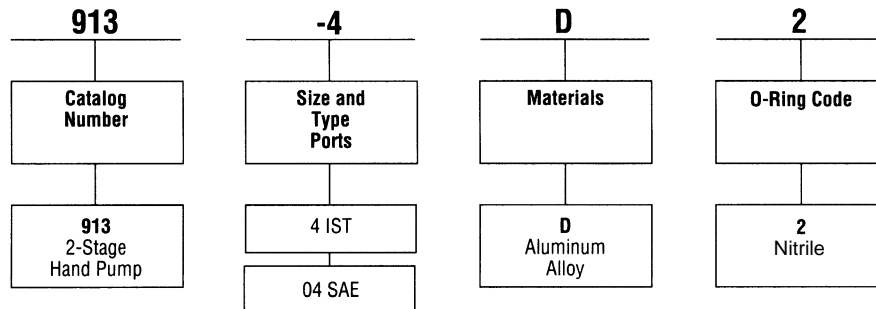
Stage 1 (to 10 PSI): Volume C1 discharged through OUTLET.

Stage 2 (over 20 PSI): Build-up of pressure in system causes piston to remain in retracted position (shown), and plunger moves forward, discharging low volume through OUTLET at high pressure. Piston remains in retracted position on next A stroke.

Dimensions



Interpretation of Valve Number



repcat-h.p65, dd, fn

