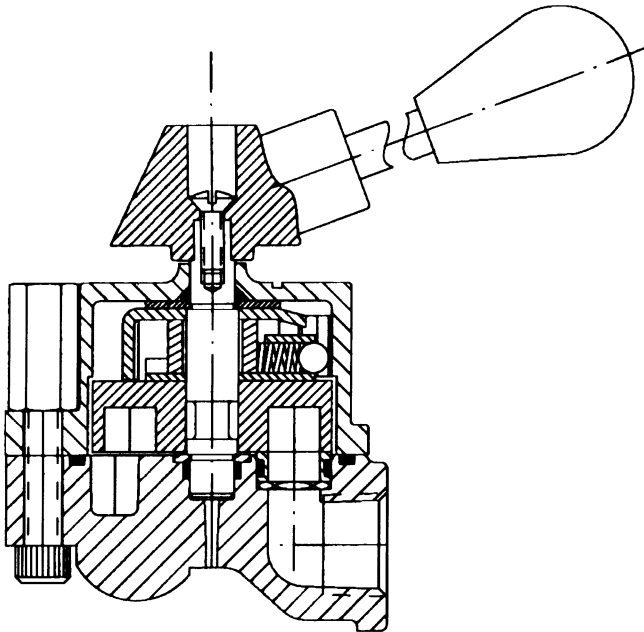


Catalog Series 8700

Specifications



Features

- Shear-type positive seal.
- Zero leakage (1 drop per min. per pressurized port).
- High contamination tolerance.
- Standard valves are interflow; non-interflow valves are available through 1/2" size.
- Long life due to wiping action of seals and disk.
- Low turning torque.
- Panel mounting is standard.

Service Applications:

Lubricated air and hydraulic oil. For case pressure or exhaust port pressure applications, consult factory.

Pressure Range:

Working: 250 PSI, oil 250 PSI, air
Proof: 375 PSI, oil 375 PSI, air
Burst: 625 PSI

Temperature Range:

-40° to +250° F.
 Higher on special order.

Materials:

Body and Cap: Aluminum alloy, anodized.
Disk: 440 stainless steel.
Shaft: 416 stainless steel.
Seals: 440 stainless steel.
Springs seals: Stainless steel.
O-rings: Synthetic rubber compatible with media.
Back-up rings: PTFE.
Handle: Steel, aluminum and plastic.
Finish: Paint.

Porting:

Bottom or side and 2 bottom-2 side.

NPT: Pipe threads.

Sizes: 1/8, 1/4, 3/8 & 1/2.

IST: Internal straight threads, per AND 10050.

Sizes: 4, 6, 8 & 10.

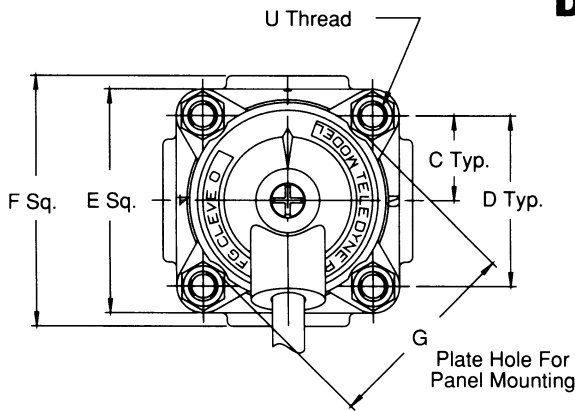
SAE: Straight threads.

Sizes: #4, #6, #8 & #10.

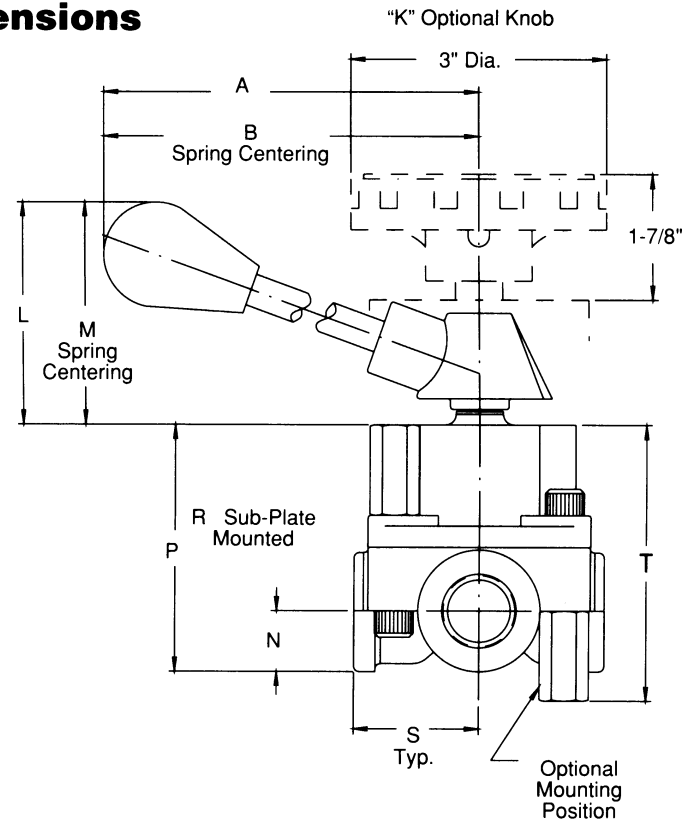
Sub-Plate Mounting:

Size: 10.

Valve Size				Weight Lbs.	CV Factor P. to A. or P. to B.		Flow Passage Diameter		Handle Pull-Lbs.						
Sub-Plate	SAE	Tube	Pipe		8700E	N8700E	8700E	N8700E	8700E		N8700E		R8700E		
										Air	Oil	Air	Oil	Air	Oil
—	# 4	4	1/8	2# Max.	1.5	.39	.438	.156	4 1/2	4 1/2	5 1/2	5 1/2	7	7	
	# 6	6	1/4		1.7	.40									
Size 10	# 8	8	3/8	2# Max.	2.2	1.0	.438	.156	4 1/2	4 1/2	5 1/2	5 1/2	7	7	
	# 10	10	1/2		2.4	1.0									



Dimensions



Valve Size				All Dimensions are in Inches																	Sub-Plate Mounted		
Sub-Plate	SAE	Tube	Pipe	A	B	C	D	E	F	G	H	J	K	L	M	N	P	R	S	T	U	M't'g. Bolt V	Torq.
	# 4	4	1/8	5 1/2	7 3/8	1	2	2 5/8	2 15/16	2 3/8	2 3/4	11/16	1 3/8	3	3 7/8	3/4	2 15/16	2	1 15/32	3 1/4	1 7/8	5/16 - 24UNF-2B	250 In. - Lbs.
	# 6	6	1/4	5 1/2	7 3/8	1	2	2 5/8	2 15/16	2 3/8	2 3/4	11/16	1 3/8	3	3 7/8	3/4	2 15/16	2	1 15/32	3 1/4	1 7/8	5/16 - 24UNF-2B	250 In. - Lbs.
Size 10	# 8	8	3/8	5 1/2	7 3/8	1	2	2 5/8	2 15/16	2 3/8	2 3/4	11/16	1 3/8	3	3 7/8	3/4	2 15/16	2	1 15/32	3 1/4	1 7/8	5/16 - 24UNF-2B	250 In. - Lbs.
	# 10	10	1/2	5 1/2	7 3/8	1	2	2 5/8	2 15/16	2 3/8	2 3/4	11/16	1 3/8	3	3 7/8	3/4	2 15/16	2	1 15/32	3 1/4	1 7/8	5/16 - 24UNF-2B	250 In. - Lbs.

Interpretation of Valve Number

87 5 1 - 1/8 H D 2

Prefix for Special Feature	250 PSI Series	Flow Pattern	Type of Porting	Size	Service Media	Materials	O-Ring Code	Suffix Options
See Option Page for Complete List	0 4-Way All Ports Open Center		1 Side Ported	104 SAE #4	1/8 NPT	A Lubricated Air	D Aluminum Alloy	2 Nitrile 28 Fluorocarbon 52 EPR Others Available Per. Request
	1 2-Way Shut-Off			106 SAE #6	1/4 NPT			
	4 4-Way Closed Center			108 SAE #8	3/8 NPT	10 Sub-Plate		
	5 4-Way Tandem Center			110 SAE #10	1/2 NPT			
	7 4-Way Manipulator Closed Center				4 IST			
	8 4-Way Manipulator Open Center				6 IST			
				8 IST				
				10 IST				

Non-Interflow available only for flow patterns #4 and #5 and sizes up through 1/2 or 10 only.