

Catalog Series 832P, 833P Features

- Light weight aluminum construction.
- One size will operate most Lo-Torq valve styles.
- Heavy duty rack & pinion operation.

Specifications

Operating Torque:

500 inch pounds minimum at 100 PSI.

Pressure Range:

Maximum operating pressure 125 PSI.

Position Repeatability: $\pm 2^\circ$

Cycle Life:

100,000 cycles before service.

Two Position:

0° to 90°.

Operating Media: Air or oil.

Actuator Material:

Aluminum and steel construction with Nitrile seals.

Port Connections: 1/4 IPT.

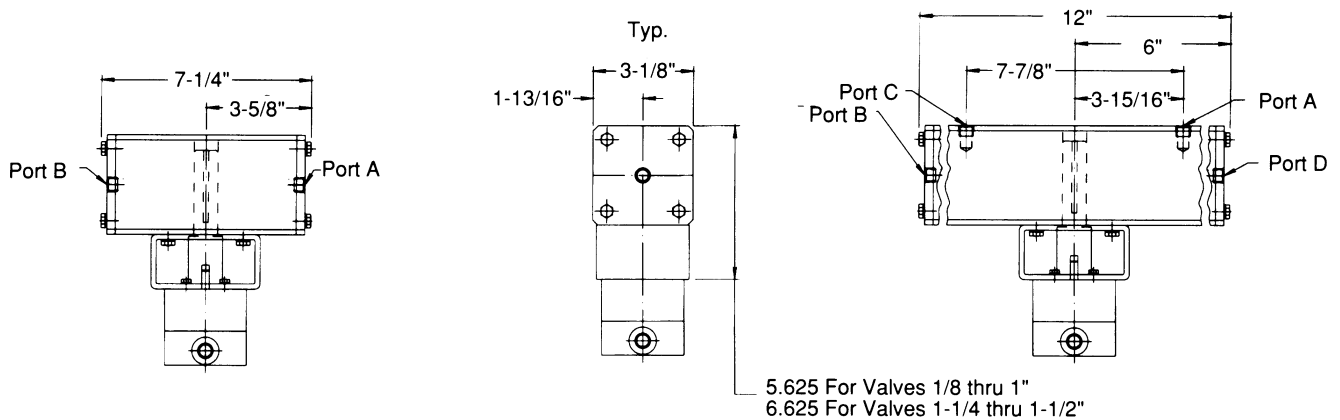
Temperature Range:

-40° to 180°F. standard.

Weight:

Actuator only 10.5 lbs.

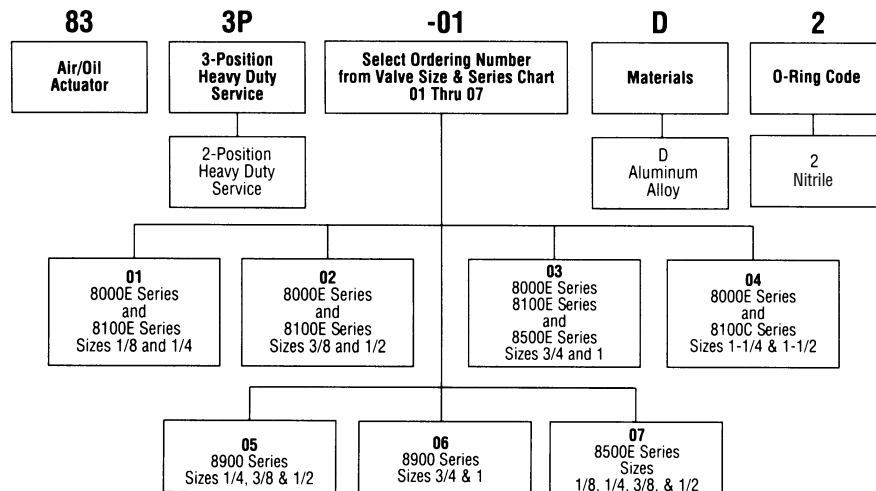
D



2-Position Actuator Operation 0° to 90°
Full Clockwise Rotation: Apply pressure at Port A.
Full Counterclockwise Rotation: Apply pressure at Port B.

3-Position Actuator Operation 0° and 45° to 90°
Full Clockwise Rotation: Apply pressure at Port A & D.
Full Counterclockwise Rotation: Apply pressure at Port B & C.
Center Position: Pressurize Ports A, B, C, D.

Interpretation of Part Number



Notes:

1. Select part number per above chart, for required actuator and mounting hardware.
2. Consult factory for special 2-position actuators with 45° rotation, all 2-way (flow pattern #1) Lo-Torq valves, except the 8900 Series, have 45° rotation.
3. 2-position actuator less mounting hardware, order P/N 6-2684-3.
4. 3-position actuator less mounting hardware, order P/N 12-976-3.