

# Catalog Series 8000C & 8100C

## Specifications

### Service Applications:

Lubricated air, hydraulic oil, and water. For case pressure or exhaust port pressure applications above 250 PSI, consult factory.

### Pressure Range:

<b>Working:</b>	(8000C)	3,000 PSI, liquids,	2,000 air
	(8100C)	6,000 PSI, liquids,	4,000 air
<b>Proof:</b>	(8000C)	4,500 PSI, liquids,	3,000 air
	(8100C)	9,000 PSI, liquids,	6,000 air
<b>Burst:</b>	(8000C)	7,500 PSI, liquids,	5,000 air
	(8100C)	15,000 PSI, liquids,	10,000 air

### Temperature Range:

-40° to +250° F.  
Higher on special order.

### Materials:

- Body and Cap:** Steel or ductile iron.
- Disk:** 440 stainless steel.
- Shaft:** 303 stainless steel.
- Seals:** 440 stainless steel.
- Springs seals:** Stainless steel.
- O-rings:** Synthetic rubber compatible with media.
- Back-up rings:** PTFE.
- Handle:** Aluminum alloy.
- Finish:** Paint.

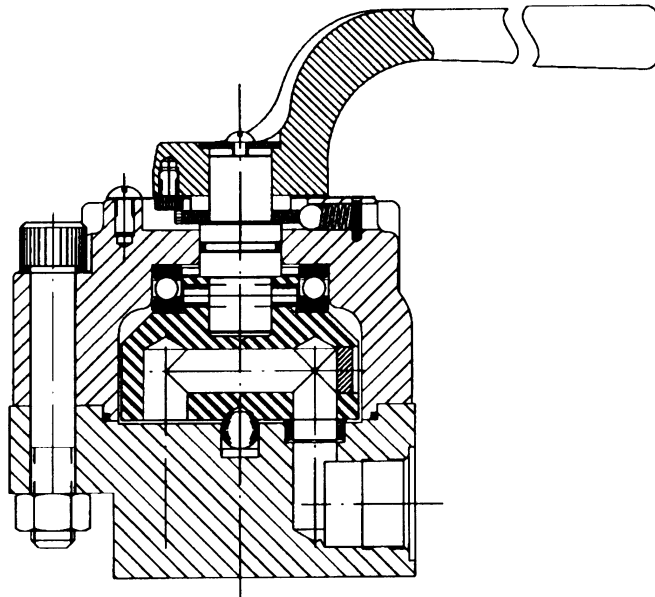
**Note:** Steel bodies and caps for water or air service are bronze plated.  
Water service valves are equipped with grease fittings and require periodic lubrication with a waterproof grease.

### Porting:

- Porting:** Bottom or side.
- NPT:** Pipe threads.
- Sizes:** 1-1/4 and 1-1/2.
- IST:** Internal straight threads, per AND 10050.
- Sizes:** 20 and 24.
- SAE:** Straight threads.
- Sizes:** #20 and #24.

### Sub-Plate Mounting:

Size 24.

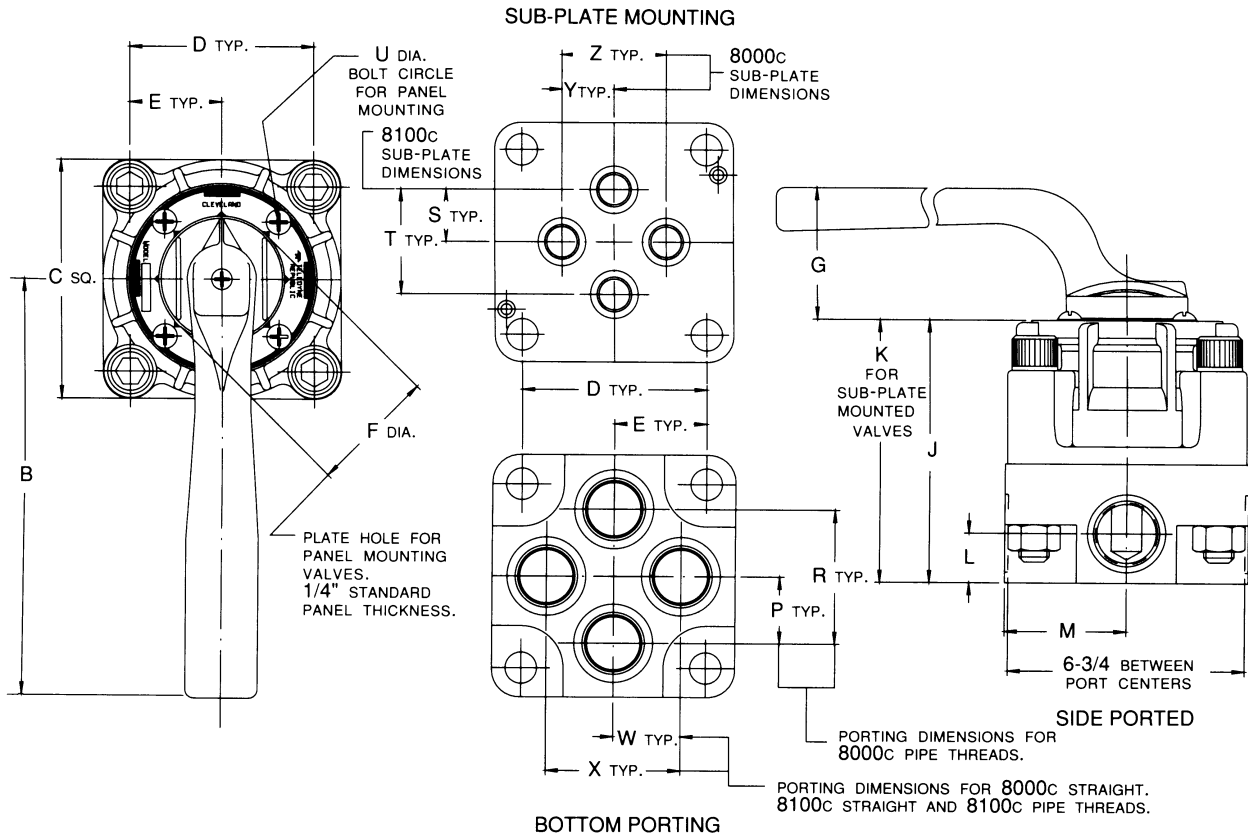


## Features

- Shear-type positive seal.
- Zero leakage (1 drop per min. per pressurized port).
- High contamination tolerance.
- Standard valves are interflow.
- Long life due to wiping action of seals and disk.
- Low turning torque.
- Panel mounting is standard.

Valve Size				Weight Lbs.	CV Factor P. to A. or P. to B.		Flow Passage Diameter		Handle Pull-Lbs.			
Sub-Plate	SAE	Tube	Pipe		8000C	8100C	8000C	8100C	8000C		8100C	
	# 20	20	1-1/4	75	24	13	1.250 In.	.875 In.	Air	Oil	Air	Oil
Size 24	# 24	24	1-1/2	75	24	13	1.250 In.	.875 In.	31	31	33	33

### Dimensions



Valve Size				All Dimensions are in Inches																		Sub-Plate Mounted		
Sub-Plate	SAE	Tube	Pipe	B	C	D	E	F	G	J	K	L	M	P	R	S	T	U	W	X	Y	Z	M't'g. Bolt	Torq.
Size 24	# 20	20	1-1/4	12	7	5 5/16	2 21/32	3 5/8	3 3/4	7 5/8	5 5/8	1 7/16	3 1/2	1 15/16	3 7/8	1 1/2	3	4 5/8	2 1/8	4 1/4	1 15/16	3 7/8	7/8 - 9CN2 x 5 1/2 Lg.	5400 In. - Lbs.
	# 24	24	1-1/2																					

### Interpretation of Valve Number

