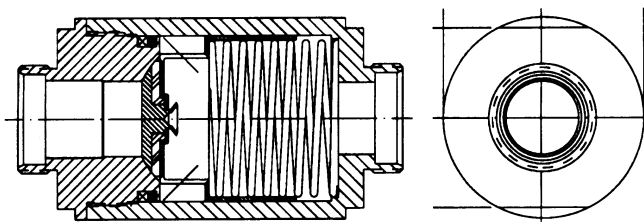
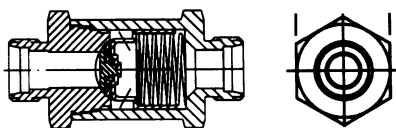


Catalog Series 480, 490

Specifications

B



Features

- Resilient molded seal is permanently locked to poppet which insures zero leakage in high velocity applications.

Service Applications: Pneumatic or hydraulic.

Pressure Range:

- Cracking:** 2 PSI ±1
Other settings available.
- Working:** 3,000 PSI
- Proof:** 4,500 PSI
- Burst:** 7,500 PSI

Temperature Range:

- 65° to 200° F.
- Higher temperature limits available.

Sizes:

- IPT, EPT:** 1/8, 1/4, 3/8, 1/2, 3/4, 1, 1-1/4, 1-1/2, 2.
- IST, FLD, FLS:** 4, 6, 8, 10, 12, 16, 20, 24, 32.

Type Ports:

- NPT:** Pipe threads.
- IST:** Internal straight threads (tube connection)
O-ring seal.
- FLD:** Flared tube connection SAE 37° MS33656 (AND 10056).
- FLS:** Flareless tube connection MS33514.

Internal Leakage: Zero.

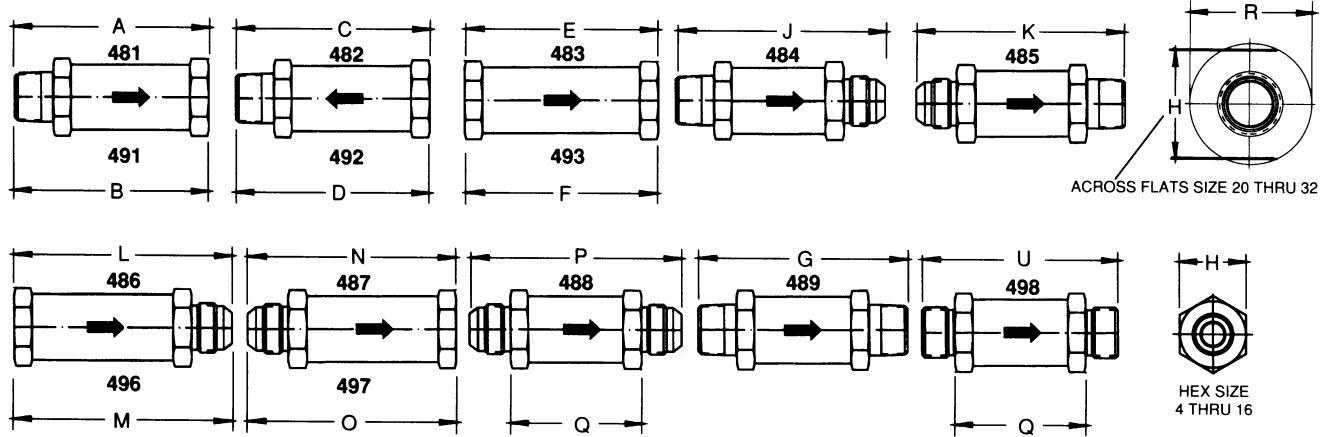
Mounting: Inline.

Materials:

- Body and Cap:** Brass, aluminum alloy or 303 stainless steel.
- Poppet Body:** 305 stainless steel.
- Poppet Nose:** 305 stainless steel.
- Spring:** AMS5688 stainless steel.
- O-Ring:** Synthetic rubber.
- Molded Seal:** Synthetic rubber.
- Back-Up Ring:** PTFE.

Valve Size		Weights (Lbs. Approx.)			CV Factors
		Brass	Aluminum Alloy	Stainless Steel	Coefficient of Flow
Tube	Pipe				
4	1/8	.12	.06	.12	.75
6	1/4	.37	.12	.37	1.5
8	3/8	.62	.25	.62	4
10	1/2	1.25	.5	1.25	6
12	3/4	1.62	.75	1.62	7.5
16	1	2.5	1.0	2.5	13
20	1-1/4	8.0	2.62	6.25	21
24	1-1/2	12.37	4.25	10.37	30
32	2	18.25	8.5	16.0	55

Dimensions



Valve Size		All Dimensions in Inches																	
Tube	Pipe	A	C	E	J	K	L	N	P	G	B	D	F	M	O	U	Q	Flats H	Round R
4	1/8	2 1/8	1 29/32	1 11/16	2 1/2	2 15/32	2 1/16	2 1/4	2 5/8	2 11/32	2 5/16	2 7/16	2 13/32	2 19/32	2 7/16	2 7/16	1 17/32	3/4	—
6	1/4	2 29/32	2 7/16	2 1/4	3 1/16	3	2 13/32	2 13/16	2 31/32	3 3/32	3	2 17/32	2 7/16	2 1/2	2 27/32	2 51/64	1 55/64	1	—
8	3/8	3 5/64	2 45/64	2 7/16	3 27/64	3 21/64	2 25/32	3 1/16	3 13/32	3 11/32	3 19/64	3 19/64	3 3/8	3 3/8	3 9/32	3 7/32	2 3/32	1 1/4	—
10	1/2	3 25/32	3 9/32	2 15/16	4 1/16	4 1/32	3 7/32	3 11/16	3 31/32	4 1/8	3 25/32	3 13/32	3 1/16	3 11/32	3 23/32	3 45/64	2 29/64	1 1/2	—
12	3/4	4 11/64	3 43/64	3 3/8	4 27/64	4 31/64	3 5/8	4 3/16	4 7/16	4 15/32	4 23/64	3 63/64	3 7/8	3 15/16	4 3/8	4 5/64	2 45/64	1 3/4	—
16	1	4 47/64	4 3/8	3 25/32	5 7/64	5 5/32	4 5/32	4 9/16	4 15/16	5 21/64	4 57/64	4 3/8	3 15/16	4 5/32	4 3/4	4 31/64	3 7/64	2	—
20	1 1/4	6 3/4	5 3/4	5 17/32	6 3/4	6 11/16	5 17/32	6 15/32	6 15/32	6 31/32	6 3/4	5 3/4	5 17/32	5 17/32	6 15/32	5 59/64	4 35/64	2 1/4	2 3/4
24	1 1/2	7 3/8	6 1/2	6 1/8	7 21/32	7 19/32	6 13/32	7 7/32	7 1/2	7 3/4	7 3/8	6 5/8	6 1/4	6 17/32	7 7/32	6 45/64	5 21/64	3 1/8	3 1/2
32	2	8 13/32	7 9/32	7 1/16	8 5/8	8 5/8	7 9/32	8 25/64	8 39/64	8 5/8	8 13/32	7 17/32	7 5/16	7 7/32	8 25/64	7 17/64	5 57/64	4	4 1/2

Interpretation of Valve Number

