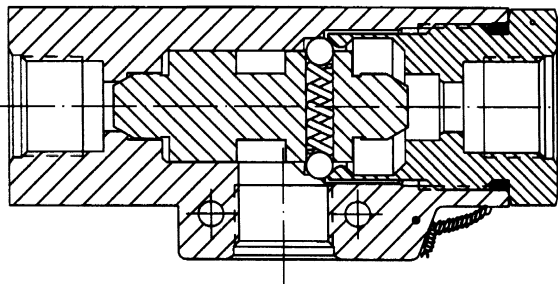


# Catalog Series 419

# Specifications

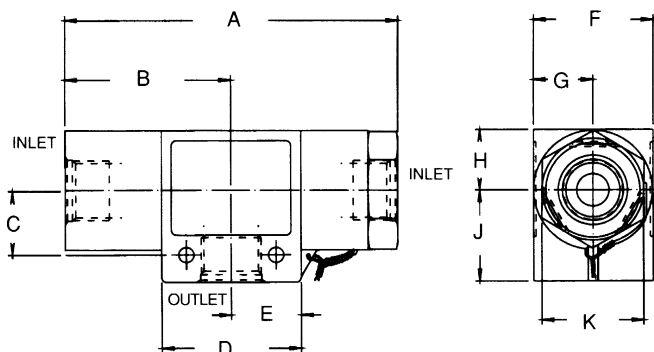
**B**



## Features

- Conforms to military specifications: MS28767 (Type II systems)
- Shuttle detented to prevent blocking of outlet port.

## Dimensions



Valve Size	A ± .031	B	C	D	E	F +0,-1/32	G Min.	H	J	K Hex.	Flow GPM	Weight Ozs.	CV Factor
4	3.750	1-7/8	3/4	.875	7/16	1	.492	1/2	1	15/16	1.2	7	.32
6	3.875	1-15/16	3/4	1.125	9/16	1-1/4	.617	5/8	1	1-1/8	3.5	9-1/2	1.0
8	4.188	2-3/32	13/16	1.125	9/16	1-1/2	.742	3/4	1-5/32	1-3/8	6	12	1.7

**Service Applications:** Hydraulic.

### Pressure Range:

- Working: 3,000 PSI
- Proof: 4,500 PSI
- Burst: 7,500 PSI
- Shuttles at 40 PSI ±10 differential pressure.

### Temperature Range:

-65° to 275° F. (for Type II systems).

### Sizes:

IST: 4, 6, 8.

### Type Ports:

IST: Internal straight threads (tube connection)  
AND 10050 O-ring seal.

### Interflow:

Between source ports during shuttle movement: 3 cc maximum.

### Internal Leakage:

From closed port: 1 drop per minute maximum.

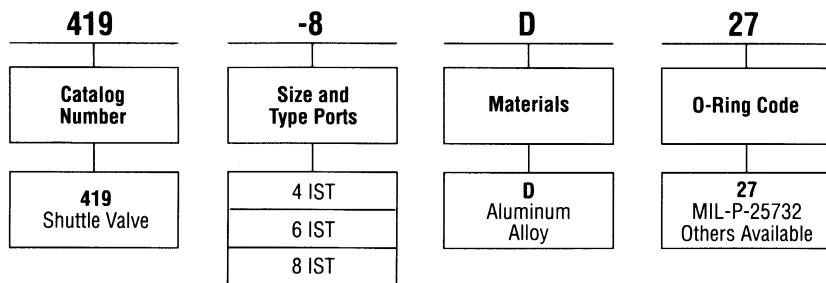
### Mounting:

Two 3/16" diameter holes through.

### Materials:

- Body: Forged aluminum alloy, anodized.
- Cap: Aluminum alloy, anodized.
- Shuttle: 303 stainless steel.
- Spring: AMS5688 stainless steel.
- Balls: 440 stainless steel.
- O-Ring: Synthetic rubber.
- Lockwire: Stainless steel.
- Back-Up Ring: PTFE.

## Interpretation of Valve Number



## MS Equivalent

MS Equivalent			
Size	Type Ports	Part Number	Military Number
4	IST	419 - 4D27	MS 28767-4
6	IST	419 - 6D27	MS 28767-6
8	IST	419 - 8D27	MS 28767-8