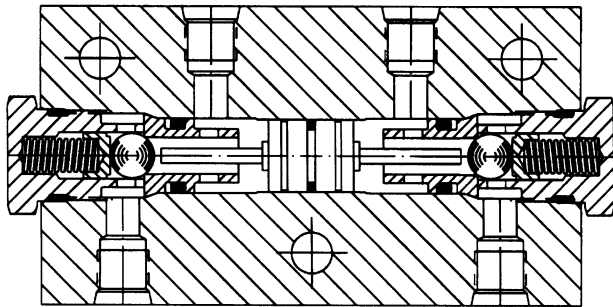


# Catalog Series 413

# Specifications

**B**



### Service Applications:

Hydraulic oil.

### Pressure Range:

Working: 3,000 PSI  
 Proof: 4,500 PSI  
 Burst: 7,500 PSI  
 Cracking: 6 PSI ±2  
 Pilot-poppet force ratio: 4 to 1

### Temperature Range:

-40° to 180° F.

**Internal Leakage:** 1 drop per minute (maximum).

**Mounting:** 3 holes 11/32" diameter through.

### Materials:

Body: 2024-T4 aluminum alloy.  
 Cap: 2024-T351 aluminum alloy.  
 Piston: 303 stainless steel.  
 Seat: 440FSS stainless steel.  
 Pins: 416 stainless steel.  
 Springs: AMS5688 stainless steel.  
 Ball: 440CSS stainless steel.  
 Back-up rings: PTFE.  
 O-Rings: Synthetic rubber.

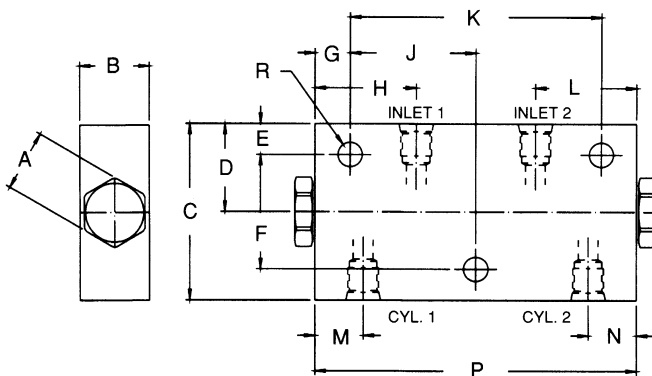
### Type Ports:

NPT: Pipe threads.

## Features

- Double cylinder locking valve.
- Prevents movement in either direction of any double acting hydraulic cylinder or motor.

## Dimensions



Valve Size	All Dimensions are in Inches															Weight	CV Factor
Pipe	A	B	C	D	E	F	G	H	J	K	L	M	N	P	R Dia. 3 Plcs.		
3/8	7/8	1	2 1/2	1 1/4	7/16	1 5/8	1/2	1 7/16	1 25/32	3 9/16	1 7/16	11/16	11/16	4 9/16	11/32 Thru	19 Ozs.	.95

## Interpretation of Valve Number

