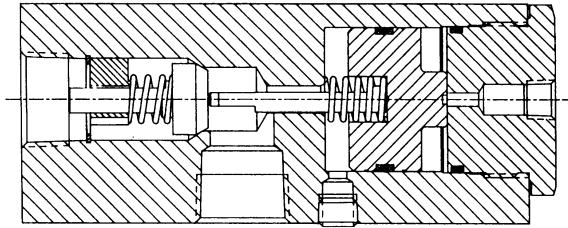


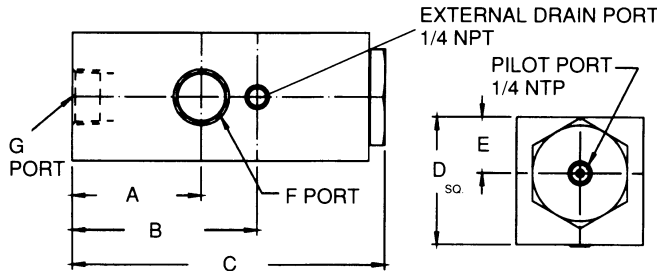
Catalog Series 4121



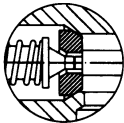
Features

- Rugged steel pilot-operated check valve.
- Ideal for all industrial uses.
- 5:1 pilot ratio or 40:1 decompression pilot ratio available.

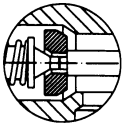
Dimensions



TWO STAGE POPPET



40:1 PILOT RATIO



DECOMPRESSED
5:1 PILOT RATIO

THIS POPPET DESIGN IS USED ON THE 40:1 POPPET RATIO VALVES ONLY

Valve Size	A	B	C	D	E	F Port	G Port	Approx. Weight	CV Factor
1/2	2.312	3.437	5.687	2.000	1.000	1/2 NPT	1/2 NPT	6 Lbs. 2 Oz.	3.40
3/4	2.687	3.875	6.500	2.375	1.187	3/4 NPT	3/4 NPT	11 Lbs. 1 Oz.	5.30
1	3.062	4.375	7.375	3.000	1.312	1 NPT	1 NPT	18 Lbs. 1 Oz.	8.10

*Optional drain port location is 180° from location shown (side opposite inlet port).

Specifications

Service Applications: Hydraulic oil.

Pressure Range:

High (H)
Working: 6,000 PSI
Proof: 9,000 PSI
Burst: 15,000 PSI
Cracking:

Temperature Range:

-65° to 250° F.
 Higher on special order.

Internal leakage: 1 drop per min. maximum.

Materials:

Body and Cap: Steel.
Poppet: 440 stainless steel.
Spring: AMS5688 stainless steel.
Piston and Push rod: Stainless steel.
Back-up rings: PTFE.
O-Rings: Synthetic rubber.
Finish: Paint.

Type Ports:

NPT: Pipe threads.

Interpretation of Valve Number

X	H	412	1	-1/4	S	2	-6	-5
Options	Pressure Range	Catalog Number	Port Position	Size and Type Ports	Materials	O-Ring Code	Cracking Pressure	Poppet Ratio
X External Drain for Pilot Section	H High to 6000 P.S.I.	412 Single Pilot Operated Check	1 In-Line	1/2 NPT 3/4 NPT 1 NPT	S Steel	2 Nitrile Others Available	6 6 PSI ± 2	5 5:1 40 40:1

NOTE: Valves with external drain option require a special actuating push rod with an O-ring seal.