

Catalog Series
23100 – 25 GPM
23200 – 45 GPM
23300 – 75 GPM

Features

- Shear-type positive seal.
- Ideal for water soluble systems (95-5).
- Pressures up to 6000 PSI.
- Zero leakage (1 drop per min. per pressurized port).
- Mounts in any position.
- No packing to wear or cut.
- Standard valves are interflow.
- High tolerance to contamination.
- High tolerance to silting.
- Long life, easy maintenance.

Specifications

Service Applications:

Hydraulic oil. Water containing minimum of 5% soluble oil. Others available on special order.

Pressure Range:

*Pilot (air or liquid): 150 to 6000 PSI
 Working: To 6000 PSI
 †Proof: 9000 PSI
 †Burst: 15,000 PSI

†Applicable to pressure and cylinder ports only.
 * Pilot pressure must exceed exhaust port pressure by at least 150 PSI.

Note: Installation of this valve should ensure that exhaust port pressure does not exceed cylinder port pressures by more than 50 PSI.

For spring centered valves, exhaust port pressure not to exceed 50 PSI.

Temperature Range:

-40° to 250° F. (with Code 02 O-rings)

External Leakage: Zero.

Internal Leakage: 1 DPM maximum per port.

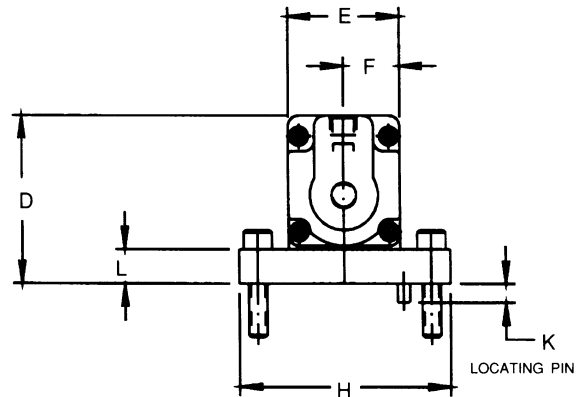
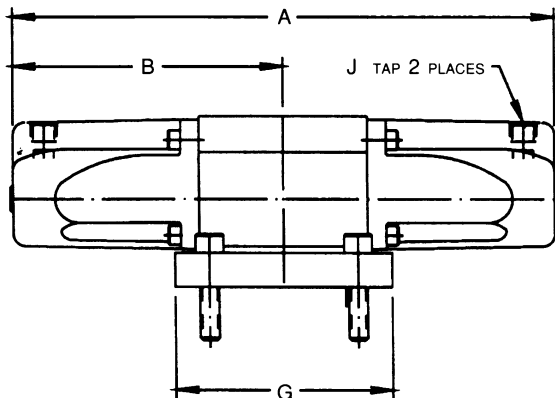
Mounting: Sub-plate. Mounting bolts furnished.

Materials:

Body, Pistons, Spring Retainer, Pipe Plugs: Steel.
End Caps: Ductile iron.
Slide, Seals, Springs, Spring Washers: Stainless steel.
O-Rings: Synthetic rubber.
Back-up Rings: PTFE.

Valve Number	Weight	CV Factor	Rated Flow	4 Flow Holes	Pilot Pistons 1/2 Stroke	Displacement Full Stroke	Pilot Port Sizes
23100	14 Lbs.	2.5	25 GPM	7/16 Dia.	.9 Cu. In.	1.8 Cu. In.	1/4 NPT
23200	23 Lbs.	4.3	45 GPM	9/16 Dia.	2.2 Cu. In.	4.4 Cu. In.	1/4 NPT
23300	54 Lbs.	7.4	75 GPM	3/4 Dia.	5.2 Cu. In.	10.4 Cu. In.	3/8 NPT

Dimensions



Valve Series	All Dimensions are in Inches											Mounting Torque Required
	A	B	C	D	E	F	G	H	J	K	L	
23100	10 ³¹ / ₃₂	5 ³¹ / ₆₄	⁵ / ₈	3 ²⁷ / ₆₄	2 ¹ / ₄	1 ¹ / ₈	4 ³ / ₈	4 ¹ / ₄	¹ / ₄ NPT	¹ / ₄ Dia. x ³ / ₈ Proj.	¹¹ / ₁₆	700 In. Lbs.
23200	13 ¹ / ₂	6 ³ / ₄	⁷ / ₈	3 ³ / ₄	2 ³ / ₄	1 ³ / ₈						
23300	16 ¹ / ₄	8 ¹ / ₈	1	4 ²³ / ₃₂	4 ¹ / ₄	2 ¹ / ₈	5 ¹ / ₂	6 ¹ / ₄	³ / ₈ NPT	³ / ₈ Dia. x ¹ / ₂ Proj.	1 ¹ / ₈	1100 In. Lbs.



Interpretation of Valve Number

