

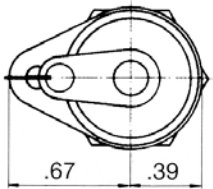
## Test Points

Part Number: MM1240  
# 4 SAE TEST POINT

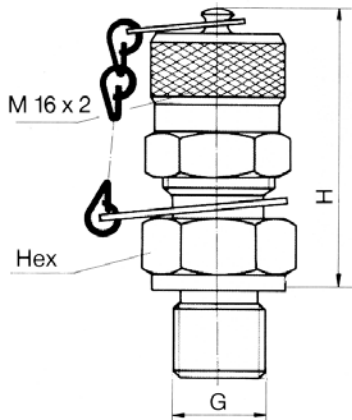
Part Number: MM1103  
# 6 SAE TEST POINT

2

TAPPING PLATES



Dimensions in inches



Thread G	H	Hex	Part Numbers
7/16 UNF	1.5	0.67	MM1240
9/16 UNF	1.57	0.75	MM1103

WE RESERVE THE RIGHT TO DISCONTINUE MODELS, OR CHANGE SPECIFICATIONS WITHOUT NOTICE OR INCURRING OBLIGATION

Lynch Products Can Be Modified to Suit Your Application