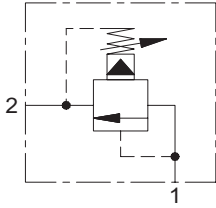


Lynch MANIFOLDS & VALVE PACKS

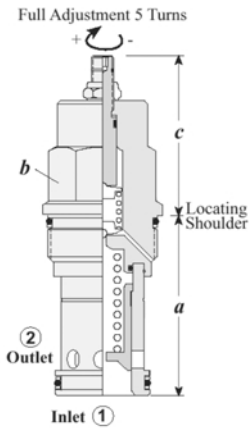
Relief Valves

Pilot Operated



Capacity	Typical Cartridge Model Code	Cavity	Cartridge Dimensions					Installation Torque (lb.ft.)
			a	b	c			
					L	C	K	
12 GPM	RPCC - LAN	T - 162 A	1.22	3/4"	2.11	2.17	2.31	25 to 30
25 GPM	RPEC - LAN	T - 10A	1.56	7/8"	2.00	2.06	2.25	30 to 35
50 GPM	RPGC - LAN	T - 3A	1.88	1 1/8"	2.12	2.18	2.38	45 to 50
100 GPM	RPIC - LAN	T - 16A	2.44	1 1/4"	2.44	2.47	2.69	150 to 160
200 GPM	RPKC - LAN	T - 18A	3.13	1 5/8"	2.81	2.94	3.06	350 to 375

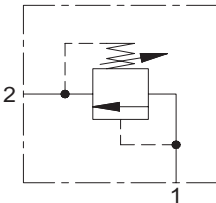
ORDERING INFORMATION



RP		*	C	-	*	*	*	Seal	
Nominal Capacity		Control		Adjustment Range					
C	12 GPM*	L	Standard Screw (as shown)	A	100 - 3000 psi	N	Buna -N		
E	25 GPM	C	Tamper Resistant	B	50 - 1500 psi	V	Viton		
G	50 GPM	 K Handknob		C	150 - 6000 psi				
I	100 GPM			N	60 - 800 psi				
K	200 GPM			Q	60 - 400 psi				
				W	150 - 4500 psi				

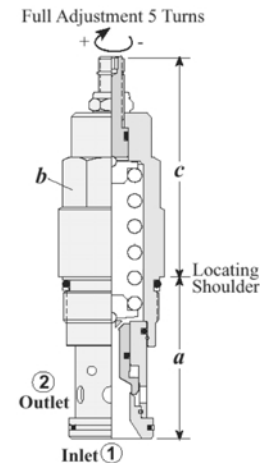
Adjustment Range Options:
 A, B, C and W are standard set at 1000 psi
 N Option is standard set at 400 psi
 Q Option is standard set at 200 psi
 * Minimum setting 75 psi on all ranges
 Customer may specify pressure setting

Direct Acting



Capacity	Typical Cartridge Model Code	Cavity	Cartridge Dimensions				Installation Torque (lb.ft.)
			a	b	c		
					L	C	
12 GPM	RDBA - LAN	T - 162 A	1.22	3/4"	2.11	2.17	25 to 30
25 GPM	RDDA - LAN	T - 10A	1.56	7/8"	2.38	2.44	30 to 35
50 GPM	RDFA - LAN	T - 3A	1.88	1 1/8"	2.50	2.56	45 to 50
100 GPM	RDHA - LAN	T - 16A	2.44	1 1/4"	3.25	3.31	150 to 160
200 GPM	RDJA - LAN	T - 18A	3.13	1 5/8"	3.94	4.07	350 to 375

ORDERING INFORMATION



RD		*	A	-	*	*	*	Seal	
Nominal Capacity		Control		Adjustment Range					
B	12 GPM	L	Standard Screw (as shown)	A	500 - 3000 psi	N	Buna -N		
D	25 GPM	C	Tamper Resistant	B	300 - 1500 psi	V	Viton		
F	50 GPM	 K Handknob		C	1000 - 6000 psi				
H	100 GPM			D	200 - 800 psi				
J	200 GPM			E	100 - 400 psi				
				S	50 - 200 psi				
				W	1000 - 4500 psi				

Adjustment Range Options:
 A, B, C and W are standard set at 1000 psi
 D Option is standard set at 400 psi
 E Option is standard set at 200 psi
 S Option is standard set at 100 psi
 Customer may specify pressure setting

WE RESERVE THE RIGHT TO DISCONTINUE MODELS, OR CHANGE SPECIFICATIONS WITHOUT NOTICE OR INCURRING OBLIGATION

Lynch Products Can Be Modified to Suit Your Application



5 SUBPLATES W/ CIRCUITS