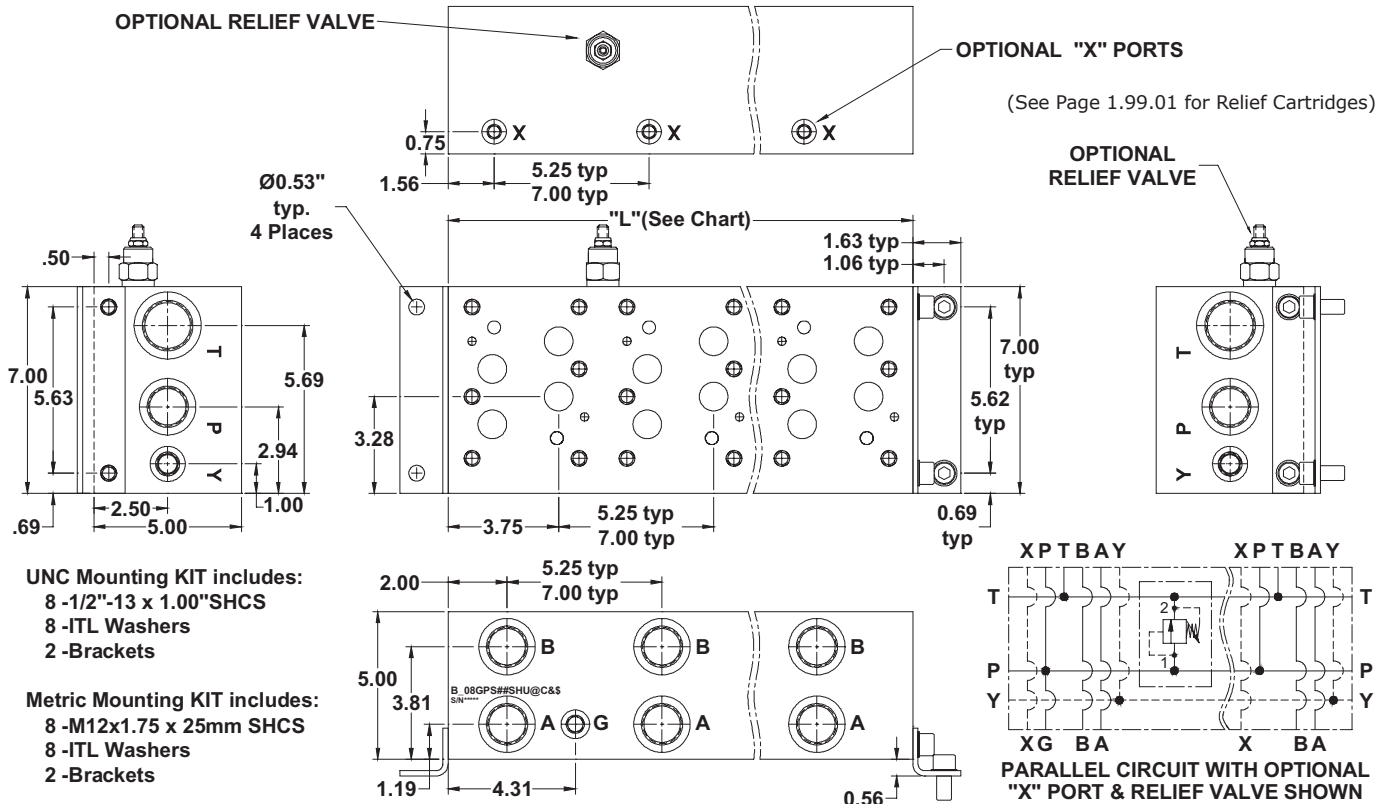


Lynch MANIFOLDS & VALVE PACKS

D08 Standard Flow Parallel Circuit Manifold

1

BAR MANIFOLDS



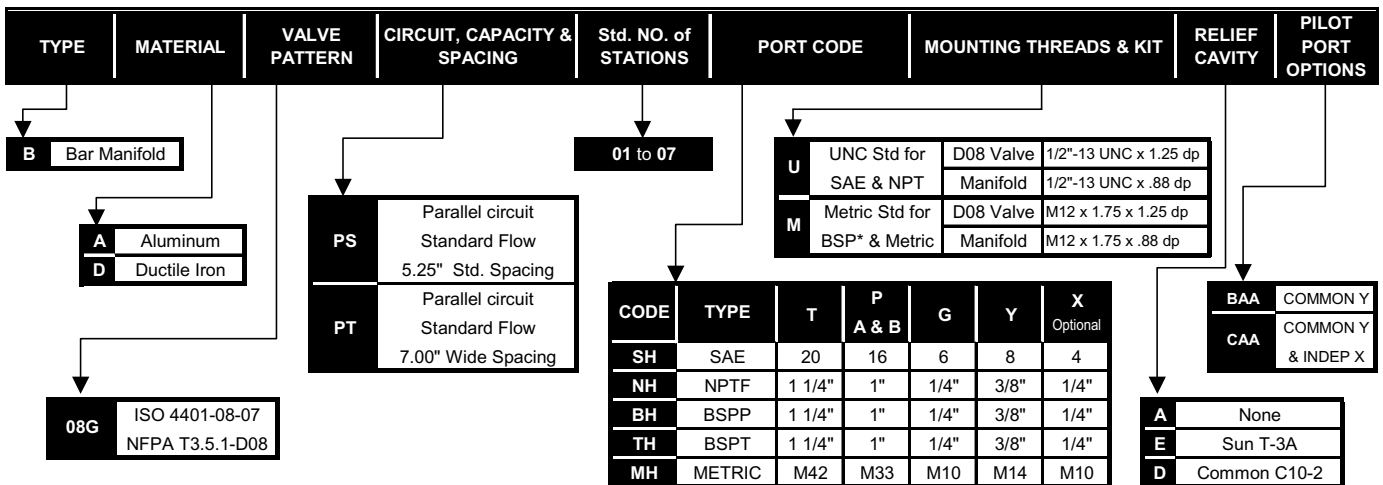
No. of Stations	1	2	3	4	5	6	7
Dim. "L", 5.25" spacing	5.25	10.50	15.75	21.00	26.25	31.50	36.75
est. weight in lb.- alum	17	35	52	70	87	105	122
est. weight in lb.- iron	47	94	141	189	236	283	330
Dim. "L", 7.00" spacing	-	12.25	19.25	26.25	33.25	-	-
est. weight in lb.- alum	-	41	64	87	111	-	-
est. weight in lb.- iron	-	110	173	236	299	-	-

Notes:

- 1) Isolations on P & T available - See Page 5 for Codes
- 2) Common X port option available - contact factory for P/N
- 3) Larger relief cavities available - contact factory for P/N

PART NUMBER SYSTEM

Aluminum D08 with 5.25" spacing, Common Y & SAE porting example: **BA08GPS**SHUABAA**



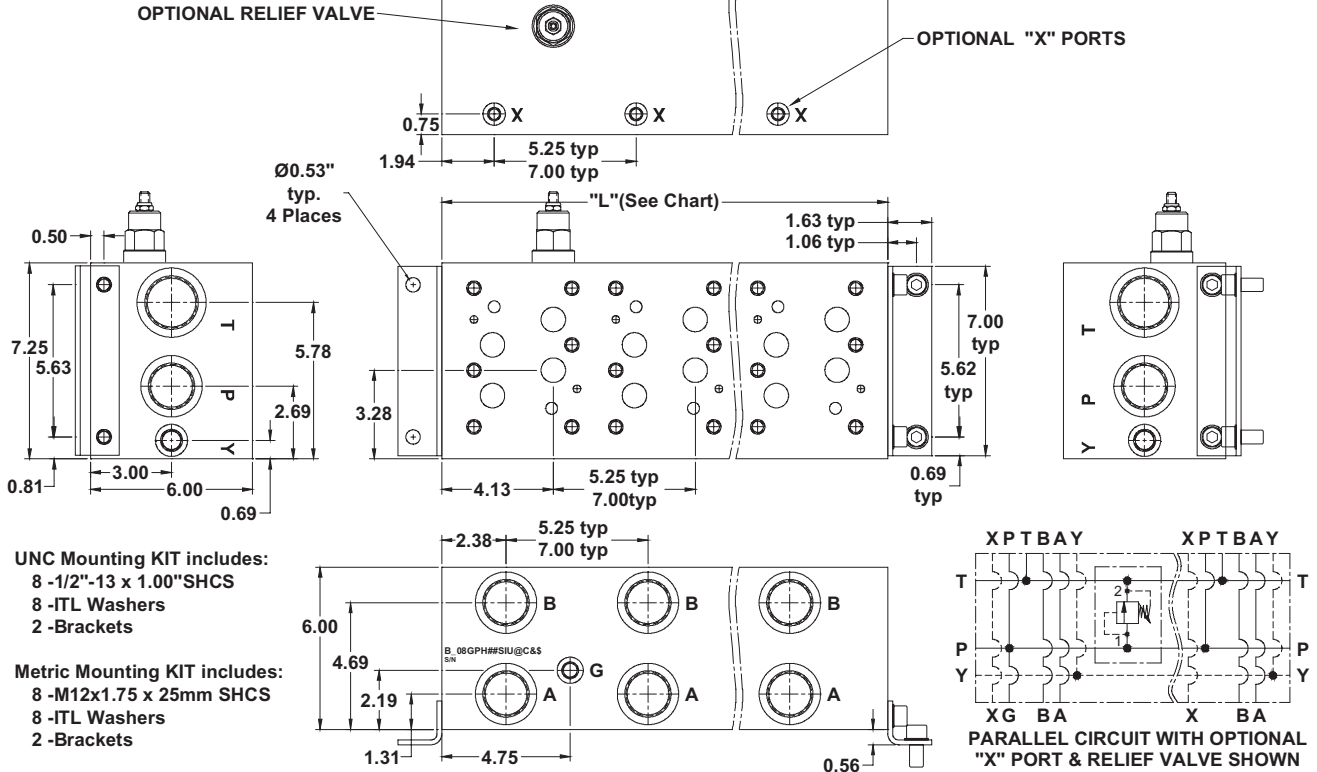
WE RESERVE THE RIGHT TO DISCONTINUE MODELS, OR CHANGE SPECIFICATIONS WITHOUT NOTICE OR INCURRING OBLIGATION

Lynch Products Can Be Modified to Suit Your Application



D08 High Flow Parallel Circuit Manifold

(See Page 1.99.01 for Relief Cartridges)



No. of Stations	1	2	3	4	5	6	7
Dim. "L", 5.25" spacing	6.00	11.25	16.50	21.75	27.00	32.25	37.50
est. weight in lb.- alum	28	52	77	101	126	150	175
est. weight in lb.- iron	75	141	207	273	339	405	471
Dim. "L", 7.00" spacing	-	13.00	20.00	27.00	34.00	-	-
est. weight in lb.- alum	-	61	93	126	158	-	-
est. weight in lb.- iron	-	163	251	339	427	-	-

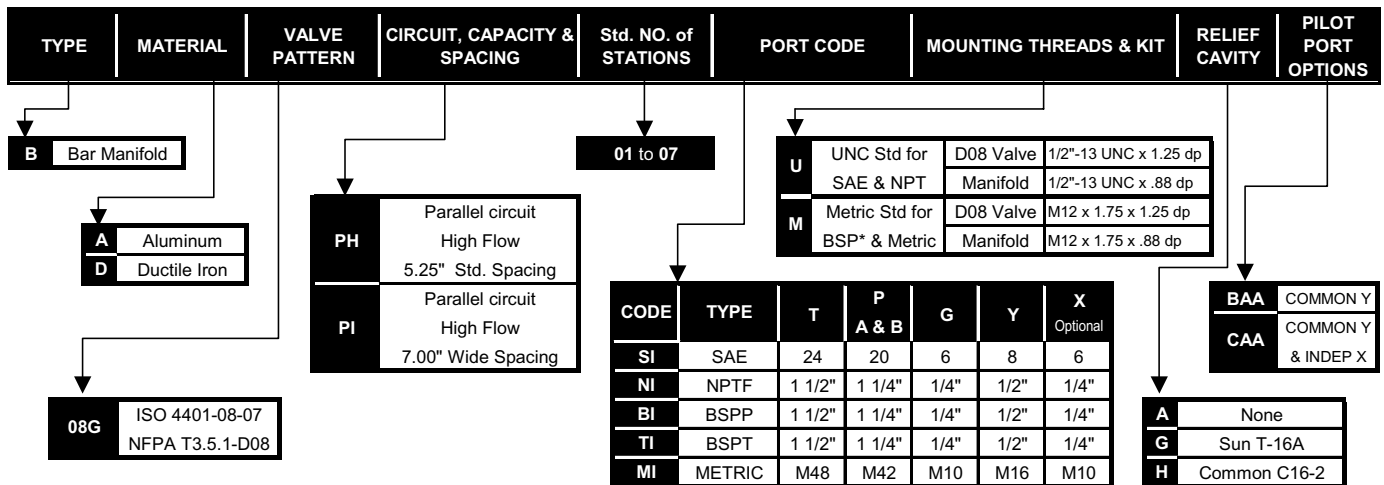
SHADED AREA AVAILABLE ON SPECIAL ORDER ONLY

Notes:

- 1) Isolations on P & T available - See Page 5 for Codes
- 2) Common X port option available - contact factory for P/N
- 3) Larger relief cavities available - contact factory for P/N

PART NUMBER SYSTEM

Aluminum D08 with 5.25" spacing, Common Y & SAE porting example: BA08GPH**SIUABAA



WE RESERVE THE RIGHT TO DISCONTINUE MODELS, OR CHANGE SPECIFICATIONS WITHOUT NOTICE OR INCURRING OBLIGATION

Lynch Products Can Be Modified to Suit Your Application

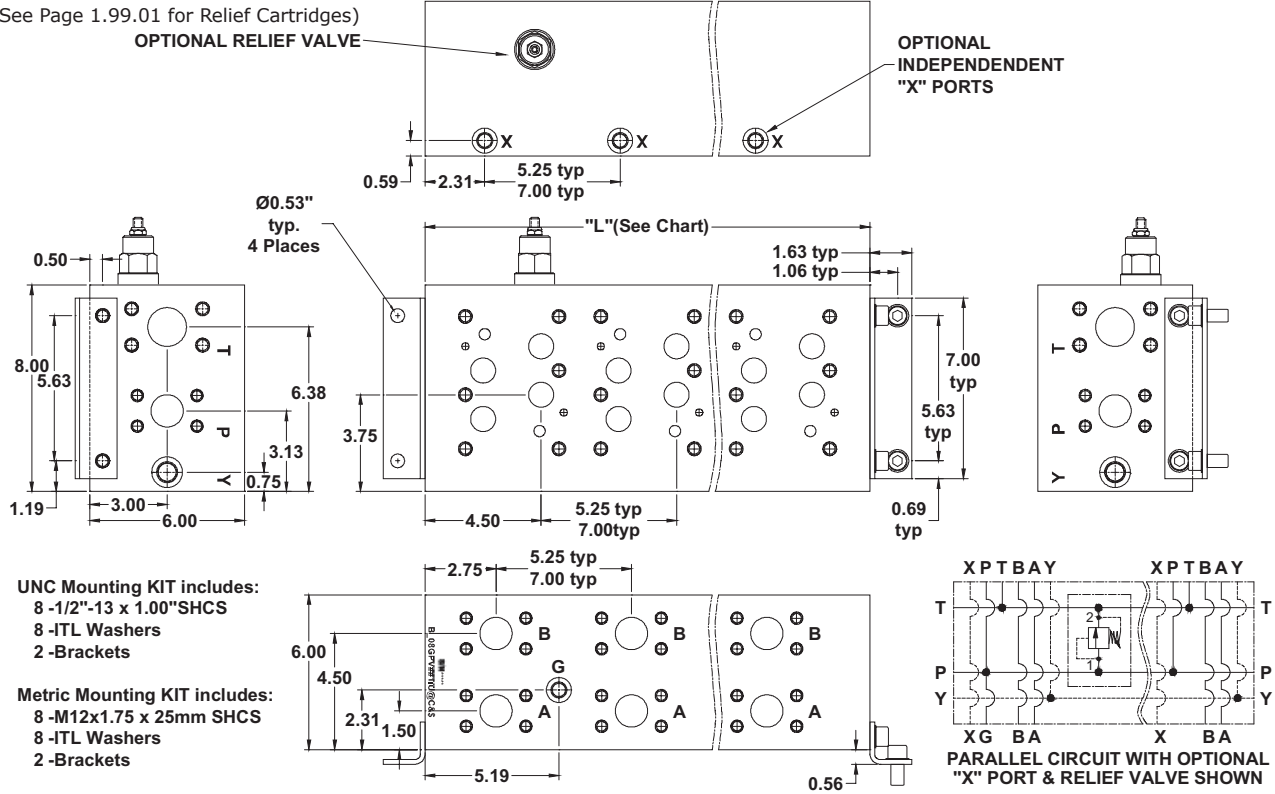
Lynch MANIFOLDS & VALVE PACKS

D08 Very High Flow Parallel Circuit with Flange Ports

1

BAR MANIFOLDS

(See Page 1.99.01 for Relief Cartridges)



UNC Mounting KIT includes:
 8 -1/2"-13 x 1.00" SHCS
 8 -ITL Washers
 2 -Brackets

Metric Mounting KIT includes:
 8 -M12x1.75 x 25mm SHCS
 8 -ITL Washers
 2 -Brackets

No. of Stations	1	2	3	4	5	6	7
Dim. "L", 5.25" spacing	6.75	12.00	17.25	22.50	27.75	33.00	38.25
est. weight in lb. - alum	31	55	79	103	127	150	174
est. weight in lb. - iron	83	148	212	277	342	406	471
Dim. "L", 7.00" spacing	-	13.75	20.75	27.75	34.75	-	-
est. weight in lb. - alum	-	63	95	127	158	-	-
est. weight in lb. - iron	-	169	255	342	428	-	-

SHADED AREA AVAILABLE ON SPECIAL ORDER ONLY

Notes:

- 1) Isolations on P & T available - See Page 5 for Codes
- 2) Common X port option available - contact factory for P/N
- 3) Larger relief cavities available - contact factory for P/N

PART NUMBER SYSTEM

Aluminum D08 with 5.25" spacing, Common Y & Flange porting example: **BA08GPV**1IUABAA**

TYPE	MATERIAL	VALVE PATTERN	CIRCUIT, CAPACITY & SPACING	Std. NO. of STATIONS	PORT CODE	MOUNTING THREADS & KIT	RELIEF CAVITY	PILOT PORT OPTIONS
B	Bar Manifold			01 to 07				
A	Aluminum							
D	Ductile Iron							
PV			Parallel circuit Very High Flow 5.25" Std. Spacing					
PW			Parallel circuit Very High Flow 7.00" Wide Spacing					
08G	ISO 4401-08-07 NFPA T3.5.1-D08							
U	UNC Std with SAE Ports					D08 Valve Manifold 1/2"-13 UNC x 1.25 dp 1/2"-13 UNC x .88 dp		
M	Metric Std with Metric Ports					D08 Valve Manifold M12 x 1.75 x 1.25 dp M12 x 1.75 x .88 dp		
CODE	TYPE	T	P	G*	Y*	X*		
11	SAE Code 61	1 1/2"	1 1/4"	6 M10	8 M16	6 M10		
* Gauge & Pilot Ports determined by Mounting Threads								
BAA	COMMON Y							
CAA	COMMON Y & INDEP X							
A	None							
G	Sun T-16A							
H	Common C16-2							

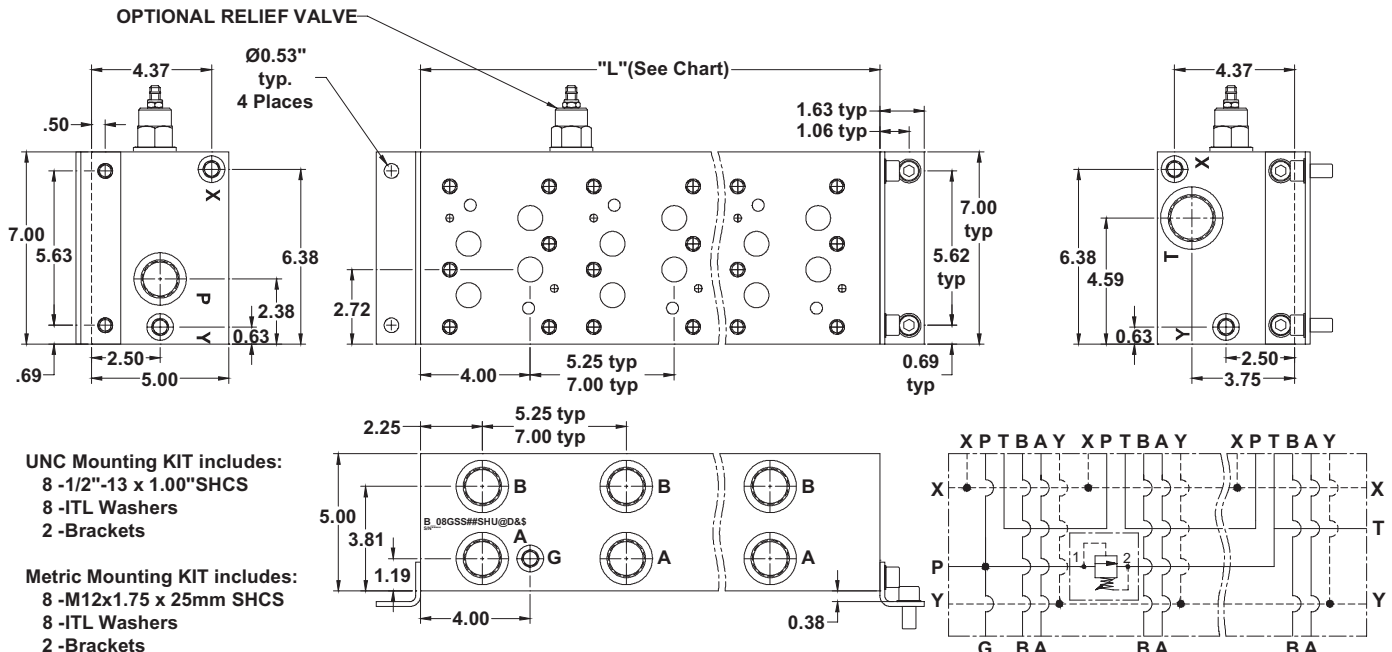
WE RESERVE THE RIGHT TO DISCONTINUE MODELS, OR CHANGE SPECIFICATIONS WITHOUT NOTICE OR INCURRING OBLIGATION

Lynch Products Can Be Modified to Suit Your Application



D08 Standard Flow Series Circuit Manifold

(See Page 1.99.01 for Relief Cartridges)



UNC Mounting KIT includes:
8 -1/2"-13 x 1.00"SHCS
8 -ITL Washers
2 -Brackets

Metric Mounting KIT includes:
8 -M12x1.75 x 25mm SHCS
8 -ITL Washers
2 -Brackets

SERIES CIRCUIT WITH COMMON "Y" and "X"
and OPTIONAL P TO T RELIEF SHOWN

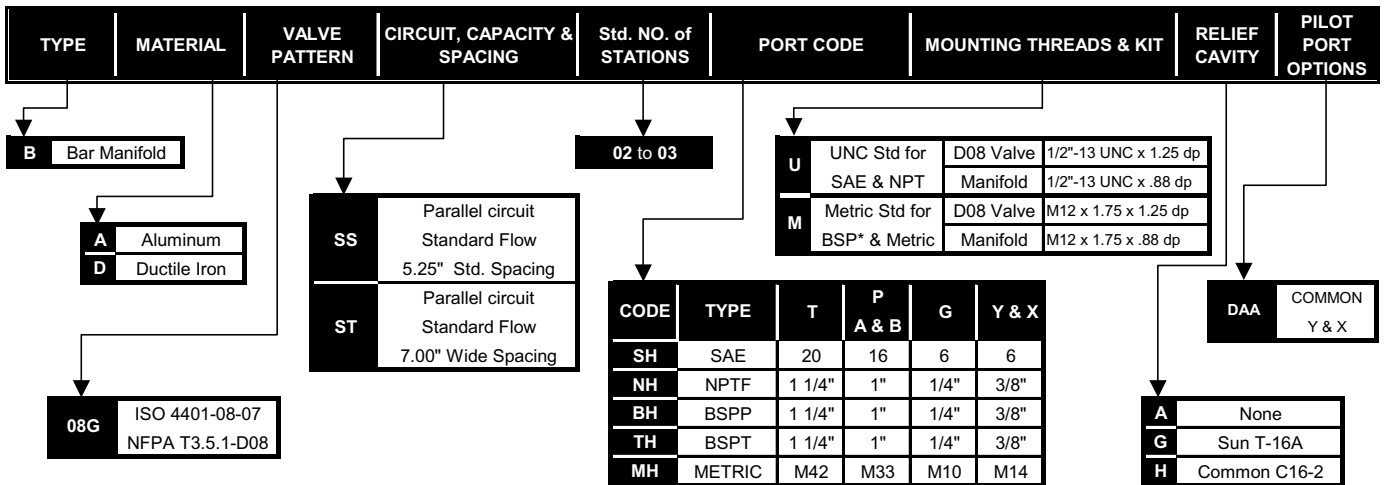
RELIEF
OPTION
AVAILABLE

No. of Stations	2	3	4
Dim. "L", 5.25" spacing	11.50	16.75	22.00
est. weight in lb.- alum	38	56	73
est. weight in lb.- iron	103	150	198
Dim. "L", 7.00" spacing	13.25	20.25	27.25
est. weight in lb.- alum	44	67	91
est. weight in lb.- iron	119	182	245

SHADED AREA AVAILABLE
ON SPECIAL ORDER ONLY

PART NUMBER SYSTEM

Aluminum D08 with 5.25" spacing, Common Y & X and SAE porting example: BA08GSS**SHUADAA



WE RESERVE THE RIGHT TO DISCONTINUE MODELS, OR CHANGE SPECIFICATIONS WITHOUT NOTICE OR INCURRING OBLIGATION

Lynch Products Can Be Modified to Suit Your Application