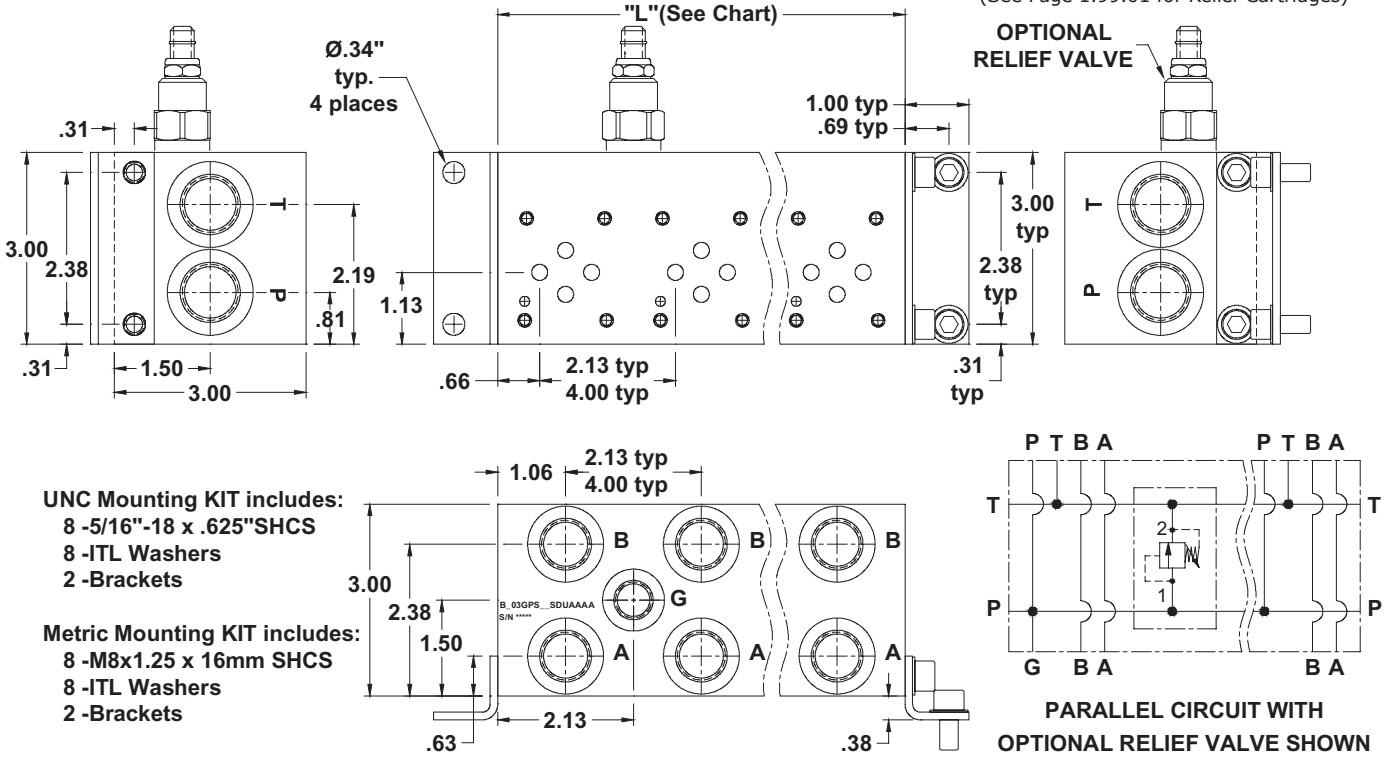


Lynch MANIFOLDS & VALVE PACKS

D03 Standard Flow Parallel Circuit Manifold

1

BAR MANIFOLDS



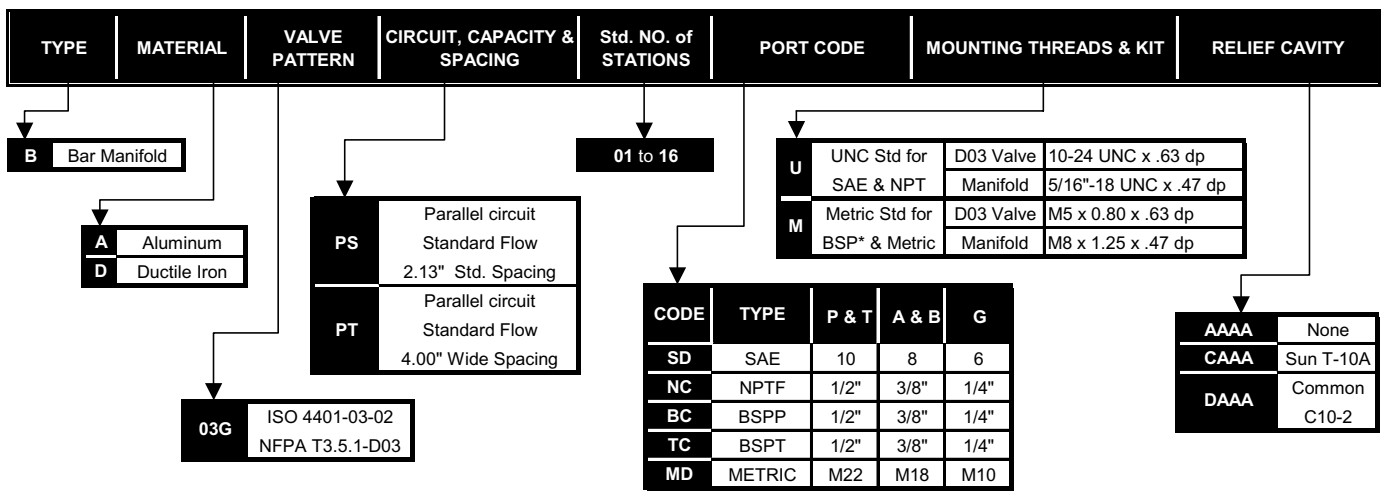
No. of Stations	1	1*	2	3	4	5	6	7	8	9	10	11	12	13	14	15	16
Dim. "L", 2.13" spacing	2.13	3.25	4.25	6.38	8.50	10.63	12.75	14.88	17.00	19.13	21.25	23.38	25.50	27.63	29.75	31.88	34.00
est. weight in lb.- alum	3	4	4	6	8	9	11	12	14	16	18	20	21	22	24	26	27
est. weight in lb.- iron	5	7	9	13	17	21	26	30	34	38	42	47	51	55	59	63	68
Dim. "L", 4.00" spacing	-	-	6.13	10.13	14.13	18.13	22.13	26.13	30.13	34.13	38.13	-	-	-	-	-	-
est. weight in lb.- alum	-	-	6	9	12	15	19	22	25	28	32	-	-	-	-	-	-
est. weight in lb.- iron	-	-	12	20	28	36	45	53	61	69	78	-	-	-	-	-	-

* DIMENSIONS FOR 1 STATION WITH RELIEF CAVITY & GAUGE PORT
 NO GAUGE PORT SUPPLIED WITH SINGLE STATION MANIFOLD

SHADED AREA AVAILABLE ON SPECIAL ORDER ONLY

PART NUMBER SYSTEM

Aluminum D03 with 2.13" Spacing & SAE Porting example: BA03GPS**SDUAAAA



WE RESERVE THE RIGHT TO DISCONTINUE MODELS, OR CHANGE SPECIFICATIONS WITHOUT NOTICE OR INCURRING OBLIGATION

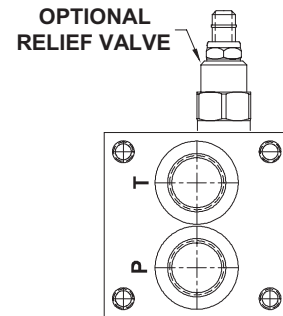
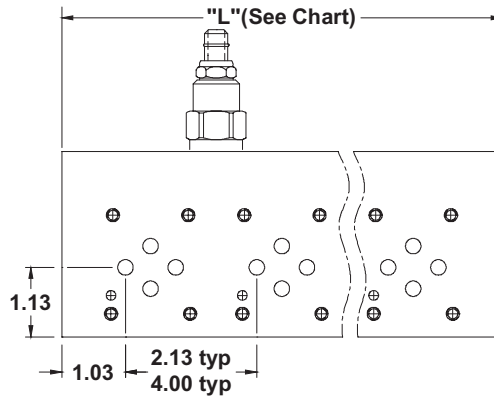
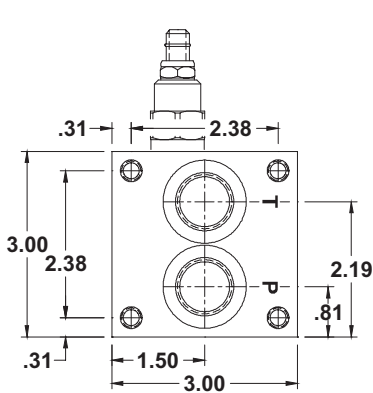
Lynch Products Can Be Modified to Suit Your Application



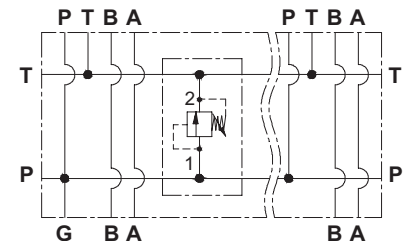
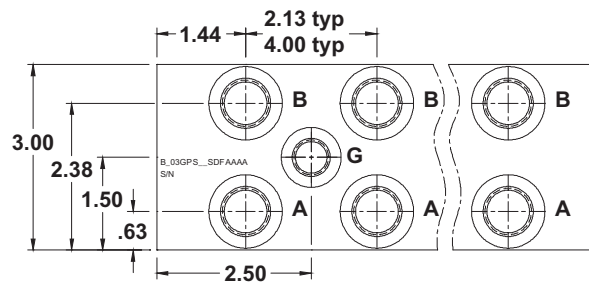
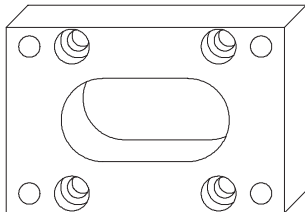
D03 Std Flow Parallel Circuit Manifold (4 Bolt)

Note: Extra length ensures P & T galleries from interface are not obstructed by the end port fittings

(See Page 1.99.01 for Relief Cartridges)



Mounting Kits must be ordered separately.
"MK 300 V" Vertical Mounting Kit shown below:



PARALLEL CIRCUIT WITH OPTIONAL RELIEF VALVE SHOWN

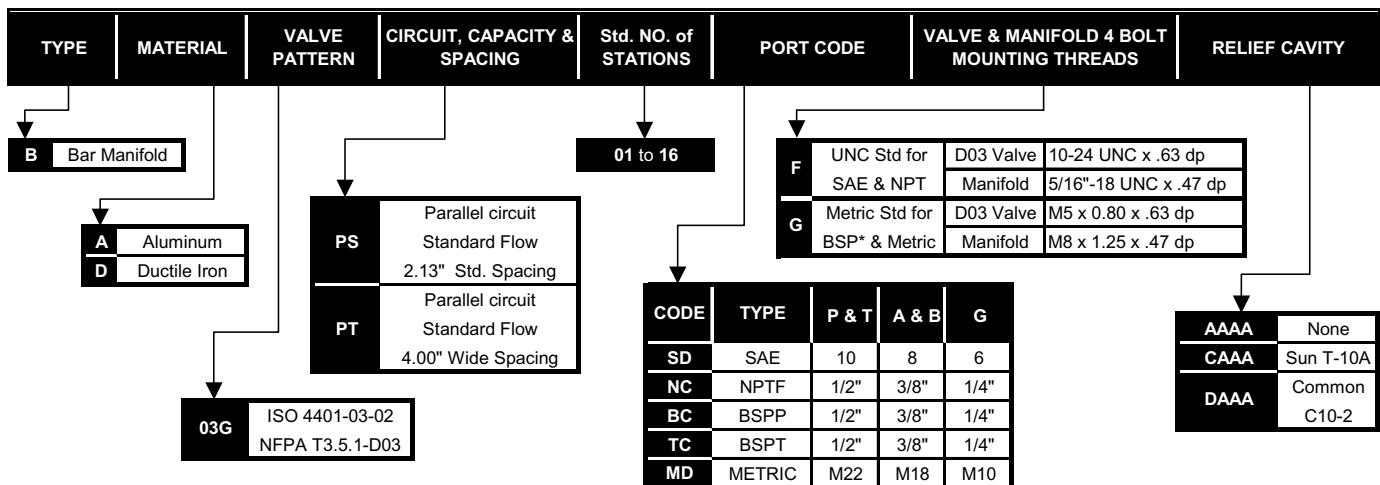
No. of Stations	1	1*	2	3	4	5	6	7	8	9	10	11	12	13	14	15	16
Dim. "L", 2.13" spacing	2.88	3.63	5.00	7.13	9.25	11.38	13.50	15.63	17.75	19.88	22.00	24.13	26.25	28.38	30.50	32.63	34.75
est. weight in lb.- alum	3	4	5	7	8	10	12	13	15	17	19	20	22	24	25	27	29
est. weight in lb.- iron	7	8	11	15	19	24	28	32	37	41	45	49	54	58	62	67	71
Dim. "L", 4.00" spacing	-	-	6.88	10.88	14.88	18.88	22.88	26.88	30.88	34.88	38.88	-	-	-	-	-	-
est. weight in lb.- alum	-	-	6	10	13	16	19	23	26	29	32	-	-	-	-	-	-
est. weight in lb.- iron	-	-	15	23	31	39	47	55	63	71	79	-	-	-	-	-	-

* DIMENSIONS FOR 1 STATION WITH RELIEF CAVITY & GAUGE PORT
NO GAUGE PORT SUPPLIED WITH SINGLE STATION MANIFOLD

SHADED AREA AVAILABLE ON SPECIAL ORDER ONLY

PART NUMBER SYSTEM

Aluminum D03 with 2.13" Spacing & SAE Porting example: BA03GPS**SDFAAAA



WE RESERVE THE RIGHT TO DISCONTINUE MODELS, OR CHANGE SPECIFICATIONS WITHOUT NOTICE OR INCURRING OBLIGATION

Lynch Products Can Be Modified to Suit Your Application

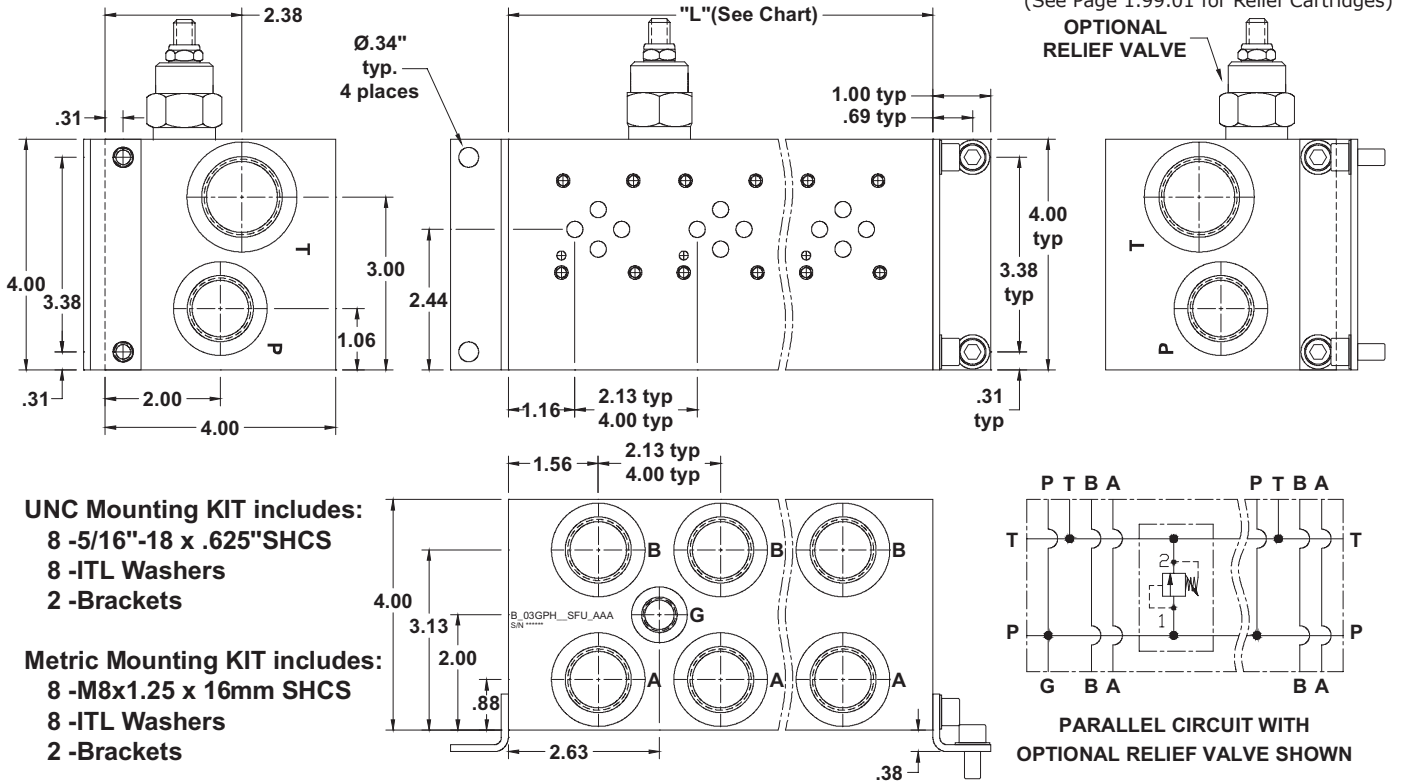


Lynch MANIFOLDS & VALVE PACKS

D03 High Flow Parallel Circuit Manifold

1

BAR MANIFOLDS



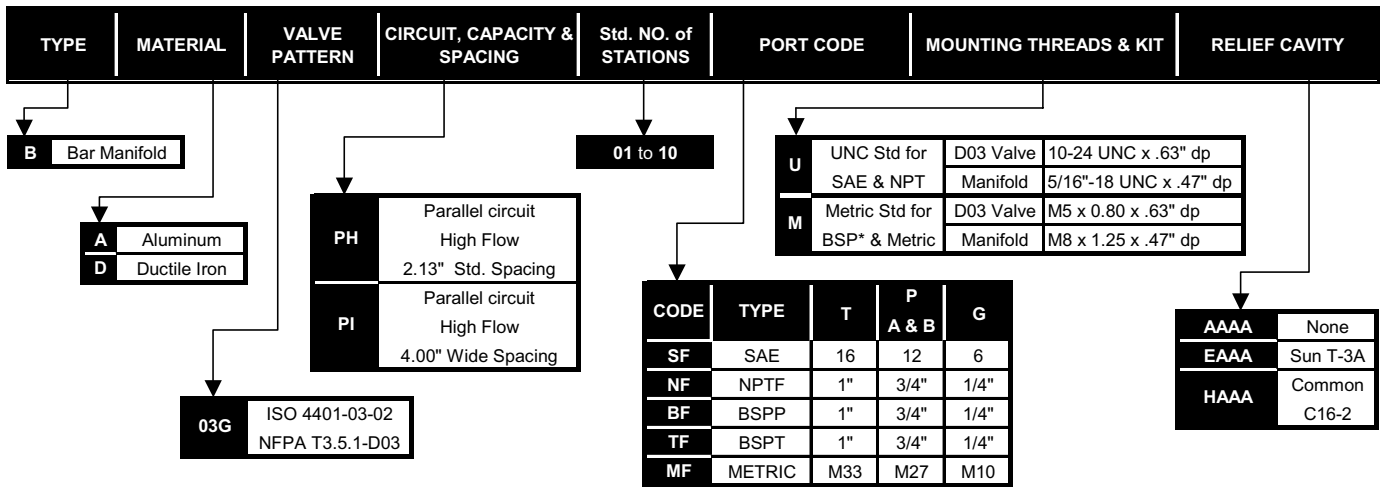
- UNC Mounting KIT includes:**
 8 -5/16"-18 x .625"SHCS
 8 -ITL Washers
 2 -Brackets
- Metric Mounting KIT includes:**
 8 -M8x1.25 x 16mm SHCS
 8 -ITL Washers
 2 -Brackets

No. of Stations	1	1*	2	3	4	5	6	7	8	9	10	11	12	13	14	15	16
Dim. "L", 2.13" spacing	3.13	4.25	5.25	7.38	9.50	11.63	13.75	15.88	18.00	20.13	22.25	24.38	26.50	28.63	30.75	32.88	35.00
est. weight in lb.- alum	5	7	8	11	14	17	21	24	27	30	33	36	39	42	45	48	51
est. weight in lb.- iron	13	17	21	29	38	46	54	62	71	79	87	96	104	112	120	129	137
Dim. "L", 4.00" spacing	-	-	7.13	11.13	15.13	19.13	23.13	27.13	31.13	35.13	39.13	-	-	-	-	-	-
est. weight in lb.- alum	-	-	11	17	23	28	34	40	46	51	57	-	-	-	-	-	-
est. weight in lb.- iron	-	-	28	44	60	75	91	106	122	137	153	-	-	-	-	-	-

* DIMENSIONS FOR 1 STATION WITH RELIEF CAVITY & GAUGE PORT
 NO GAUGE PORT SUPPLIED WITH SINGLE STATION MANIFOLD
 SHADED AREA AVAILABLE ON SPECIAL ORDER ONLY

PART NUMBER SYSTEM

Aluminum D03 with 2.13" Spacing & SAE Porting example: BA03GPH**SFUAAAA



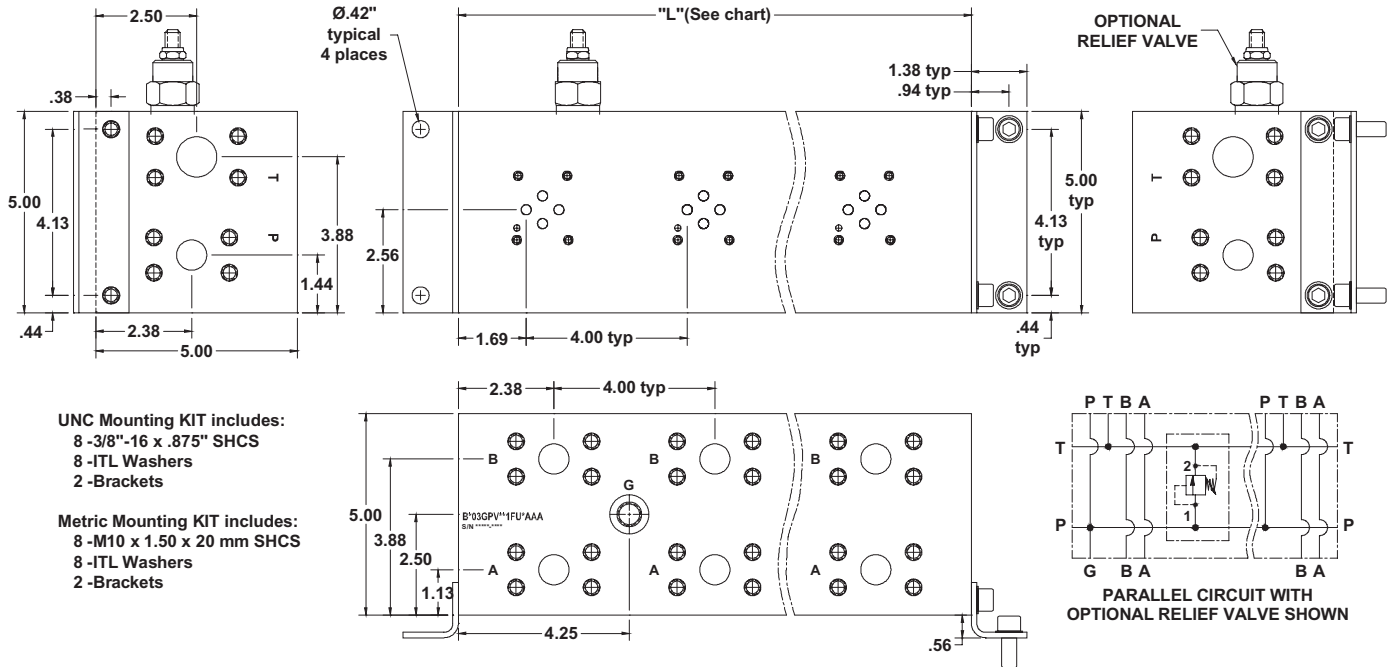
WE RESERVE THE RIGHT TO DISCONTINUE MODELS, OR CHANGE SPECIFICATIONS WITHOUT NOTICE OR INCURRING OBLIGATION

Lynch Products Can Be Modified to Suit Your Application



D03 Very High Flow Parallel Circuit with Flange Ports

(See Page 1.99.01 for Relief Cartridges)



UNC Mounting KIT includes:
8 - 3/8"-16 x .875" SHCS
8 - ITL Washers
2 - Brackets

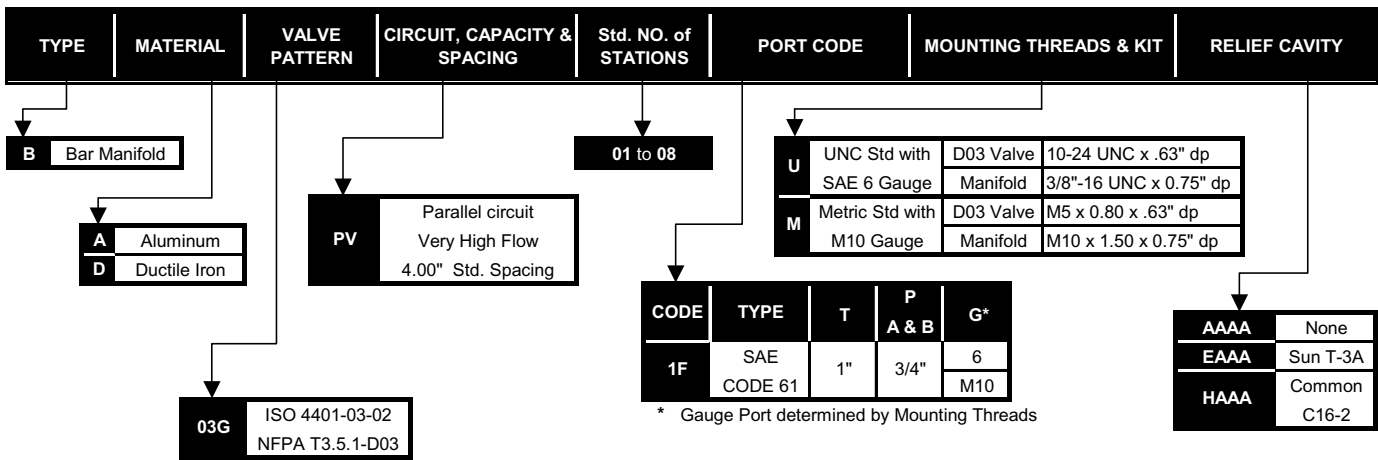
Metric Mounting KIT includes:
8 - M10 x 1.50 x 20 mm SHCS
8 - ITL Washers
2 - Brackets

No. of Stations	1*	1**	2	3	4	5	6	7	8	9
Dim. "L", 4.00" spacing	4.75	5.50	8.75	12.75	16.75	20.75	24.75	28.75	32.75	36.75
est. weight in lb.- alum	11	14	20	29	38	47	56	65	74	83
est. weight in lb.- iron	28	38	52	76	101	125	149	174	198	222

** DIMENSIONS FOR 1 STATION WITH C10-2 RELIEF CAVITY
* DIMENSIONS FOR 1 STATION WITH T-3A RELIEF CAVITY
SHADED AREA AVAILABLE ON SPECIAL ORDER ONLY

PART NUMBER SYSTEM

Aluminum D03 with 4.00" Spacing & UNC Mounting example: BA03GP**1FUAAAA



WE RESERVE THE RIGHT TO DISCONTINUE MODELS, OR CHANGE SPECIFICATIONS WITHOUT NOTICE OR INCURRING OBLIGATION

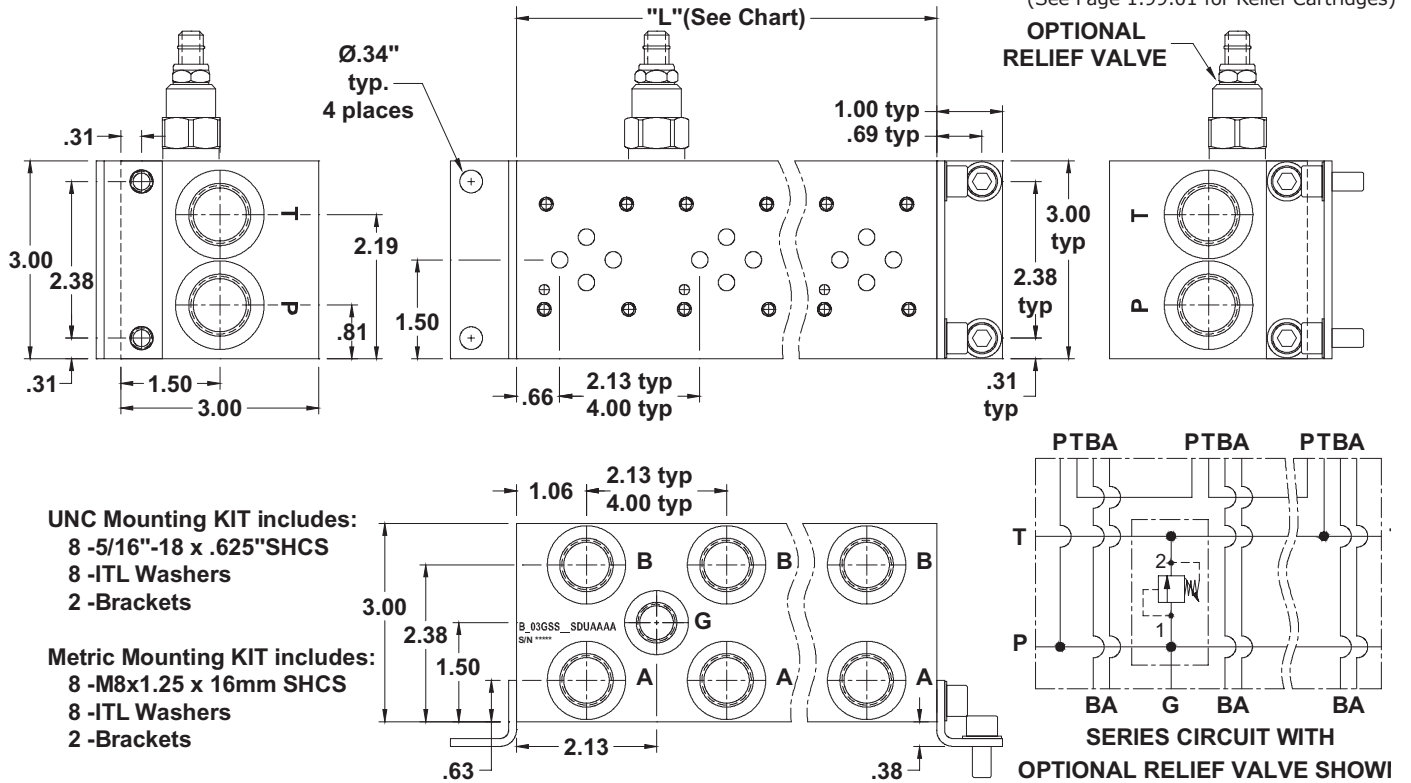
Lynch Products Can Be Modified to Suit Your Application

Lynch MANIFOLDS & VALVE PACKS

D03 Standard Flow Series Circuit Manifold

1

BAR MANIFOLDS

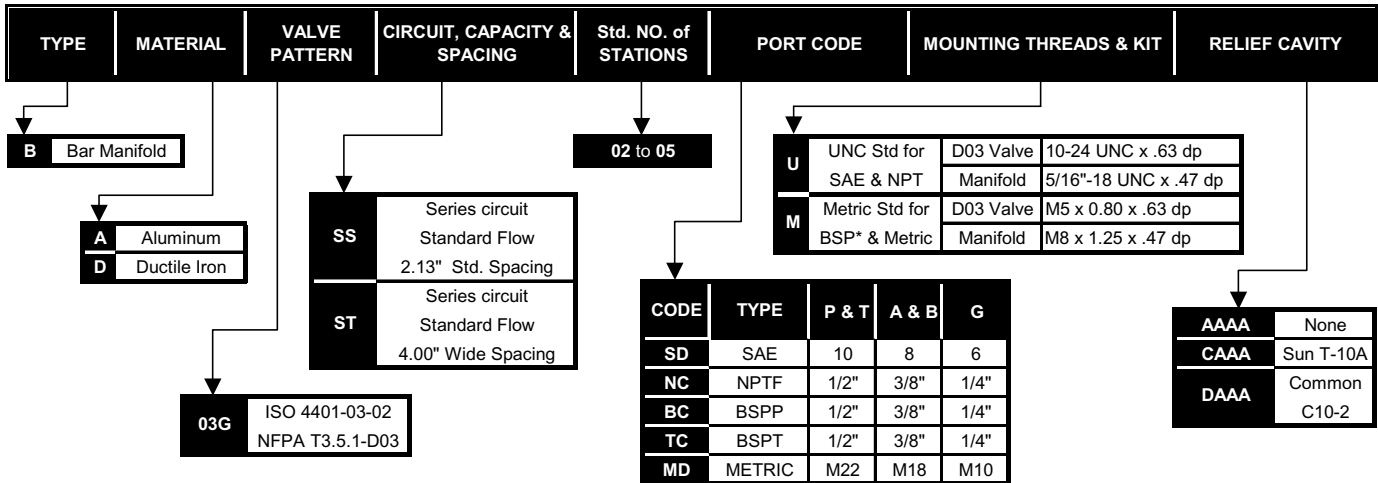


No. of Stations	2	3	4	5	6	7	8	9	10	11	12	13	14	15	16
Dim. "L", 2.13" spacing	4.25	6.38	8.50	10.63	12.75	14.88	17.00	19.13	21.25	23.38	25.50	27.63	29.75	31.88	34.00
est. weight in lb.- alum	4	6	8	9	11	12	14	16	18	20	21	22	24	26	27
est. weight in lb.- iron	9	13	17	21	26	30	34	38	42	47	51	55	59	63	68
Dim. "L", 4.00" spacing	6.13	10.13	14.13	18.13	22.13	26.13	30.13	34.13	38.13	-	-	-	-	-	-
est. weight in lb.- alum	6	9	12	15	19	22	25	28	32	-	-	-	-	-	-
est. weight in lb.- iron	12	20	28	36	45	53	61	69	78	-	-	-	-	-	-

SHADED AREA AVAILABLE ON SPECIAL ORDER ONLY

PART NUMBER SYSTEM

Aluminum D03 with 2.13" Spacing & SAE Porting example: **BA03GSS**SDUAAAA**



WE RESERVE THE RIGHT TO DISCONTINUE MODELS, OR CHANGE SPECIFICATIONS WITHOUT NOTICE OR INCURRING OBLIGATION

Lynch Products Can Be Modified to Suit Your Application

