

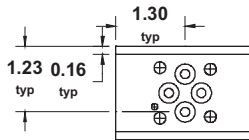
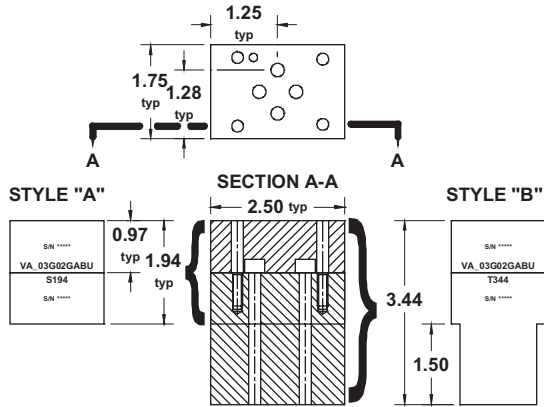
# Lynch MANIFOLDS & VALVE PACKS

## D02 to D03 - Valve Adapters - D03 to D02

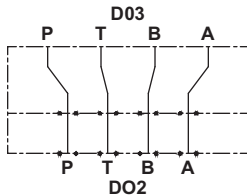
3

VALVE ADAPTERS

VA\_02G03GAB\*A194 / VA\_02G03GAB\*B344

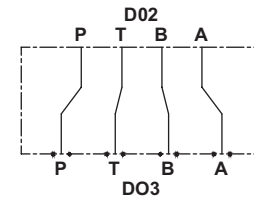
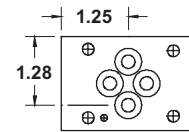
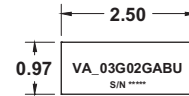
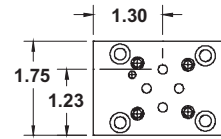


**Note for Assembly:**  
 1) Fasten base to D02 manifold with bolts supplied.  
 2) D03 Threads begin at 0.97" depth from interface surface.



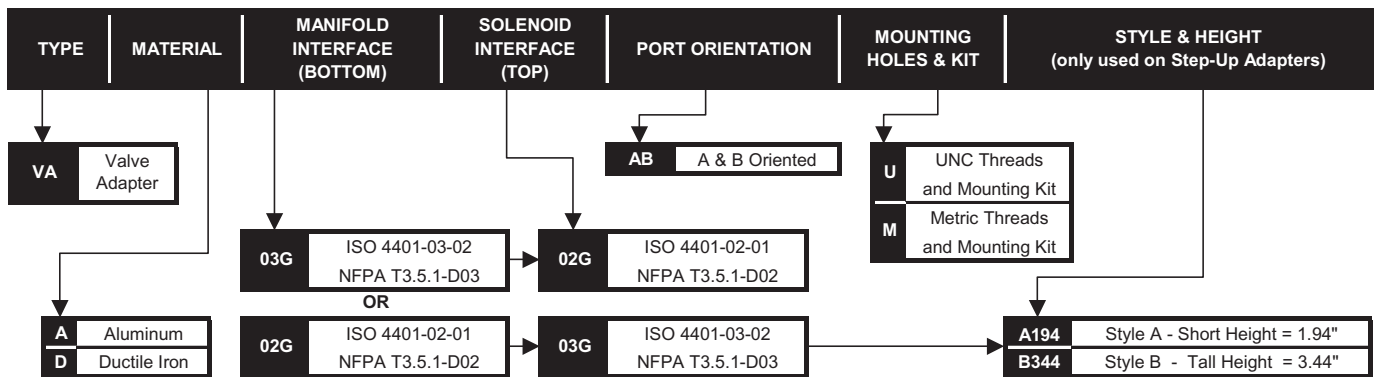
- |                                   |                                      |
|-----------------------------------|--------------------------------------|
| <b>UNC mounting kit includes:</b> | <b>Metric mounting kit includes:</b> |
| 4 - #10-24 x 1.50" SHCS           | 4 - M5 x 0.80 x 35mm SHCS            |
| or                                | or                                   |
| 4 - #10-24 x 3.00" SHCS           | 4 - M5 x 0.80 x 70mm SHCS            |
| 8 - 010 O-ring viton              | 8 - 010 O-ring viton                 |
| 2 - Split Pin                     | 2 - Split Pin                        |

VA\_03G02GAB\*



- |                                   |                                      |
|-----------------------------------|--------------------------------------|
| <b>UNC mounting kit includes:</b> | <b>Metric mounting kit includes:</b> |
| 4 - #10-24 x 1.00" SHCS           | 4 - M5 x 0.80 x 25mm SHCS            |
| 4 - 012 O-ring viton              | 4 - 012 O-ring viton                 |
| 1 - Split Pin                     | 1 - Split Pin                        |

### PART NUMBER SYSTEM



WE RESERVE THE RIGHT TO DISCONTINUE MODELS, OR CHANGE SPECIFICATIONS WITHOUT NOTICE OR INCURRING OBLIGATION

Lynch Products Can Be Modified to Suit Your Application

