



FOR USER/OPERATOR SAFETY
SEE DETAILS PAGE L11

Non P.T.O. Products

Non P.T.O. Product Safety Warning

For safety, purchaser or user must provide protective guards over all rotating shafts and any moving apparatus mounted thereon. The user is responsible for checking all applicable safety codes in his area and for the equipment utilizing this component, and providing suitable guards.

DO NOT OPERATE WITHOUT PROPER GUARDS. FAILURE TO GUARD CAN RESULT IN SERIOUS INJURY OR DEATH AND DAMAGE TO THE EQUIPMENT.

Buyer shall be solely responsible for determining the adequacy of this product for any and all uses to which the buyer shall apply this product. The application by the buyer shall not be subject to any implied warranty of fitness for a particular purpose. The purchaser/user of this component accepts responsibility for the above issues when removing the safety warning label from the component.

Non P.T.O. Products

Square Bushing Weld-Ons

I.D.	O.D.	Length (Inches)	Part Number
7/8 & 1 Square	1 3/4	2 1/4	0332-00360
1 1/8 Square	2	2 1/2	0332-00362
1 1/4 Square	2 1/4	2 1/2	0332-00364



Sprocket Repair Hub for Transit-Mixer

No. of Splines	Spline Description	Spline O.D.	Shoulder O.D.	Pilot O.D.	Pilot Length	O.A. Length	Part Number
23	8/16 INV.	3	4 1/2	4	1 15/32	3 3/4	0332-00045

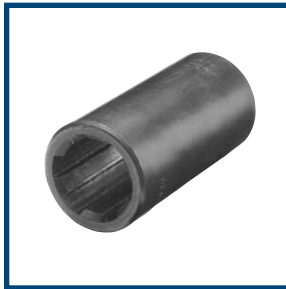


Certified prints are available upon request



FOR USER/OPERATOR SAFETY
SEE DETAILS PAGE L11

Non P.T.O. Products



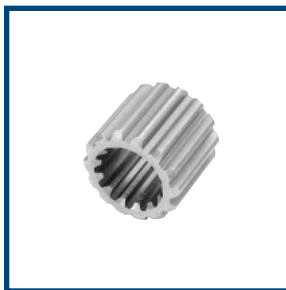
Splined Couplings

Splined Size	O.D.	Length (inches)	Part Number
3/4-6	1 3/8	2 1/2	0332-00336
7/8-6	1 3/8	2 1/2	0332-00337
3 1/2-10 (IHC CUB & KUBOTA)	1 3/8	2 3/4	0332-00340
1-10	1 3/8	2 1/2	0332-00338
1-6	1 3/8	2 3/4	0332-00341
1 1/2-6	1 5/16	2 3/4	0332-00344
1 1/4-6	1 7/8	3 1/4	0332-00342
1 1/4-10	1 3/4	3 3/4	0332-00348
1 3/8-6	1 3/4	3 3/4	0332-00345
1 3/8-10	1 3/4	3	0332-00365
1 1/2-6	1 7/8	3 3/4	0332-00347
1 1/2-10	1 7/8	3	0332-00367
1 5/8-6	2	3 3/4	0332-00349
1 3/4-6	2 1/4	3 3/4	0332-00346



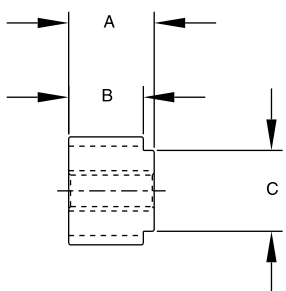
Involute Splined Couplings

No. of Splines	Spline Description	Spline O.D.	Coupling O.D.	Coupling Length	Part Number
9	16/32 DP 30° PA	.625	1 3/8	2	0332-00027
11	16/32 DP 30° PA	.750	1 3/8	2	0332-00066
13	16/32 DP 30° PA	.875	1 3/8	3	0332-00028
15	16/32 DP 30° PA	1.000	1 1/2	3	0332-00043
14	12/24 DP 30° PA	1.250	1 3/4	3	0332-00029
21	16/32 DP 30° PA	1.375	1 3/4	3	0332-00350
20	12/24 DP 30° PA	1.750	2 1/4	3 3/4	0332-00320
13	8/16 DP 30° PA	1.750	2 1/4	3 3/4	0332-00030
27	16/32 DP 30° PA	1.750	2 1/4	3	0332-00351



Hydraulic Reducer Bushings

Male Spline	Female Spline	A	B	C	Part Number
1 3/4 - 13T 8/16 DP, 30° PA	3/4 - 9T 16/32 DP, 30° PA	1 3/8	1 7/16	1 5/16	23-01531
1 3/4 - 13T 8/16 DP, 30° PA	7/8 - 13T 16/32 DP, 30° PA	1 3/8	1 7/16	1 5/16	23-01532
1 3/4 - 13T 8/16 DP, 30° PA	1 1/4 - 14T 12/24 DP, 30° PA	1 7/16	N/A	N/A	23-01533
1 3/4 - 13T 8/16 DP, 30° PA	1 - 15T 16/32 DP, 30° PA	1 3/8	1 7/16	1 5/16	23-01558
1 1/4 - 14T 12/24 DP, 30° PA	.625 Round 5/16 x 3/4 KW	1 3/8	N/A	N/A	0223-02150
1 1/4 - 14T 12/24 DP, 30° PA	3/8 - 9T 16/32 DP, 30° PA	1 3/8	N/A	N/A	0223-02149
1 1/4 - 14T 12/24 DP, 30° PA	7/8 - 13T 16/32 DP, 30° PA	1 3/8	N/A	N/A	0223-02148



Certified prints are available upon request

Non P.T.O. Products



FOR USER/OPERATOR SAFETY
SEE DETAILS PAGE L11

Non P.T.O. Products

Splined Shafts



Size	Spline	Length (inches)	Part Number
1	6	10	0332-00390
1 1/8	6	10	0332-00391
1 1/4	6	10	0332-00392
1 1/4	10	10	0332-00393
1 3/8	6	10	0332-00394
1 1/2	6	10	0332-00396
1 5/8	6	10	0332-00397
1 3/4	6	10	0332-00398

Extension Shafts



Spline	Spline	Length (inches)	Part Number
1 3/8-6	1 3/8-6	9	0332-00356
1 3/8-6	1 3/8-6	9	0332-00357*

* Manufactured to order

Involute Splined Shafts



No. of Splines	Spline Description	Spline O.D.	Shaft Length	Part Number
9	16/32 DP 30° PA	.625	6	0332-00023
13	16/32 DP 30° PA	.875	6	0332-00024
15	16/32 DP 30° PA	1	8	0332-00044
14	12/24 DP 30° PA	1.25	10	0332-00025
21	16/32 DP 30° PA	1.375	10	0332-00395
26	20/40 DP 30° PA	1.358	10	0332-00414*
16	10/20 DP 30° PA	1.7	10	0332-00038*
13	8/16 DP 30° PA	1.75	10	0332-00026
27	16/32 DP 30° PA	1.75	10	0332-00399
34	20/40 DP 30° PA	1.750	10	0332-00415*
16	8/16 DP 30° PA	2.125	10	0332-00039

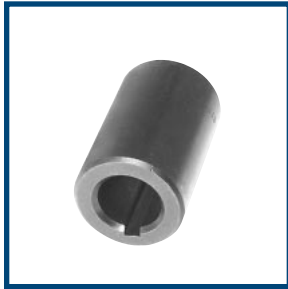
* Manufactured to order

Certified prints are available upon request



FOR USER/OPERATOR SAFETY
SEE DETAILS PAGE L11

Non P.T.O. Products

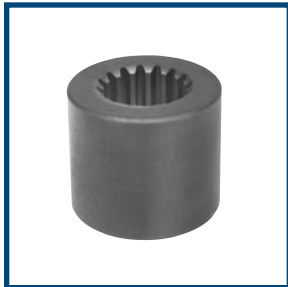


Round Bore Couplings

- ◆ Use to join two shafts
- ◆ Repair pulleys, gears, sprockets, etc.
- ◆ O.D. and I.D. concentricity not held to close limits
- ◆ If precision O.D. and I.D. concentricity is required, write for quotations
- ◆ Not drilled for setscrews

Bore Size	Keyway	O.D.	Length(inches)	Part Number
3/4	3/16	1 1/2	2 3/4	0332-00380
7/8	3/16	1 1/2	2 3/4	0332-00381
1	1/4	1 3/4	2 3/4	0332-00382
1 1/16	1/4	1 3/4	2 3/4	0332-00383*
1 1/8	1/4	2	3	0332-00384
1 3/16	1/4	2	3	0332-00385
1 1/4	1/4	2	3	0332-00386
1 5/16	5/16	2	3	0332-00387*
1 3/8	5/16	2 1/8	3	0332-00388
1 7/16	3/8	2 1/8	3	0332-00389
1 1/2	3/8	2 1/4	3	0332-00379

* Manufactured to order



Precision Splined Hubs

- ◆ Designed for Car-Lynn hydraulic motors
- ◆ Made from low alloy, high carbon steel
- ◆ Close tolerance O.D. and I.D. concentricity permits accurate mounting of sheave or sprocket
- ◆ Precision also permits accurate chucking for additional mounting

No. of Splines	Splines Description		Spline O.D.	Hub O.D.	Length(inches)	Part Number
6	6B	Str. Side	1.000	2.001/2.000	1 3/4	0332-00031
18	1.25 Module	20° PA	.984	1.751/1.750	1 3/4	0332-00085*
9	16/32 DP	30° PA	.625	1.251/1.250	1 1/4	0332-00032
11	16/32 DP	30° PA	.750	1.501/1.500	1 1/2	0332-00071
13	16/32 DP	30° PA	.875	1.501/1.500	1 1/2	0332-00033
15	16/32 DP	30° PA	1.000	1.751/1.750	1 3/4	0332-00072
21	16/32 DP	30° PA	1.375	2.251/2.250	2 1/8	0332-00035
17	12/24 DP	30° PA	1.500	2.251/2.250	2 1/4	0332-00093
23	16/32 DP	30° PA	1.500	2.251/2.250	2 1/8	0332-00073
27	16/32 DP	30° PA	1.750	3.001/3.000	2 1/4	0332-00075
14	12/24 DP	30° PA	1.250	2.251/2.250	2	0332-00034
16	10/20 DP	30° PA	1.700	2.751/2.750	2 1/4	0332-00036
13	8/16 DP	30° PA	1.750	3.001/3.000	2 1/4	0332-00074
16	8/16 DP	30° PA	2.125	3.501/3.500	2 3/16	0332-00037

* Manufactured to order

Certified prints are available upon request