

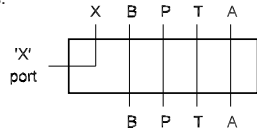


Daman S04 Servo Tapping Plate

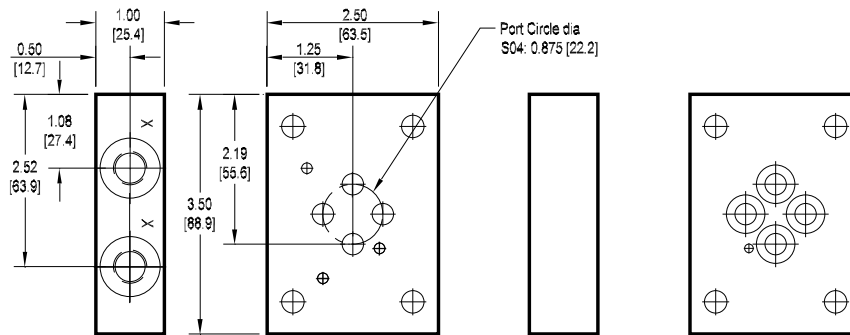
0.875 Port Circle

Pilot Port Tapping Plate

Subplate interface seal kit is supplied.*
See page 102 for itemized list.
* Plug not included on metric ported parts.



Use this tapping plate when an external pilot port is required. Two ports are provided to facilitate the various valves available. This tapping plate stacks between the valve and its subplate. Valve mounting bolts of sufficient length to pass through the valve and this tapping plate are supplied by the user.



Specifications, descriptions, and dimensional data are subject to correction or change without notice or incurring obligation.

5

Ordering Information

