

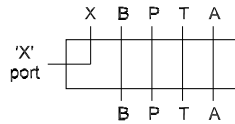


## Daman S02, S71 Pilot Port Tapping Plate

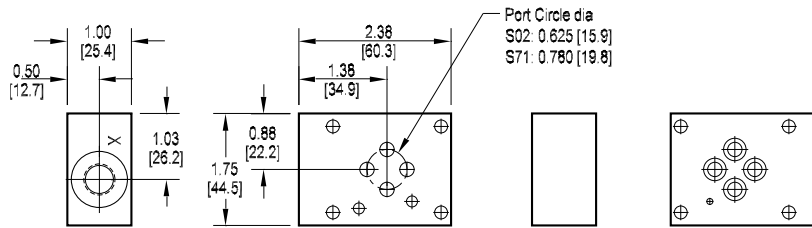
0.625, 0.780 Port Circle

### Pilot Port Tapping Plate

Subplate interface seal kit is supplied.  
See page 102 for itemized list.



Use this tapping plate when an external pilot port is required. This tapping plate stacks between the valve and its subplate. Valve mounting bolts of sufficient length to pass through the valve and this tapping plate are supplied by the user.



5

Specifications, descriptions, and dimensional data are subject to correction or change without notice or incurring obligation.

## Ordering Information

