

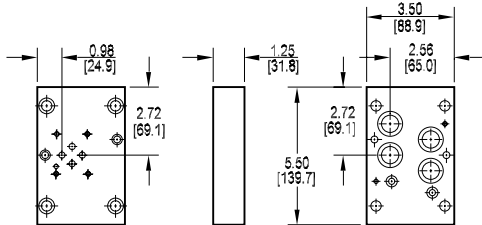
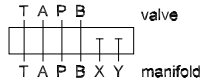


## Valve Adaptors for D07 Manifolds

### Adapt D03 valve to D07 manifold

Valve mtg: UNC #10-24 x 0.44 DP or  
Metric M5-0.8mm ISO 6H x [11.1] DP

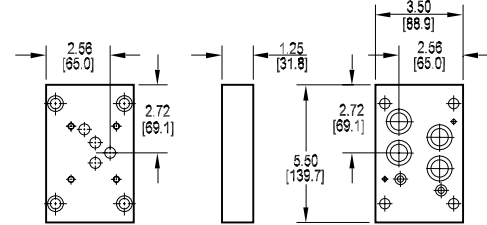
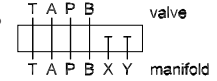
Adaptor mounting hardware is supplied.  
See page 62 for itemized list.



### Adapt D05 valve to D07 manifold

Valve mtg: UNC 0.25-20 x 0.50 DP or  
Metric M6-1.0mm ISO 6H x [12.7] DP

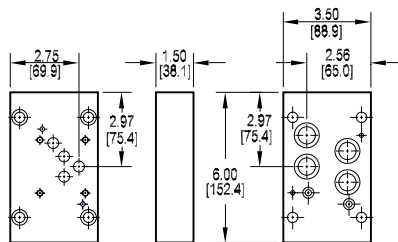
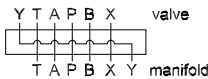
Adaptor mounting hardware is supplied.  
See page 62 for itemized list.



### Adapt D05H valve to D07 manifold

Valve mtg: UNC 0.25-20 x 0.50 DP or  
Metric M6-1.0mm ISO 6H x [12.7] DP

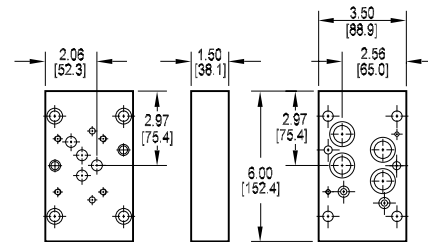
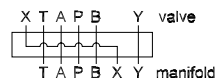
Adaptor mounting hardware is supplied.  
See page 62 for itemized list.



### Adapt D05HE valve to D07 manifold

Valve mtg: UNC 0.25-20 x 0.50 DP or  
Metric M6-1.0mm ISO 6H x [12.7] DP

Adaptor mounting hardware is supplied.  
See page 62 for itemized list.



Specifications, descriptions, and dimensional data are subject to correction or change without notice or incurring obligation.

3

## Ordering Information

