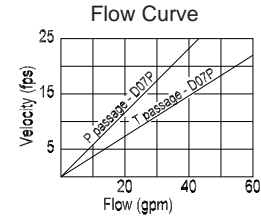
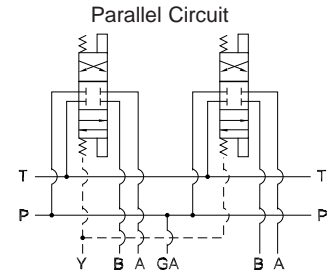
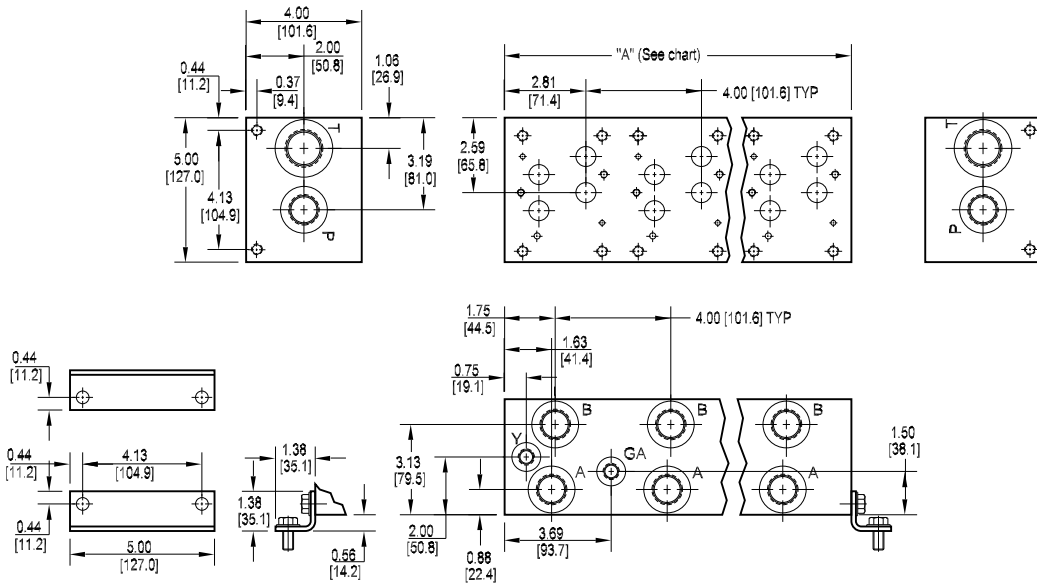




D07 Standard Flow Parallel Circuit Manifold

1



Rated flow Pressure 25 gpm @ 15 fps
 Rated flow Tank 41 gpm @ 15 fps

All mounting hardware is supplied.
 See page 35 for itemized list.

No. of stations	01	02	03	04	05	06	07	08
"A" length (code 4 spa.) inch [mm]	4.00 [101.6]	8.00 [203.2]	12.00 [304.8]	16.00 [406.4]	20.00 [508.0]	24.00 [609.6]	28.00 [711.2]	32.00 [812.8]
apx. weight alum lb [kg]	6 [3]	14 [6]	22 [10]	30 [14]	38 [17]	46 [21]	52 [24]	60 [27]
apx. weight iron lb [kg]	24 [11]	46 [21]	69 [31]	90 [41]	114 [52]	135 [61]	158 [72]	180 [82]

Port code	Valve mtg.	Manifold mtg.
P, S	0.38-16 UNC x 1.00 [25] DP 0.25-20 UNC x 0.75 [16] DP	0.38-16 UNC x 0.75 [19] DP
B, M, T	M10 ISO 6H x 1.00 [25] DP M6 ISO 6H x 0.75 [16] DP	M10 ISO 6H x 0.75 [19] DP

Specifications, descriptions, and dimensional data are subject to correction or change without notice or incurring obligation.

Ordering Information

Material	Valve Pattern	Circuit	No. of Stations	Valve Spacing	Port Threads	Options																																				
Material A Aluminum - 6061-T6 3000 psi • 20.7 MPa D Ductile Iron - D4512 5000 psi • 34.5 MPa	Valve Pattern D07 ISO 4401-07-06 NFPA T3.5.1-D07 See section 9	Circuit P Parallel Manifold Standard Flow	No. of Stations Aluminum 01...08 Available with spacing code 4 Ductile Iron 01...08 Available with spacing code 4	Valve Spacing 4 4.00 inch 101.6 mm	Port Threads <table border="1"> <thead> <tr> <th></th> <th>P,A,B</th> <th>T</th> <th>Y</th> <th>X optional</th> <th>GA</th> </tr> </thead> <tbody> <tr> <td>P</td> <td>NPTF • ANSI B1.20.3</td> <td>0.75</td> <td>1.00</td> <td>0.38</td> <td>0.25</td> </tr> <tr> <td>S</td> <td>SAE • ISO 11926</td> <td>-12</td> <td>-16</td> <td>-6</td> <td>-6</td> </tr> <tr> <td>B</td> <td>BSPP • ISO 1179</td> <td>0.75</td> <td>1.00</td> <td>0.38</td> <td>0.25</td> </tr> <tr> <td>M</td> <td>ISO • ISO 6149</td> <td>M27</td> <td>M33</td> <td>M14</td> <td>M10</td> </tr> <tr> <td>T</td> <td>BSPT • ISO 7</td> <td>0.75</td> <td>1.00</td> <td>0.38</td> <td>0.25</td> </tr> </tbody> </table>		P,A,B	T	Y	X optional	GA	P	NPTF • ANSI B1.20.3	0.75	1.00	0.38	0.25	S	SAE • ISO 11926	-12	-16	-6	-6	B	BSPP • ISO 1179	0.75	1.00	0.38	0.25	M	ISO • ISO 6149	M27	M33	M14	M10	T	BSPT • ISO 7	0.75	1.00	0.38	0.25	Options See next page for available options and ordering codes.
	P,A,B	T	Y	X optional	GA																																					
P	NPTF • ANSI B1.20.3	0.75	1.00	0.38	0.25																																					
S	SAE • ISO 11926	-12	-16	-6	-6																																					
B	BSPP • ISO 1179	0.75	1.00	0.38	0.25																																					
M	ISO • ISO 6149	M27	M33	M14	M10																																					
T	BSPT • ISO 7	0.75	1.00	0.38	0.25																																					

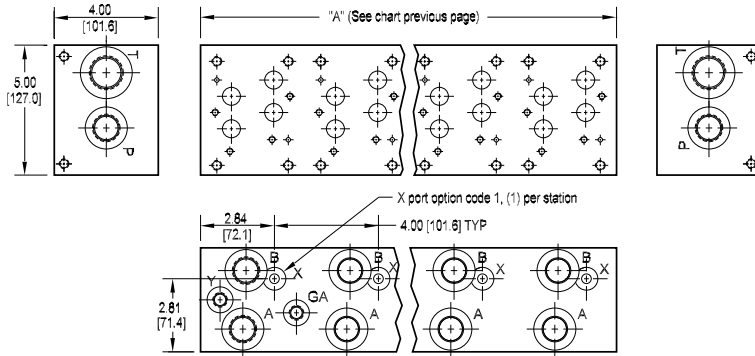


Options - D07 Standard Flow Parallel Manifold

Contact Daman or consult CD-rom CADalog for cavity locations if critical.

Relief valve cavity location when no isolation, or relief-isolation combination L or D is specified.

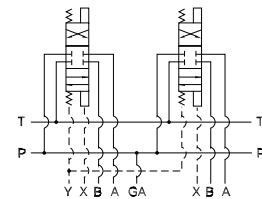
Relief cavity location for relief-isolation combination R or D.



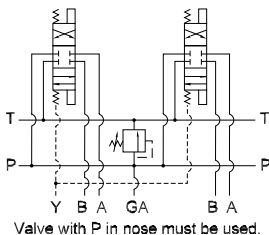
ISOLATIONS		
Ordering code letter:	* Isolation is between stations:	Available # of stations:
A	01 & 02	02-08
B	02 & 03	03-08
C	03 & 04	04-08
D	04 & 05	05-08
E	05 & 06	06-08
F	06 & 07	07-08
G	07 & 08	08

* Stations are numbered left to right.

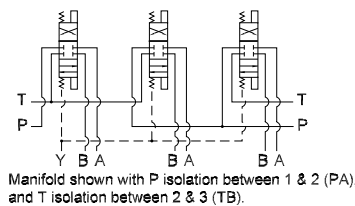
Parallel Circuit with X



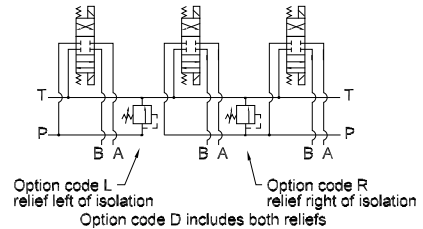
Parallel Circuit with Relief



Parallel Circuit with Isolations



Relief / Isolation Combination



Ordering Information

