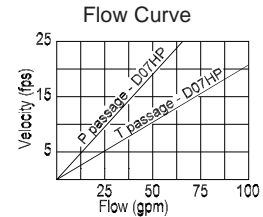
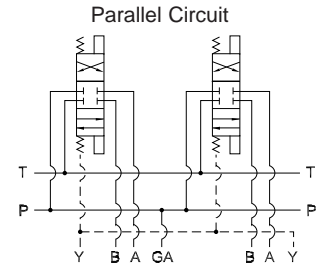
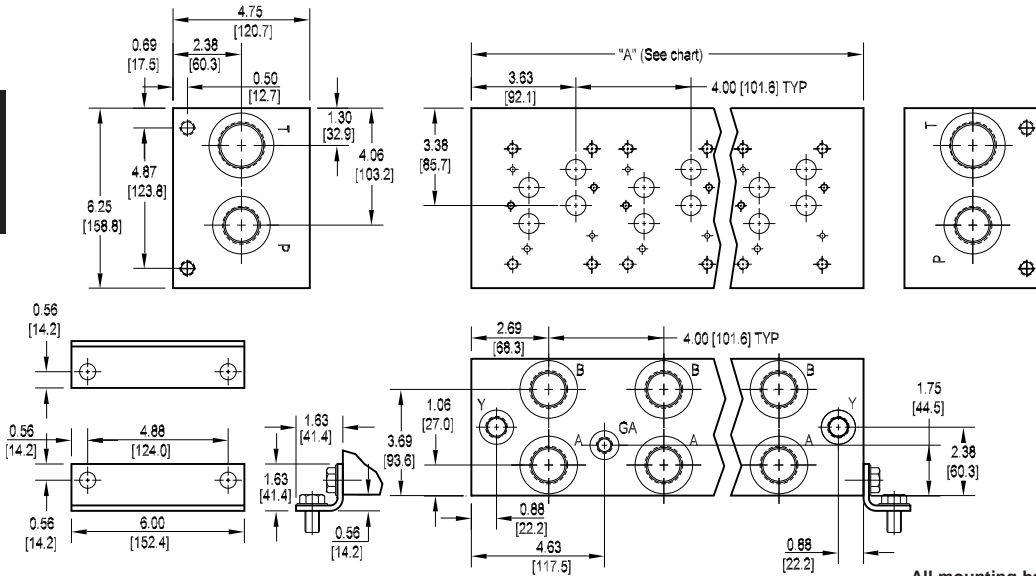




D07 High Flow Parallel Circuit Manifold

1



Rated flow Pressure 41 gpm @ 15 fps
Rated flow Tank 72 gpm @ 15 fps

All mounting hardware is supplied.
See page 36 for itemized list.

No. of stations	* 01	02	03	04	05	06	07	08
"A" length (code 4 spa.) inch [mm]	5.63 [142.9]	9.63 [244.5]	13.63 [346.1]	17.63 [447.7]	21.63 [549.3]	25.63 [650.9]	29.63 [752.5]	33.63 [854.1]
apx. weight alum lb [kg]	17 [8]	29 [13]	41 [18]	52 [24]	64 [29]	76 [35]	88 [40]	100 [45]
apx. weight iron lb [kg]	43 [20]	74 [34]	105 [47]	136 [62]	167 [76]	198 [90]	228 [103]	260 [118]

* Length of 01 station with relief cavity 7.00 [177.8]. Gauge port not available on 01 station.

Port code	Valve mtg.	Manifold mtg.
P, S	0.38-16 UNC x 1.00 [25] DP 0.25-20 UNC x 0.75 [16] DP	0.38-16 UNC x 0.75 [19] DP
B, M, T	M10 ISO 6H x 1.00 [25] DP M6 ISO 6H x 0.75 [16] DP	M10 ISO 6H x 0.75 [19] DP

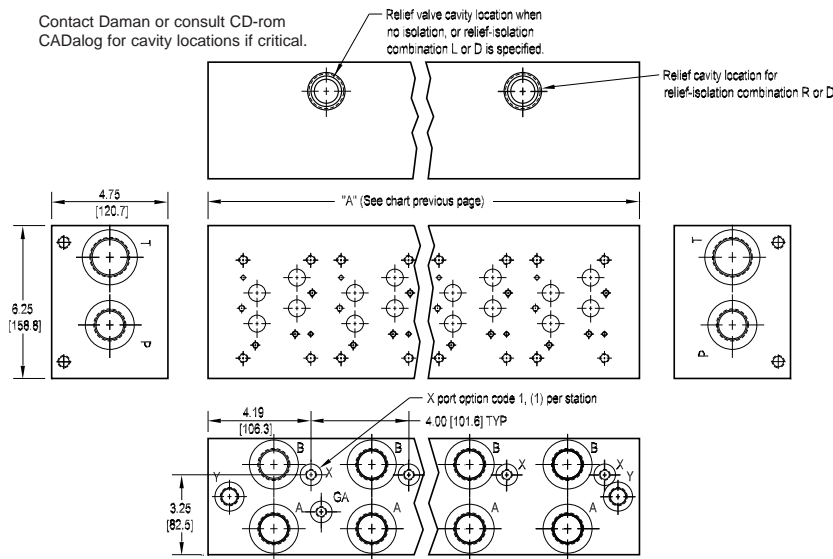
Specifications, descriptions, and dimensional data are subject to correction or change without notice or incurring obligation.

Ordering Information

Material	Valve Pattern	Circuit	No. of Stations	Valve Spacing	Port Threads	Options																																																																																	
<table border="1"> <thead> <tr> <th colspan="2">Material</th> </tr> </thead> <tbody> <tr> <td>A</td> <td>Aluminum - 6061-T6 3000 psi • 20.7 MPa</td> </tr> <tr> <td>D</td> <td>Ductile Iron - D4512 5000 psi • 34.5 MPa</td> </tr> </tbody> </table>	Material		A	Aluminum - 6061-T6 3000 psi • 20.7 MPa	D	Ductile Iron - D4512 5000 psi • 34.5 MPa	<table border="1"> <thead> <tr> <th colspan="2">Valve Pattern</th> </tr> </thead> <tbody> <tr> <td>D07</td> <td>ISO 4401-07-06 NFFPA T3.5.1-D07 See section 9</td> </tr> </tbody> </table>	Valve Pattern		D07	ISO 4401-07-06 NFFPA T3.5.1-D07 See section 9	<table border="1"> <thead> <tr> <th colspan="2">Circuit</th> </tr> </thead> <tbody> <tr> <td>HP</td> <td>Parallel Circuit High Flow</td> </tr> </tbody> </table>	Circuit		HP	Parallel Circuit High Flow	<table border="1"> <thead> <tr> <th colspan="2">No. of Stations</th> </tr> </thead> <tbody> <tr> <td colspan="2">Aluminum</td> </tr> <tr> <td>01...08</td> <td>Available with spacing code 4</td> </tr> <tr> <td colspan="2">Ductile Iron</td> </tr> <tr> <td>01...08</td> <td>Available with spacing code 4</td> </tr> </tbody> </table>	No. of Stations		Aluminum		01...08	Available with spacing code 4	Ductile Iron		01...08	Available with spacing code 4	<table border="1"> <thead> <tr> <th colspan="2">Valve Spacing</th> </tr> </thead> <tbody> <tr> <td>4</td> <td>4.00 inch 101.6 mm</td> </tr> </tbody> </table>	Valve Spacing		4	4.00 inch 101.6 mm	<table border="1"> <thead> <tr> <th colspan="7">Port Threads</th> </tr> <tr> <th></th> <th>P,A,B</th> <th>T</th> <th>Y</th> <th>X optional</th> <th>GA</th> <th></th> </tr> </thead> <tbody> <tr> <td>P</td> <td>NPTF • ANSI B1.20.3</td> <td>1.00</td> <td>1.25</td> <td>0.50</td> <td>0.25</td> <td>0.25</td> </tr> <tr> <td>S</td> <td>SAE • ISO 11926</td> <td>-16</td> <td>-20</td> <td>-8</td> <td>-4</td> <td>-6</td> </tr> <tr> <td>B</td> <td>BSPP • ISO 1179</td> <td>1.00</td> <td>1.25</td> <td>0.50</td> <td>0.25</td> <td>none</td> </tr> <tr> <td>M</td> <td>ISO • ISO 6149</td> <td>M33</td> <td>M42</td> <td>M16</td> <td>M10</td> <td>none</td> </tr> <tr> <td>T</td> <td>BSPT • ISO 7</td> <td>1.00</td> <td>1.25</td> <td>0.50</td> <td>0.25</td> <td>none</td> </tr> </tbody> </table>	Port Threads								P,A,B	T	Y	X optional	GA		P	NPTF • ANSI B1.20.3	1.00	1.25	0.50	0.25	0.25	S	SAE • ISO 11926	-16	-20	-8	-4	-6	B	BSPP • ISO 1179	1.00	1.25	0.50	0.25	none	M	ISO • ISO 6149	M33	M42	M16	M10	none	T	BSPT • ISO 7	1.00	1.25	0.50	0.25	none	<table border="1"> <thead> <tr> <th colspan="2">Options</th> </tr> </thead> <tbody> <tr> <td colspan="2">See next page for available options and ordering codes.</td> </tr> </tbody> </table>	Options		See next page for available options and ordering codes.	
Material																																																																																							
A	Aluminum - 6061-T6 3000 psi • 20.7 MPa																																																																																						
D	Ductile Iron - D4512 5000 psi • 34.5 MPa																																																																																						
Valve Pattern																																																																																							
D07	ISO 4401-07-06 NFFPA T3.5.1-D07 See section 9																																																																																						
Circuit																																																																																							
HP	Parallel Circuit High Flow																																																																																						
No. of Stations																																																																																							
Aluminum																																																																																							
01...08	Available with spacing code 4																																																																																						
Ductile Iron																																																																																							
01...08	Available with spacing code 4																																																																																						
Valve Spacing																																																																																							
4	4.00 inch 101.6 mm																																																																																						
Port Threads																																																																																							
	P,A,B	T	Y	X optional	GA																																																																																		
P	NPTF • ANSI B1.20.3	1.00	1.25	0.50	0.25	0.25																																																																																	
S	SAE • ISO 11926	-16	-20	-8	-4	-6																																																																																	
B	BSPP • ISO 1179	1.00	1.25	0.50	0.25	none																																																																																	
M	ISO • ISO 6149	M33	M42	M16	M10	none																																																																																	
T	BSPT • ISO 7	1.00	1.25	0.50	0.25	none																																																																																	
Options																																																																																							
See next page for available options and ordering codes.																																																																																							



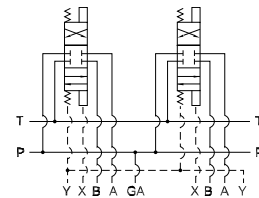
Options - D07 High Flow Parallel Manifold



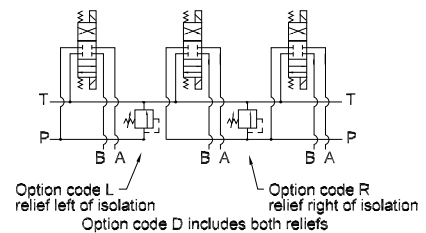
ISOLATIONS		
Daman isolation options allow a manifold to have two independent pressure and/or tank ports. Isolations are drilled rather than plugged to ensure a leakproof and failproof isolation.		
Ordering code letter:	* Isolation is between stations:	Available # of stations:
A	01 & 02	02-08
B	02 & 03	03-08
C	03 & 04	04-08
D	04 & 05	05-08
E	05 & 06	06-08
F	06 & 07	07-08
G	07 & 08	08

* Stations are numbered left to right.

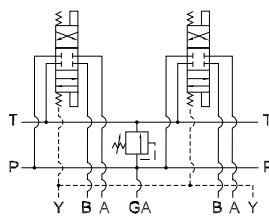
Parallel circuit with X



Relief / Isolation Combination

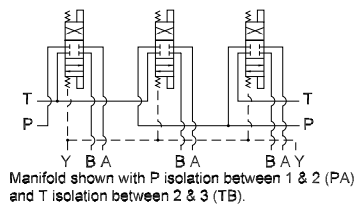


Parallel Circuit with Relief



Valve with P in nose must be used.

Parallel Circuit with Isolations



Ordering Information

