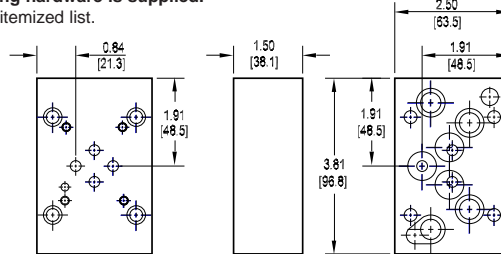
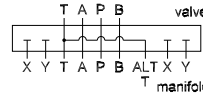




Valve Adaptors for D05 Manifolds with Pilot Ports

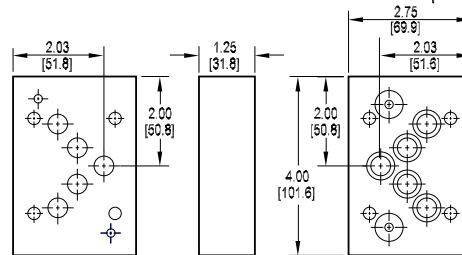
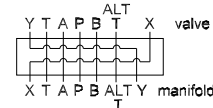
Adapt D03 valve to D05H manifold

Valve mtg: #10-24 UNC x 0.50 DP or
Metric M5-0.8mm ISO 6H x [12.7] DP
Adaptor mounting hardware is supplied.
See page 62 for itemized list.



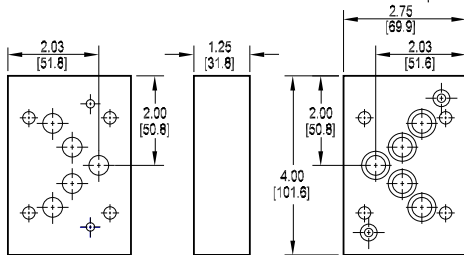
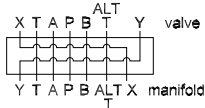
Adapt D05H valve to D05HE manifold

Adaptor interface seal kit is supplied.
See page 62 for itemized list.



Adapt D05HE valve to D05H manifold

Adaptor interface seal kit is supplied.
See page 62 for itemized list.



Specifications, descriptions, and dimensional data are subject to correction or change without notice or incurring obligation.

Ordering Information

