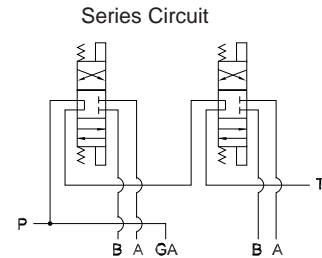
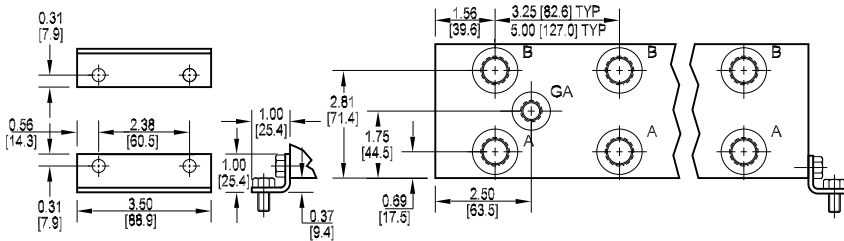
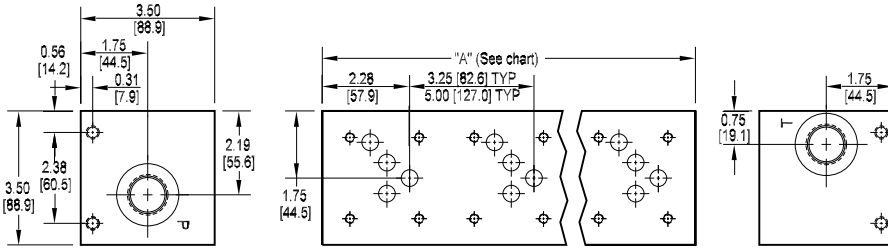




D05 Standard Flow Series Circuit Manifold



No. of stations	02	03	04
"A" length (code 3 spa.) inch [mm]	6.50 [165.1]	9.75 [247.7]	13.00 [330.2]
apx. weight alum lb [kg]	8 [4]	11 [5]	14 [7]
apx. weight iron lb [kg]	17 [8]	26 [12]	34 [15]
"A" length (code 5 spa.) inch [mm]	8.25 [209.6]	13.25 [336.6]	18.25 [463.6]
apx. weight alum lb [kg]	9 [4]	15 [7]	20 [9]
apx. weight iron lb [kg]	22 [10]	36 [16]	49 [22]

All mounting hardware is supplied.
See page 35 for itemized list.

Port code	Valve mtg.	Manifold mtg.
P, S	0.25-20 UNC x 0.75 [19] DP	0.31-18 UNC x 0.44 [11.1] DP
B, M, T	M6 ISO 6H x 0.75 [19] DP	M8 ISO 6H x 0.44 [11.1] DP

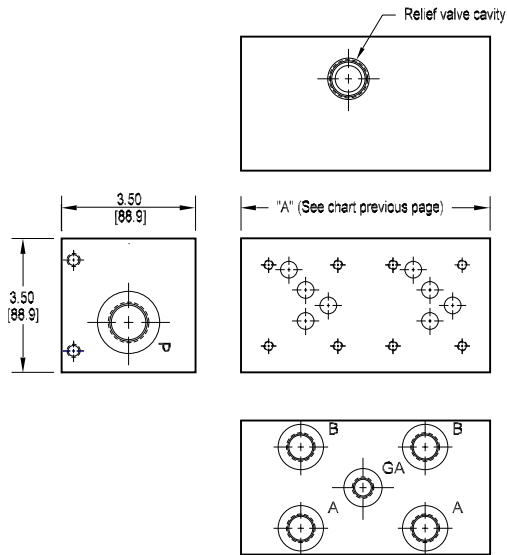
Specifications, descriptions, and dimensional data are subject to correction or change without notice or incurring obligation.

Ordering Information

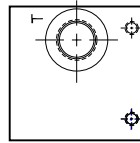
Material	Valve Pattern	Circuit	No. of Stations	Valve Spacing	Port Threads	Options																																																																		
<table border="1"> <thead> <tr> <th colspan="2">Material</th> </tr> </thead> <tbody> <tr> <td>A</td> <td>Aluminum - 6061-T6 3000 psi • 20.7 MPa</td> </tr> <tr> <td>D</td> <td>Ductile Iron - D4512 5000 psi • 34.5 MPa</td> </tr> </tbody> </table>	Material		A	Aluminum - 6061-T6 3000 psi • 20.7 MPa	D	Ductile Iron - D4512 5000 psi • 34.5 MPa	<table border="1"> <thead> <tr> <th colspan="2">Valve Pattern</th> </tr> </thead> <tbody> <tr> <td>D05</td> <td>ISO-4401-05-04 NFFPA T3.5.1-D05 See section 9</td> </tr> </tbody> </table>	Valve Pattern		D05	ISO-4401-05-04 NFFPA T3.5.1-D05 See section 9	<table border="1"> <thead> <tr> <th colspan="2">Circuit</th> </tr> </thead> <tbody> <tr> <td>S</td> <td>Series Circuit Standard Flow</td> </tr> </tbody> </table>	Circuit		S	Series Circuit Standard Flow	<table border="1"> <thead> <tr> <th colspan="2">No. of Stations</th> </tr> </thead> <tbody> <tr> <td colspan="2">Aluminum</td> </tr> <tr> <td>02...04</td> <td>Available with spacing code 3</td> </tr> <tr> <td>02...04</td> <td>Available with spacing code 5</td> </tr> <tr> <td colspan="2">Ductile Iron</td> </tr> <tr> <td>02...04</td> <td>Available with spacing code 3</td> </tr> <tr> <td>02...04</td> <td>Available with spacing code 5</td> </tr> </tbody> </table>	No. of Stations		Aluminum		02...04	Available with spacing code 3	02...04	Available with spacing code 5	Ductile Iron		02...04	Available with spacing code 3	02...04	Available with spacing code 5	<table border="1"> <thead> <tr> <th colspan="2">Valve Spacing</th> </tr> </thead> <tbody> <tr> <td>3</td> <td>3.25 inch 82.6 mm</td> </tr> <tr> <td>5</td> <td>5.00 inch 127.0 mm</td> </tr> </tbody> </table>	Valve Spacing		3	3.25 inch 82.6 mm	5	5.00 inch 127.0 mm	<table border="1"> <thead> <tr> <th colspan="4">Port Threads</th> </tr> </thead> <tbody> <tr> <th>P</th> <th>P & T</th> <th>A & B</th> <th>GA</th> </tr> <tr> <td>P</td> <td>NPTF • ANSI B1.20.3</td> <td>0.75</td> <td>0.50</td> </tr> <tr> <td>S</td> <td>SAE • ISO 11926</td> <td>-12</td> <td>-8</td> </tr> <tr> <td>B</td> <td>BSPP • ISO 1179</td> <td>0.75</td> <td>0.50</td> </tr> <tr> <td>M</td> <td>ISO • ISO 6149</td> <td>M27</td> <td>M18</td> </tr> <tr> <td>T</td> <td>BSPT • ISO 7</td> <td>0.75</td> <td>0.50</td> </tr> </tbody> </table>	Port Threads				P	P & T	A & B	GA	P	NPTF • ANSI B1.20.3	0.75	0.50	S	SAE • ISO 11926	-12	-8	B	BSPP • ISO 1179	0.75	0.50	M	ISO • ISO 6149	M27	M18	T	BSPT • ISO 7	0.75	0.50	<table border="1"> <thead> <tr> <th colspan="2">Options</th> </tr> </thead> <tbody> <tr> <td colspan="2">See next page for available options and ordering codes.</td> </tr> </tbody> </table>	Options		See next page for available options and ordering codes.	
Material																																																																								
A	Aluminum - 6061-T6 3000 psi • 20.7 MPa																																																																							
D	Ductile Iron - D4512 5000 psi • 34.5 MPa																																																																							
Valve Pattern																																																																								
D05	ISO-4401-05-04 NFFPA T3.5.1-D05 See section 9																																																																							
Circuit																																																																								
S	Series Circuit Standard Flow																																																																							
No. of Stations																																																																								
Aluminum																																																																								
02...04	Available with spacing code 3																																																																							
02...04	Available with spacing code 5																																																																							
Ductile Iron																																																																								
02...04	Available with spacing code 3																																																																							
02...04	Available with spacing code 5																																																																							
Valve Spacing																																																																								
3	3.25 inch 82.6 mm																																																																							
5	5.00 inch 127.0 mm																																																																							
Port Threads																																																																								
P	P & T	A & B	GA																																																																					
P	NPTF • ANSI B1.20.3	0.75	0.50																																																																					
S	SAE • ISO 11926	-12	-8																																																																					
B	BSPP • ISO 1179	0.75	0.50																																																																					
M	ISO • ISO 6149	M27	M18																																																																					
T	BSPT • ISO 7	0.75	0.50																																																																					
Options																																																																								
See next page for available options and ordering codes.																																																																								



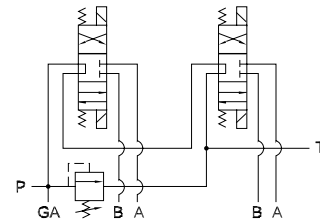
Options - D05 Standard Flow Series Manifold



Available in two station manifold only - 3.25 or 5.00 spacing. Valve with P in nose must be used. Contact Daman or consult CD-rom CADalog for cavity locations if critical.



Series Circuit with Relief



1

Ordering Information



Relief Cavity	
Omit if relief not required Available in two station only.	
C	Common cavity C-10-2 (P in nose)
S	Sun Cavity T-3A (P in nose) See section 9 for valves.