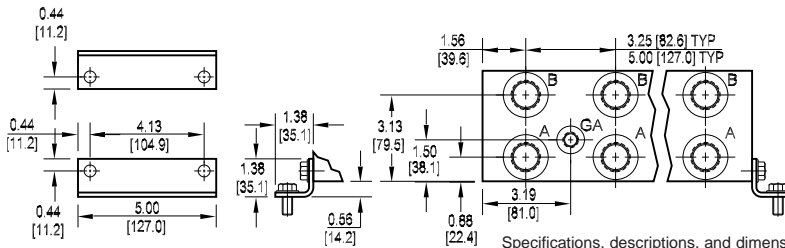
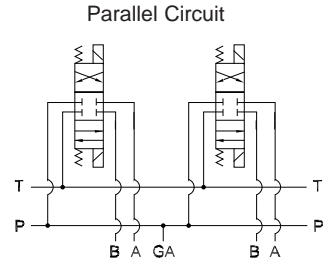
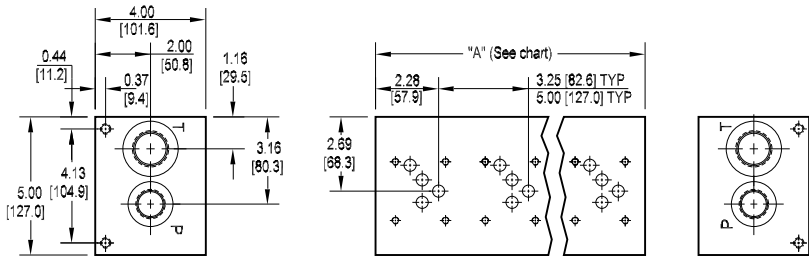
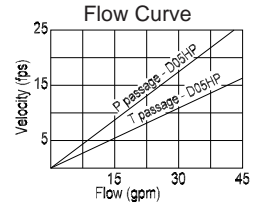




D05 High Flow Parallel Circuit Manifold



All mounting hardware is supplied. See page 35 for itemized list.



Rated flow Pressure 25 gpm @ 15 fps
Rated flow Tank 41 gpm @ 15 fps

Specifications, descriptions, and dimensional data are subject to correction or change without notice or incurring obligation.

No. of stations	* 01	02	03	04	05	06	07	08	09	10	11	12	13	14	15	16	17	18	19	20	21
"A" length (code 3 spa.) inch [mm]	3.25 [82.6]	6.50 [165.1]	9.75 [247.7]	13.00 [330.2]	16.25 [412.8]	19.50 [495.3]	22.75 [577.9]	26.00 [660.4]	29.25 [743.0]	32.50 [825.5]	35.75 [908.1]	39.00 [990.6]	42.25 [1073.2]	45.50 [1155.7]	48.75 [1238.3]	52.00 [1320.8]	55.25 [1403.4]	58.50 [1485.9]	61.75 [1568.5]	65.00 [1651.0]	68.25 [1733.6]
apx. weight alum lb [kg]	7 [3]	12 [5]	17 [8]	22 [10]	27 [12]	33 [15]	38 [17]	43 [20]	48 [22]	53 [24]	58 [26]	63 [29]	68 [31]	74 [34]	79 [36]	84 [38]	89 [40]	94 [43]	99 [45]	104 [47]	110 [50]
apx. weight iron lb [kg]	19 [9]	38 [17]	57 [26]	75 [34]	85 [39]	113 [51]	132 [60]	151 [69]	170 [77]	189 [86]	208 [94]	226 [103]	--	--	--	--	--	--	--	--	--
"A" length (code 5 spa.) inch [mm]	--	8.25 [209.6]	13.25 [336.6]	18.25 [463.6]	23.25 [590.6]	28.25 [717.6]	33.25 [844.6]	38.25 [971.6]	43.25 [1098.6]	48.25 [1225.6]	53.25 [1352.6]	58.25 [1479.6]	63.25 [1606.6]	68.25 [1733.6]							
apx. weight alum lb [kg]	--	18 [8]	26 [12]	33 [15]	41 [19]	48 [22]	56 [25]	63 [29]	71 [32]	79 [36]	87 [39]	95 [43]	103 [47]	111 [50]							
apx. weight iron lb [kg]	--	48 [22]	77 [35]	106 [48]	135 [61]	164 [74]	188 [85]	222 [101]	--	--	--	--	--	--							
		Port code		Valve mtg.		Manifold mtg.															
		P, S		0.25-20 UNC x 0.75 [19] DP		0.38-16 UNC x 0.75 [19] DP															
		B, M, T		M6 ISO 6H x 0.75 [19] DP		M10 ISO 6H x 0.75 [19] DP															

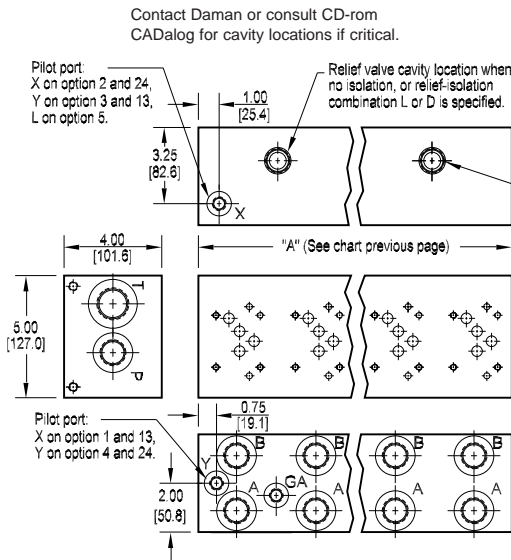
* Length of 01 station with relief cavity is 4.50 [114.3]. Gauge port not available on 01 station.

Ordering Information

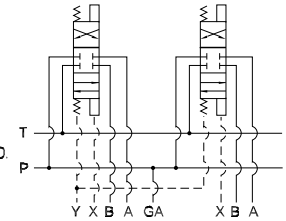
Material	Valve Pattern	Circuit	No. of Stations	Valve Spacing	Port Threads	Options
Material A Aluminum - 6061-T6 3000 psi • 20.7 MPa D Ductile Iron - D4512 5000 psi • 34.5 MPa	Valve Pattern D05 ISO 4401-05-04 NFPA T3.5.1-D05 See section 9	Circuit HP Parallel Circuit High Flow	No. of Stations Aluminum 01...21 Available with spacing code 3 02...14 Available with spacing code 5 Ductile Iron 01...12 Available with spacing code 3 02...08 Available with spacing code 5	Valve Spacing 3 3.25 inch 82.6 mm 5 5.00 inch 127.0 mm	Port Threads P NPTF • ANSI B1.20.3 S SAE • ISO 11926 B BSPP • ISO 1179 M ISO • ISO 6149 T BSPT • ISO 7	Options See next page for available options and ordering codes.



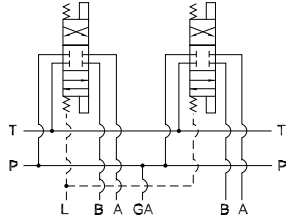
Options - D05 High Flow Parallel Manifold



Parallel Circuit with X & Y



Parallel Circuit with L

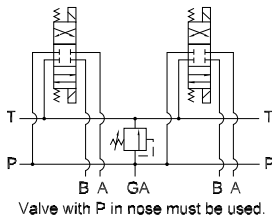


ISOLATIONS

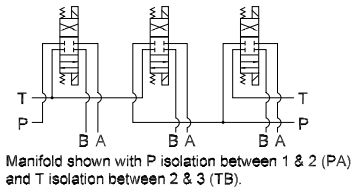
Daman isolation options allow a manifold to have two independent pressure and/or tank ports. Isolations are drilled rather than plugged to ensure a leakproof and failproof isolation.

Ordering code letter:	* Isolation is between stations:	Available # of stations:
3.25 [82.6] spacing		
A	01 & 02	02-10
B	02 & 03	03-11
C	03 & 04	04-12
D	04 & 05	05-13
E	05 & 06	06-14
F	06 & 07	07-15
G	07 & 08	08-16
H	08 & 09	09-17
J	09 & 10	10-18
5.00 [127.0] spacing		
A	01 & 02	02-07
B	02 & 03	03-08
C	03 & 04	04-09
D	04 & 05	05-10
E	05 & 06	06-11
F	06 & 07	07-12

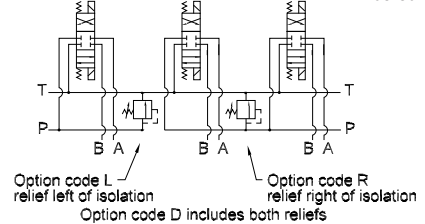
Parallel Circuit with Relief



Parallel Circuit with Isolations



Relief / Isolation Combination



Ordering Information

