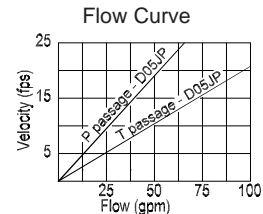
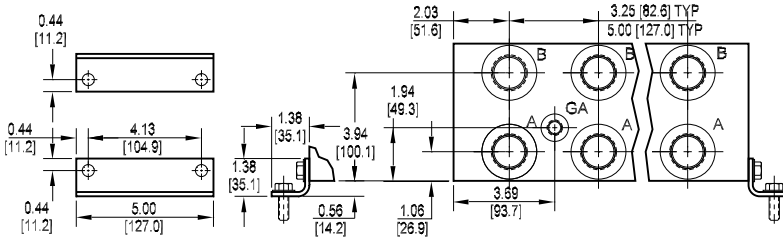
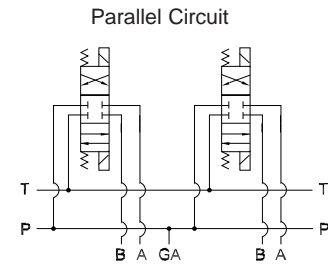
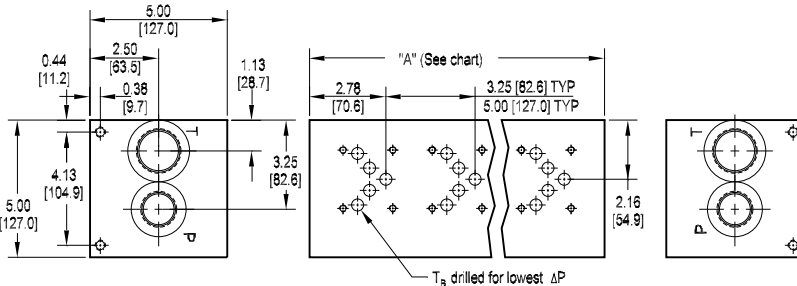




D05 Extra High Flow Parallel Circuit Manifold



Rated flow Pressure 41 gpm @ 15 fps
Rated flow Tank 72 gpm @ 15 fps

No. of stations	* 01	02	03	04	05	06	07	08	09	10
"A" length (code 3 spa.) inch [mm]	4.25 [108.0]	7.50 [190.5]	10.75 [273.1]	14.00 [355.6]	17.25 [438.2]	20.50 [520.7]	23.75 [603.3]	27.00 [685.8]	30.25 [768.4]	33.50 [850.9]
apx. weight alum lb [kg]	10 [5]	18 [8]	26 [12]	35 [16]	43 [20]	51 [23]	59 [27]	67 [30]	75 [34]	83 [38]
apx. weight iron lb [kg]	27 [12]	48 [22]	69 [31]	91 [41]	112 [51]	133 [60]	154 [70]	175 [79]	196 [89]	217 [99]
"A" length (code 5 spa.) inch [mm]	--	9.25 [235.0]	14.25 [362.0]	19.25 [489.0]	24.25 [616.0]	29.25 [743.0]				
apx. weight alum lb [kg]	--	23 [10]	35 [16]	48 [22]	60 [27]	73 [33]				
apx. weight iron lb [kg]	--	60 [27.2]	92 [41.8]	125 [56.8]	157 [71.3]	190 [86.3]				

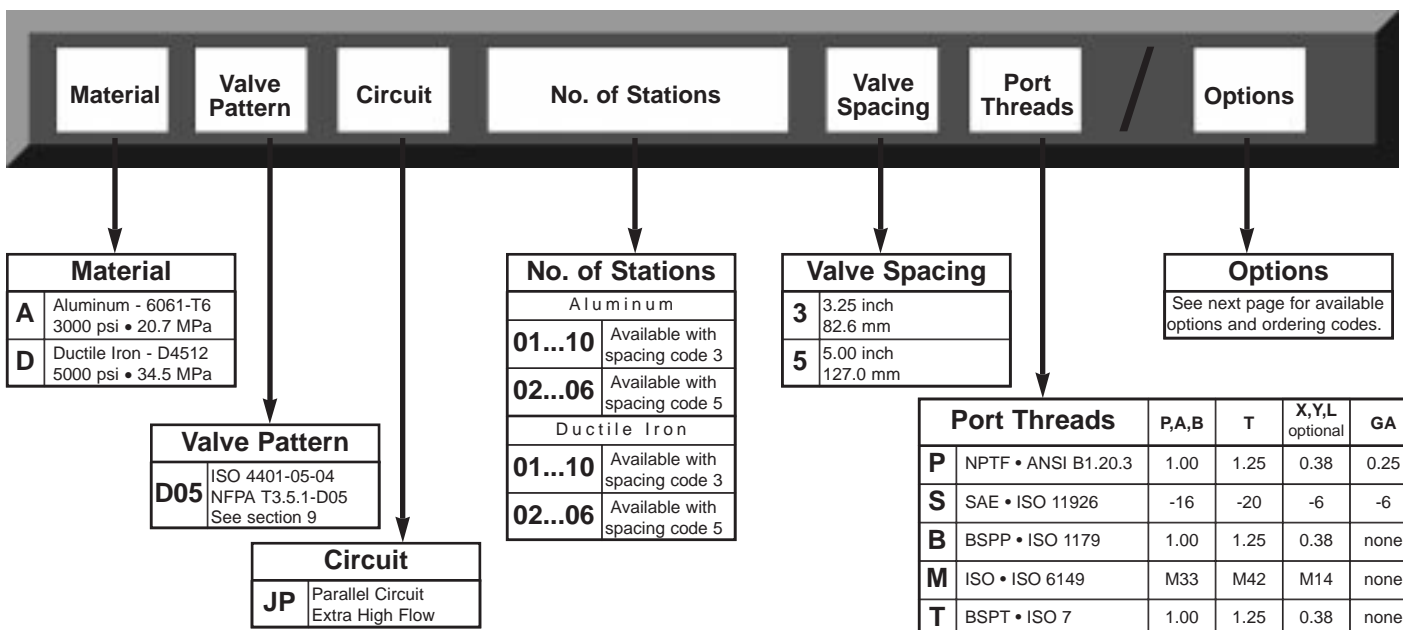
All mounting hardware is supplied.
See page 35 for itemized list.

Port code	Valve mtg.	Manifold mtg.
P, S	0.25-20 UNC x 0.75 [19] DP	0.38-16 UNC x 0.75 [19] DP
B, M, T	M6 ISO 6H x 0.75 [19] DP	M10 ISO 6H x 0.75 [19] DP

Specifications, descriptions, and dimensional data are subject to correction or change without notice or incurring obligation.

* Length of 01 station with relief cavity is 5.50 [139.7]. Gauge port not available on 01 station.

Ordering Information





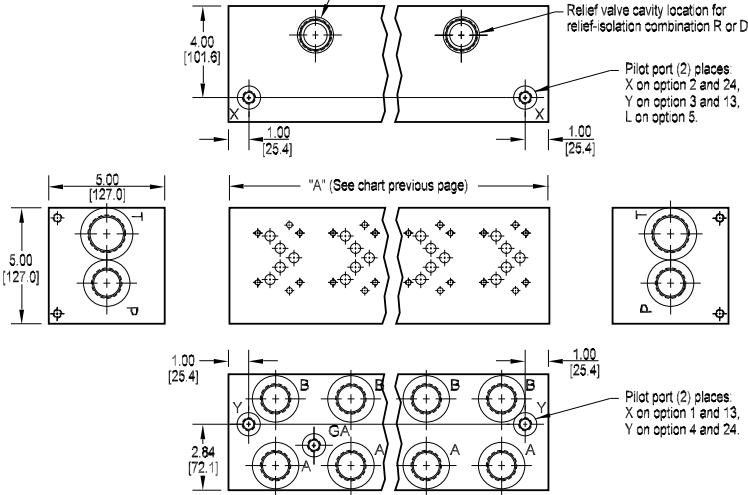
Options - D05 Extra High Flow Parallel Manifold

Contact Daman or consult CD-rom CADalog for cavity locations if critical.

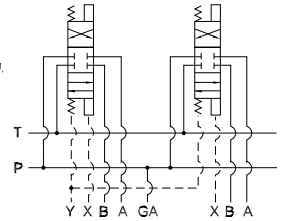
Relief valve cavity location when no isolation, or relief-isolation combination L or D is specified.

Relief valve cavity location for relief-isolation combination R or D.

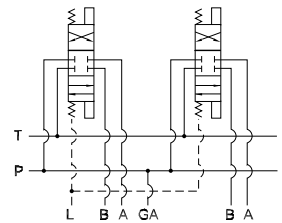
Pilot port (2) places:
X on option 2 and 24,
Y on option 3 and 13,
L on option 5.



Parallel Circuit with X & Y



Parallel Circuit with L



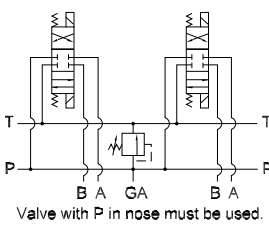
ISOLATIONS

Daman isolation options allow a manifold to have two independent pressure and/or tank ports. Isolations are drilled rather than plugged to ensure a leakproof and failproof isolation.

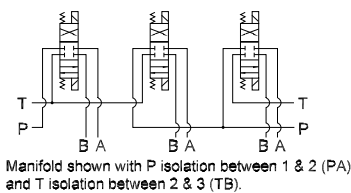
Ordering code letter:	* Isolation is between stations:	Available # of stations:
3.25 [82.6] spacing		
A	01 & 02	02-10
B	02 & 03	03-10
C	03 & 04	04-10
D	04 & 05	05-10
E	05 & 06	06-10
F	06 & 07	07-10
G	07 & 08	08-10
H	08 & 09	09-10
J	09 & 10	10
5.00 [127.0] spacing		
A	01 & 02	02-06
B	02 & 03	03-06
C	03 & 04	04-06
D	04 & 05	05-06
E	05 & 06	06

* Stations are numbered left to right.

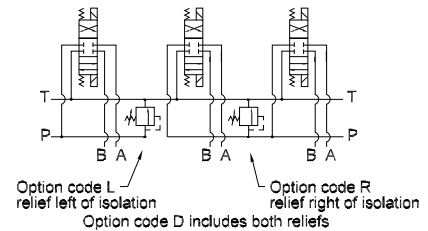
Parallel Circuit with Relief



Parallel Circuit with Isolations



Relief / Isolation Combination



Ordering Information

Pilot Ports	Relief Cavity	Pressure Isolation	Tank Isolation	Relief & Isolation																																																				
<table border="1" style="width:100%; border-collapse: collapse;"> <thead> <tr> <th colspan="2">Pilot Ports</th> </tr> </thead> <tbody> <tr> <td colspan="2">Omit if pilot ports not required</td> </tr> <tr> <td>1</td> <td>X port (USA std) NFFPA T3.5.1-D05 Alt-B</td> </tr> <tr> <td>3</td> <td>Y port (USA std) NFFPA T3.5.1-D05 Alt-B</td> </tr> <tr> <td>13</td> <td>X & Y ports (USA std) NFFPA T3.5.1-D05 Alt-B</td> </tr> <tr> <td>2</td> <td>X port ISO 4401-05-05 NFFPA T3.5.1-D05 Alt-A</td> </tr> <tr> <td>4</td> <td>Y port ISO 4401-05-05 NFFPA T3.5.1-D05 Alt-A</td> </tr> <tr> <td>24</td> <td>X & Y ports ISO 4401-05-05 NFFPA T3.5.1-D05 Alt-A</td> </tr> <tr> <td>5</td> <td>L ports Proportional valves</td> </tr> </tbody> </table>	Pilot Ports		Omit if pilot ports not required		1	X port (USA std) NFFPA T3.5.1-D05 Alt-B	3	Y port (USA std) NFFPA T3.5.1-D05 Alt-B	13	X & Y ports (USA std) NFFPA T3.5.1-D05 Alt-B	2	X port ISO 4401-05-05 NFFPA T3.5.1-D05 Alt-A	4	Y port ISO 4401-05-05 NFFPA T3.5.1-D05 Alt-A	24	X & Y ports ISO 4401-05-05 NFFPA T3.5.1-D05 Alt-A	5	L ports Proportional valves	<table border="1" style="width:100%; border-collapse: collapse;"> <thead> <tr> <th colspan="2">Relief Cavity</th> </tr> </thead> <tbody> <tr> <td colspan="2">Omit if relief not required</td> </tr> <tr> <td>C</td> <td>Common cavity C-16-2 (P in nose)</td> </tr> <tr> <td>S</td> <td>Sun Cavity T-16A (P in nose) See section 9 for valves.</td> </tr> </tbody> </table>	Relief Cavity		Omit if relief not required		C	Common cavity C-16-2 (P in nose)	S	Sun Cavity T-16A (P in nose) See section 9 for valves.	<table border="1" style="width:100%; border-collapse: collapse;"> <thead> <tr> <th colspan="2">Pressure Isolation</th> </tr> </thead> <tbody> <tr> <td colspan="2">Omit if P isolation not required</td> </tr> <tr> <td>PA...PJ</td> <td>Available with spacing code 3</td> </tr> <tr> <td>PA...PE</td> <td>Available with spacing code 5</td> </tr> </tbody> </table>	Pressure Isolation		Omit if P isolation not required		PA...PJ	Available with spacing code 3	PA...PE	Available with spacing code 5	<table border="1" style="width:100%; border-collapse: collapse;"> <thead> <tr> <th colspan="2">Tank Isolation</th> </tr> </thead> <tbody> <tr> <td colspan="2">Omit if T isolation not required</td> </tr> <tr> <td>TA...TJ</td> <td>Available with spacing code 3</td> </tr> <tr> <td>TA...TE</td> <td>Available with spacing code 5</td> </tr> </tbody> </table>	Tank Isolation		Omit if T isolation not required		TA...TJ	Available with spacing code 3	TA...TE	Available with spacing code 5	<table border="1" style="width:100%; border-collapse: collapse;"> <thead> <tr> <th colspan="2">Relief / Isolation Combination</th> </tr> </thead> <tbody> <tr> <td colspan="2">Specify when using both relief and isolation options.</td> </tr> <tr> <td>L</td> <td>Relief cavity is located left of the isolation.</td> </tr> <tr> <td>R</td> <td>Relief cavity is located right of the isolation.</td> </tr> <tr> <td>D</td> <td>Two relief cavities, one each side of isolation.</td> </tr> </tbody> </table>	Relief / Isolation Combination		Specify when using both relief and isolation options.		L	Relief cavity is located left of the isolation.	R	Relief cavity is located right of the isolation.	D	Two relief cavities, one each side of isolation.
Pilot Ports																																																								
Omit if pilot ports not required																																																								
1	X port (USA std) NFFPA T3.5.1-D05 Alt-B																																																							
3	Y port (USA std) NFFPA T3.5.1-D05 Alt-B																																																							
13	X & Y ports (USA std) NFFPA T3.5.1-D05 Alt-B																																																							
2	X port ISO 4401-05-05 NFFPA T3.5.1-D05 Alt-A																																																							
4	Y port ISO 4401-05-05 NFFPA T3.5.1-D05 Alt-A																																																							
24	X & Y ports ISO 4401-05-05 NFFPA T3.5.1-D05 Alt-A																																																							
5	L ports Proportional valves																																																							
Relief Cavity																																																								
Omit if relief not required																																																								
C	Common cavity C-16-2 (P in nose)																																																							
S	Sun Cavity T-16A (P in nose) See section 9 for valves.																																																							
Pressure Isolation																																																								
Omit if P isolation not required																																																								
PA...PJ	Available with spacing code 3																																																							
PA...PE	Available with spacing code 5																																																							
Tank Isolation																																																								
Omit if T isolation not required																																																								
TA...TJ	Available with spacing code 3																																																							
TA...TE	Available with spacing code 5																																																							
Relief / Isolation Combination																																																								
Specify when using both relief and isolation options.																																																								
L	Relief cavity is located left of the isolation.																																																							
R	Relief cavity is located right of the isolation.																																																							
D	Two relief cavities, one each side of isolation.																																																							