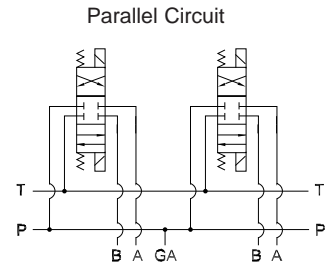
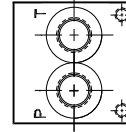
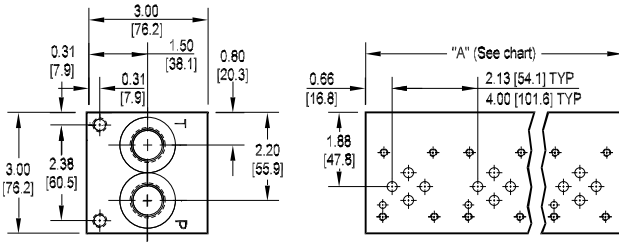
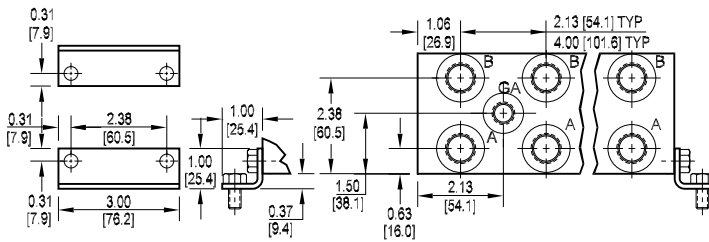




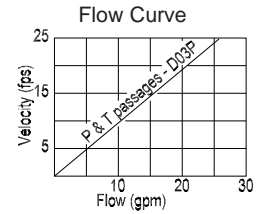
## D03 Standard Flow Parallel Circuit Manifold



Parallel Circuit



All mounting hardware is supplied.  
See page 35 for itemized list.



Rated flow 14 gpm @ 15 fps

No. of stations	* 01	02	03	04	05	06	07	08	09	10	11	12	13	14	15	16
"A" length (code 2 spa.) inch [mm]	2.13 [54.0]	4.25 [108.0]	6.38 [162.1]	8.50 [215.9]	10.63 [270.0]	12.75 [323.9]	14.88 [378.0]	17.00 [431.8]	19.13 [485.9]	21.25 [539.8]	23.38 [593.9]	25.50 [647.7]	27.63 [701.8]	29.75 [755.7]	31.88 [809.8]	34.00 [863.6]
apx. weight alum lb [kg]	3 [1]	4 [2]	6 [3]	8 [4]	9 [4]	11 [5]	12 [5]	14 [6]	16 [7]	18 [8]	20 [9]	21 [10]	22 [10]	24 [11]	26 [12]	27 [12]
apx. weight iron lb [kg]	5 [2]	9 [4]	13 [6]	17 [8]	21 [10]	26 [12]	30 [14]	34 [15]	38 [17]	42 [19]	47 [21]	51 [23]	55 [25]	59 [27]	63 [29]	68 [31]
"A" length (code 4 spa.) inch [mm]	--	6.13 [155.7]	10.13 [257.3]	14.13 [358.9]	18.13 [460.5]	22.13 [562.1]	26.13 [663.7]	30.13 [765.3]								
apx. weight alum lb [kg]	--	6 [3]	9 [4]	12 [5]	15 [7]	19 [9]	22 [10]	25 [11]								
apx. weight iron lb [kg]	--	12 [5]	20 [9]	28 [13]	36 [16]	45 [20]	53 [24]	57 [26]								

Port code	Valve mtg.	Manifold mtg.
P, S	#10-24 UNC x 0.63 [16] DP	0.31-18 UNC x 0.44 [11.1] DP
B, M, T	M5 ISO 6H x 0.63 [16] DP	M8 ISO 6H x 0.44 [11.1] DP

\* Length of 01 station with relief cavity is 3.00 [76.2]. Gauge port not available on 01 station.

Specifications, descriptions, and dimensional data are subject to correction or change without notice or incurring obligation.

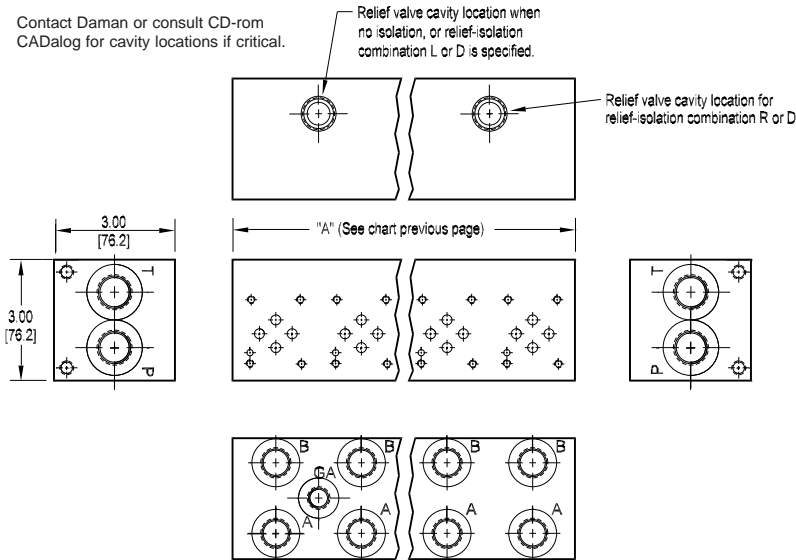
## Ordering Information

Material	Valve Pattern	Circuit	No. of Stations	Valve Spacing	Port Threads	Options																																																														
<table border="1"> <thead> <tr> <th colspan="2">Material</th> </tr> </thead> <tbody> <tr> <td><b>A</b></td> <td>Aluminum - 6061-T6 3000 psi • 20.7 MPa</td> </tr> <tr> <td><b>D</b></td> <td>Ductile Iron - D4512 5000 psi • 34.5 MPa</td> </tr> </tbody> </table>	Material		<b>A</b>	Aluminum - 6061-T6 3000 psi • 20.7 MPa	<b>D</b>	Ductile Iron - D4512 5000 psi • 34.5 MPa	<table border="1"> <thead> <tr> <th colspan="2">Valve Pattern</th> </tr> </thead> <tbody> <tr> <td><b>D03</b></td> <td>ISO 4401-03-02 NFPA T3.5.1-D03 See section 9</td> </tr> </tbody> </table>	Valve Pattern		<b>D03</b>	ISO 4401-03-02 NFPA T3.5.1-D03 See section 9	<table border="1"> <thead> <tr> <th colspan="2">Circuit</th> </tr> </thead> <tbody> <tr> <td><b>P</b></td> <td>Parallel Circuit Standard Flow</td> </tr> </tbody> </table>	Circuit		<b>P</b>	Parallel Circuit Standard Flow	<table border="1"> <thead> <tr> <th colspan="2">No. of Stations</th> </tr> </thead> <tbody> <tr> <td colspan="2">Aluminum</td> </tr> <tr> <td><b>01...16</b></td> <td>Available with spacing code 2</td> </tr> <tr> <td><b>02...08</b></td> <td>Available with spacing code 4</td> </tr> <tr> <td colspan="2">Ductile Iron</td> </tr> <tr> <td><b>01...16</b></td> <td>Available with spacing code 2</td> </tr> <tr> <td><b>02...08</b></td> <td>Available with spacing code 4</td> </tr> </tbody> </table>	No. of Stations		Aluminum		<b>01...16</b>	Available with spacing code 2	<b>02...08</b>	Available with spacing code 4	Ductile Iron		<b>01...16</b>	Available with spacing code 2	<b>02...08</b>	Available with spacing code 4	<table border="1"> <thead> <tr> <th colspan="2">Valve Spacing</th> </tr> </thead> <tbody> <tr> <td><b>2</b></td> <td>2.13 inch 54.0 mm</td> </tr> <tr> <td><b>4</b></td> <td>4.00 inch 101.6 mm</td> </tr> </tbody> </table>	Valve Spacing		<b>2</b>	2.13 inch 54.0 mm	<b>4</b>	4.00 inch 101.6 mm	<table border="1"> <thead> <tr> <th colspan="4">Port Threads</th> </tr> </thead> <tbody> <tr> <td><b>P</b></td> <td>NPTF • ANSI B1.20.3</td> <td>0.50</td> <td>0.38</td> </tr> <tr> <td><b>S</b></td> <td>SAE • ISO 11926</td> <td>-10</td> <td>-8</td> </tr> <tr> <td><b>B</b></td> <td>BSPP • ISO 1179</td> <td>0.50</td> <td>0.38</td> </tr> <tr> <td><b>M</b></td> <td>ISO • ISO 6149</td> <td>M22</td> <td>M18</td> </tr> <tr> <td><b>T</b></td> <td>BSPT • ISO 7</td> <td>0.50</td> <td>0.38</td> </tr> </tbody> </table>	Port Threads				<b>P</b>	NPTF • ANSI B1.20.3	0.50	0.38	<b>S</b>	SAE • ISO 11926	-10	-8	<b>B</b>	BSPP • ISO 1179	0.50	0.38	<b>M</b>	ISO • ISO 6149	M22	M18	<b>T</b>	BSPT • ISO 7	0.50	0.38	<table border="1"> <thead> <tr> <th colspan="2">Options</th> </tr> </thead> <tbody> <tr> <td colspan="2">See next page for available options and ordering codes.</td> </tr> </tbody> </table>	Options		See next page for available options and ordering codes.	
Material																																																																				
<b>A</b>	Aluminum - 6061-T6 3000 psi • 20.7 MPa																																																																			
<b>D</b>	Ductile Iron - D4512 5000 psi • 34.5 MPa																																																																			
Valve Pattern																																																																				
<b>D03</b>	ISO 4401-03-02 NFPA T3.5.1-D03 See section 9																																																																			
Circuit																																																																				
<b>P</b>	Parallel Circuit Standard Flow																																																																			
No. of Stations																																																																				
Aluminum																																																																				
<b>01...16</b>	Available with spacing code 2																																																																			
<b>02...08</b>	Available with spacing code 4																																																																			
Ductile Iron																																																																				
<b>01...16</b>	Available with spacing code 2																																																																			
<b>02...08</b>	Available with spacing code 4																																																																			
Valve Spacing																																																																				
<b>2</b>	2.13 inch 54.0 mm																																																																			
<b>4</b>	4.00 inch 101.6 mm																																																																			
Port Threads																																																																				
<b>P</b>	NPTF • ANSI B1.20.3	0.50	0.38																																																																	
<b>S</b>	SAE • ISO 11926	-10	-8																																																																	
<b>B</b>	BSPP • ISO 1179	0.50	0.38																																																																	
<b>M</b>	ISO • ISO 6149	M22	M18																																																																	
<b>T</b>	BSPT • ISO 7	0.50	0.38																																																																	
Options																																																																				
See next page for available options and ordering codes.																																																																				



## Options - D03 Standard Flow Parallel Manifold

Contact Daman or consult CD-rom CADalog for cavity locations if critical.

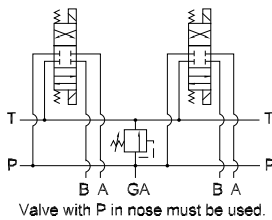


### ISOLATIONS

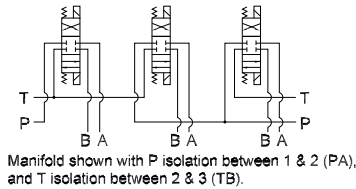
Daman isolation options allow a manifold to have two independent pressure and/or tank ports. Isolations are drilled rather than plugged to ensure a leakproof and failproof isolation.

Ordering code letter:	* Isolation is between stations:	Available # of stations:
2.125 [54.0] spacing		
A	01 & 02	02-10
B	02 & 03	03-11
C	03 & 04	04-12
D	04 & 05	05-13
E	05 & 06	06-14
F	06 & 07	07-15
G	07 & 08	08-16
H	08 & 09	09-16
J	09 & 10	10-16
4.00 [101.6] spacing		
A	01 & 02	02-06
B	02 & 03	03-07
C	03 & 04	04-08
D	04 & 05	05-08
E	05 & 06	06-08
F	06 & 07	07-08

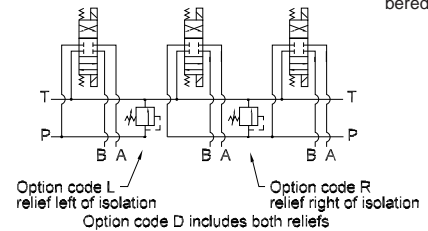
Parallel Circuit with Relief



Parallel Circuit with Isolations



Relief / Isolation Combination



## Ordering Information

