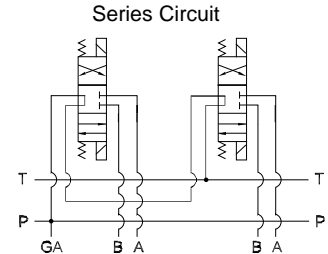
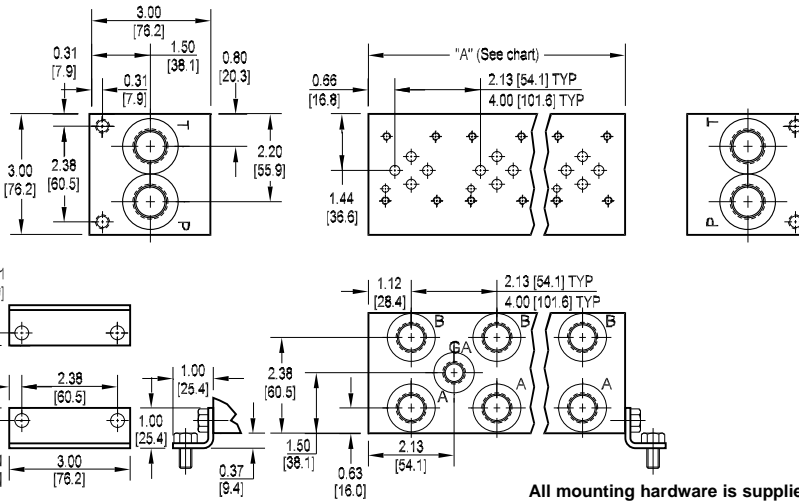




D03 Series Circuit Manifold



All mounting hardware is supplied.
See page 35 for itemized list.

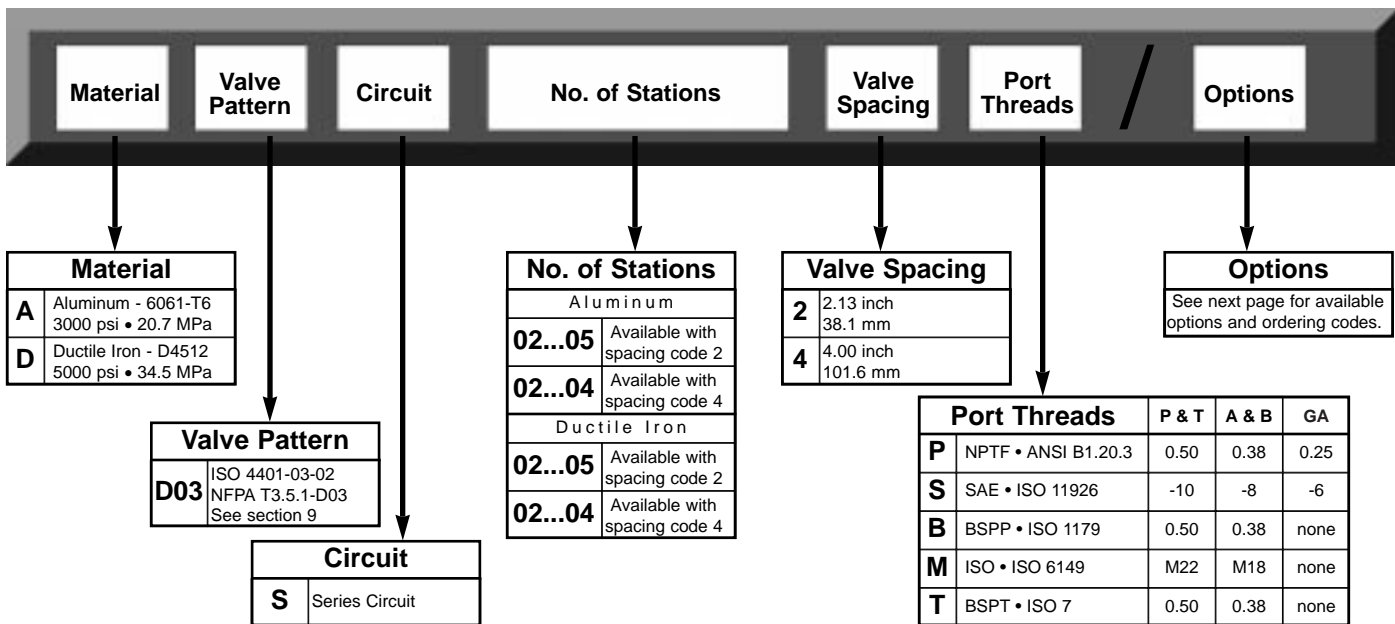
No. of stations	02	03	04	05
"A" length (code 2 spa.) inch [mm]	4.25 [108.0]	6.38 [162.1]	8.50 [215.9]	10.63 [270.0]
apx. weight alum lb [kg]	4 [2]	6 [3]	8 [4]	9 [4]
apx. weight iron lb [kg]	9 [4]	13 [6]	17 [8]	23 [10]
"A" length (code 4 spa.) inch [mm]	6.13 [155.7]	10.13 [257.3]	14.13 [358.9]	
apx. weight alum lb [kg]	6 [3]	9 [4]	12 [5]	
apx. weight iron lb [kg]	12 [5]	20 [9]	28 [13]	

Port code	Valve mtg.	Manifold mtg.
P, S	#10-24 UNC x 0.63 [16] DP	0.31-18 UNC x 0.44 [11.1] DP
B, M, T	M5 ISO 6H x 0.63 [16] DP	M8 ISO 6H x 0.44 [11.1] DP

Note: Both Daman's parallel and series D03 manifolds have pressure and tank lines that run the length of the manifold. Consequently it is commonly assumed that an error was made by marking a parallel manifold incorrectly as a series. Upon closer inspection it can be seen that the valve patterns are indeed connected in series.

Specifications, descriptions, and dimensional data are subject to correction or change without notice or incurring obligation.

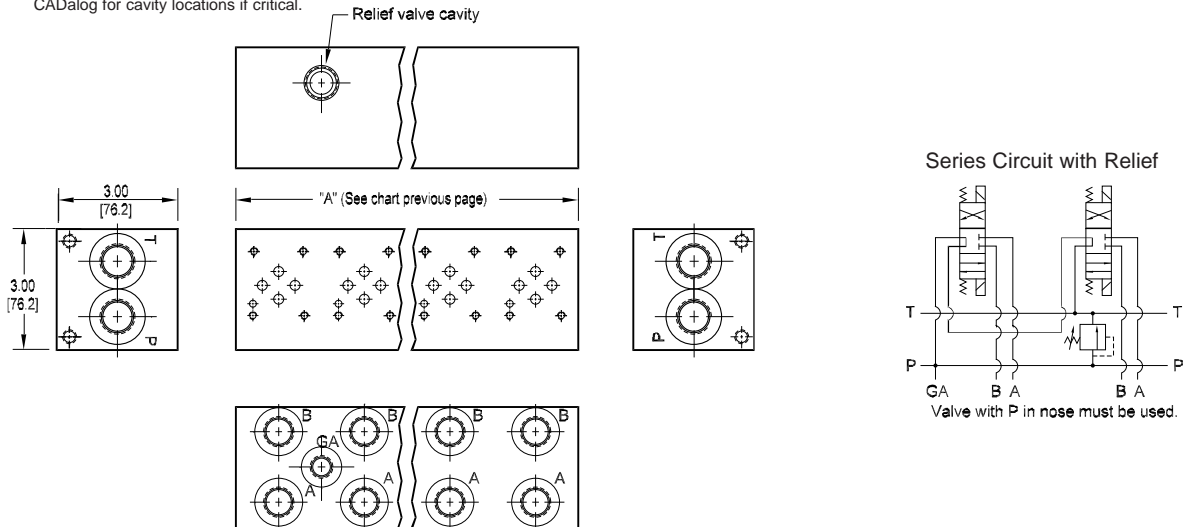
Ordering Information





Options - D03 Series Manifold

Contact Daman or consult CD-rom
CADalog for cavity locations if critical.



1

Ordering Information



Relief Cavity	
Omit if relief not required	
C	Common cavity C-10-2 (P in nose)
S	Sun Cavity T-10A (P in nose) See section 9 for valves.