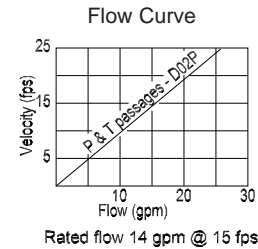
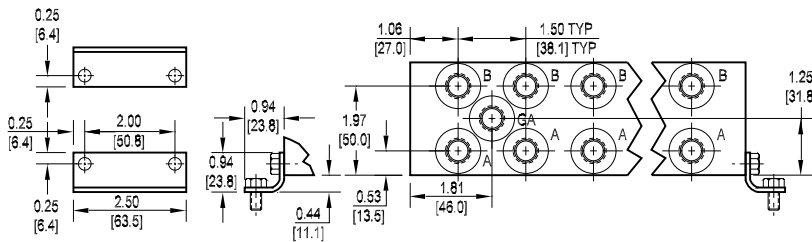
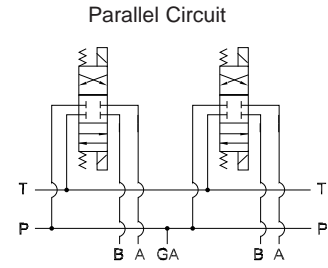
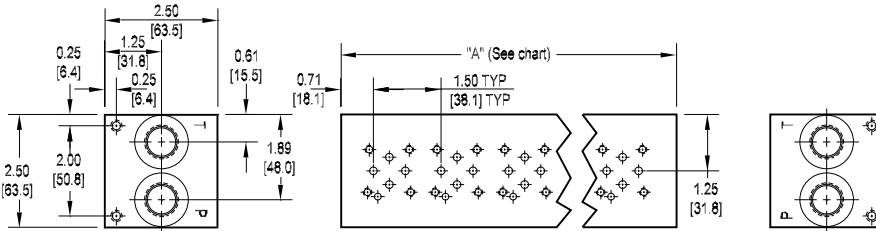




## D02 Parallel Circuit Manifold

1



All mounting hardware is supplied.  
See page 35 for itemized list.

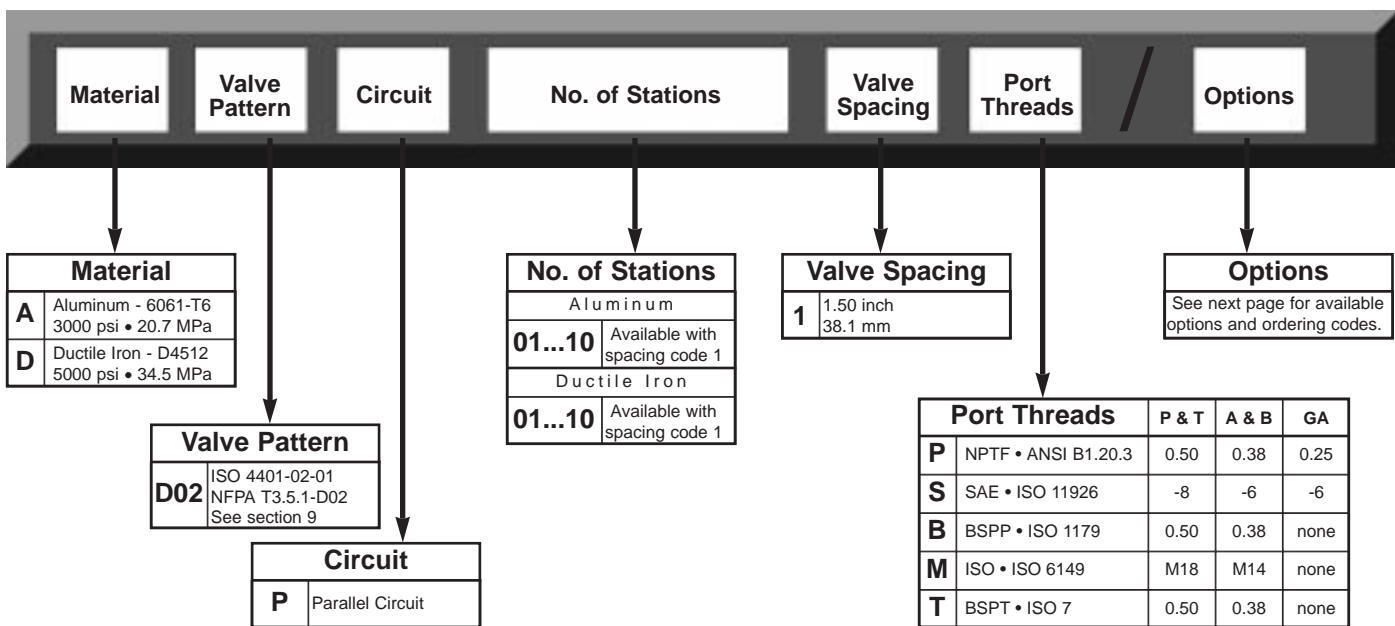
No. of stations	* 01	02	03	04	05	06	07	08	09	10
"A" length inch [mm]	2.13 [54.0]	3.63 [92.1]	5.13 [130.2]	6.63 [168.3]	8.13 [206.4]	9.63 [244.5]	11.13 [282.6]	12.63 [320.7]	14.13 [358.8]	15.63 [396.9]
apx. weight alum lb [kg]	3 [1.5]	5 [2.5]	7 [3]	8 [4]	10 [4.5]	12 [5.5]	14 [6]	16 [7]	17 [8]	19 [9]
apx. weight iron lb [kg]	5 [2.5]	8.5 [4]	12 [5.5]	16 [7]	19 [9]	23 [10]	26 [12]	30 [14]	33 [15]	37 [17]

Port code	Valve mtg.	Manifold mtg.
P, S	#10-24 UNC x 0.56 [14] DP	0.25-20 UNC x 0.38 [9.7] DP
B, M, T	M5 ISO 6H x 0.56 [14] DP	M6 ISO 6H x 0.38 [9.7] DP

\* Length of 01 station with relief cavity is 3.13 [79.4]. Gauge port not available on 01 station.

Specifications, descriptions, and dimensional data are subject to correction or change without notice or incurring obligation.

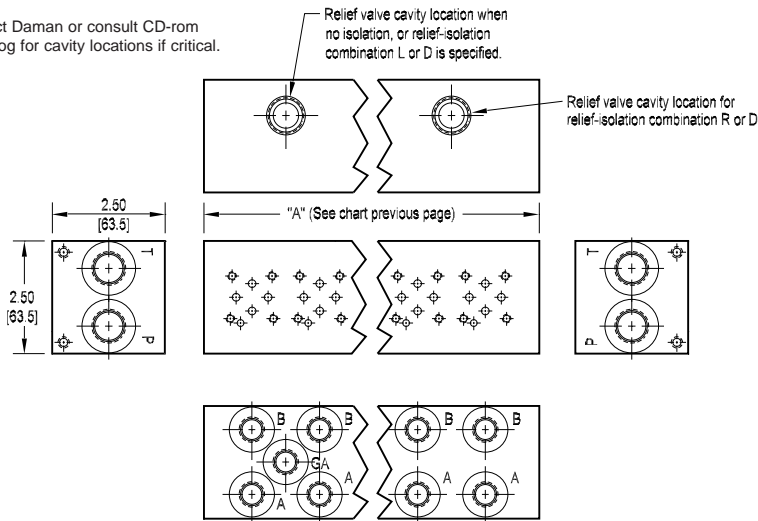
## Ordering Information





## Options - D02 Parallel Manifold

Contact Daman or consult CD-rom CADalog for cavity locations if critical.



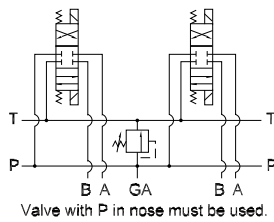
### ISOLATIONS

Daman isolation options allow a manifold to have two independent pressure and/or tank ports. Isolations are drilled rather than plugged to ensure a leakproof and failproof isolation.

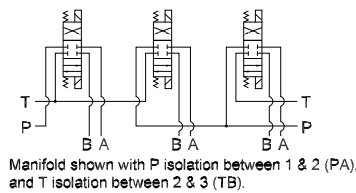
Ordering code letter:	* Isolation is between stations:	Available # of stations:
A	01 & 02	02-10
B	02 & 03	03-10
C	03 & 04	04-10
D	04 & 05	05-10
E	05 & 06	06-10
F	06 & 07	07-10
G	07 & 08	08-10
H	08 & 09	09-10
J	09 & 10	10

\* Stations are numbered left to right.

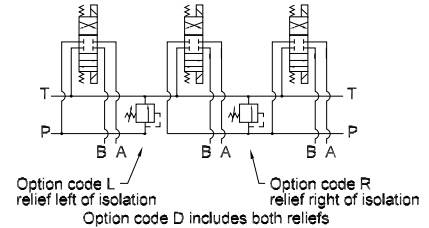
Parallel Circuit with Relief



Parallel Circuit with Isolations



Relief / Isolation Combination



## Ordering Information

