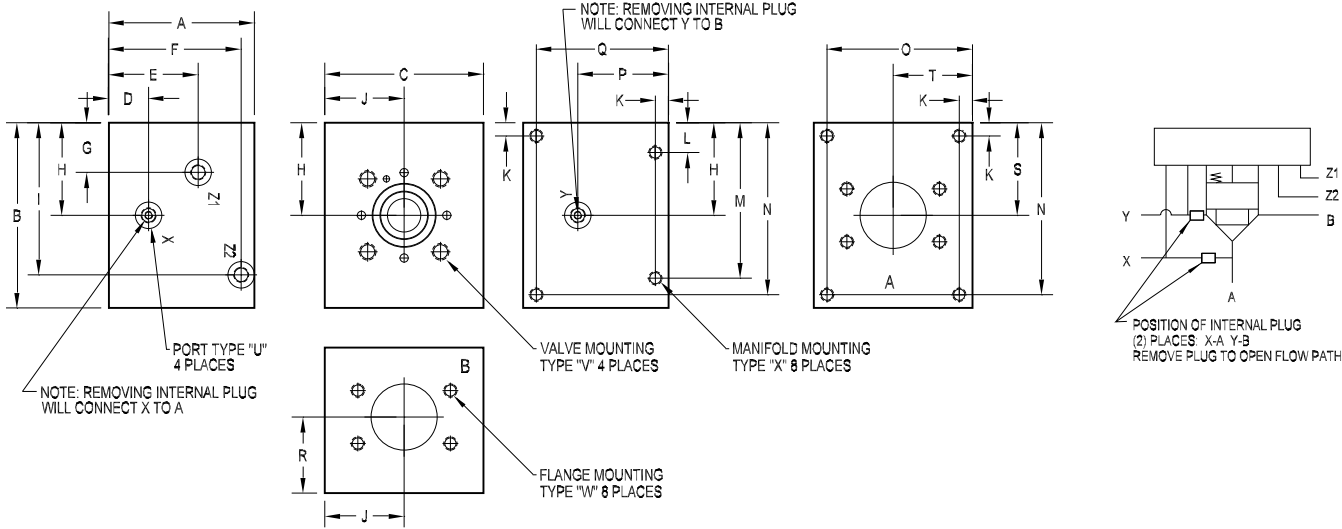




63mm Body • XA Circuit



Specifications, descriptions, and dimensional data are subject to correction or change without notice or incurring obligation.

PART NO.	A	B	C	D	E	F	G	H	I	J	K	L	M	N	O	P
*63XA48F61	8.00	9.00	8.00	1.00	4.24	7.25	1.29	4.25	8.00	4.00	0.63	1.38	7.63	8.38	7.38	4.24
*63XA48F61M	[203.2]	[228.6]	[203.2]	[25.4]	[107.7]	[184.2]	[32.8]	[108.0]	[203.2]	[101.6]	[15.9]	[34.9]	[193.7]	[212.7]	[187.3]	[107.7]
*63XB48F61	8.00	9.00	8.00	4.24	--	7.25	1.25	4.25	8.00	4.00	0.63	1.38	7.63	8.38	7.38	4.24
*63XB48F61M	[203.2]	[228.6]	[203.2]	[107.7]	--	[184.2]	[31.8]	[108.0]	[203.2]	[101.6]	[15.9]	[34.9]	[193.7]	[212.7]	[187.3]	[107.7]
D63XA48F62	9.00	10.50	9.00	2.25	5.00	8.25	1.77	4.75	8.50	4.50	0.63	1.38	9.13	9.88	8.38	5.24
D63XA48F62M	[228.6]	[266.7]	[228.6]	[57.2]	[127.0]	[209.6]	[45.0]	[120.7]	[215.9]	[114.3]	[15.9]	[34.9]	[231.8]	[250.8]	[212.7]	[133.1]
D63XB48F62	9.00	10.50	9.00	5.24	--	8.25	2.25	4.75	8.50	4.50	0.63	1.38	9.13	9.88	8.38	5.24
D63XB48F62M	[228.6]	[266.7]	[228.6]	[133.1]	--	[209.6]	[57.2]	[120.7]	[215.9]	[114.3]	[15.9]	[34.9]	[231.8]	[250.8]	[212.7]	[133.1]
*63XA80F61	8.00	9.00	8.00	1.38	4.24	7.25	1.29	4.25	8.00	4.00	0.63	1.50	7.50	8.38	7.38	4.24
*63XA80F61M	[203.2]	[228.6]	[203.2]	[34.9]	[107.7]	[184.2]	[32.8]	[108.0]	[203.2]	[101.6]	[15.9]	[38.1]	[190.5]	[212.7]	[187.3]	[107.7]
*63XB80F61	8.00	9.00	8.00	4.24	--	7.25	1.38	4.25	8.00	4.00	0.63	1.50	7.50	8.38	7.38	4.24
*63XB80F61M	[203.2]	[228.6]	[203.2]	[107.7]	--	[184.2]	[34.9]	[108.0]	[203.2]	[101.6]	[15.9]	[38.1]	[190.5]	[212.7]	[187.3]	[107.7]

PART NO.	Q	R	S	T	U pilot port size	V valve mounting	W flange mounting	X manifold mounting
*63XA48F61	7.38	4.24	4.25	4.00	SAE #08	1.25 UNC x 2.75 DP	0.63 UNC x 1.31 DP	0.63 UNC x 1.25 DP
*63XA48F61M	[187.3]	[107.7]	[108.0]	[101.6]	ISO 6149 M18	M30 ISO 6H x 70 DP	M16 ISO 6H x 33 DP	M16 ISO 6H x 32 DP
*63XB48F61	7.38	4.24	4.25	4.00	SAE #08	1.25 UNC x 2.75 DP	0.63 UNC x 1.31 DP	0.63 UNC x 1.25 DP
*63XB48F61M	[187.3]	[107.7]	[108.0]	[101.6]	ISO 6149 M18	M30 ISO 6H x 70 DP	M16 ISO 6H x 33 DP	M16 ISO 6H x 32 DP
D63XA48F62	8.38	5.24	4.75	4.50	SAE #08	1.25 UNC x 2.75 DP	1.13 UNC x 2.25 DP	0.63 UNC x 1.25 DP
D63XA48F62M	[212.7]	[133.1]	[120.7]	[114.3]	ISO 6149 M18	M30 ISO 6H x 70 DP	M27 ISO 6H x 57 DP	M16 ISO 6H x 32 DP
D63XB48F62	8.38	5.24	4.75	4.50	SAE #08	1.25 UNC x 2.75 DP	1.13 UNC x 2.25 DP	0.63 UNC x 1.25 DP
D63XB48F62M	[212.7]	[133.1]	[120.7]	[114.3]	ISO 6149 M18	M30 ISO 6H x 70 DP	M27 ISO 6H x 57 DP	M16 ISO 6H x 32 DP
*63XA80F61	7.38	4.24	4.25	4.00	SAE #08	1.25 UNC x 2.75 DP	0.63 UNC x 1.44 DP	0.63 UNC x 1.44 DP
*63XA80F61M	[187.3]	[107.7]	[108.0]	[101.6]	ISO 6149 M18	M30 ISO 6H x 70 DP	M16 ISO 6H x 36 DP	M16 ISO 6H x 36 DP
*63XB80F61	7.38	4.24	4.25	4.00	SAE #08	1.25 UNC x 2.75 DP	0.63 UNC x 1.44 DP	0.63 UNC x 1.44 DP
*63XB80F61M	[187.3]	[107.7]	[108.0]	[101.6]	ISO 6149 M18	M30 ISO 6H x 70 DP	M16 ISO 6H x 36 DP	M16 ISO 6H x 36 DP