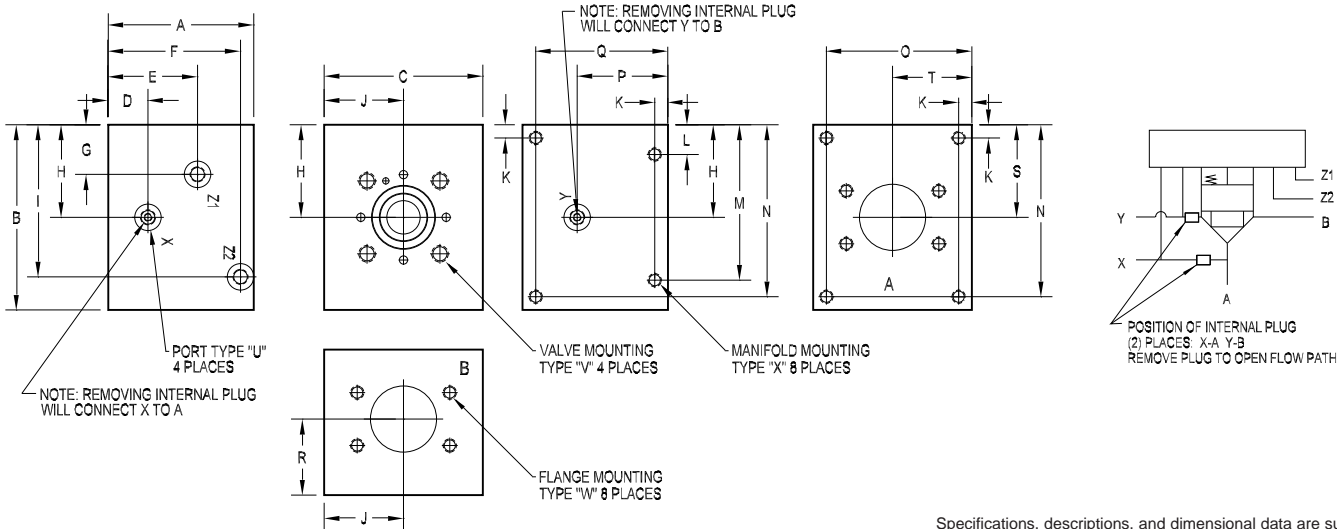




50mm Body • XA Circuit



Specifications, descriptions, and dimensional data are subject to correction or change without notice or incurring obligation.

PART NO.	A	B	C	D	E	F	G	H	I	J	K	L	M	N	O	P
50XA40F61	7.00	7.00	6.00	1.50	4.50	6.50	0.75	3.25	6.13	3.00	0.50	1.13	5.88	6.50	5.50	4.15
*50XA40F61M	[177.8]	[177.8]	[152.4]	[38.1]	[114.3]	[165.1]	[19.1]	[82.6]	[155.6]	[76.2]	[12.7]	[28.6]	[149.2]	[165.1]	[139.7]	[105.3]
50XB40F61	7.00	7.00	6.00	4.15	--	6.50	1.50	3.25	6.13	3.00	0.50	1.13	5.88	6.50	5.50	4.15
*50XB40F61M	[177.8]	[177.8]	[152.4]	[105.3]	--	[165.1]	[38.1]	[82.6]	[155.6]	[76.2]	[12.7]	[28.6]	[149.2]	[165.1]	[139.7]	[105.3]
D50XA40F62*	7.00	8.00	7.00	1.50	4.50	6.50	1.25	3.75	6.62	3.50	0.50	1.13	6.88	7.50	6.50	4.15
D50XA40F62M	[177.8]	[203.2]	[177.8]	[38.1]	[114.3]	[165.1]	[31.8]	[95.3]	[168.3]	[88.9]	[12.7]	[28.6]	[174.6]	[190.5]	[165.1]	[105.3]
D50XB40F62*	7.00	8.00	7.00	4.15	--	6.50	1.50	3.75	6.62	3.50	0.50	1.13	6.88	7.50	6.50	4.15
D50XB40F62M	[177.8]	[203.2]	[177.8]	[105.3]	--	[165.1]	[38.1]	[95.3]	[168.3]	[88.9]	[12.7]	[28.6]	[174.6]	[190.5]	[165.1]	[105.3]
50XA64F61	7.00	7.25	6.50	1.50	4.15	6.50	1.19	3.50	6.38	3.25	0.50	1.13	6.13	6.75	6.00	4.15
*50XA64F61M	[177.8]	[184.2]	[165.1]	[38.1]	[105.4]	[165.1]	[30.2]	[88.9]	[161.9]	[82.6]	[12.7]	[28.6]	[155.6]	[171.5]	[152.4]	[105.3]
50XB64F61	7.00	7.25	6.50	4.15	--	6.50	1.50	3.50	6.38	3.25	0.50	1.13	6.13	6.75	6.00	4.15
*50XB64F61M	[177.8]	[184.2]	[165.1]	[105.3]	--	[165.1]	[38.1]	[88.9]	[161.9]	[82.6]	[12.7]	[28.6]	[155.6]	[171.5]	[152.4]	[105.3]

PART NO.	Q	R	S	T	U pilot port size	V valve mounting	W flange mounting	X manifold mounting
*50XA40F61V	6.50	4.15	3.25	3.00	SAE #6	0.75 UNC x 1.62 DP	0.50 UNC x 1.19 DP	0.50 UNC x 1.00 DP
*50XA40F61R	[165.1]	[105.3]	[82.6]	[76.2]	ISO 6149 M14	0.88 UNC x 1.62 DP	M12 ISO 6H x 30 DP	M12 ISO 6H x 25 DP
*50XA40F61M						M20 ISO 6H x 41 DP		
*50XB40F61V	6.50	4.15	3.25	3.00	SAE #6	0.75 UNC x 1.62 DP	0.50 UNC x 1.19 DP	0.50 UNC x 1.00 DP
*50XB40F61R	[165.1]	[105.3]	[82.6]	[76.2]	ISO 6149 M14	0.88 UNC x 1.62 DP	M12 ISO 6H x 30 DP	M12 ISO 6H x 25 DP
*50XB40F61M						M20 ISO 6H x 41 DP		
D50XA40F62V	6.50	4.00	3.75	3.50	SAE #6	0.75 UNC x 1.62 DP	0.88 UNC x 1.75 DP	0.50 UNC x 1.00 DP
D50XA40F62R	[165.1]	[101.6]	[95.3]	[88.9]	ISO 6149 M14	0.88 UNC x 1.62 DP	M22 ISO 6H x 45 DP	M12 ISO 6H x 25 DP
D50XA40F62M						M20 ISO 6H x 41 DP		
D50XB40F62V	6.50	4.00	3.75	3.50	SAE #6	0.75 UNC x 1.62 DP	0.88 UNC x 1.75 DP	0.50 UNC x 1.00 DP
D50XB40F62R	[165.1]	[101.6]	[95.3]	[88.9]	ISO 6149 M14	0.88 UNC x 1.62 DP	M22 ISO 6H x 45 DP	M12 ISO 6H x 25 DP
D50XB40F62M						M20 ISO 6H x 41 DP		
*50XA64F61V	6.50	3.88	3.50	3.25	SAE #6	0.75 UNC x 1.62 DP	0.63 UNC x 1.44 DP	0.50 UNC x 1.19 DP
*50XA64F61R	[165.1]	[98.4]	[88.9]	[82.6]	ISO 6149 M14	0.88 UNC x 1.62 DP	M16 ISO 6H x 36 DP	M12 ISO 6H x 30 DP
*50XA64F61M						M20 ISO 6H x 41 DP		
*50XB64F61V	6.50	3.88	3.50	3.25	SAE #6	0.75 UNC x 1.62 DP	0.63 UNC x 1.44 DP	0.50 UNC x 1.19 DP
*50XB64F61R	[165.1]	[98.4]	[88.9]	[82.6]	ISO 6149 M14	0.88 UNC x 1.62 DP	M16 ISO 6H x 36 DP	M12 ISO 6H x 30 DP
*50XB64F61M						M20 ISO 6H x 41 DP		