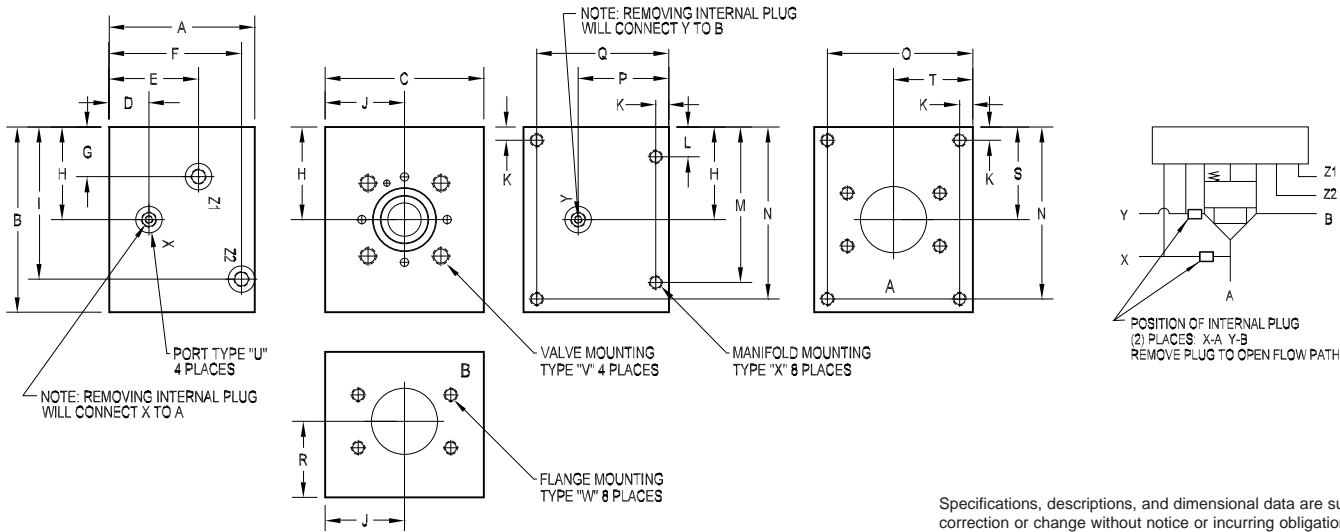




## 40mm Body • XA Circuit



Specifications, descriptions, and dimensional data are subject to correction or change without notice or incurring obligation.

PART NO.	A	B	C	D	E	F	G	H	I	J	K	L	M	N	O	P
*40XA32F61	6.00	7.00	6.00	1.25	3.50	5.50	1.28	3.25	6.00	3.00	0.50	1.13	5.88	6.50	5.50	3.46
*40XA32F61M	[152.4]	[177.8]	[152.4]	[31.8]	[88.9]	[139.7]	[32.5]	[82.6]	[152.4]	[76.2]	[12.7]	[28.6]	[149.2]	[165.1]	[139.7]	[87.9]
*40XB32F61	6.00	7.00	6.00	3.46	--	5.50	1.25	3.25	6.00	3.00	0.50	1.13	5.88	6.50	5.50	3.46
*40XB32F61M	[152.4]	[177.8]	[152.4]	[87.9]	--	[139.7]	[31.8]	[82.6]	[152.4]	[76.2]	[12.7]	[28.6]	[149.2]	[165.1]	[139.7]	[87.9]
D40XA32F62	6.00	7.00	6.00	1.25	3.50	5.50	1.16	3.13	5.88	3.00	0.50	1.13	5.88	6.50	5.50	3.46
D40XA32F62M	[152.4]	[177.8]	[152.4]	[31.8]	[88.9]	[139.7]	[29.4]	[79.8]	[149.2]	[76.2]	[12.7]	[28.6]	[149.2]	[165.1]	[139.7]	[87.9]
D40XB32F62	6.00	7.00	6.00	3.46	--	5.50	1.25	3.13	5.88	3.00	0.50	1.13	5.88	6.50	5.50	3.46
D40XB32F62M	[152.4]	[177.8]	[152.4]	[87.9]	--	[139.7]	[31.8]	[79.8]	[149.2]	[76.2]	[12.7]	[28.6]	[149.2]	[165.1]	[139.7]	[87.9]
*40XA48F61	6.00	7.50	6.00	1.25	3.50	5.50	1.78	3.75	6.50	3.00	0.50	1.13	6.38	7.00	5.50	3.46
*40XA48F61M	[152.4]	[190.5]	[152.4]	[31.8]	[88.9]	[139.7]	[45.2]	[95.3]	[165.1]	[76.2]	[12.7]	[28.6]	[161.9]	[177.8]	[139.7]	[87.9]
*40XB48F61	6.00	7.50	6.00	3.46	--	5.50	1.25	3.75	6.50	3.00	0.50	1.13	6.38	7.00	5.50	3.46
*40XB48F61M	[152.4]	[190.5]	[152.4]	[87.9]	--	[139.7]	[31.8]	[95.3]	[165.1]	[76.2]	[12.7]	[28.6]	[161.9]	[177.8]	[139.7]	[87.9]
D40XA48F62	7.50	9.50	9.00	2.75	5.00	7.00	2.78	4.75	7.50	4.50	0.75	1.63	7.88	8.75	8.25	4.96
D40XA48F62M	[190.5]	[241.3]	[228.6]	[69.9]	[127.0]	[177.8]	[70.6]	[120.7]	[190.5]	[114.3]	[19.1]	[41.3]	[200.0]	[222.3]	[209.6]	[126.0]
D40XB48F62	7.50	9.50	9.00	4.96	--	7.00	2.75	4.75	7.50	4.50	0.75	1.63	7.88	8.75	8.25	4.96
D40XB48F62M	[190.5]	[241.3]	[228.6]	[126.0]	--	[177.8]	[69.9]	[120.7]	[190.5]	[114.3]	[19.1]	[41.3]	[200.0]	[222.3]	[209.6]	[126.0]

PART NO.	Q	R	S	T	U pilot port size	V valve mounting	W flange mounting	X manifold mounting
*40XA32F61	5.50	3.46	3.25	3.00	SAE #6	0.75 UNC x 1.62 DP	0.50 UNC x 1.19 DP	0.50 UNC x 1.00 DP
*40XA32F61M	[139.7]	[87.9]	[82.6]	[76.2]	ISO 6149 M14	M20 ISO 6H x 41 DP	M12 ISO 6H x 30 DP	M12 ISO 6H x 25 DP
*40XB32F61	5.50	3.46	3.25	3.00	SAE #6	0.75 UNC x 1.62 DP	0.50 UNC x 1.19 DP	0.50 UNC x 1.00 DP
*40XB32F61M	[139.7]	[87.9]	[82.6]	[76.2]	ISO 6149 M14	M20 ISO 6H x 41 DP	M12 ISO 6H x 30 DP	M12 ISO 6H x 25 DP
D40XA32F62	5.50	3.46	3.13	3.00	SAE #6	0.75 UNC x 1.62 DP	0.75 UNC x 1.50 DP	0.50 UNC x 1.00 DP
D40XA32F62M	[139.7]	[87.9]	[79.4]	[76.2]	ISO 6149 M14	M20 ISO 6H x 41 DP	M20 ISO 6H x 38 DP	M12 ISO 6H x 25 DP
D40XB32F62	5.50	3.46	3.13	3.00	SAE #6	0.75 UNC x 1.62 DP	0.75 UNC x 1.50 DP	0.50 UNC x 1.00 DP
D40XB32F62M	[139.7]	[87.9]	[79.4]	[76.2]	ISO 6149 M14	M20 ISO 6H x 41 DP	M20 ISO 6H x 38 DP	M12 ISO 6H x 25 DP
*40XA48F61	5.50	3.00	3.75	3.00	SAE #6	0.75 UNC x 1.62 DP	0.63 UNC x 1.44 DP	0.50 UNC x 1.00 DP
*40XA48F61M	[139.7]	[76.2]	[95.3]	[76.2]	ISO 6149 M14	M20 ISO 6H x 41 DP	M16 ISO 6H x 36 DP	M12 ISO 6H x 25 DP
*40XB48F61	5.50	3.00	3.75	3.00	SAE #6	0.75 UNC x 1.62 DP	0.63 UNC x 1.44 DP	0.50 UNC x 1.00 DP
*40XB48F61M	[139.7]	[76.2]	[95.3]	[76.2]	ISO 6149 M14	M20 ISO 6H x 41 DP	M16 ISO 6H x 36 DP	M12 ISO 6H x 25 DP
D40XA48F62	6.75	3.75	4.75	4.50	SAE #6	0.75 UNC x 1.62 DP	1.13 UNC x 2.50 DP	0.75 UNC x 1.62 DP
D40XA48F62M	[171.5]	[95.3]	[120.7]	[114.3]	ISO 6149 M14	M20 ISO 6H x 41 DP	M27 ISO 6H x 63 DP	M20 ISO 6H x 41 DP
D40XB48F62	6.75	3.75	4.75	4.50	SAE #6	0.75 UNC x 1.62 DP	1.13 UNC x 2.50 DP	0.75 UNC x 1.62 DP
D40XB48F62M	[171.5]	[95.3]	[120.7]	[114.3]	ISO 6149 M14	M20 ISO 6H x 41 DP	M27 ISO 6H x 63 DP	M20 ISO 6H x 41 DP